

# Importing a DWG Footprint & Assigning Intelligence

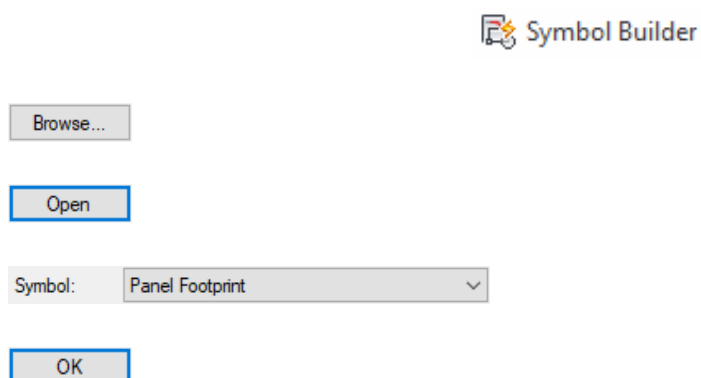
## AutoCAD Electrical

Although AutoCAD Electrical adds intelligent attributes on the fly to dumb footprint symbols, you may wish to define the exact position of where the attributes will be specifically placed.

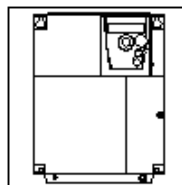
To avoid having to create a 2D drawing yourself, you can download manufacturer's footprints from our website or indeed from most manufacturers' web sites:

<https://www.cadlinecommunity.co.uk/hc/en-us/articles/202783761-Traceparts>

You can search on the part number ATV312HU75N4 to locate the download.



The new footprint will now be opened

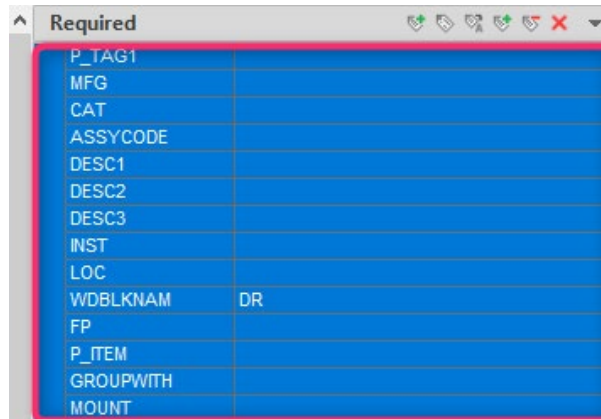


The minimum information that a 2D footprint requires is the component tag, but it is at your discretion whether further information would be useful in being shown in the layout drawings.





Highlight all the attributes in the Symbol Builder Attributes Editor **Required** list.



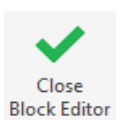
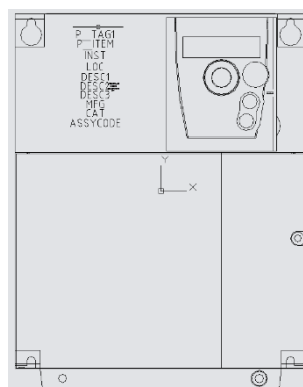
Position where you want the information to be displayed.

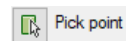
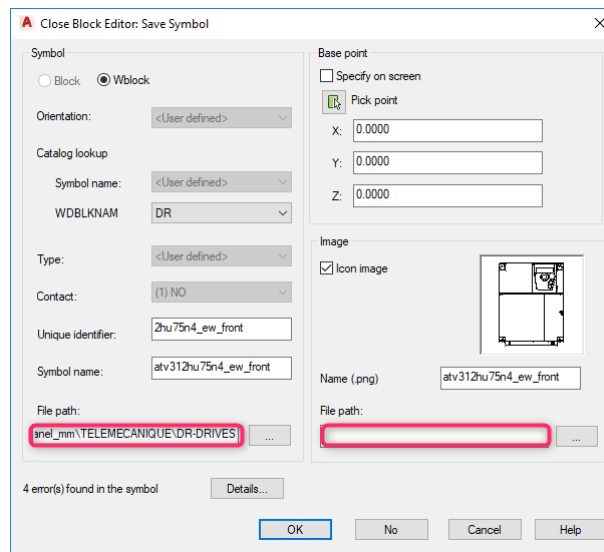
Highlight the attributes in the drawing and right click *Properties*.

Change the text to be *Middle Centre* and the text height to be *5mm* as shown.

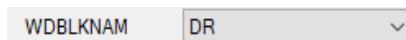
Style	WD_IEC
Justify	Center
Height	5
Rotation	0

Reposition the attributes accordingly so that they don't overlap one another.





The insertion point of the symbol will be the origin point shown by the X-Y axis.



Specify the correct File path for where you wish the drawing to be saved.

Example:

...\Autodesk\Acade 2022\Libs\Panel\_mm\TELEMECANIQUE\DR- Drives\

Or if a shared location as an example:

...\AutoCAD Electrical\Libs\Panel\_mm\TELEMECANIQUE\DR- Drives\

Specify the correct File path for the Icon Image.

e.g. C:\Users\<<your user name>>\AppData\Roaming\Autodesk\AutoCAD Electrical 2022\R24.1\enu\Support\Images

Or if a shared location as an example:

...\AutoCAD Electrical\Support\Images