

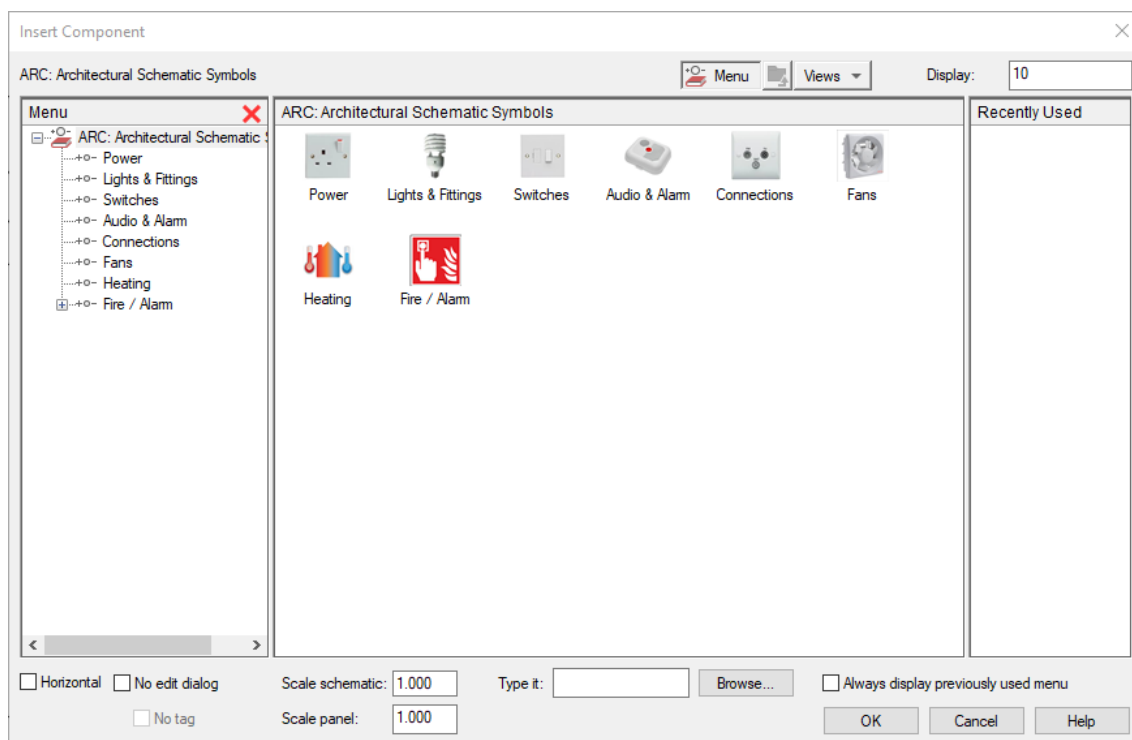
# What is the Architectural Library?

## AutoCAD Electrical

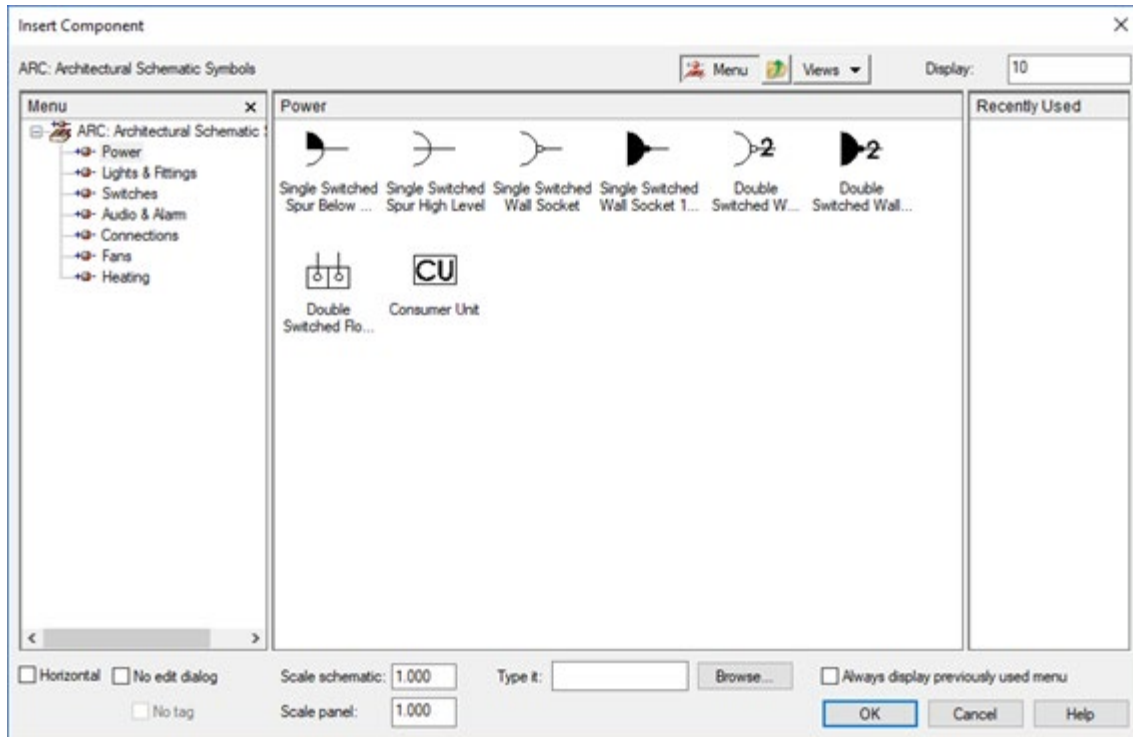
A Cadline specific AutoCAD® Electrical library has been developed for the architectural schematic requirements. This enables the user to take an architectural room layout and place the electrical symbols down. Where it differs from AutoCAD® MEP however, is that the symbols can be wired up meaning the user can lay their cables around the floorplan and connect the equipment. Subsequently through the comprehensive reporting tools, the user can produce from/to lists, bills of materials etc. As AutoCAD® Electrical is project based, the user can breakdown their floors into different drawings and still have cabling connected across multiple drawings with cross reference information. This addition is useful to customers who have purchased the Architecture, Engineering & Construction Collection. This has recently been updated to include **Fire & Alarm** symbols making it easier for these industries to utilise AutoCAD® Electrical and maximise their productivity:

The ARC (architectural) library is available within the Cadline Localiser, but an update is available, on request, through customer services which includes the NEW **Fire & Alarm** symbols. This will also be updated in the next version of the Cadline Localiser.

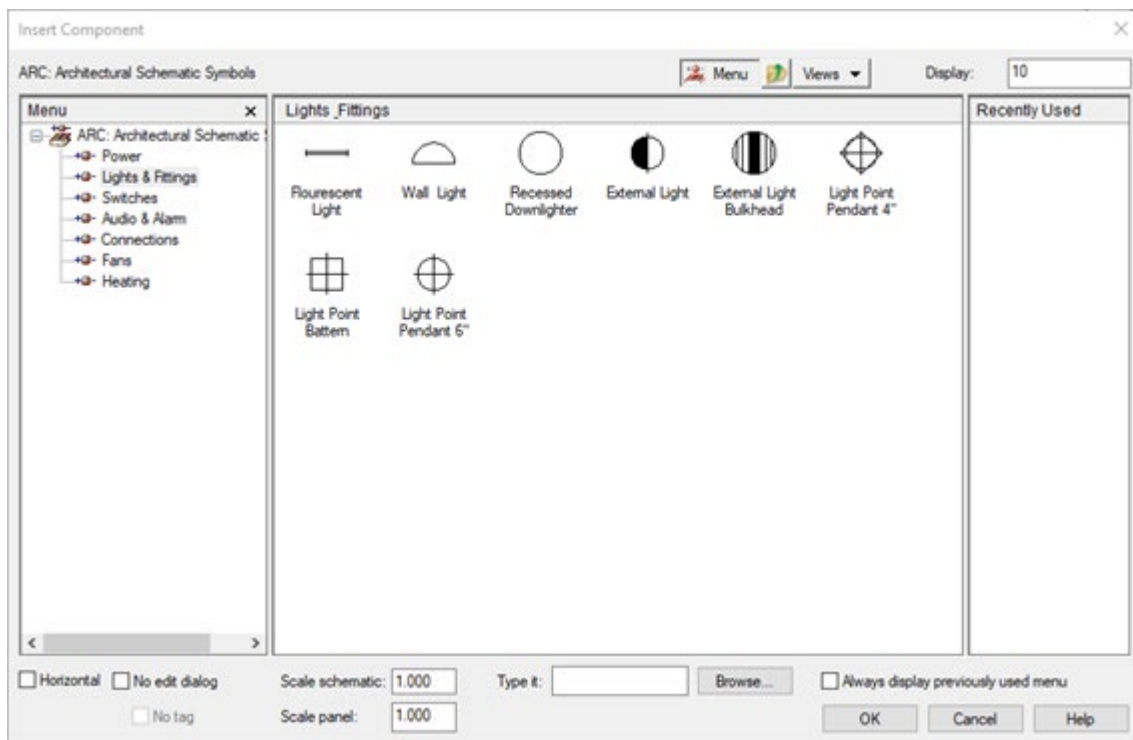
### Architectural Schematic Symbols:



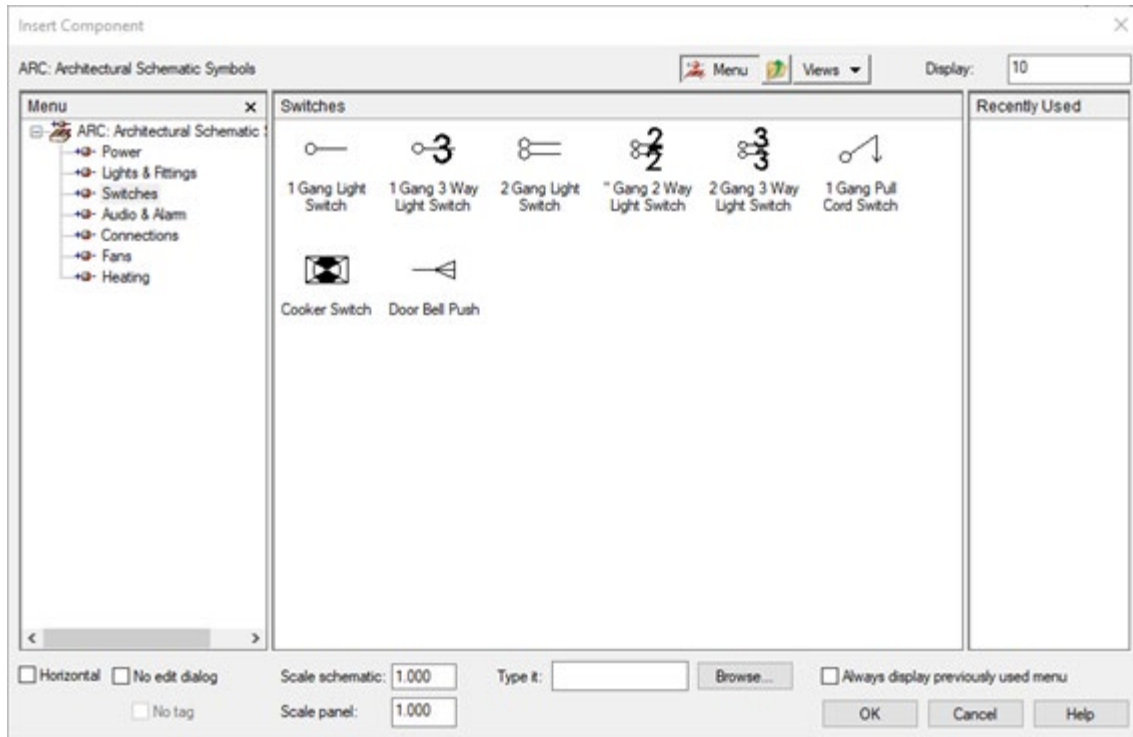
➤ Power:



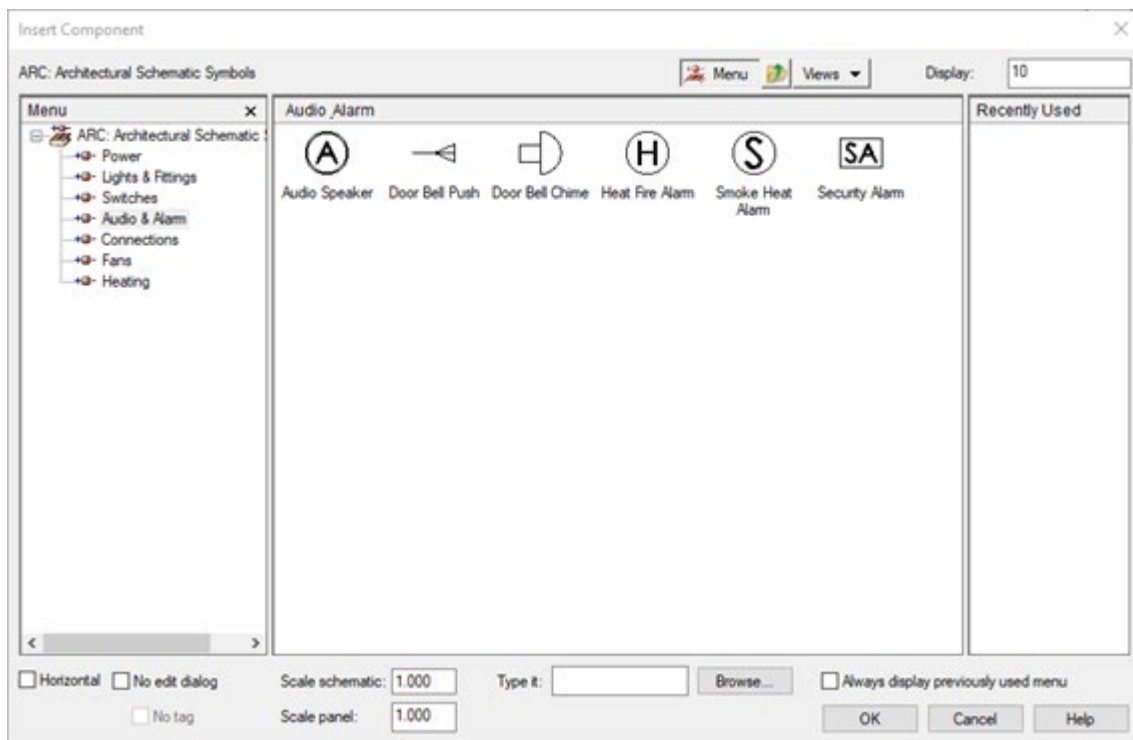
➤ Lights & Fittings:



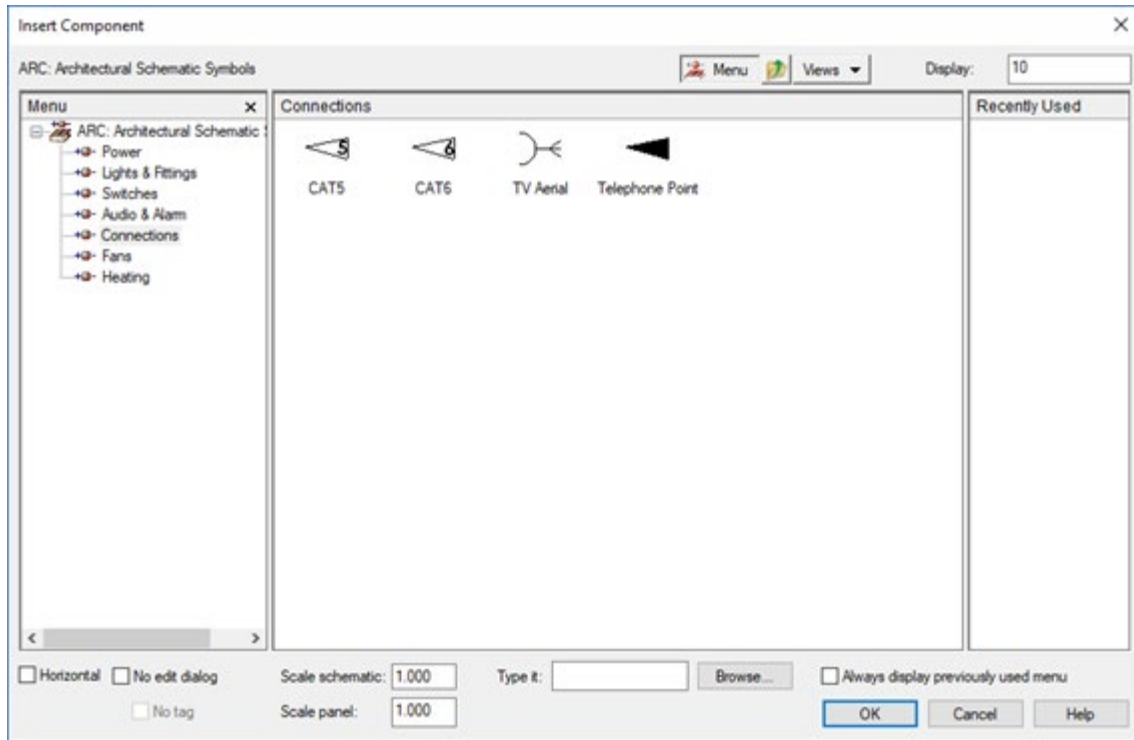
➤ **Switches:**



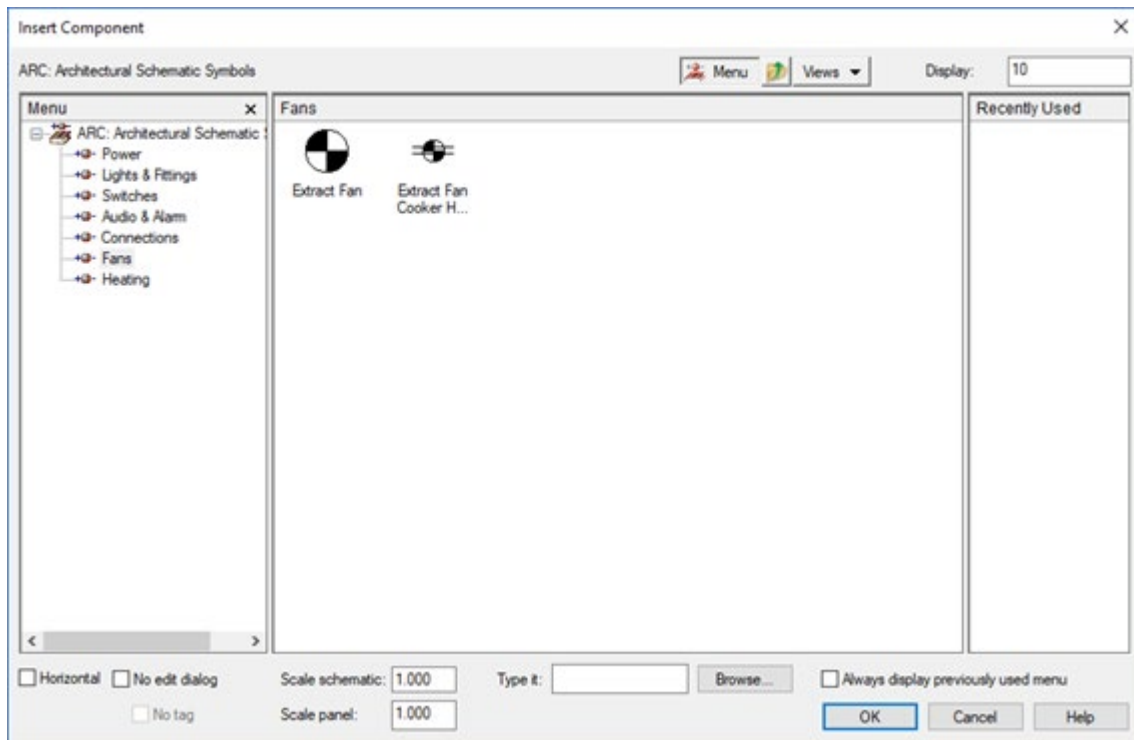
➤ **Audio & Alarm:**



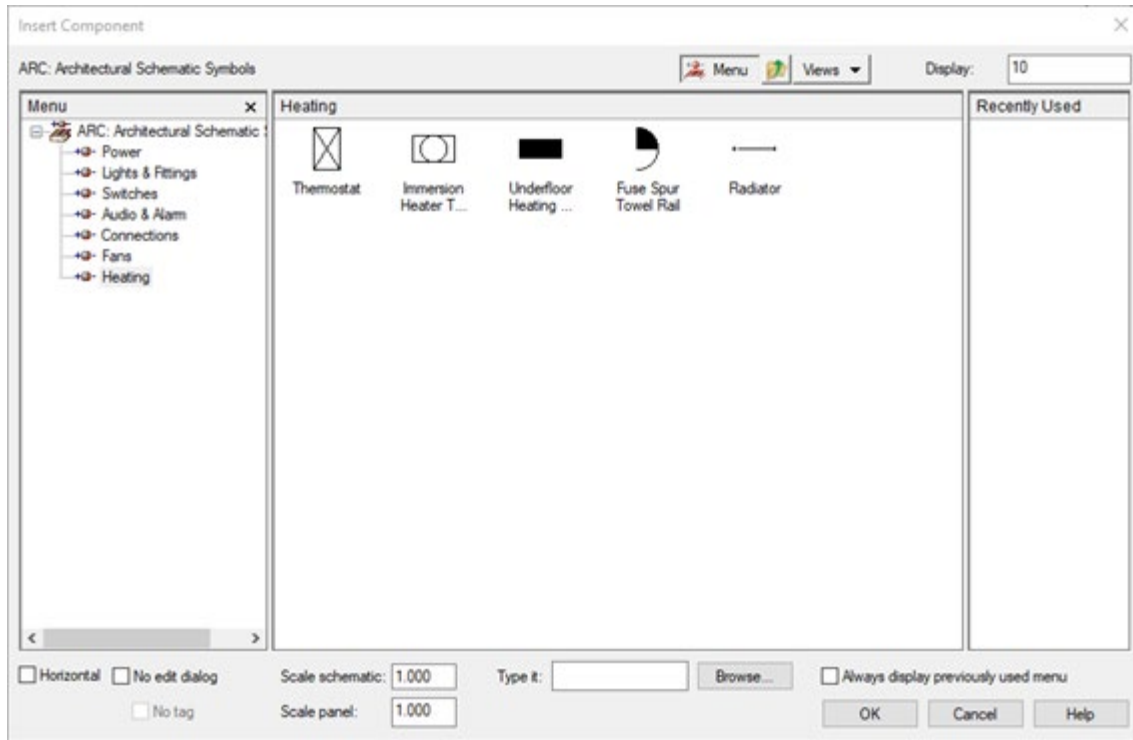
➤ Connections:



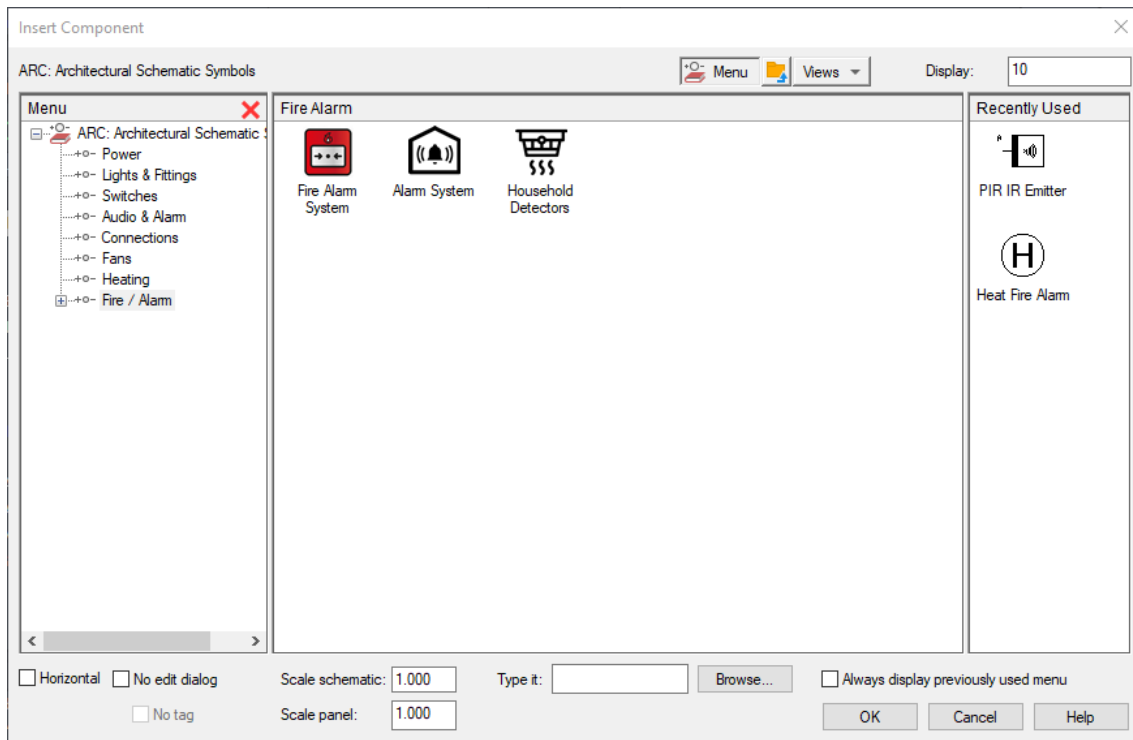
➤ Fans:



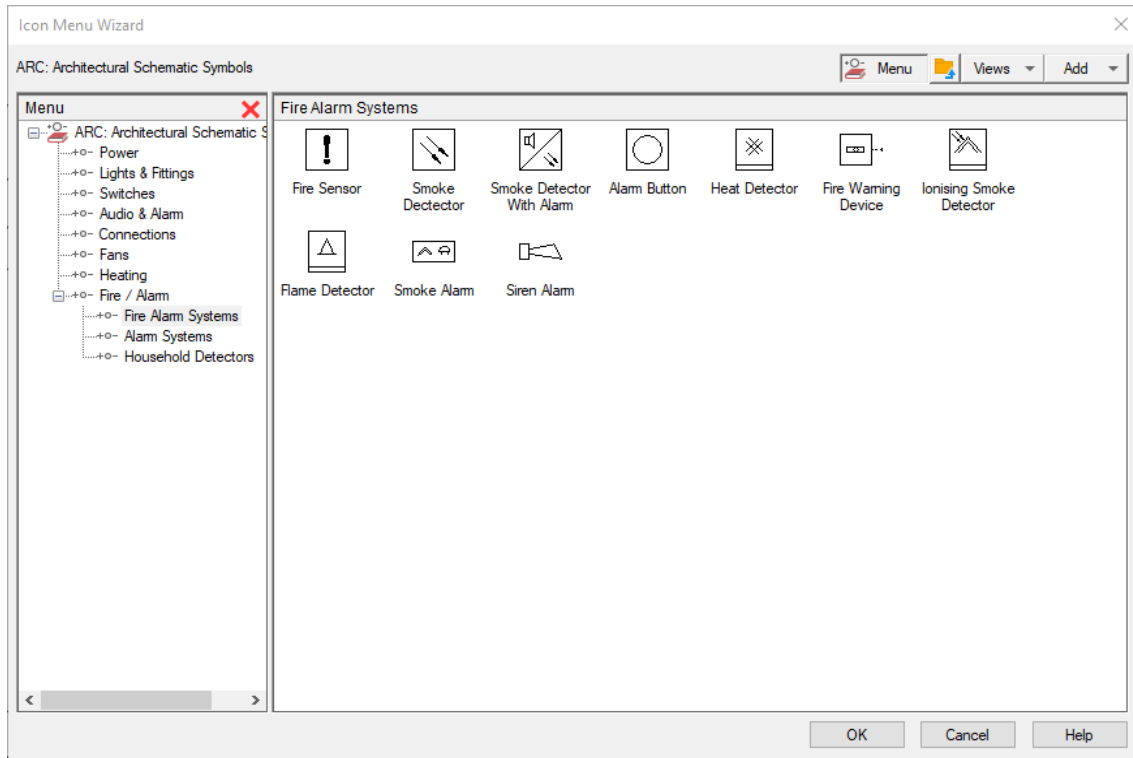
➤ Heating:



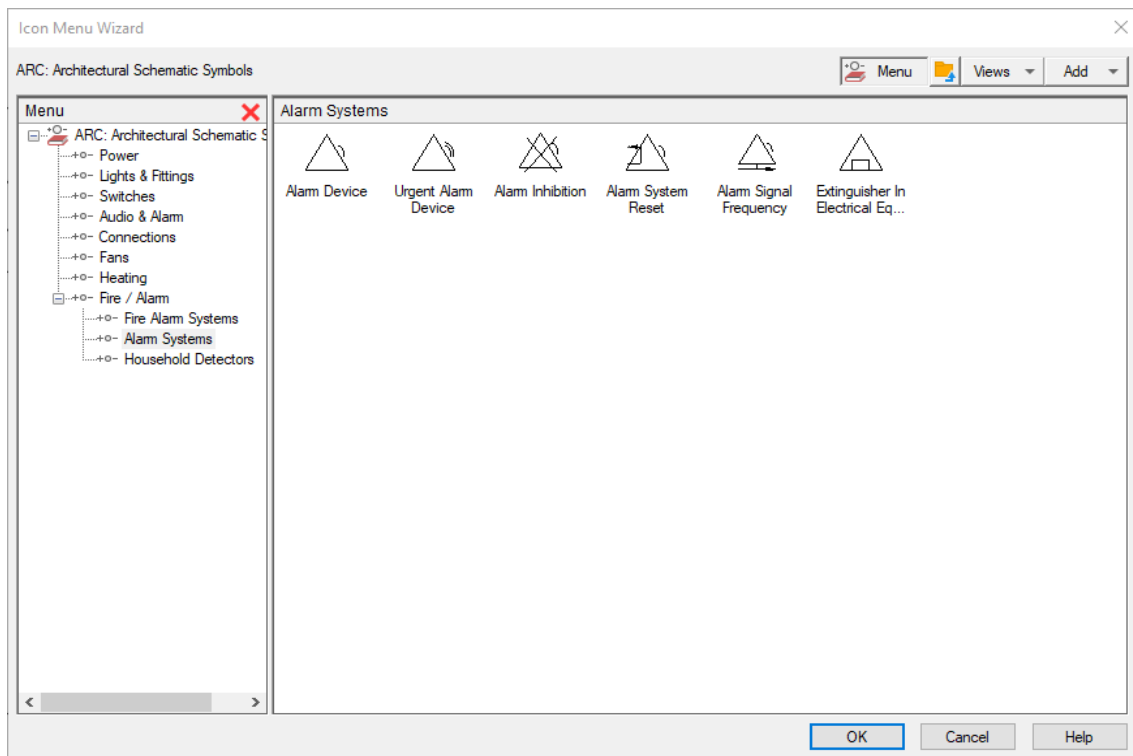
➤ Fire / Alarm:



➤ **Fire / Alarm > Fire Alarm Systems:**



➤ **Fire / Alarm > Alarm Systems:**



➤ Fire / Alarm > Household Detectors:

