

# Creating an Electromechanical Link

## AutoCAD® Electrical / Inventor

Linking an AutoCAD® Electrical project to an Inventor project requires creating a link file and defining the two projects to link. The following only describes creating the link file in AutoCAD® Electrical initially, but the process is the same the other way around. The process involves two steps:

1. In either AutoCAD® Electrical or Inventor, create the link file and point to the project for that product
2. In the other product, complete the link by browsing to the previously created link file and pointing to a project in that product

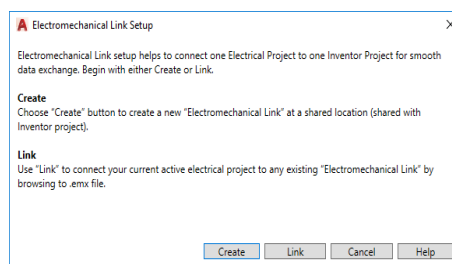
### Creating an Electromechanical Link in AutoCAD® Electrical

The electromechanical link is an option to connect the electrical schematics with its associative Autodesk Inventor 3D model. With the AutoCAD® Electrical project activated:

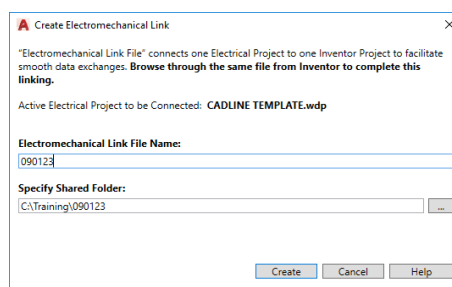


Select *Electromechanical* ribbon tab >

The Electromechanical Link Setup dialogue will be displayed:



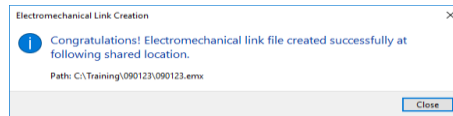
Select



Select



The following dialogue will be displayed:



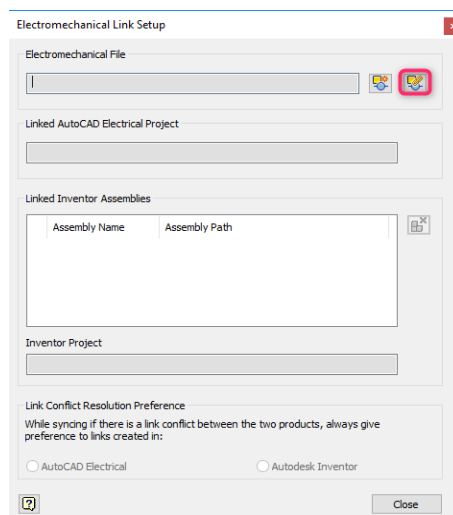
Select  until fully closed


### Linking Inventor with An Existing EMX File Created in AutoCAD® Electrical



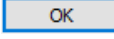
Select *Electromechanical* ribbon tab >

The Electromechanical Link Setup dialogue will be displayed:



Select  *Link to an electromechanical file*

Browse  to the \*.emx file and select 

You may be prompted to save changes to dependent parts/assemblies. Select your choice and 

Select 

## Link Conflict Resolution Preference

Select the required option to set the priority of AutoCAD® Electrical or Autodesk Inventor in case of conflict during synchronisation. Basically, if there is any conflict between files of AutoCAD® Electrical and Autodesk® Inventor then priority will be given to the software for which the radio button is selected in the *Link Conflict Resolution Preference* area.

**Link Conflict Resolution Preference**

While syncing if there is a link conflict between the two products, always give preference to links created in:

AutoCAD Electrical       Autodesk Inventor

