


# Defining Wire Definitions Within Inventor

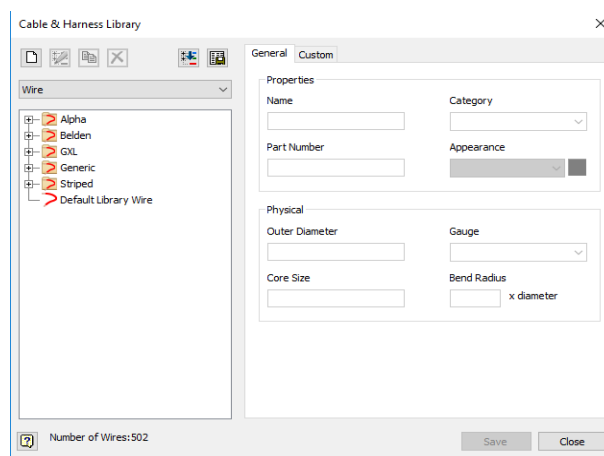
## Autodesk Inventor 2019

Wire type definitions must be defined correctly within Autodesk Inventor and match the wire types defined in AutoCAD Electrical if you wish the wire types to be created from the AutoCAD Electrical data, subsequently routed and displayed correctly within your assembly. Within the *Cable & Harness Library* dialogue, you can define new wire, cable, raw ribbon cable, splice or virtual part descriptions to the library or update existing library definitions.

The Inventor wire *Part Number* **MUST** match the wire types (layer name) defined within AutoCAD Electrical. If they are slightly different Inventor will not recognise them and use a generic wire type instead for routing purposes.

You must  an existing harness for the *Cable & Harness* ribbon tab to be displayed.

Select the *Cable & Harness* ribbon tab > *Manage* panel >  **Library**



Create a new wire definition



Edits an existing wire definition



Copies a wire definition



Deletes a wire definition



Imports Library objects



Exports Library objects

**To copy an existing wire type:**

The easiest method of creating a new wire type is to copy an existing similar one as you have less to edit.

Ensure  is selected

Expand [+] *Generic*

Right click over 10AWK\_BLK and Copy

Right click over the copied wire definition and Edit

Change the values accordingly

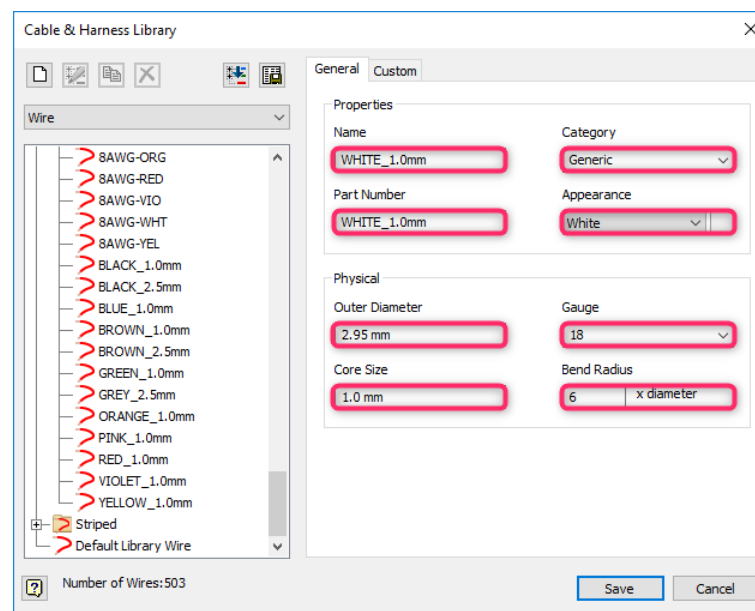
**To create a new wire type from scratch:**

Ensure  is selected

Expand [+] *Generic*

Select  *New*

Enter the details accordingly:



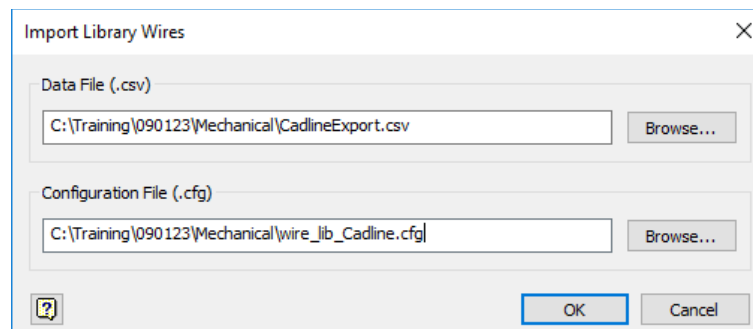
Select

Select

You can also import an existing definition file. You can import new wire, cable, raw ribbon cable, splice or virtual part descriptions to the library or update existing library definitions. More information on what can be imported can be found at:

[Cable and Harness Library import configuration file format](#)

Select  *Import Library Objects*



To import information from a csv file, you must have both a csv file and a cfg (configuration) file.

**The cfg file is made up as follows (for wires):**

libwires

c:\temp\log.txt

Wire Name,Appearance,Outer Diameter,Category,Part Number,Gauge,Color,Core Size,Bend Radius

text,text,length,text,text,text,text,length,unitless

none,none,mm,none,none,none,none,mm,none

**The csv file is made up as follows e.g.:**

BLACK\_2.5mm,Black,3.3,Generic,BLACK\_2.5mm,14,Black,2.5,6

WHITE\_1.0mm,White,2.95,Generic,BLUE\_1.0mm,18,White,1.0,6

Select 

Select 

You can also export the *Cable & Harness* Definitions to another Inventor installation (if not shared data).

Select  *Export*