

# elecworks™ Tips & Tricks

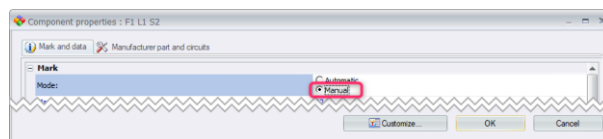
## Fixing Your Component, Wire, Cable, Terminal, Function & Installation Marks

As a default, when you add new components into a schematic, the new components will assume the next available component tag irrelevant upon where you place the component in the set of schematics. If the design has not yet gone to manufacture, then of course you can do a *Renumber Marks* or *Renumber Wires*.

However when you are ready to issue a project for manufacture, you may wish to fix your component TAG's, wire/equipotential numbers, cable numbers, terminal numbers, functions and locations to avoid the possibility of items being changed inadvertently after build has started or indeed completed.

If the marks of the items are set to manual, they cannot be changed automatically and therefore the project is effectively in an "as-built" state.

You can right click on each individual item open the properties of each entity, one by one, and set the marking as manual but this of course is labourious if you have to do everything.

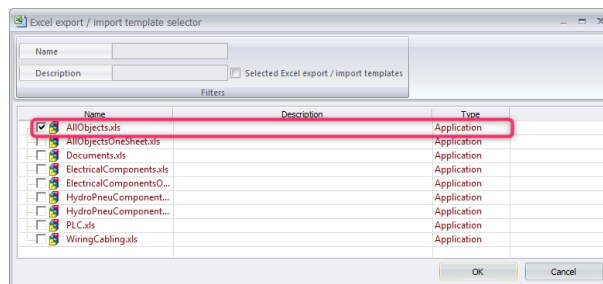


You can also do the entire project globally.

Select *Import/Export* ribbon tab > 

Select 

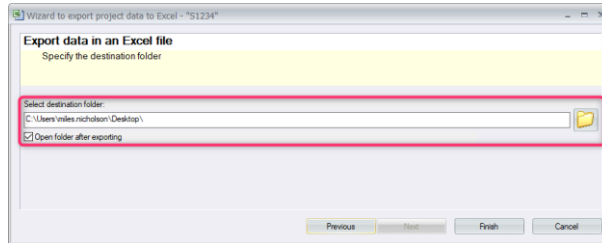
Select the template *allobjects.xls*




Select 

Select 

Define a directory file location:



Select 

The spreadsheet will have as many sheets as types of items existing within the project.

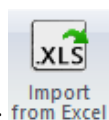
	Mark	Manual mark	Mark root	Mark number	User data 1	User data 2	Send radius	Color	Diameter	Duct path	Length	Wire number	Section or gauge	Section type	Signal
3	2L1	0	-1	0			0	BN	5.75	0	0	0	2.5	0	
4	2L2	0	-1	0			0	BK	5.75	0	0	0	2.5	0	
5	2L3	0	-1	0			0	GY	5.75	0	0	0	2.5	0	
6	3L1	0	-1	0			0	BN	5.75	0	0	0	2.5	0	
7	3L2	0	-1	0			0	BK	5.75	0	0	0	2.5	0	
8	3L3	0	-1	0			0	GY	5.75	0	0	0	2.5	0	
9	3L1	0	-1	0			0	BN	3.75	0	0	0	2.5	0	
10	3L2	0	-1	0			0	BK	3.75	0	0	0	2.5	0	
11	3L3	0	-1	0			0	GY	3.75	0	0	0	2.5	0	
12	E	0	-1	0			0	GNVE	5.75	0	0	0	2.5	0	
13	E	0	-1	0			0	GNVE	5.75	0	0	0	2.5	0	
14	4	0	-1	6			6	RD	5	0	1	1	1.0	0	
15	3	0	-1	6			6	RD	5	0	0	0	1.0	0	
16	1	0	-1	6			6	RD	5	0	0	0	1.0	0	
17	2	0	-1	6			6	RD	5	0	0	0	1.0	0	
18	4L1	0	-1	0			0	BN	3.75	0	0	0	2.5	0	
19	4L2	0	-1	0			0	BK	3.75	0	0	0	2.5	0	
20	6	0	-1	6			6	RD	5	0	1	1	1.0	0	
21	4	0	-1	6			6	RD	5	0	0	0	1.0	0	
22	5	0	-1	6			6	RD	5	0	0	0	1.0	0	
23	5	0	-1	6			6	RD	5	0	1	1	1.0	0	
24	6	0	-1	6			6	RD	5	0	0	0	1.0	0	
25	6	0	-1	6			6	RD	5	0	2	2	1.0	0	
26	1L1	0	-1	0			0	BN	3.75	0	0	0	2.5	0	
27	1L2	0	-1	0			0	BK	3.75	0	0	0	2.5	0	
28		0	-1	0			0		0	0	0	-1		-1	
29		0	-1	0			0		0	0	0	-1		-1	
30		0	-1	0			0		0	0	0	-1		-1	
31	13	0	-1	0			0		1.7	0	0	0	0.75	0	
32	20	0	-1	0			0		1.7	0	0	0	0.75	0	
33	27	0	-1	0			0		1.7	0	0	0	0.75	0	
34	14	0	-1	0			0		1.7	0	0	0	0.75	0	
35	21	0	-1	0			0		1.7	0	0	0	0.75	0	
36	12	0	-1	0			0		1.7	0	0	0	0.75	0	
37	28	0	-1	0			0		1.7	0	0	0	0.75	0	
38	15	0	-1	0			0		1.7	0	0	0	0.75	0	
39	22	0	-1	0			0		1.7	0	0	0	0.75	0	

For each worksheet, you must change the **Manual mark** value from "0" to "1" for the respective items.

	Mark path	Mark	Permanent mark	Manual mark	Mark root	Mark number	Current rating
3	F1 L1 Q1	Q1	0	1	Q	1	
4	F1 L1 Q3	Q3	0	1	Q	3	2A
5	F1 L1 Q2	Q2	0	1	Q	2	2A

**Note:** Descriptions/marks and other data can also be changed and this will be updated back in the project.

Save  the Excel file



Select *Import/Export* ribbon tab >



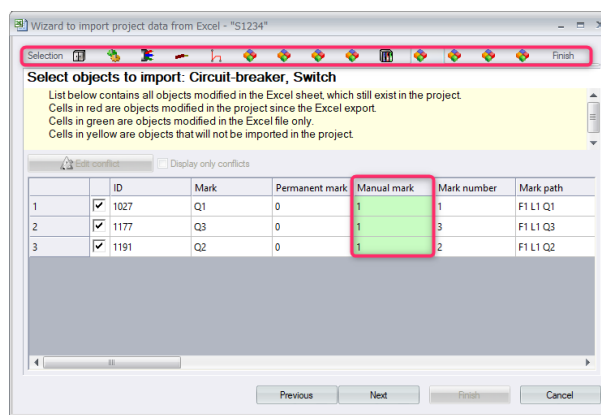
Select

Browse to the file directory location for *allobjects.xls*

Select

Select

For each type of item, a tab will be shown with the required changes highlighted to be done.



Select  for each tab.

You can  an item if you do not want the changes to be made.

Select  for the changes to be made to the project. All marks are now set to manual.

If you want to revert the fixing of the marks, then the process can be repeated setting the manual mark value to "0".