

Component Update from Catalogue


AutoCAD Electrical 2019

You may have an existing project where parts have been defined. When you assign a catalogue part to a component, AutoCAD Electrical annotates the component with all related values from the catalogue database at that moment in time. Parts information such as technical data, pin information etc may be changed by the manufacturer or indeed yourself and this will result in your project having out of date information (assuming the project has not been built).

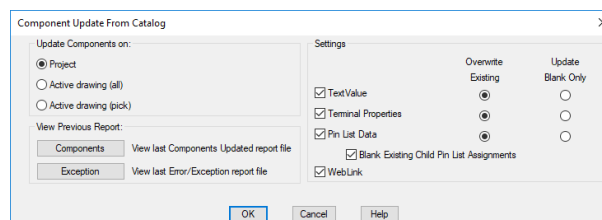
However, you can update the components with the new values. The feature updates the following values:

- Textvalue
- Terminal properties
- Schematic parent pin list
- Weblink

The feature creates two reports. The *Components report* lists the updates made on components. The *Exception report* lists the components with potential mismatches. The user can surf a list of related components that may need updates based on the changed values, such as child pins.

Select *Project* ribbon tab > *Other Tools* panel >  **Component Update From Catalog**

The following dialogue will be displayed:



Select the settings you wish to change.

Select whether you want to update the *Project*, *Active Drawing* or *Active Drawing (pick)* (selected components on a drawing).

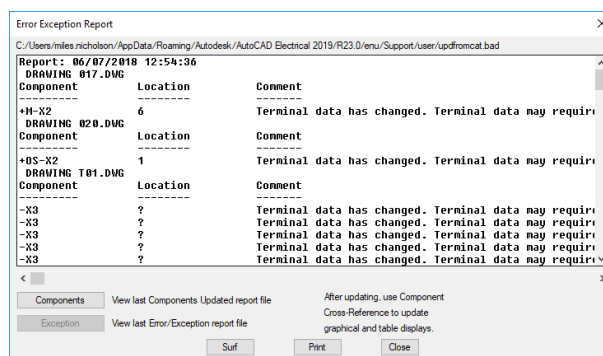
Select

Select

Select

N.B. The process will go in and out of every drawing within the project.

When the process is completed the following dialogue will be displayed e.g. shown with updated information.



When the dialogue is initially shown, exceptions are shown:

Select for which components have been updated

Select to revert to the *Error Exception Report*

Select to navigate around the issues