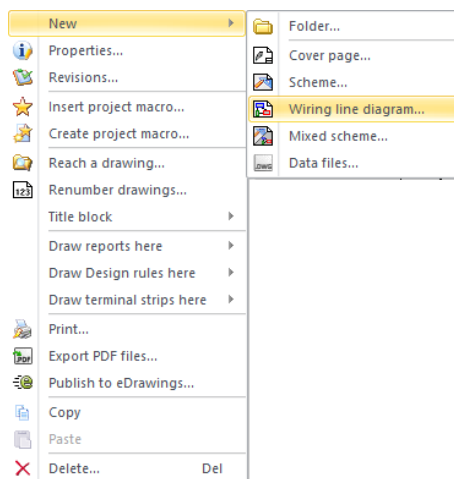


elecworks™ Tips & Tricks

Creating a Cable or Harness Drawing

In **elecworks™** you can create a cable drawing without having to create a detailed connection drawing! This is extremely useful for harness design and allows the user to still provide comprehensive connections reports without the need to create a schematic detailed connection diagram.

Right click over the Document Book

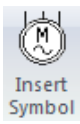



Select *New > Wiring Line Diagram*

Right click over the drawing > Properties and define the following:

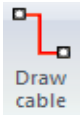
Description (English): Cable Drawing

Select 

Select  *Insert Symbol*

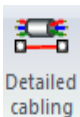
Insert two  *Female connectors* as per the target drawing

Define the *Manufacturer* as HARTING
 Define the *Reference* as 09152092701



Select **Draw Cable**

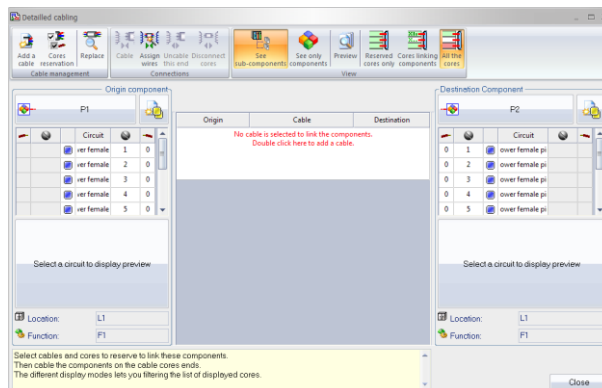
Draw a cable between the two connectors as per the target drawing



Select **Detailed Cabling**

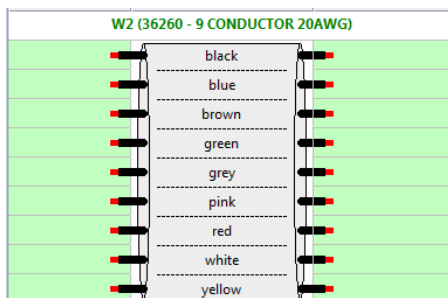
Pick the cable

The connectors and the available pins will be shown in the following dialogue

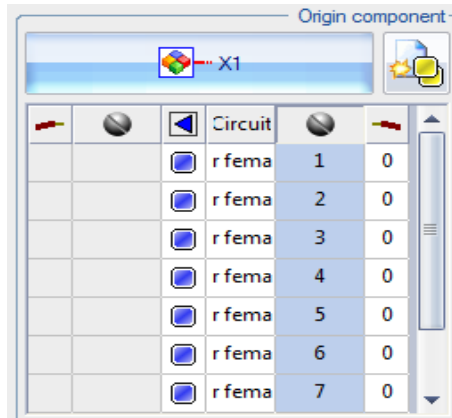


Select **Add a Cable**

Add a Lapp 36260 9 conductor cable

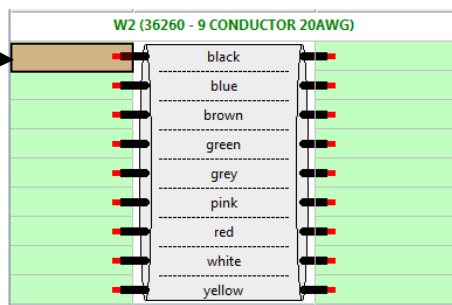


Using *Shift*, highlight all of the *Origin Component* pins as shown below

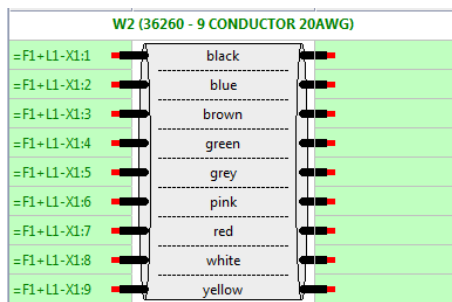


Still holding *Shift*, drag onto the first core of the cable (highlighted)

Drag and pick here



The *Origin Component* pins will now be shown in the left hand side of the cable



Repeat the process for the right hand side

Origin	Cable	Destination
W2 (36260 - 9 CONDUCTOR 20AWG)		
=F1+L1-X1:1	black	=F1+L1-X2:1
=F1+L1-X1:2	blue	=F1+L1-X2:2
=F1+L1-X1:3	brown	=F1+L1-X2:3
=F1+L1-X1:4	green	=F1+L1-X2:4
=F1+L1-X1:5	grey	=F1+L1-X2:5
=F1+L1-X1:6	pink	=F1+L1-X2:6
=F1+L1-X1:7	red	=F1+L1-X2:7
=F1+L1-X1:8	white	=F1+L1-X2:8
=F1+L1-X1:9	yellow	=F1+L1-X2:9

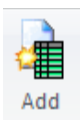
Select 

The cable and its connections will now be shown in cable reports even though we have not produced a detailed schematic!
This is obviously a simple cable but more complex drawings can easily be produced

Select the *Process* tab



Select *Edit Reports*



Select *Add* (if you do not have a *List of Cable Cores* report shown)

Check the option *WiringCable_Metric* *List of cable cores*

Select 

The cable and its connections will now be shown in the report!

	Cable	Core	Number	Origin	Destination	Wire number
1	W1	black	1	-P1:1	-P2:1	
2	W1	blue	2	-P1:2	-P2:2	
3	W1	brown	3	-P1:3	-P2:3	
4	W1	green	4	-P1:4	-P2:4	
5	W1	grey	5	-P1:5	-P2:5	
6	W1	pink	6	-P1:6	-P2:6	
7	W1	red	7	-P1:7	-P2:7	
8	W1	white	8	-P1:8	-P2:8	
9	W1	yellow	9	-P1:9	-P2:9	

