

# elecworks™ Tips & Tricks

## Exporting Markers to a Label Printing Machine

Labelling of your equipment is time consuming (up to 40% of manufacturing time), error prone (consistency issues with the schematics) and expensive (last minute label requirements and cost of setup of printing).

There are many manufacturers of label printing machines such as Critchley, Markin Genius, Chembre, Murrelektronik, Raychem, Wago & Weidmuller to name a few.

Many companies prior to elecworks™ would often manually produce a report or drawing to provide to a label manufacturer. Even after deployment of elecworks™, the benefit of exporting your label requirements to a labelling machine can be overlooked because it is a different departments responsibility.

However, this is not to the benefit of the company.

In this tips and tricks we look at how this can be achieved.

The project in elecworks™ must be fully numbered. To export component, terminal, wires and cable markers:

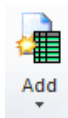


Reports

Select the *Process* ribbon tab > *Reports*

Ensure you have *List of components tags*, *List of wire Origin\Destination tags*, *List of cables tags* and *List of terminals strips tags* shown in the Report Manager

- 4 List of wires origin\destination tags
- 5 List of terminal strips tags
- 6 List of components tags
- 7 List of cables tags



Add

If you haven't then select *Add*

Ensure the following selections are ticked

<input checked="" type="checkbox"/>	MarkListCable_Metric	List of cables tags	Application
<input checked="" type="checkbox"/>	MarkListComponent_Metric	List of components tags	Application
<input checked="" type="checkbox"/>	MarkListTerminal_Metric	List of terminal strips tags	Application
<input checked="" type="checkbox"/>	MarkListWireOriginDestination_...	List of wires tags	Application

Select

OK



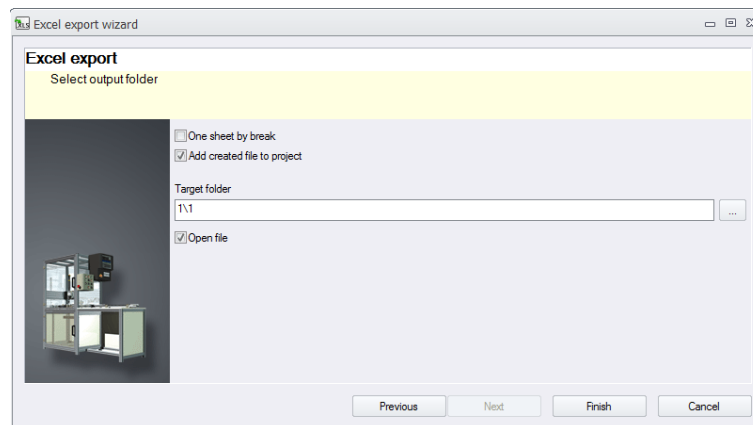
Select **Excel export** *Excel export*

Ensure the following selections are ticked

<input checked="" type="checkbox"/>	List of cables tags	MarkListCable_Metric.xml
<input checked="" type="checkbox"/>	List of components tags	MarkListComponent_Metric.xml
<input checked="" type="checkbox"/>	List of terminal strips tags	MarkListTerminal_Metric.xml
<input checked="" type="checkbox"/>	List of wires tags	MarkListWireOriginDestination_Metric.xml

Select **Next**

You can add the excel reports into the project if you wish



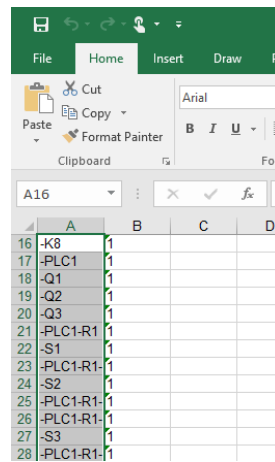
Select **Finish**

elecworks™ will automatically start Microsoft Excel and produce a separate worksheet for each marking type.

Most modern labelling software will accept an Excel (XLS) import. You will need to consult your labelling company or labelling machine for details.

Open the Excel spreadsheet containing your markers and highlight the labels

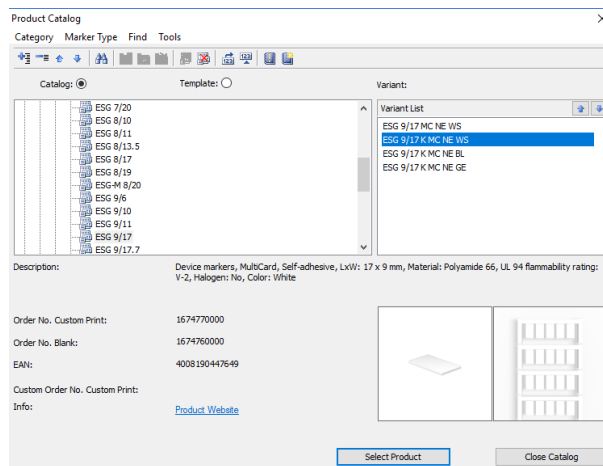
Select Edit > **Copy**



Start-up your labelling software. In our example we are using the Weidmuller PrintJet Pro

<http://www.markertech.co.uk/>

Choose the correct label type you want



Select Select Product

Select *Edit > Paste* and your markers will now be ready to print!

