

elecworks™ Tips & Tricks

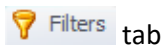
Downloading the Correct 2D Footprint for a Manufacturers Part

This tips and tricks shows you how to download the Correct 2D Footprint for a Manufacturers Part

Select the *Library* ribbon tab



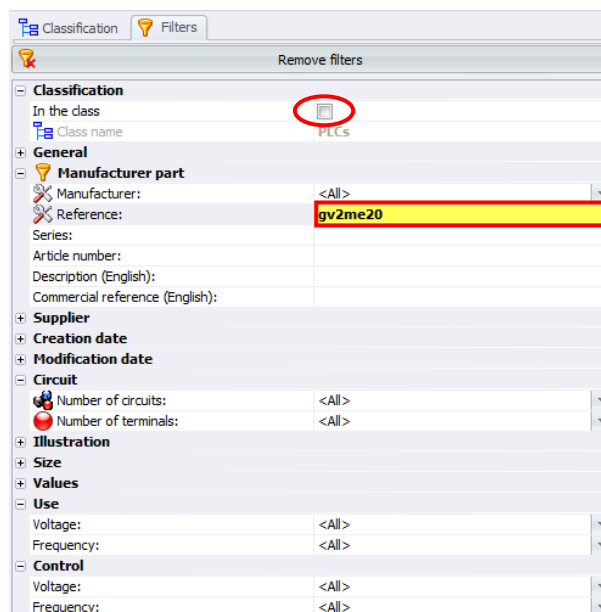
Select the



Select the **Filters** tab

In the filters section:

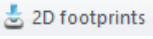
1. Deselect *In the Class*
2. Type in “GV2ME20” in the *Reference*



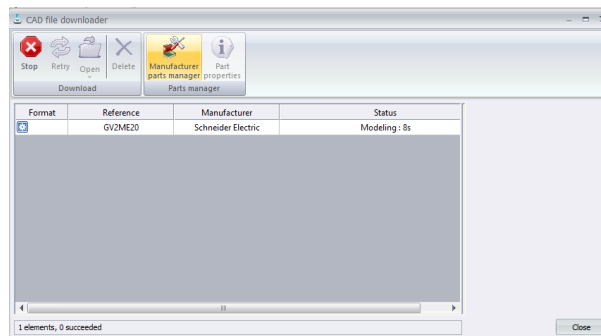
Ensure *Automatic Refresh* is selected



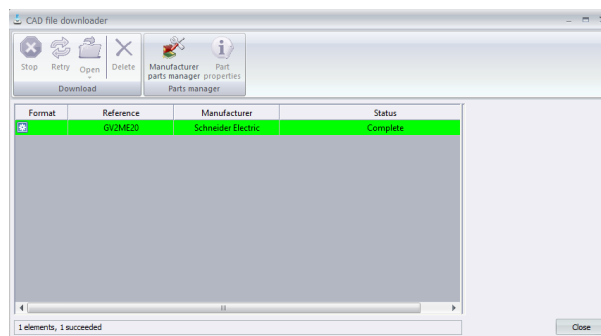
Highlight **GV2ME20** from the list on the right of the dialogue

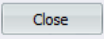
From the *Get more content* panel, select 

The following dialogue will appear and will indicate a time to the right of the dialogue:



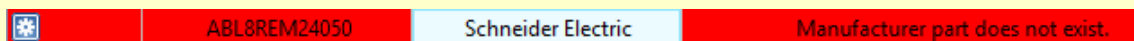
Once completed the part will be **highlighted in green**



Select  to complete

The 2D footprint will be added to the 2D Footprint library and in the correct class category

If the part does not exist on Traceparts then the following message will be displayed



This also notifies Traceparts of the requirement of the footprint