

elecworks™ Tips & Tricks

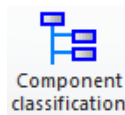
Component Root Prefix / Identifier

A component root prefix is the prefix that’s used to identify the component e.g. K for a contactor.

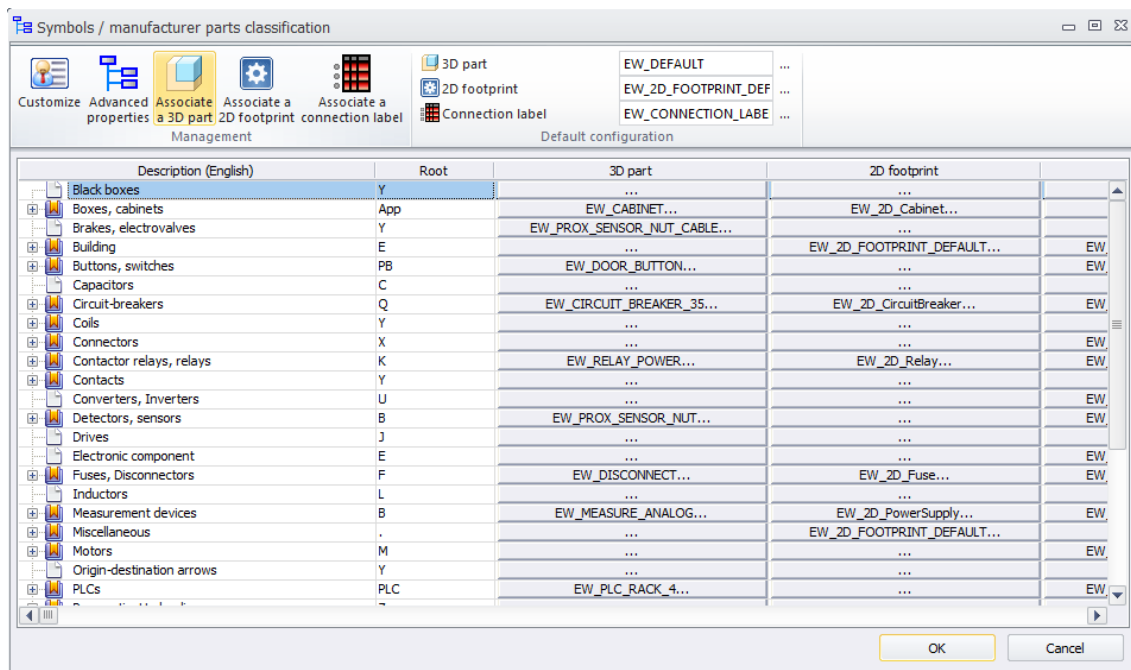
Component root prefixes can be defined in a couple of ways:

- Globally by component classification
- Individually on a per symbol basis

Globally By Component Classification



Select the *Library* ribbon tab > *Customisation* panel >



The *Description* column describes the classification of the component where the *Root* column defines the identification root prefix.

As an example *Buttons, Switches* are defined with a root of “PB”. In this example we are going to change the root to be “S”.

Select

All new switches will now be numbered with the root of "S"

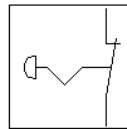
All existing switches within an existing project may be renumbered using the *Update Marks* command

Individually On A Per Symbol Basis

Each symbol however can also have its own unique root identifier. This is set within the properties of the symbol. As an example



Select the *Library* ribbon tab >



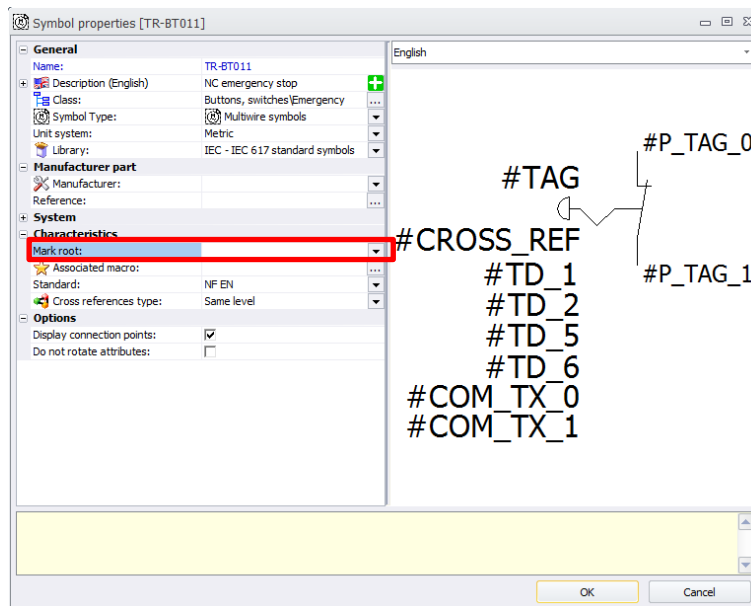
NC emergency stop

Select *Buttons, Switches > Emergency* and highlight



Properties...

Select



The global root classification identifier can be overruled by defining the *Mark Root* within the properties of the symbol.

Try it out!