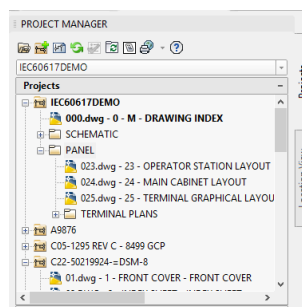


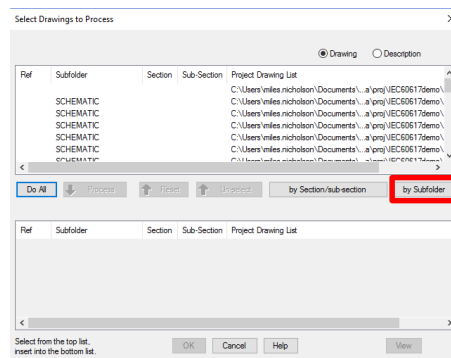
Sheet Maximum on a Specific Type (e.g. SCHEMES or GA)

AutoCAD Electrical 2017

The main method of having the sheet maximum value to be based on a specific drawing type would be by sub-folders. In AutoCAD Electrical you can create sub-folders within the project which can be used as a means of separating drawings into drawings of a different type.

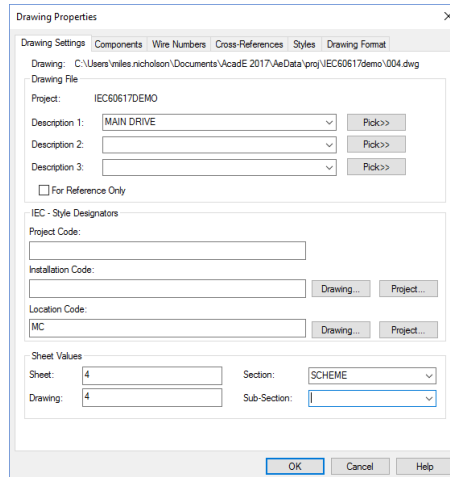


When you are running a *Title Block Update* you are able to filter the set of drawings by the by Subfolder



However, on some occasions you might use the sub-folders for a different purpose and still require the ability to filter the drawings by type. In this example you can use the *Section* and *Sub-section* fields as an alternative method.

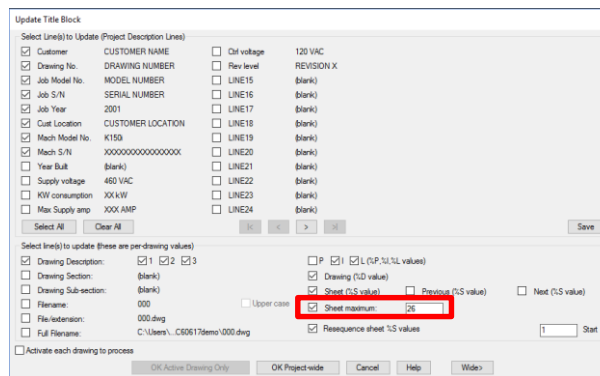
For all of the schematics, right click over the specific drawing; select *Properties > Drawing Properties*. In the Section, define the value as SCHEME.



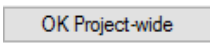
Repeat for all schematics

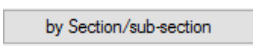
Define the general arrangements as GA

Right click over the activated project and select *Title Border Update*



You will have to manually set the *Sheet Maximum* to the amount of drawings that are SCHEMES or GA's

Select 

Select 

Select SCHEME from the dropdown (or the specific type of drawing)

Select 

Select

The title borders will only be updated on the selected drawing type thus meaning that you can apply a sheet maximum based on the drawing type rather than the total number of drawings in the project.

The principle of having a *Sheet Maximum* by is exactly the same where you have to manually enter the *Sheet Maximum* value.