

# How to Create a Multiple Column Drawing Index Sheet

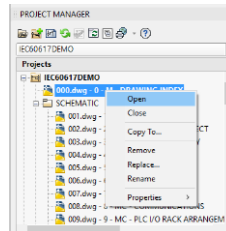
## AutoCAD Electrical 2017

Reports such as *Drawing List Report* can mean due to the quantity of data require reports to be split into sections and also go across multiple drawings. This month's Tips & Tricks explains how this is achieved.

Because AutoCAD Electrical stores all of its intelligence inside of the drawings rather than an external database, the drawings have to be updated with the title box information we have edited earlier. Please ensure that a *Title Block Update* has been performed prior IF you wish to produce a *Drawing List Report*.

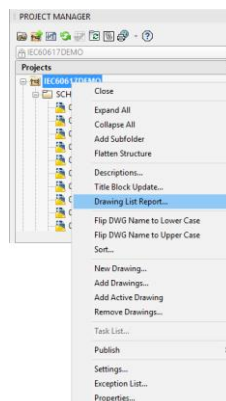
*Double left click* on the project name to reveal the drawings that are contained within.

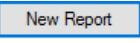
*Right click* on the selected drawing that you wish to have a drawing index in and then select *Open*. This will open up the drawing in the AutoCAD window.



*Right click* over the current activated project

Select *Drawing List Report*

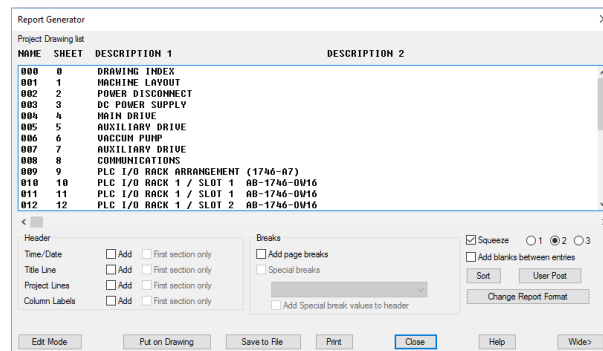
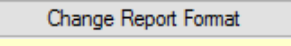


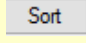
Select 

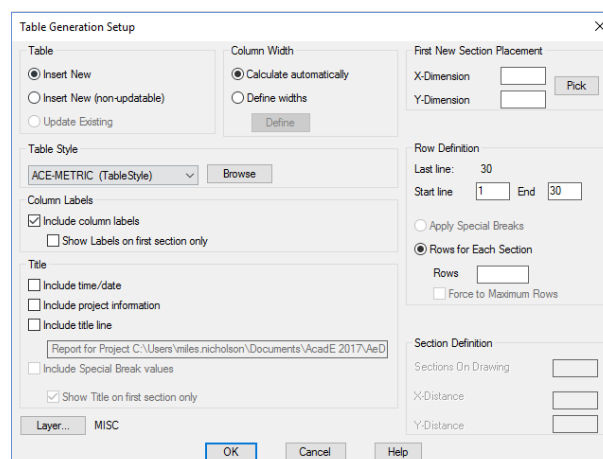
 Select 

 Select 

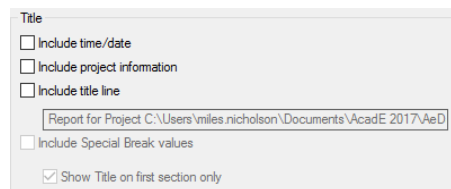
The information will be shown in a dialogue similar to below:


 The fields that are reported can be changed by selecting 

 The sort criteria of the information can be changed by selecting 

 Select 

 Ensure the Table Style is set to ACE-METRIC. The default is ACE-INCH unless you have deleted the Inch option. ([Deleting the Inch Option](#))

Users can determine additional information that will be included in the report table



Title

Include time/date

Include project information

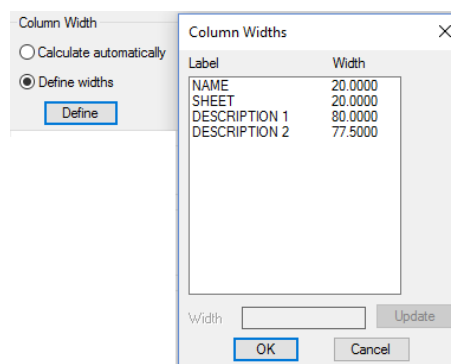
Include title line

Report for Project C:\Users\miles.nicholson\Documents\AcadE 2017\AeD

Include Special Break values

Show Title on first section only

Column widths can be adjusted so that your report fits between two points on your border



Column Width

Calculate automatically

Define widths

Define

Column Widths

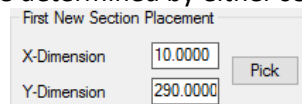
Label	Width
NAME	20.0000
SHEET	20.0000
DESCRIPTION 1	80.0000
DESCRIPTION 2	77.5000

Width  Update

OK Cancel

Select

The insertion point of the report table can be determined by either selecting  or by typing co-ordinates

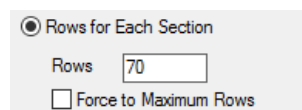


First New Section Placement

X-Dimension

Y-Dimension

The number of rows for each section can be defined. This is typically around 70 rows on an A3 drawing but this figure would need to be adjusted according to your title border



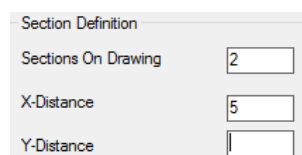
Rows for Each Section

Rows

Force to Maximum Rows

You also have the ability to show all 70 rows even if you have less data ( Force to Maximum Rows)

You can determine the number of sections that are placed and their offset between each section



Section Definition

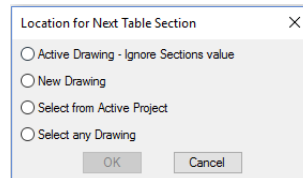
Sections On Drawing

X-Distance

Y-Distance

**I have a lot of drawings in my project and cannot fit the data on one page?**

If we had 150 drawings in the project and you had defined 2 sections of 70 rows, that would allow 140 drawings to be listed on the first drawing; AutoCAD Electrical will then prompt the user with what they would like to do!



If  *New Drawing* is selected, you are prompted for the next available drawing file name and the template you wish to use

