

Translation

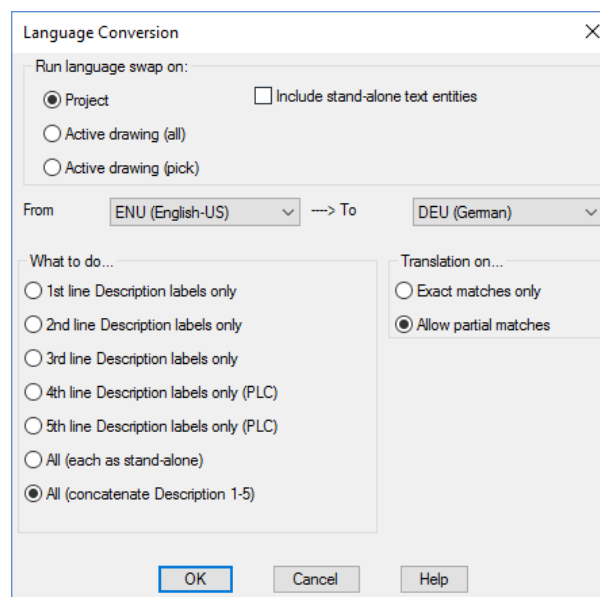
AutoCAD Electrical 2017

AutoCAD Electrical has a built in “translator” within the software. This is effectively a word and phrase swap facility. It translates component description text from one language to another. Description text and switch position text is processed on schematic and panel components and all other associated drawings.

Select the *Project* ribbon tab

Select  *Language Conversion*

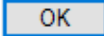
The following dialogue will appear:



The user is able to translate the unique drawing, selected objects on the drawing or the entire project. Both attributes and text can be translated.

The user is able to specify which AutoCAD Electrical information is translated and to specify the language to / from.

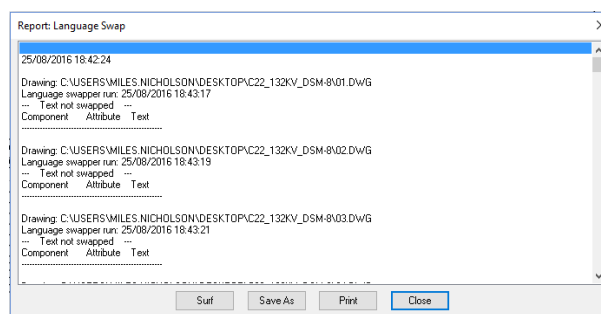
In this example, we will choose English to German.

After choosing your options, select 

Select 

Select 


A log file will be created and will be instantly be shown at the end of the translation process.

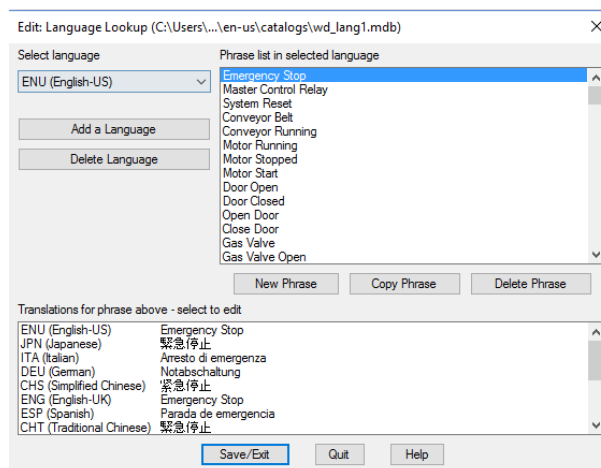


The file may be saved or you may *Surf* to the reported error.

The translation database may be edited and new words and phrases added:

Select the *Project* ribbon tab

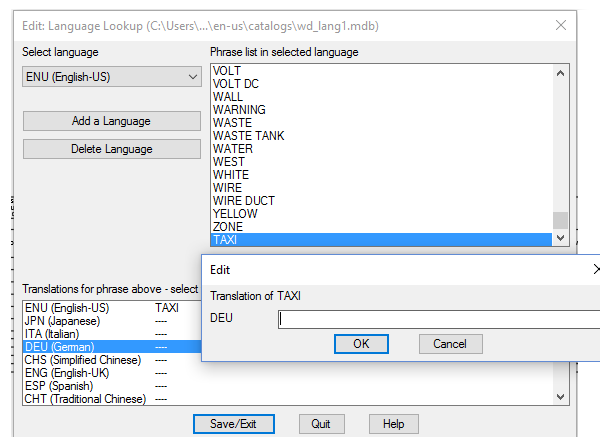
Select  *Edit Language Database File*



To add a new word or phrase, select 

Type the English value and the word will appear in the list to the upper right of the dialogue.

You can then highlight the word from the list and then type the equivalent word for the translated language by selecting the language to the lower left



Select **OK** and **Save/Exit** to save the changes

N.B. The translations are held in a Microsoft Access database so if you have translations in an Excel format, these can be imported in. If you would like further information on this, please email customer.services@cadline.co.uk