

# Assigning Mandatory & Optional Accessories


## AutoCAD Electrical 2017

### Mandatory Accessories:

A good example part for the use of mandatory accessories is a switch or pushbutton. A switch often contains other parts such as the contact block, the label plate, a led/lamp etc.

Select  *Edit Component*

Select 

Select  to create a new part

Add a new part similar to the entry below. In this example we are using a NO Momentary pushbutton symbol to edit:

<i>Catalog</i>	MAIN_9999
<i>Manufacturer</i>	<<Your Preferred Supplier>>
<i>Description</i>	PUSH BUTTON – MOMENTARY
<i>Type</i>	22.5mm FLUSH
<i>Style</i>	GREEN
<i>Contacts</i>	1 NO
<i>AssemblyCode</i>	ASSY GROUP NAME

The *AssemblyCode* is assigned to the primary component.  
The *AssemblyList* is assigned to the secondary (mandatory accessories) components.

Define an assembly code name. This can be anything.

Select Add to add another new record for the accessories.

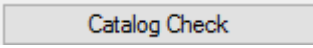
On a new blank row, define the following:

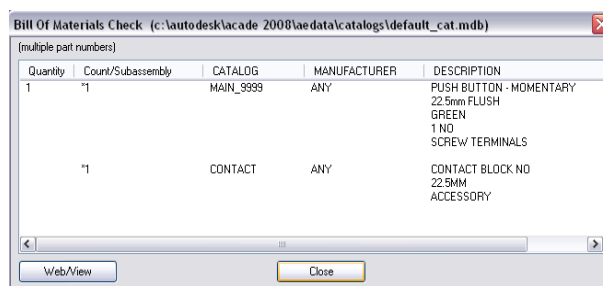
<i>Catalog</i>	CONTACT
<i>Manufacturer</i>	<<Your Preferred Supplier>>
<i>Description</i>	CONTACT BLOCK N/O
<i>Type</i>	22.5mm
<i>Style</i>	ACCESSORY
<i>AssemblyList</i>	ASSY GROUP NAME

Define the same code name as the main part but in the *AssemblyList* field.

Add as many mandatory parts as required with each mandatory accessory having the same *AssemblyList* part code.

Select  to accept the new parts

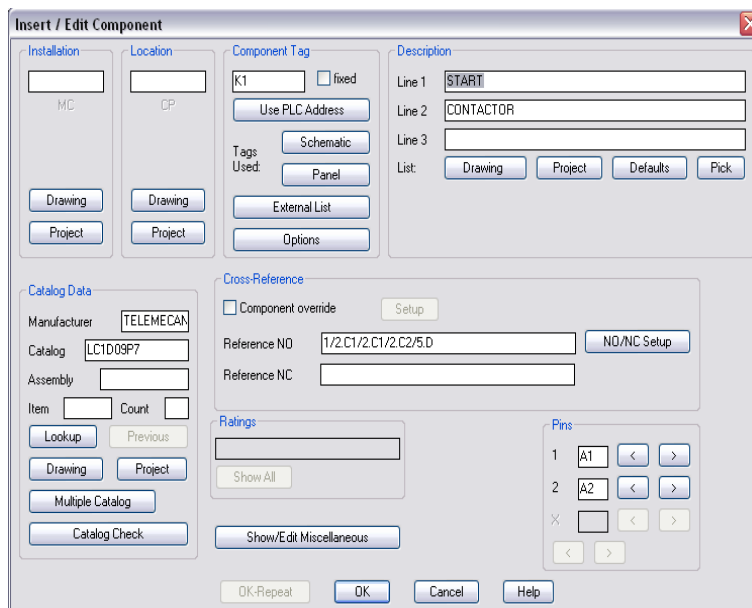
Once assigned to a symbol, select  and the multiple accessories will be shown:



**Optional Accessories:**

Optional accessories are far simply to add. They are added on the fly and can be added to a device simply by

selecting  *Edit Component*



In this example, we are adding a top contact block to a contactor.

Select

Select  and assign your accessories.

You can change the table that accessories are pulled from. As an example, you may find auxiliary contacts within the CB table rather than the MS table if they are accessories that are used for both circuit breakers and contactors.

N.B. You can add up to 99 additional part numbers to any schematic or panel component on-the-fly. These multiple BOM part numbers appear as sub-assembly part numbers to the main catalogue part number in the various BOM and component reports.

With auxiliary contacts, these are automatically added to the pinlist arrangement of the symbol.

