

Autodesk User Conference 2016 Powered by cadline



Technical Masterclass: Sharing the Civil Design

Presented by: Peter Ingels



www.cadline.co.uk

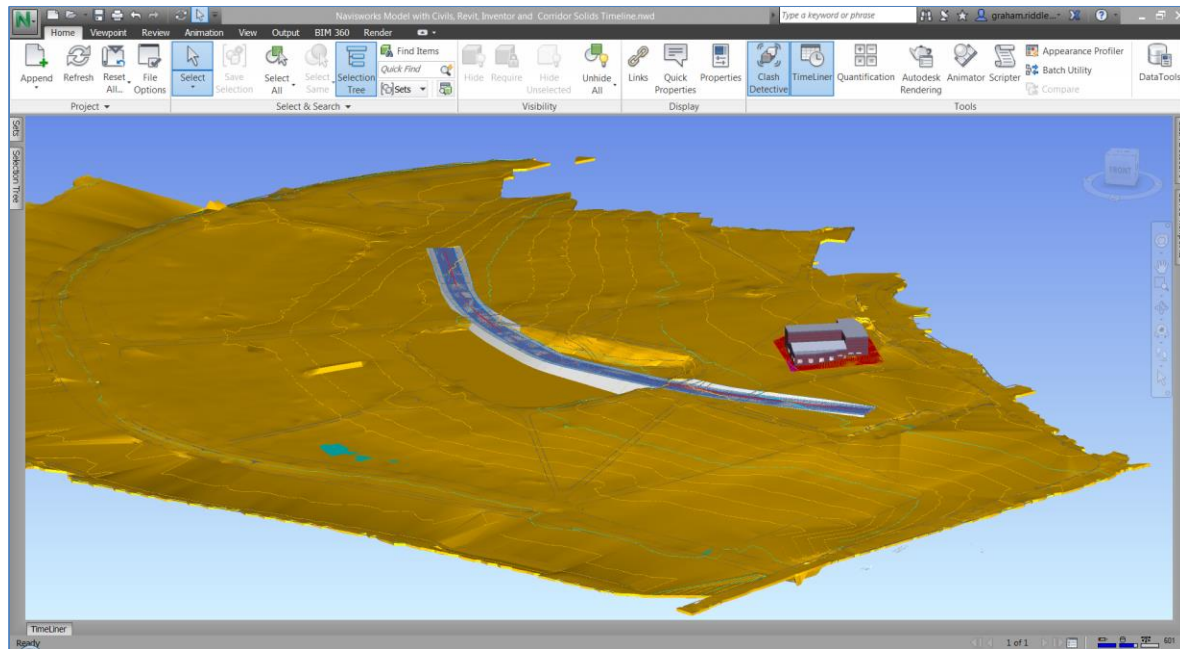


www.cadlinecommunity.co.uk

 **AUTODESK.**
Platinum Partner
Consulting Specialized

About this Presentation

- Autodesk Navisworks allows designers and contractors to inspect and interrogate Infrastructure models, bringing together information from many different stakeholders.
- Navisworks can communicate directly with Civil 3D and contains many collaboration tools such as complex clash detections, model mark-up and timeline production.
- This Masterclass will introduce users to common workflows between Civil 3D and Navisworks.







Presentation Agenda

- ✦ Preparing the Civil Model ready for Navisworks Toolbox
 - ✦ Create Solids from Civil 3D Surfaces
 - ✦ Create Solids from Civil 3D Pipe Networks
 - ✦ Create Solids from Civil 3D Corridors
- ✦ Communication between Civil 3D and Navisworks
 - ✦ NWLOAD
 - ✦ NWCOUT
- ✦ Navigating in Navisworks
 - ✦ Selection methods
 - ✦ Selection tree
 - ✦ Saving Viewpoints
 - ✦ Realism options (Gravity, Collison, Crouch, Third Person)

- ✦ Timeliner
 - ✦ Adding tasks (manual and automatic methods)
 - ✦ Working with the Gantt view
 - ✦ Importing and exporting tasks
 - ✦ Importing external data sources
- ✦ Clash Detection
 - ✦ Simple Clash Detection
 - ✦ Hard, Hard Conservative, Clearance and Duplicate clash types
 - ✦ Reviewing and exporting clash results



Technical Deliverables

-  This Presentation
-  [Click for Cadline's course overview and agenda for 2 day Navisworks for Infrastructure Engineers course.](#)
-  [Click for Cadline Community Infrastructure mini-site](#)
-  [Click for Autodesk's infrastructure blog site: From The Ground Up](#)



Call to Action



- 👉 Book a FREE Technical Discovery meeting
- 👉 Speak to your Account Manager
- 👉 Complete the request form in your packs

Book your FREE Business Discovery Meeting

Book a free Business Discovery Meeting to see how the team can help you by calling us on **01784 419922** or **complete a brief online form**.



A close-up photograph of a pocket watch. The watch has a white face with black Roman numerals and a small sub-dial at the bottom showing a moon phase. The watch is set against a warm, orange-to-red gradient background. A semi-transparent purple horizontal band is overlaid across the middle of the image, containing the text "Thank you for your time".

Thank you for your time