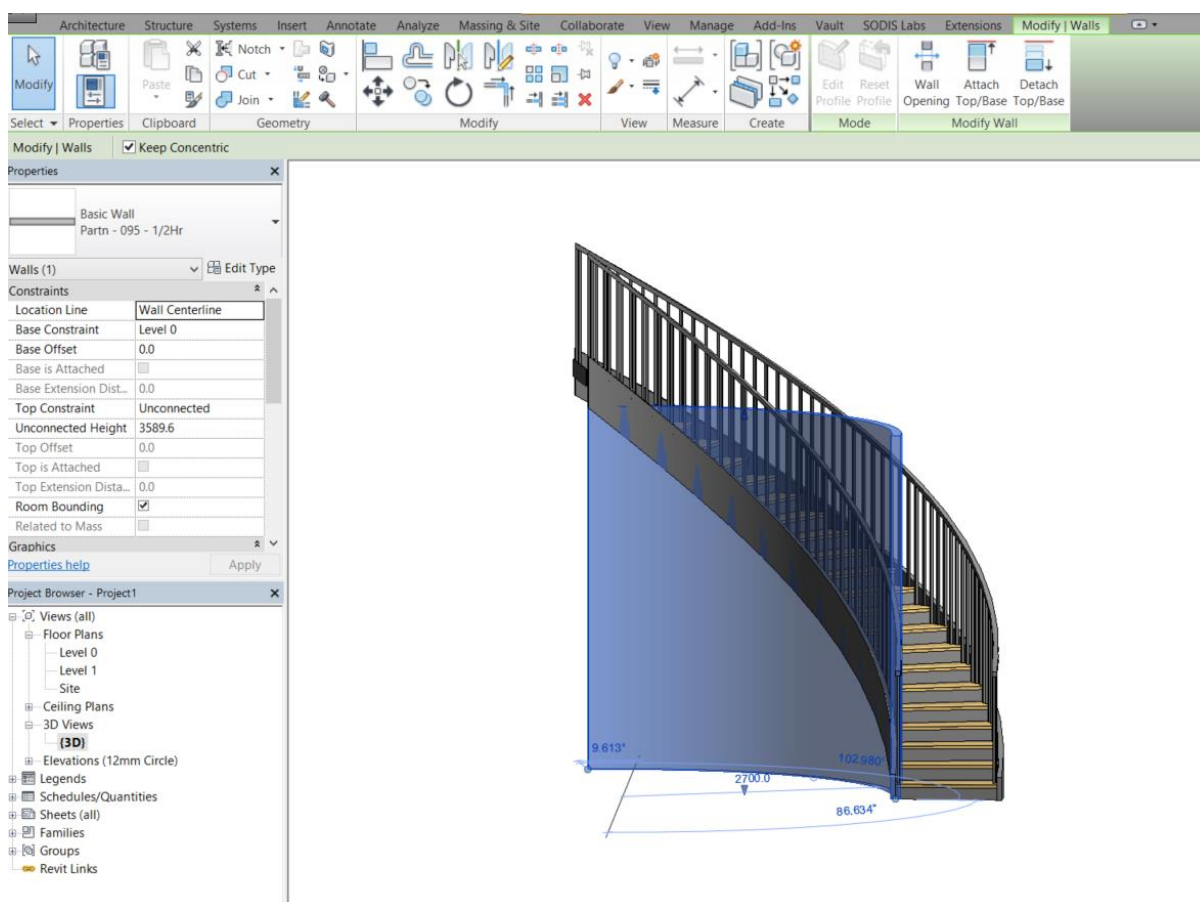


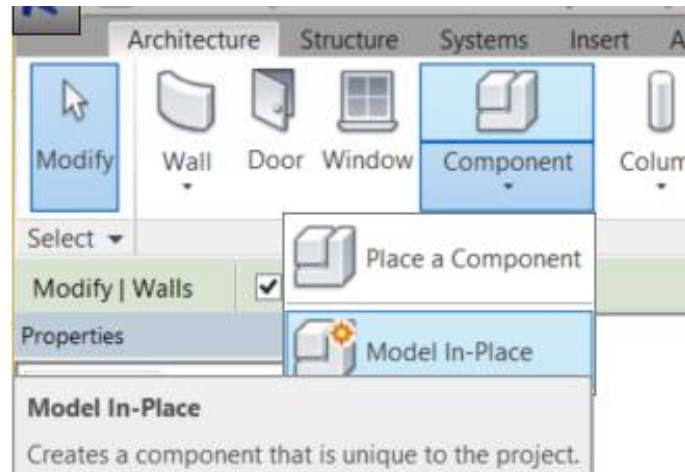
# Trimming Walls to the Underside of Curved Stairs Using Voids in Revit

When placing a curved wall under stairs in Revit the option to edit profile is not available as in straight walls, when the wall is selected.

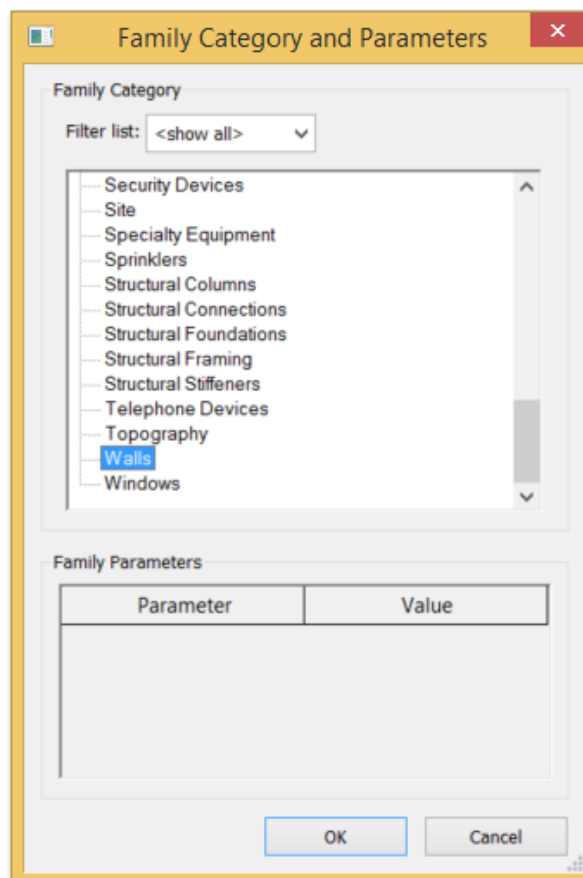


So one way to trim the top of the wall to the underside of the stair is to create a void to trim it. This is done using model in place.

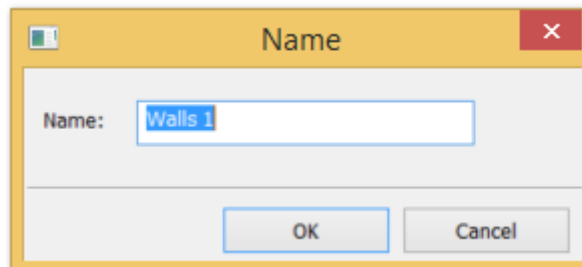
On the Architecture tab select the drop down arrow beneath component and choose Model in place.



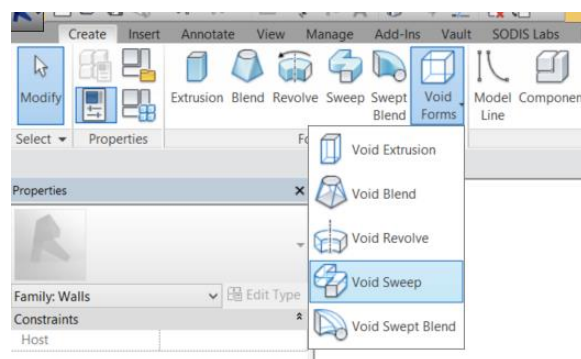
The Family Category and Parameters dialogue appears. Choose walls and select OK



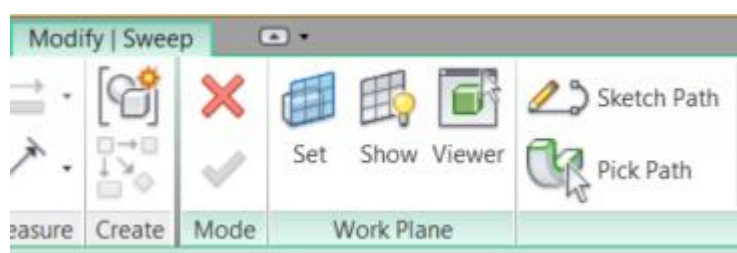
Name the object walls 1 and select OK

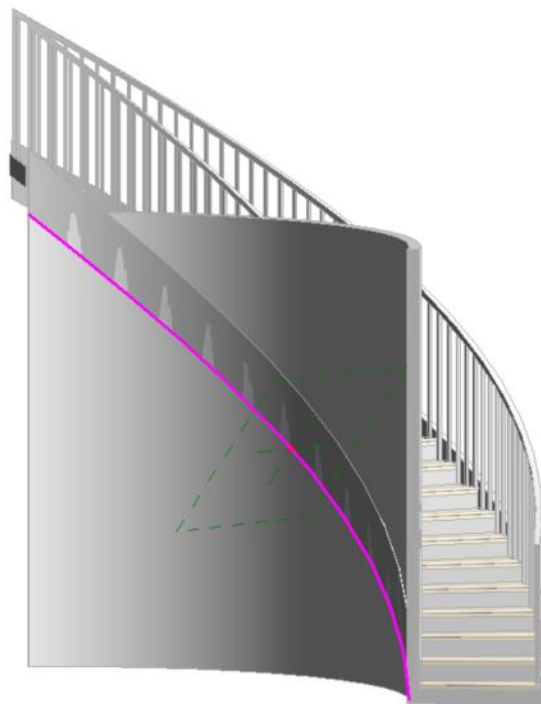
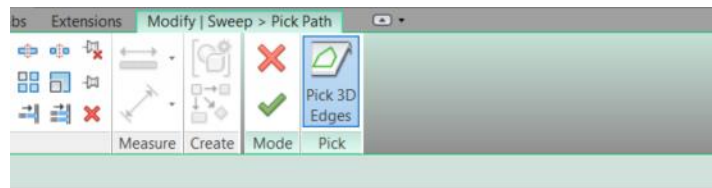


You are now in the modelling environment, so select void forms, then Void sweep from the drop down list

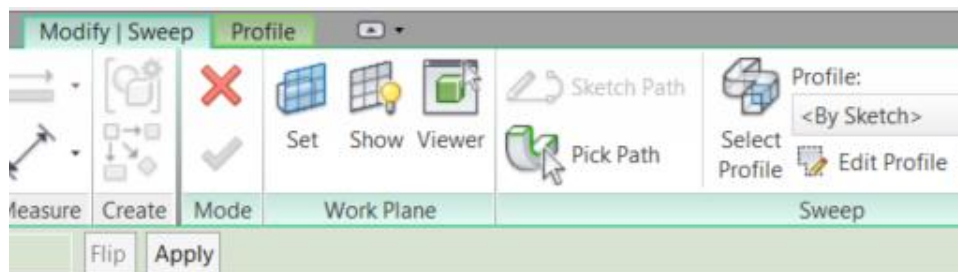


Choose the pick path button and select the underside of the stringer for the 3D path

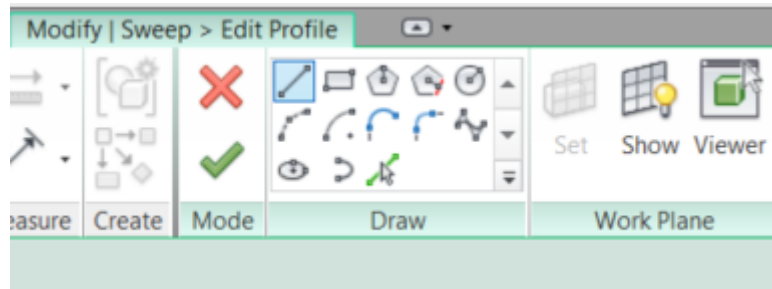




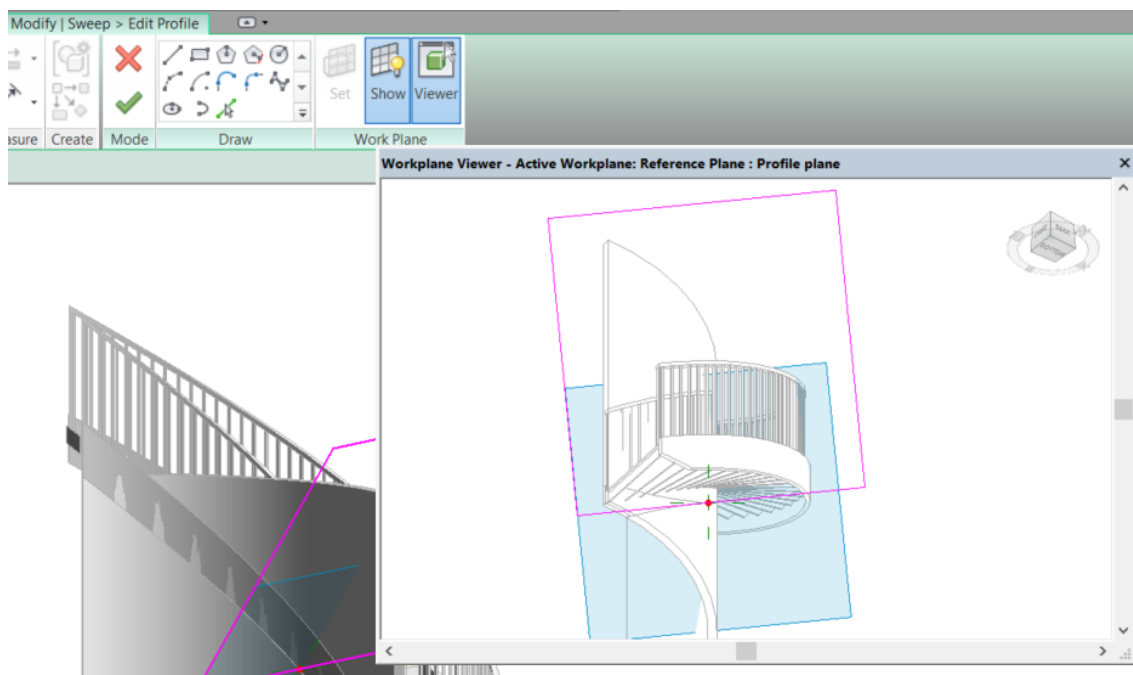
Select the green tick to accept the 3D path. Choose the modify sweep tab. Then pick the edit profile button.



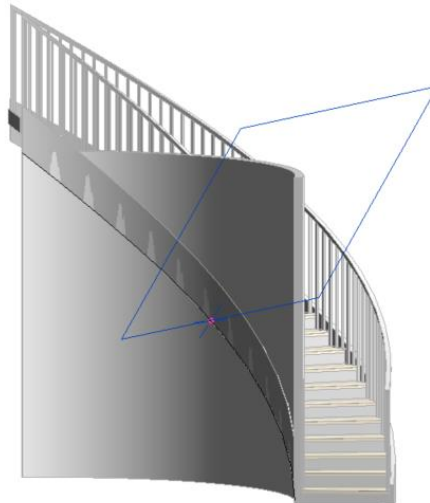
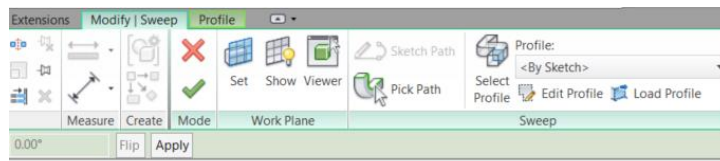
Choose the viewer button, this will make creating the profile a lot simpler.



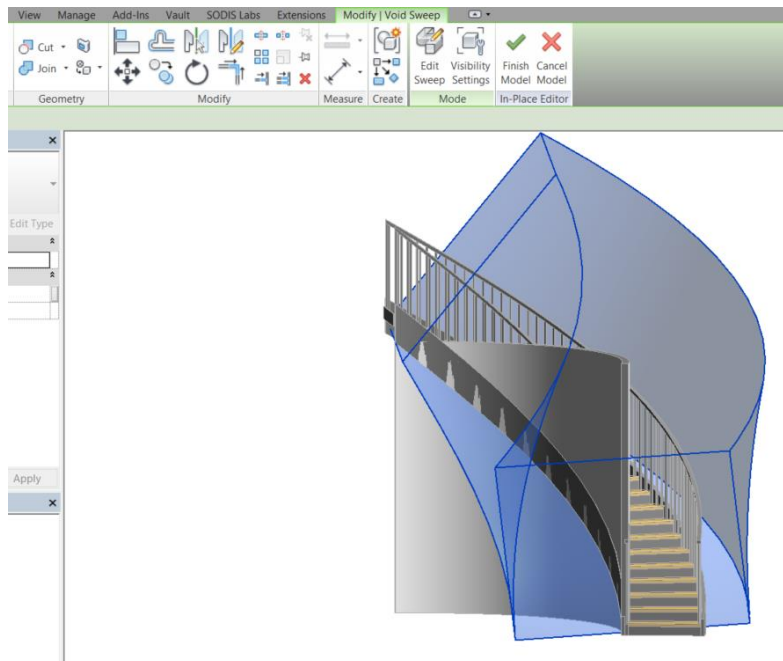
In the viewer draw your profile as shown make sure it is wide and tall enough to cut away the top of the wall. Then select the green tick and close the Viewer.



Select the Modify Sweep tab and pick the green tick



On the ribbon pick the cut tool, then select the wall and then the void.



The wall is trimmed, so select the green tick to complete the process.

