

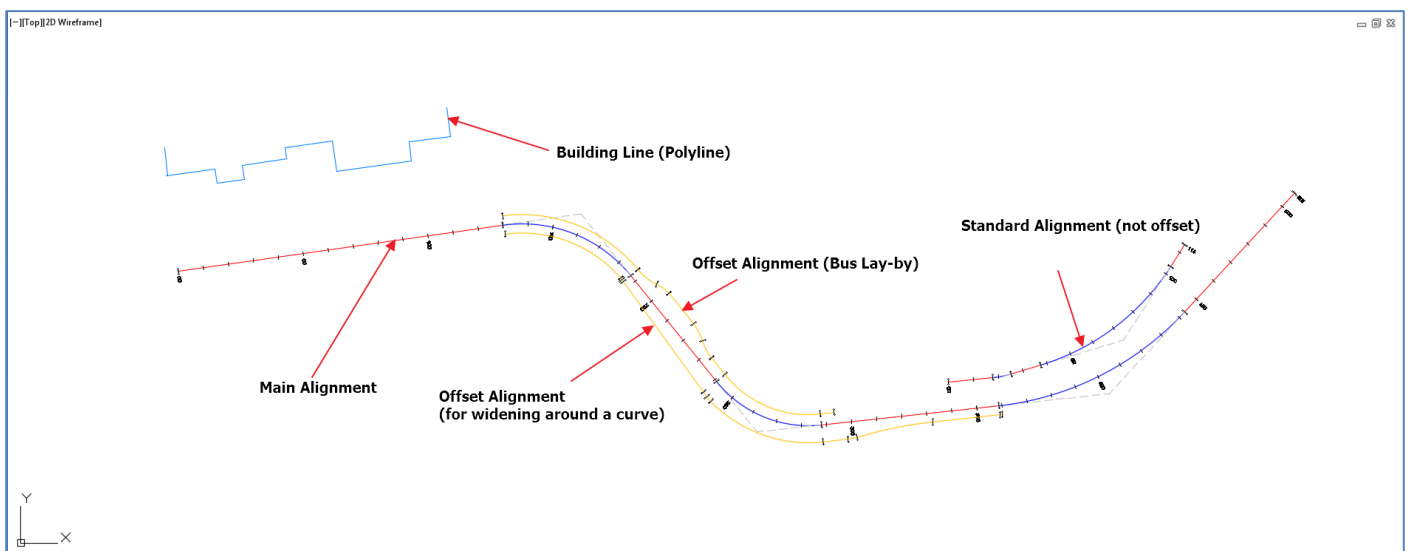
Civil 3D 2016 – Corridor Targeting by Layer

Introduction

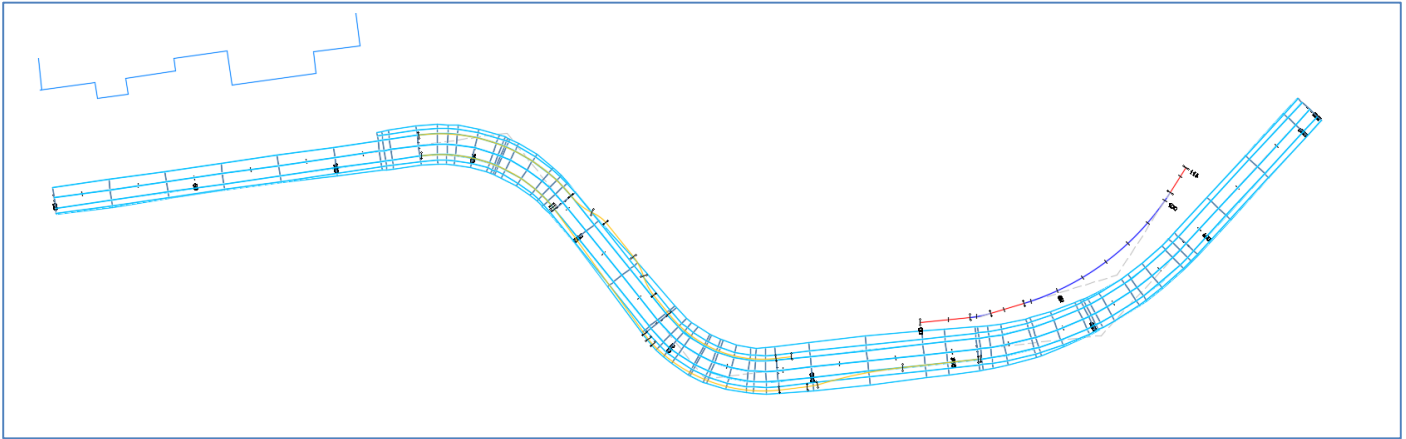
One of the most powerful features when using corridors in Civil 3D is the ability to target parts of the corridor assemblies to Alignments, Feature Lines, Polylines or Survey Figures. In Civil 3D 2016 this feature has been improved to allow targeting to all objects on a chosen layer.

Example

The following example shows a main road alignment and other objects representing, alignments, offset alignments and polylines.

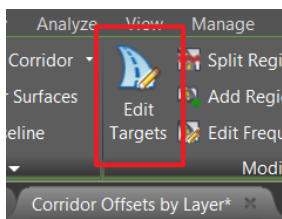


With the corridor displayed the example looks like this:

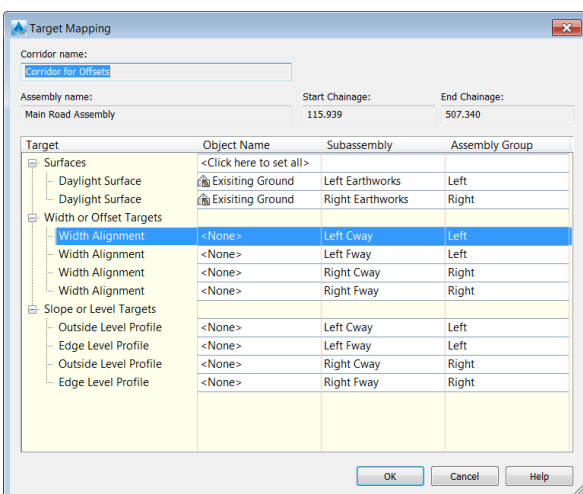


Setting Target Parameters

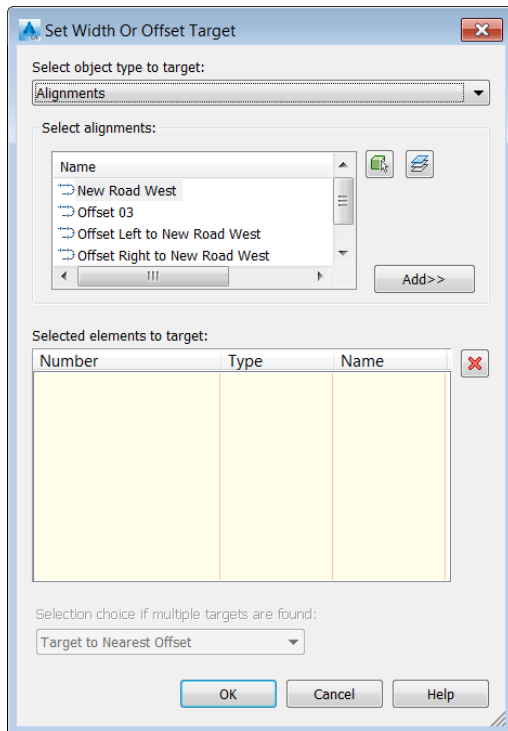
Select the corridor then Edit Targets:



Select the word <None> next to Width Alignment for the Left Cway.

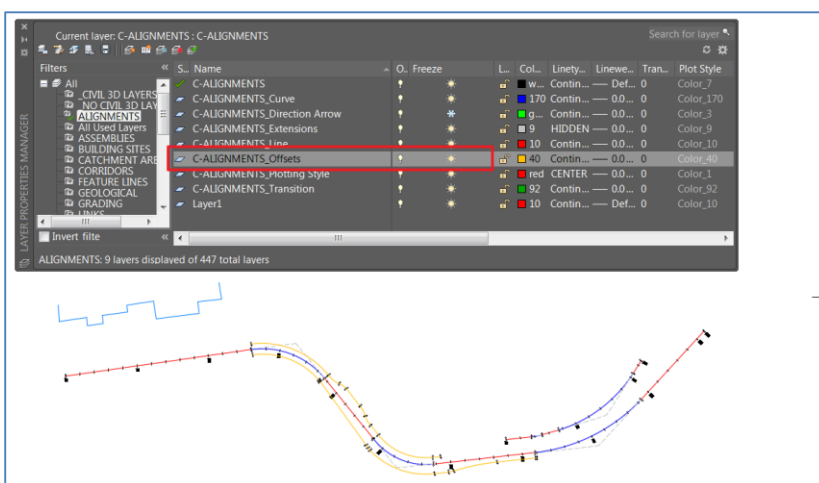


The **Set Width or Offset Target** panel will be displayed

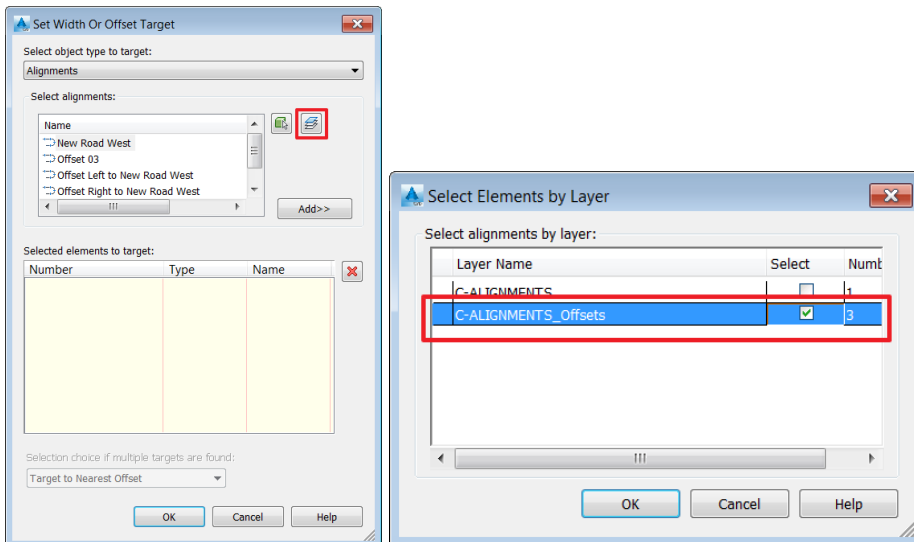


In previous versions of Civil 3D each alignment (or Feature Line, Survey Figure or Polyline) had to be selected and added to the list individually.

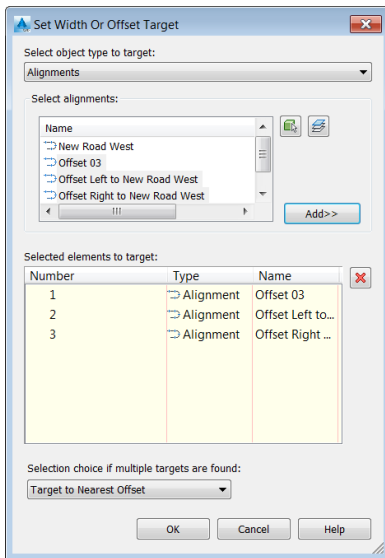
In the above example all the ancillary alignments are stored on the **C-ALIGNMENTS_Offsets** layer.



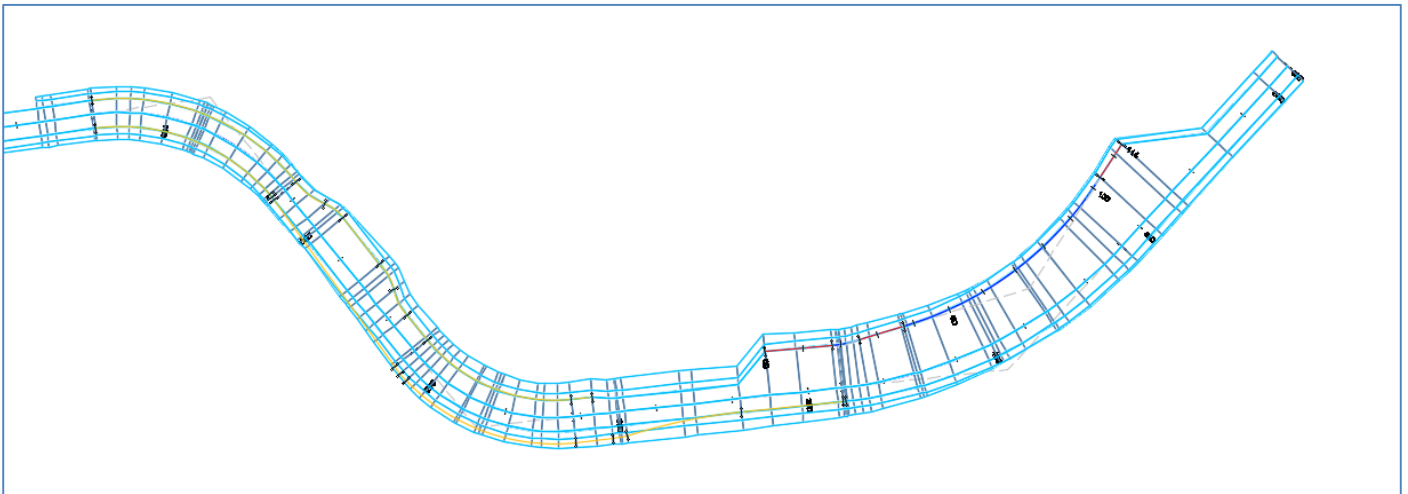
On the **Set Width or Offset Target** panel select the layer 'icon' then the layer containing the alignments:



This will add all the alignments on the selected layer to the target list at once:



This the result:



The building line Polyline towards the left end of the alignment can also be targeted in a similar way by using the following settings:

