

AUTODESK®
NAVISWORKS® MANAGE 2016

AUTODESK®
NAVISWORKS® SIMULATE 2016

Cadline Community

cadline



cadline
community

AUTODESK.

New Features

AUTODESK®
NAVISWORKS® MANAGE 2016

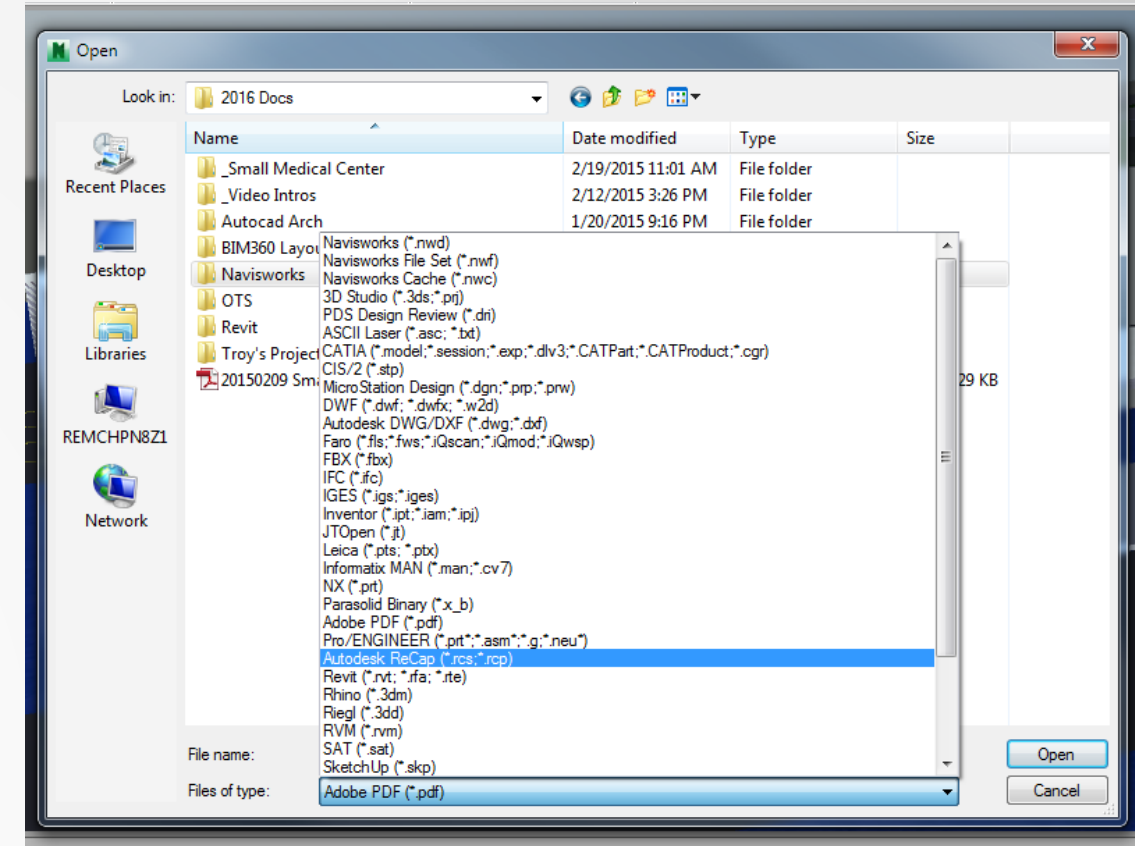
AUTODESK®
NAVISWORKS® SIMULATE 2016

- BIM Coordination with AutoCAD® 2016
- Autodesk 2016 Product Integration
- Third-Party Product Integration
- BIM Coordination with AutoCAD® 2016
- Quantification - Adjust Line Thickness
- Hyperlinks
- Redlines
- Autodesk® BIM 360™ Glue® Integration
- Quantification - 2D Sheet Printing

Autodesk® 2016 Product Integration

Autodesk® Navisworks® 2016

- Autodesk® file readers, exporters and integrations
 - Autodesk® AutoCAD® 2016 - File reader and exporter
 - Autodesk® Vault 2016 – Integration
 - Autodesk® Recap™ 2016 – Integration
 - Autodesk® Revit® 2016 - File reader and exporter, support for new MEP fabrication hangers
 - Autodesk® Inventor® 2016 - File reader, support for ReCap point cloud data
 - Autodesk® 3ds Max® Design 2016 - File exporter
 - Autodesk® Civil 3D® 2016 - File reader and exporter

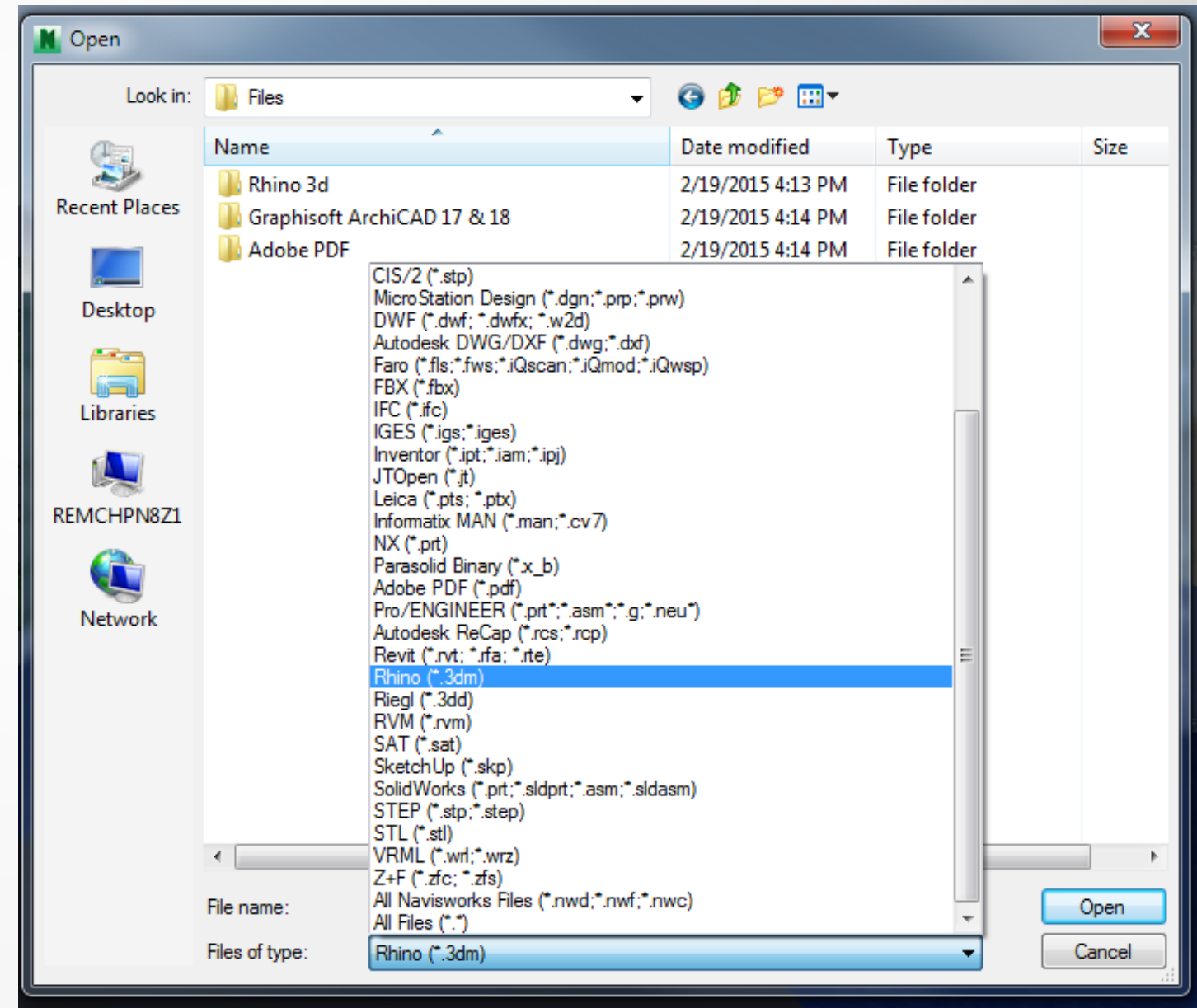


Providing support for these latest Autodesk applications

Third-Party Product Integration

Autodesk® Navisworks® 2016

- Graphisoft® ArchiCAD® 17 & 18
 - File exporters
- Rhino3d®
 - File reader up to Version 5
- Adobe® PDF
 - File reader for 2D only

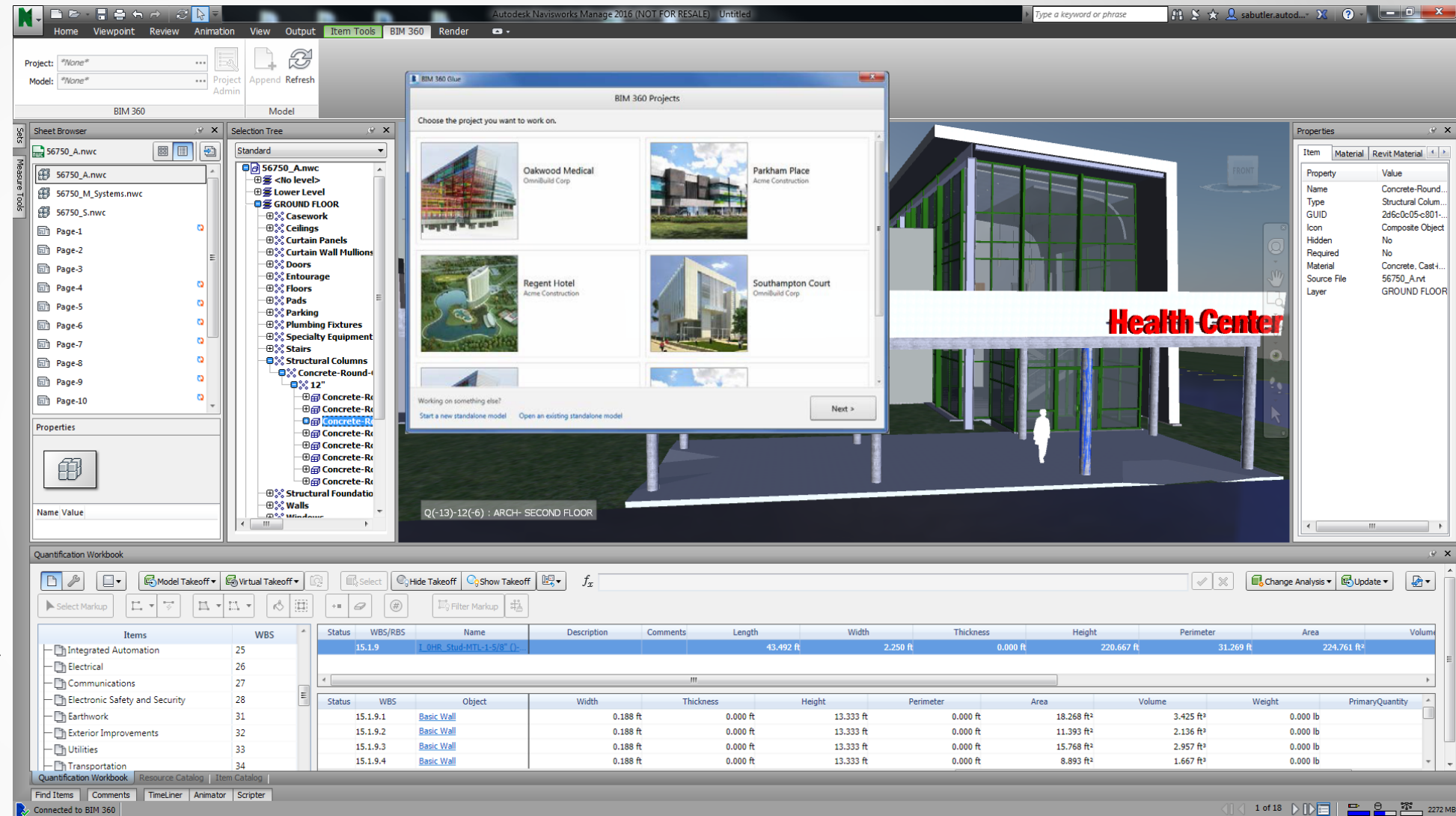


Third party product integration
for better project documentation

BIM 360 Glue Integration

Autodesk® Navisworks® 2016

- Deeper integration between Navisworks and BIM 360 Glue
 - Connect to BIM 360 Glue*
 - Open models, append, and merged models*
 - Save back to BIM 360 Glue*

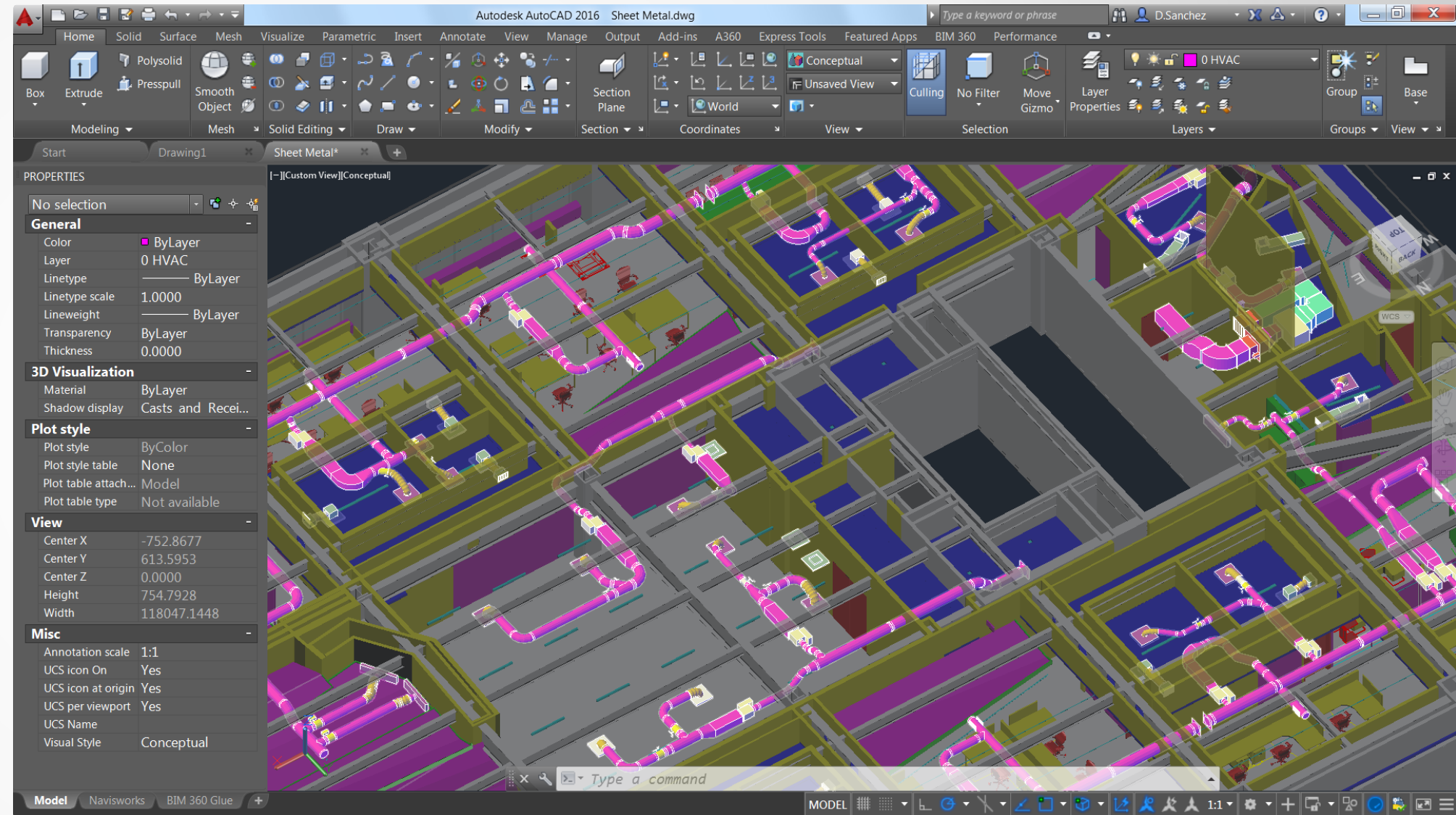


BIM 360 Glue integration for more efficient project communication and collaboration.

BIM Coordination Model in AutoCAD

Autodesk® Navisworks® 2016

- Open Navisworks coordination models
 - Attach Navisworks files

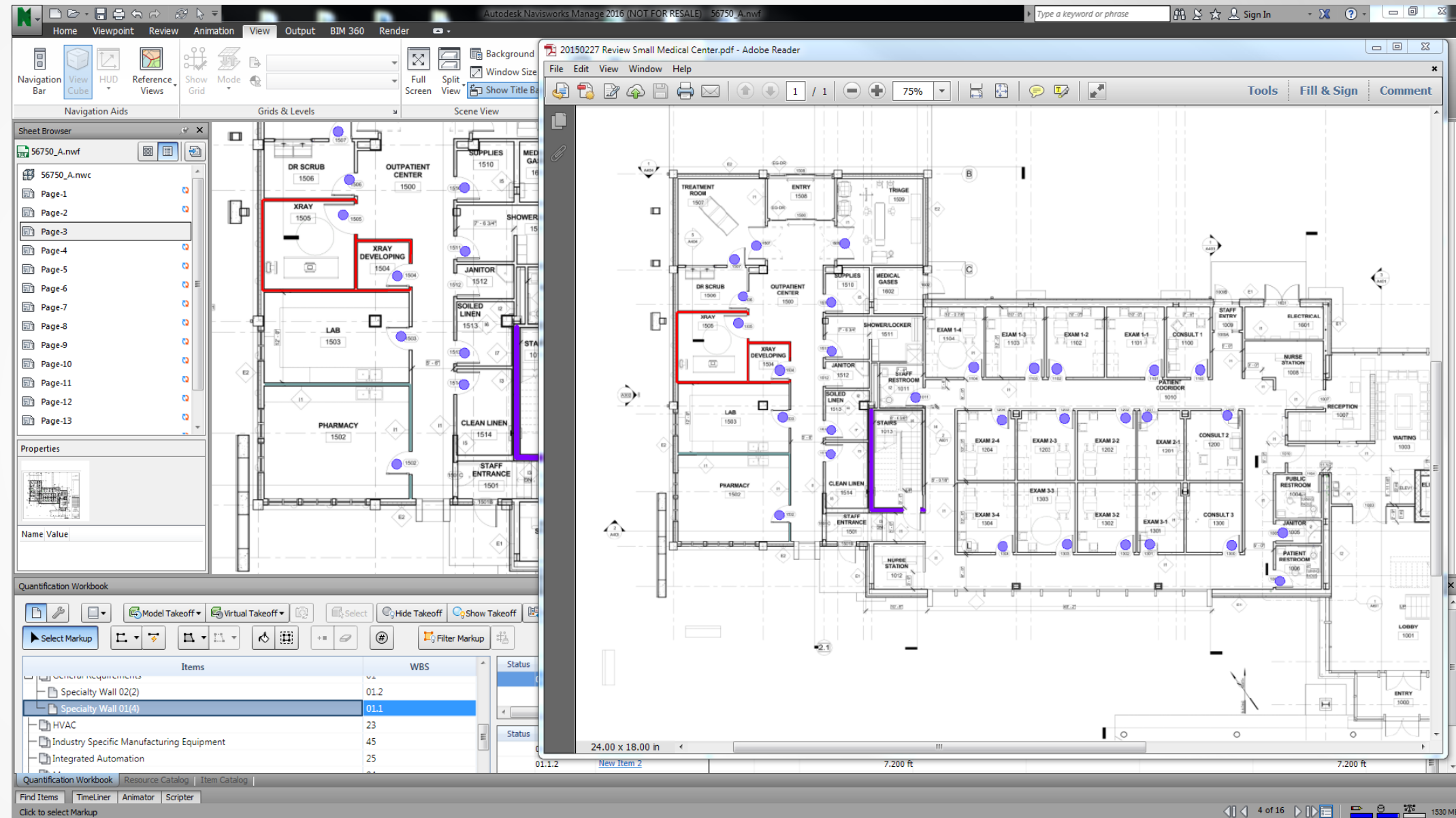


AutoCAD integration for more efficient project communication and collaboration.

Quantification Enhancements

Autodesk® Navisworks® 2016

- 2D Sheet Printing
 - Print Markups

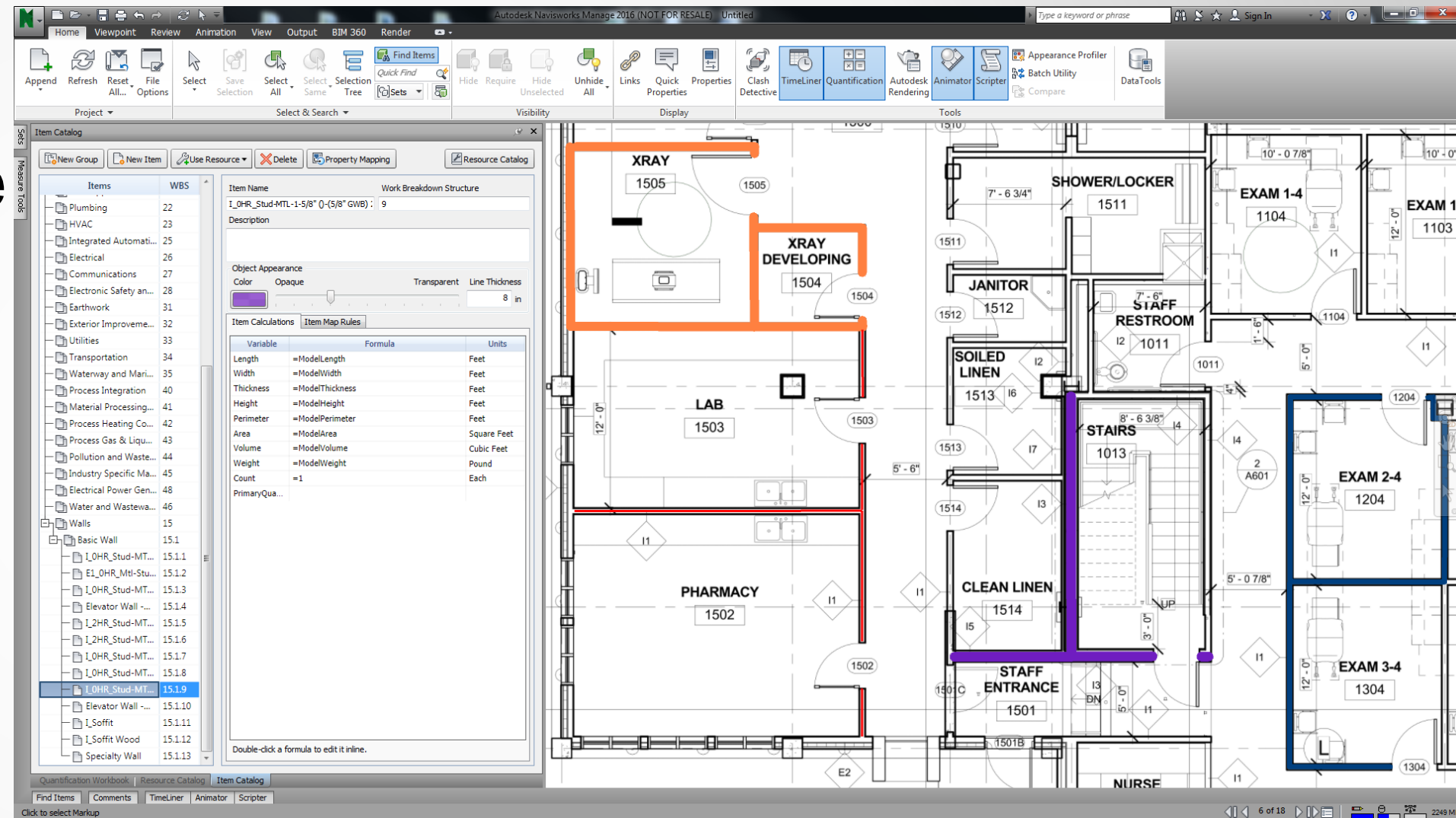


Better control over your documentation

Quantification Enhancements

Autodesk® Navisworks® 2016

- Adjust Line Thickness
 - Manage the appearance of 2D takeoffs



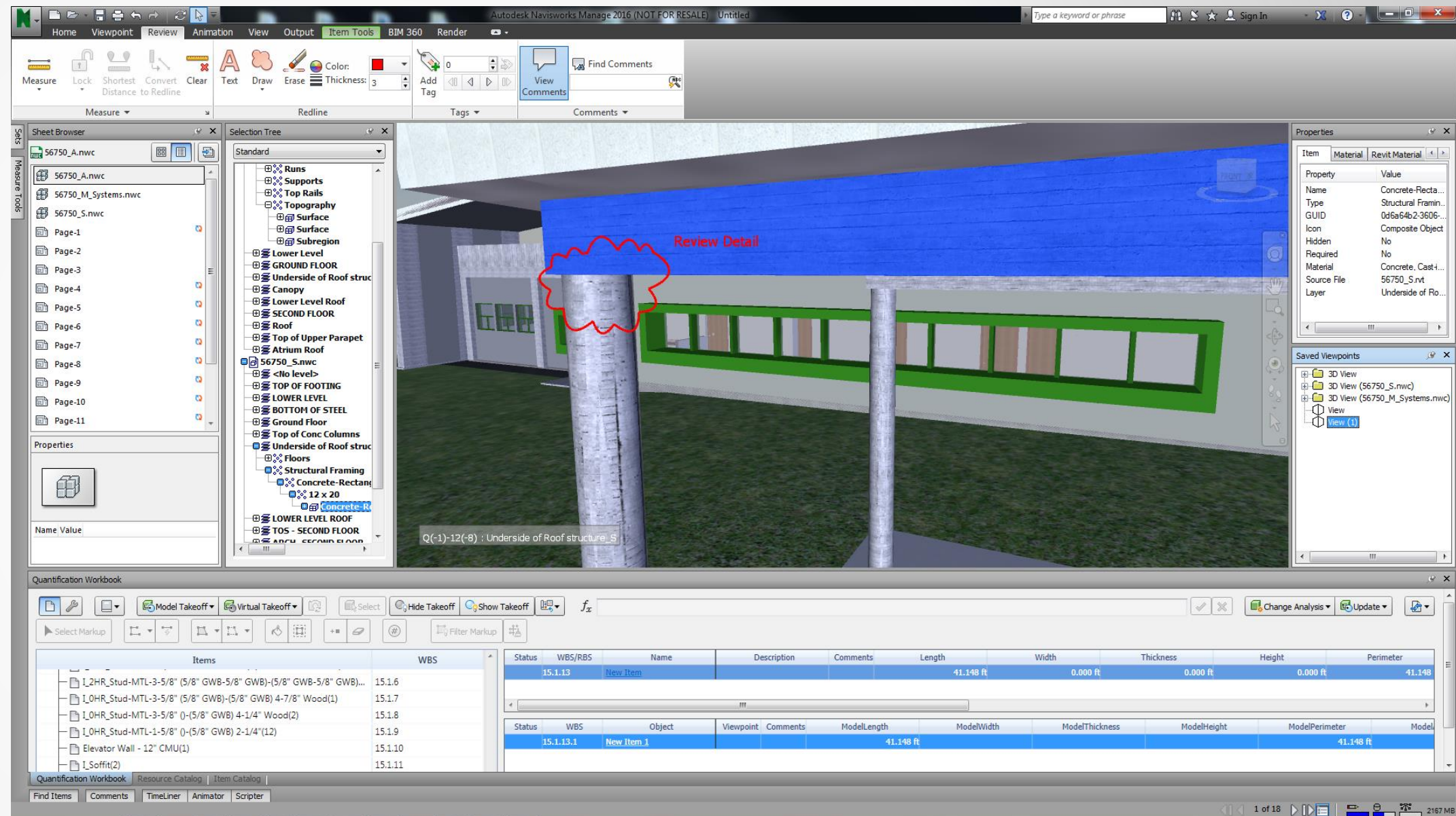
Achieve greater clarity on a complex sheet and clearer documentation

Productivity Improvements

Autodesk® Navisworks® 2016

■ Redlines

- Viewpoints are automatically saved

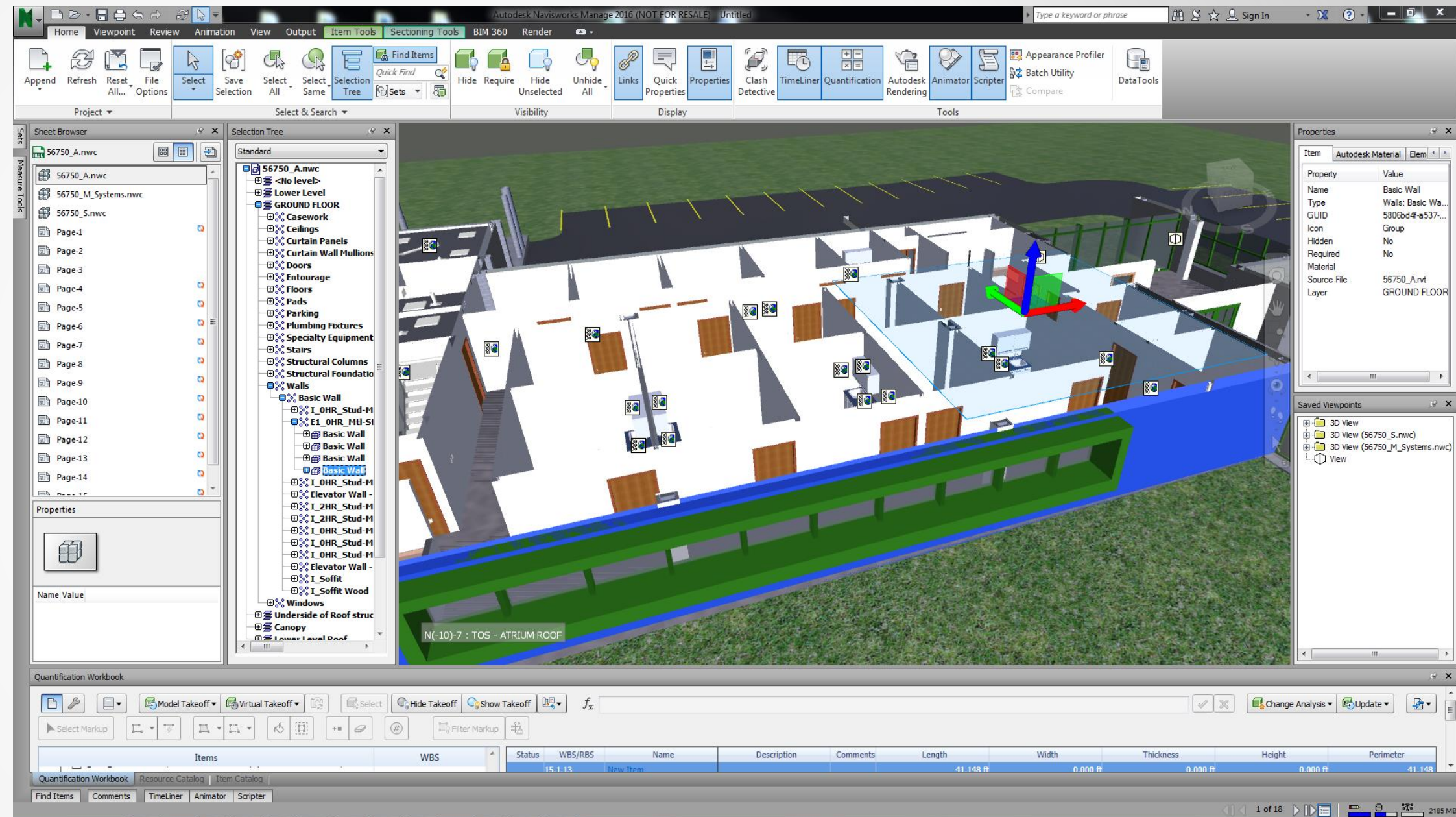


Improvements for a more efficient workflow

Productivity Improvements

Autodesk® Navisworks® 2016

- Hyperlinks
 - Hidden from view



Improvements for better documentation.



Autodesk is a registered trademark of Autodesk, Inc., and/or its subsidiaries and/or affiliates in the USA and/or other countries. All other brand names, product names, or trademarks belong to their respective holders. Autodesk reserves the right to alter product and services offerings, and specifications and pricing at any time without notice, and is not responsible for typographical or graphical errors that may appear in this document.

© 2015 Autodesk, Inc. All rights reserved.