

# Interfacing with a Terminal Design Software

## AutoCAD Electrical

AutoCAD Electrical has always had the ability to interface with products like Weidmuller's RailDesigner, Wago's Smart Designer and Phoenix Contact's Clip software to name a few through Excel, CSV or ASCII delimited information. However in the latest release of AutoCAD Electrical (2015), the interface between the latter two products has been vastly improved with a direct integration.

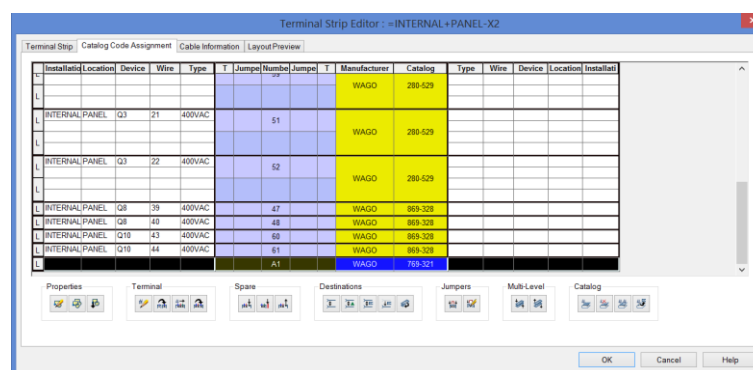
These applications aid the user in selecting the correct accessories and provide an almost photographic representation of the terminal rail to be created. You can export terminal strips from AutoCAD Electrical and then import them to Wago or Phoenix Contact applications to design, manipulate, and validate the terminal strips.

During export, AutoCAD Electrical extracts the terminal data from the selected terminal strips and outputs to an XML file compatible with Wago or Phoenix Contact. You then import the XML file to the manufacturer software.

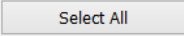
The terminal strip data includes catalog numbers, terminal numbers, installation code, location code, tag, spares, and accessories

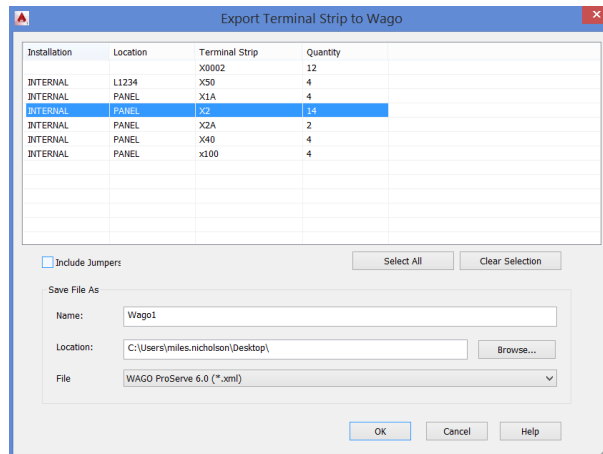
In this month's tips and tricks, we will explain the procedure for interfacing with Wago's Smart Designer.

In AutoCAD Electrical Terminal Editor, Wago parts have been assigned and some accessories have been added.



Select the *Import/Export Data* ribbon tab > *Export* panel >

Highlight the terminal strip, or , you wish to export into Wago's Smart Designer



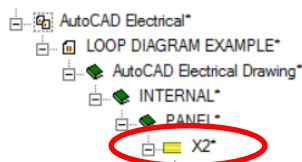
Choose the location of the export and then select 

Start your Wago Smart Designer software

Select the *Import/Export* dropdown > *Import XML data from CAE*

Browse to the XML file that AutoCAD Electrical created and select 

The AutoCAD Electrical data will be shown on the side panel



Highlighting the terminal strip in the side panel will build the terminal strip from the data

