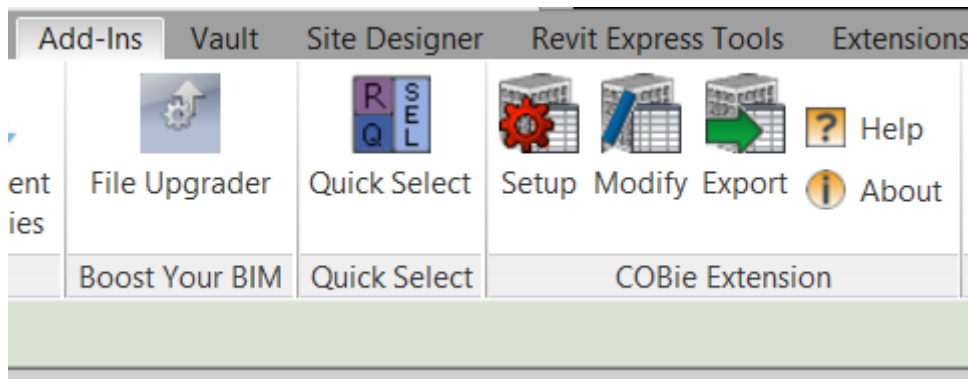
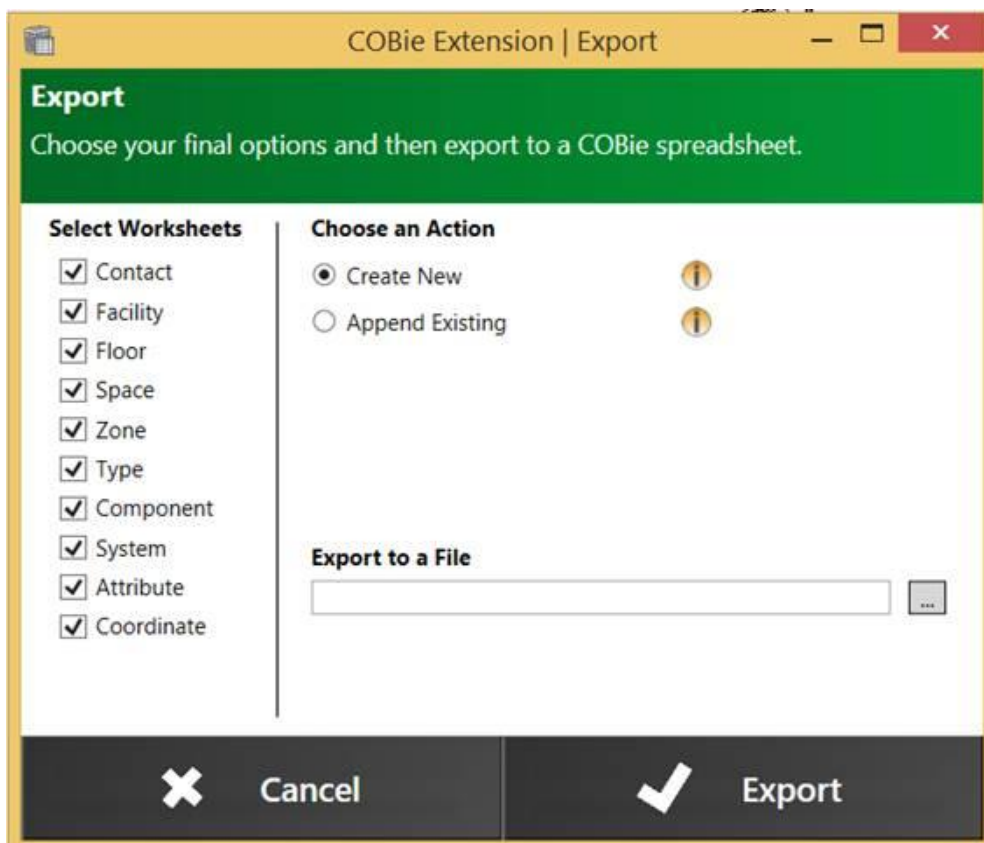


# Revit 2015 COBie Toolkit Exporting to a Spreadsheet

The last part of the process is exporting the information to a COBie spreadsheet.



Select the Export button in the COBie Extension panel the following dialogue box appears.



In this dialogue box you can specify which worksheets are created in the spreadsheet and choose the file name and location.

The created COBie spreadsheet is shown below

Assembly-AssemblyType	Category-Connection	Category-Coordinate	Category-Document	Category-Element	
Excluded	Control	Point	Certificates	21-01 00 00 Substructure	11-11 00 00 Assembly Facility
Fixed	Flow	Line-end-one	Client Requirements	21-01 10 Foundations	11-11 11 00 Convention and Exhibition Facility
Included	Return	Line-end-two	Closeout Submittals	21-01 10 10 Standard Foundations	11-11 11 11 Convention Center
Layer	Supply	Box-lowerleft	Contract Drawings	21-01 10 10 10 Wall Foundations	11-11 11 17 Conference Facility
Mix	Structural	Box-upperright	Contract Drawings	21-01 10 10 30 Column Foundations	11-11 14 00 Meeting Facility
Optional			Contract Modifications	21-01 10 10 90 Standard Foundation Supplementary Components	11-11 14 11 Club or Organization Building
			Contract Specifications	21-01 10 20 Special Foundations	11-11 14 14 Ceremonial Hall
			Design Data	21-01 10 20 10 Driven Piles	11-11 21 00 Entertainment Assembly Facility
			Design Review Comment	21-01 10 20 15 Bored Piles	11-11 21 11 Cinema
			Manufacturer Field Report	21-01 10 20 20 Caissons	11-11 21 17 Performing Arts Facility
			Manufacturer Instructions	21-01 10 20 30 Special Foundation Walls	11-11 21 17 11 Auditorium and Theater Facility
			Operation and Maintenance	21-01 10 20 40 Foundation Anchors	11-11 21 17 14 Outdoor Theater
			Preconstruction Submittals	21-01 10 20 50 Underpinning	11-11 21 21 Casino
			Product Data	21-01 10 20 60 Raft Foundations	11-11 21 22 Theme Park
			Punch List Items	21-01 10 20 70 Pile Caps	11-11 21 23 Fair or Circus Ground
			Request for Information	21-01 10 20 80 Grade Beams	11-11 21 24 Race Track
			Requests for Information	21-01 20 Subgrade Enclosures	11-11 21 24 11 Horse Racing Track
			Samples	21-01 20 10 Walls for Subgrade Enclosures	11-11 21 24 14 Dog Racing Track
			Shop Drawings	21-01 20 10 10 Subgrade Enclosure Wall Construction	11-11 21 24 17 Automobile Racing Track
			Specifications	21-01 20 10 20 Subgrade Enclosure Wall Interior Skin	11-11 21 27 Arena
			Test Reports	21-01 20 10 90 Subgrade Enclosure Wall Supplementary Components	11-12 00 00 Education Facility
				21-01 40 Slabs-On-Grade	11-12 11 00 Daycare or Preschool Facility
				21-01 40 10 Standard Slabs-on-Grade	11-12 11 11 Daycare Facility
				21-01 40 20 Structural Slabs-on-Grade	11-12 11 14 Preschool Facility
				21-01 40 30 Slab Trenches	11-12 21 00 K through 12 Learning Facility
				21-01 40 40 Pits and Bases	11-12 21 11 Kindergarten

Please note that, the process would only create a spreadsheet if in the setup dialogue box, on the Coordinates page the Bounding Box options are chosen.

