

# Changing the dimensional units in Revit

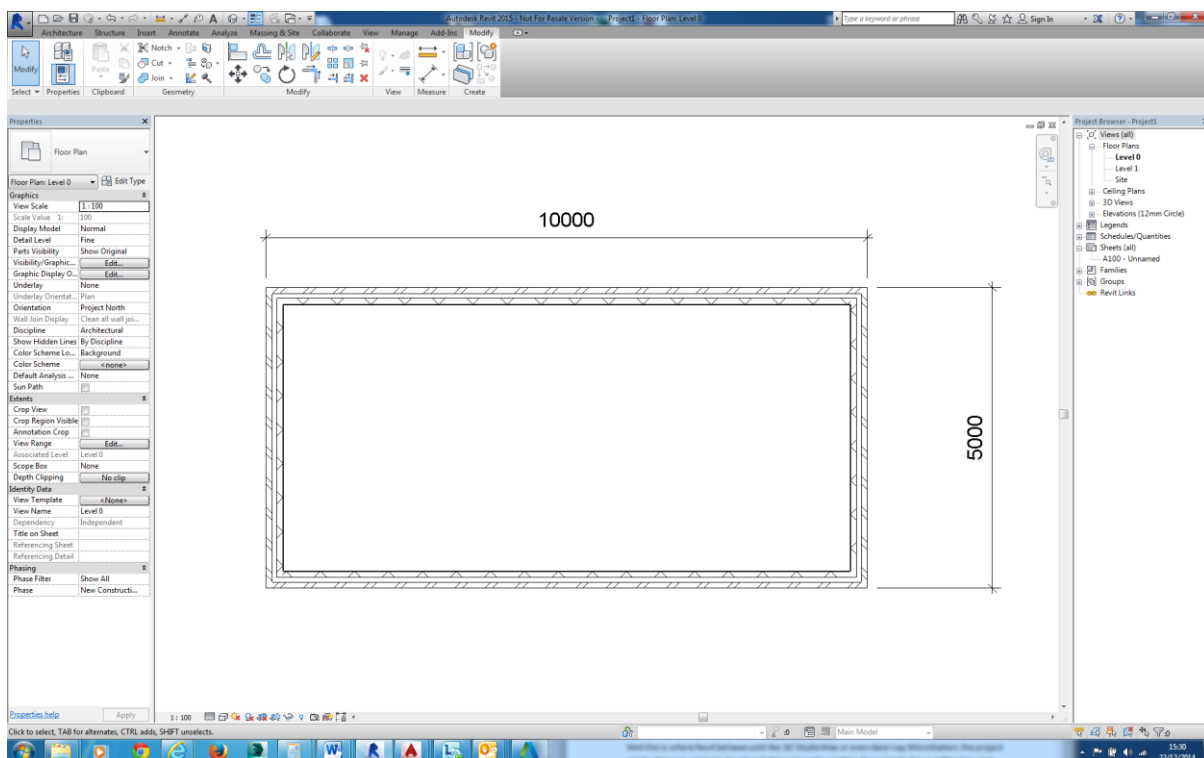
Firstly, Happy New Year to all our readers, hope you find the information below useful.

This blog related to a question asked in a training Revit course last year, regarding dimensions and dimension units, which was is it possible to draw in one type of unit i.e. millimetres but dimension in a different one i.e. feet and inches?

Well I suppose this is where Revit behaves a bit like 3D Studio Max or even dare I say MicroStation; the project can therefore be drawn in one type of unit and dimensioned in another, for example drawn millimetres, but dimensioned in feet and inches.

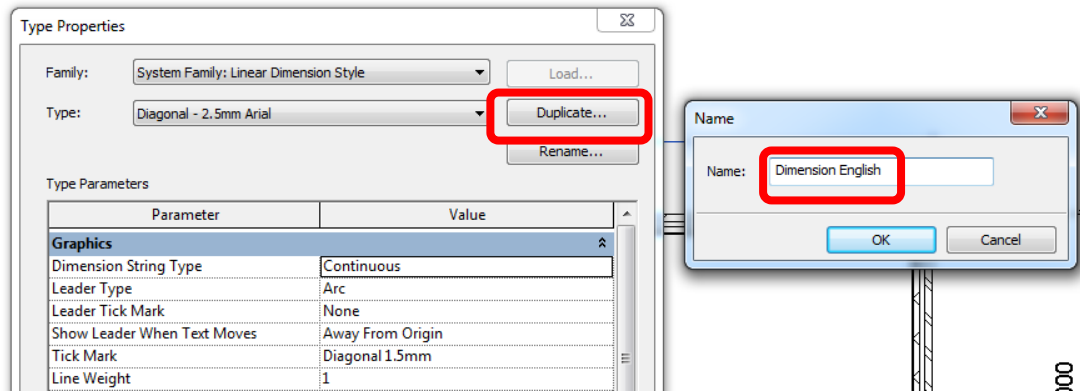
The drawn units will depend on the template used, we tend to draw in millimetres in the UK, and so the metric template is used by default.

Below is a simple example comprising of four walls, with external dimensions of 10m x 5m.



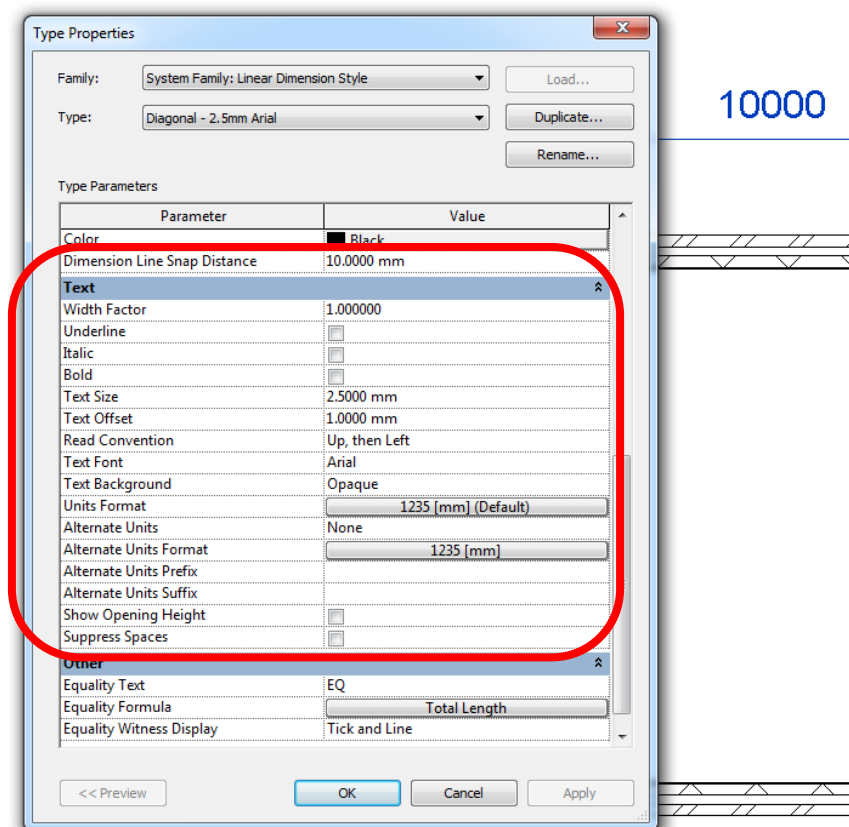
The best option may be to create a new Revit dimension family, so the origin dimension family is not affected by any changes made.

To create a new dimension family select a dimension, in the “Properties” dialogue box select “Edit Type”, the “Type Properties” dialogue box is now displayed, select “Duplicate” give the newly created dimension style a suitable name.

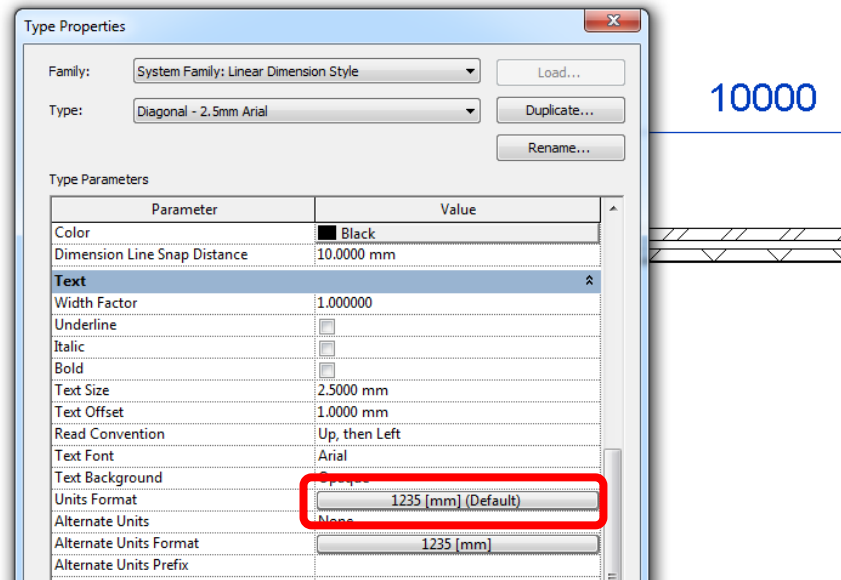


Select the “OK” button to confirm the new dimension family.

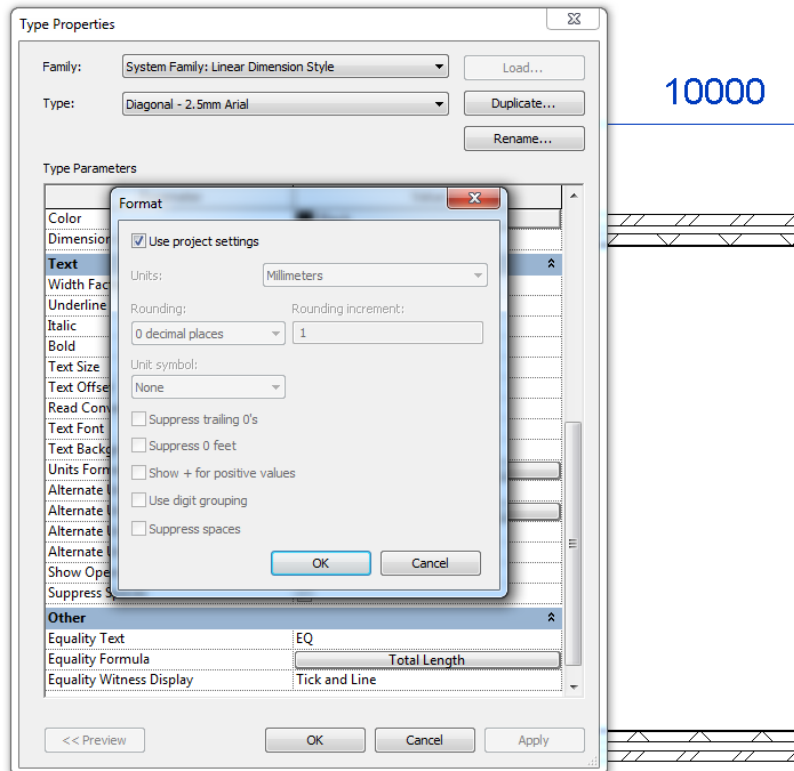
Scroll down to the “Text” roll out section.



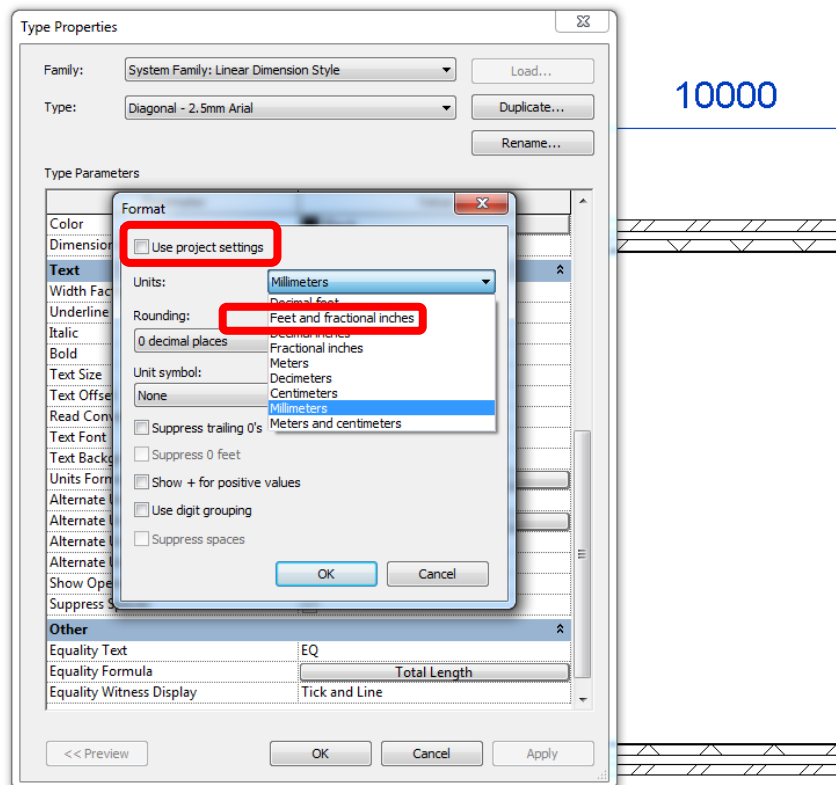
In the "Value" column select "Units Format" bar displaying the current units set up.



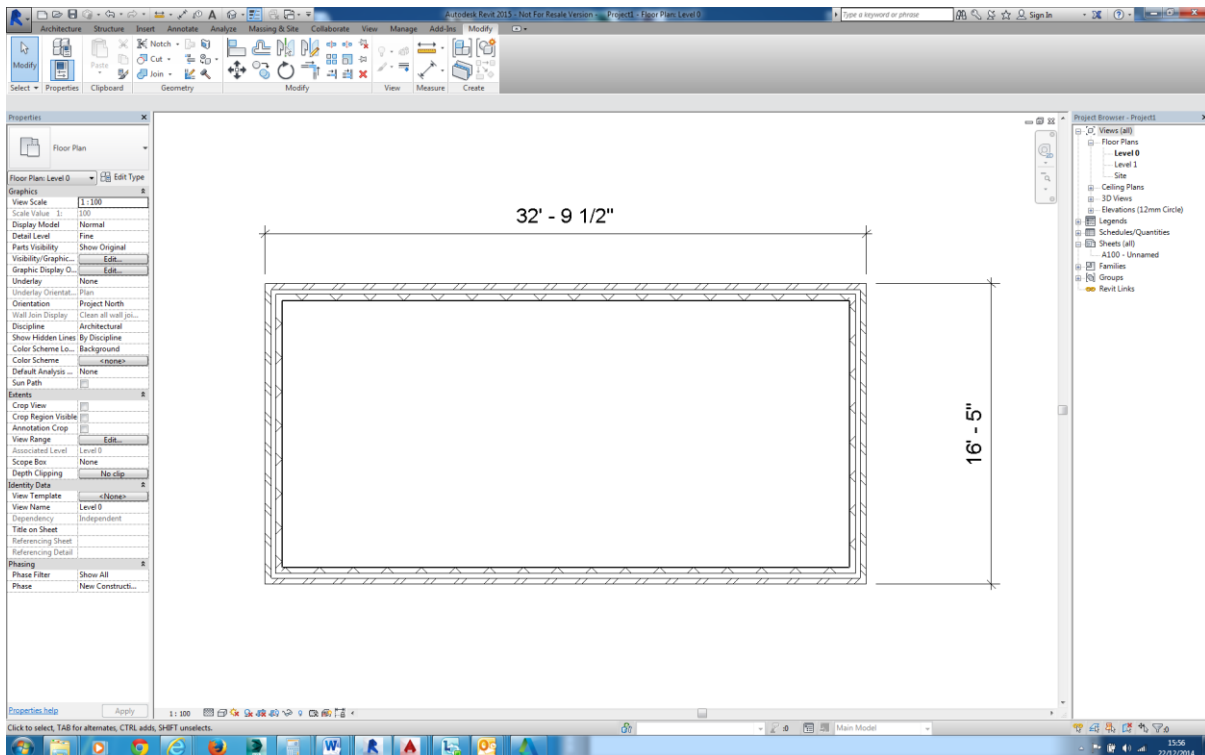
The units "Format" dialogue is now displayed.



Remove the tick in the “Use Project Settings” check box this will now allow the selection of dimension units from the drop down list just below it.



“OK” the “Format” dialogue box, “OK” the “Type Properties” dialogue box, dimensions of the newly created dimension family now display “Feet and Inch” values instead of millimetres.



Since the project units are in millimetres all modifications are still carried out in millimetres.