

Migrating Custom Vault Libraries

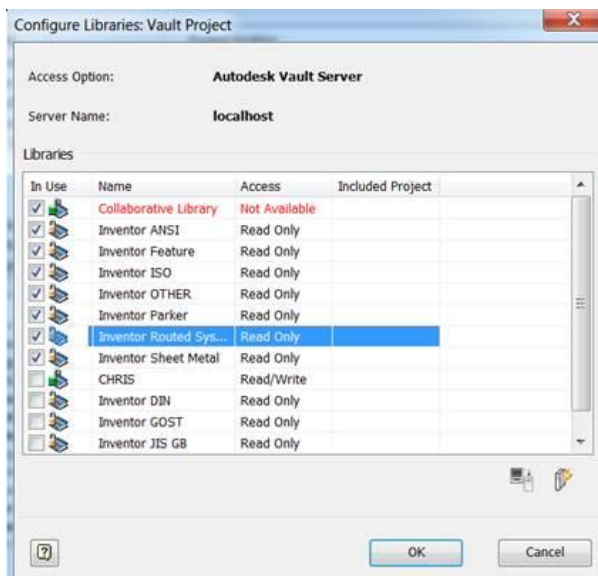
When upgrading Vault, you may need to migrate your Custom Library Content. Here is how you can do this.

Advanced Autodesk Vault Administration Users.

When upgrading from an older version of Autodesk Vault, you will need to migrate your **Custom Content Libraries** to be able to use them in the new version.

Here is an example of migrating a 2012 Vault Custom Library called 'Collaborative Library' to Vault 2013.

After restoring your Vault backup and migrating it all to 2013 you will see that although you have the library listed in ADMS and migrated, the 2013 Inventor Project file lists it in RED and you can't use it.



If you have this, read on....

Tip: Make sure you have migrated all your Inventor Design Data and Style libraries FIRST before you proceed with this. Refer to white paper

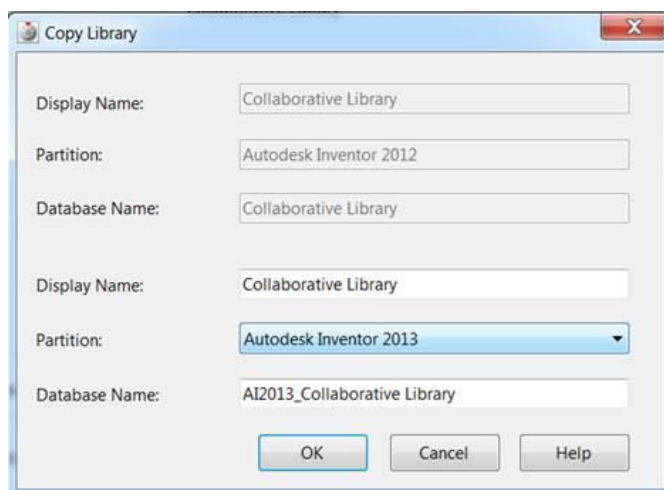
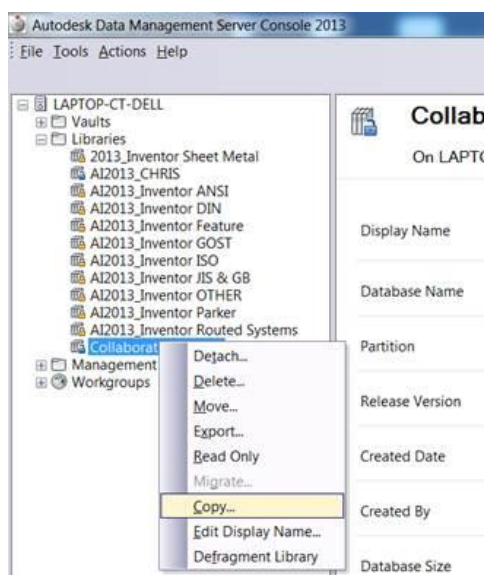
<http://www.cadlinecommunity.co.uk/WhitePapers/WhitePaper.aspx?Scold=abb5cecd-36a0-4d5a-882e-1e91190af87a&returnTo=%2fSearch%2fDefault.aspx&returnTitle=Search+CADline+Community>

Firstly, although ADMS 2013 has effectively migrated the Library for use, what it hasn't done is make it available to the 2013 Library Partition. It will still be only available in the 2012 Partition. Part of the benefit to having these partitions is so that people who have a mixed environment of say 2012 and 2013 Inventor users, then each version can utilise its own version of the library.

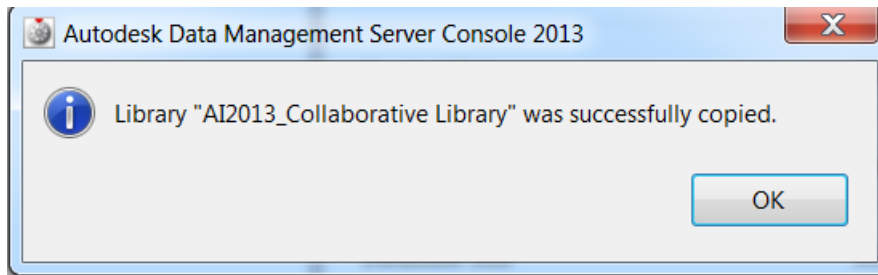
So what we need to do is COPY the library to the 2013 Partition.

Run ADMS Console

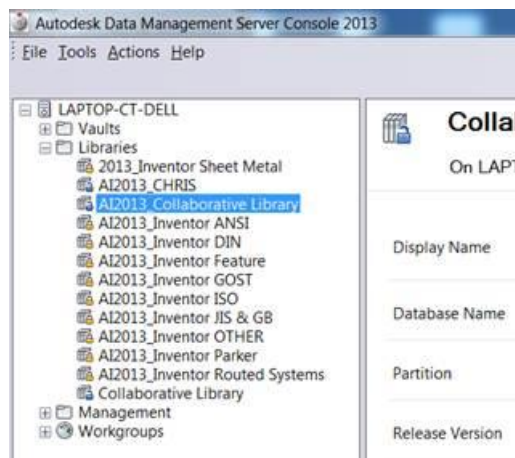
In the ADMS Console window, expand Libraries, and right-click the library to COPY.



Click OK

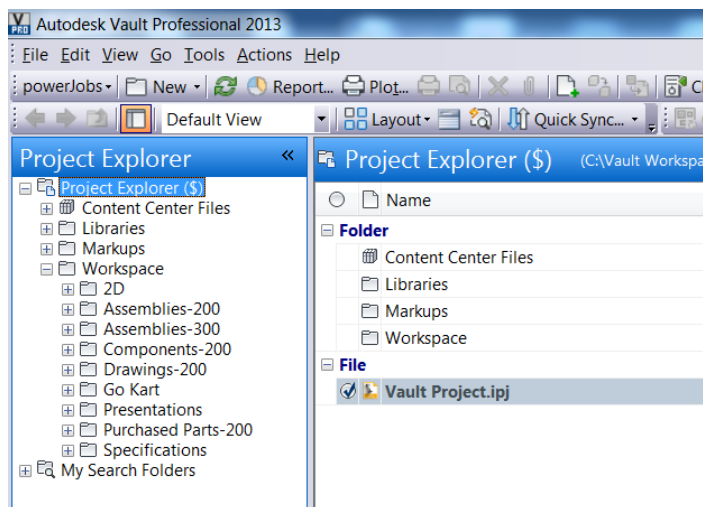


You now have the old 2012 Database and the new 2013 one.



If you are not going to have 2012 users logging into the 2013 Vault, you may as well DELETE the old Collaborative Library.

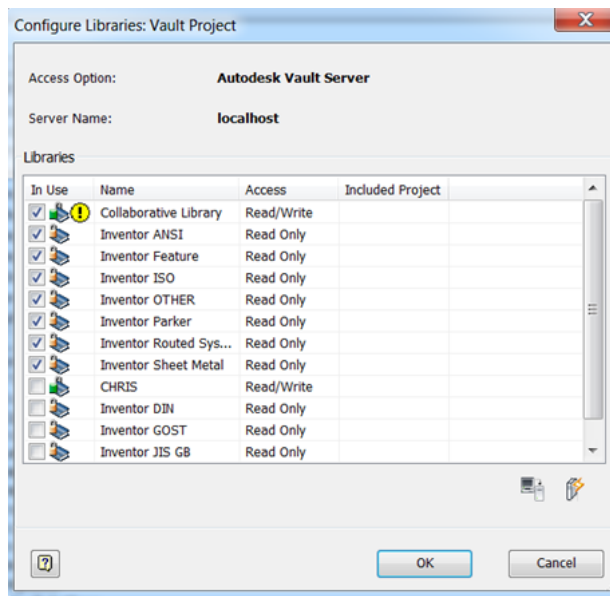
You are going to make a change to the vaulted **Inventor Project File**, so login to Vault Client as an **administrator** and CHECK OUT the IPJ file to yourself.



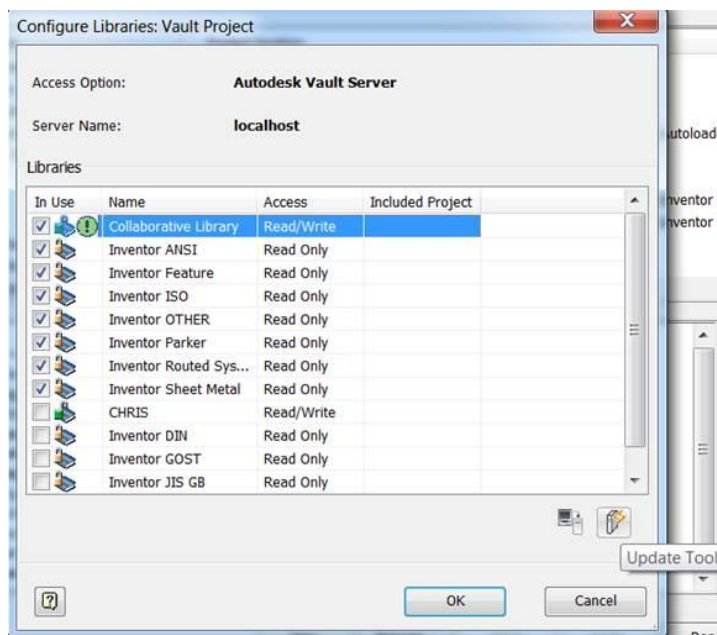
Now Fire up Inventor and Login to the Vault as an administrator.

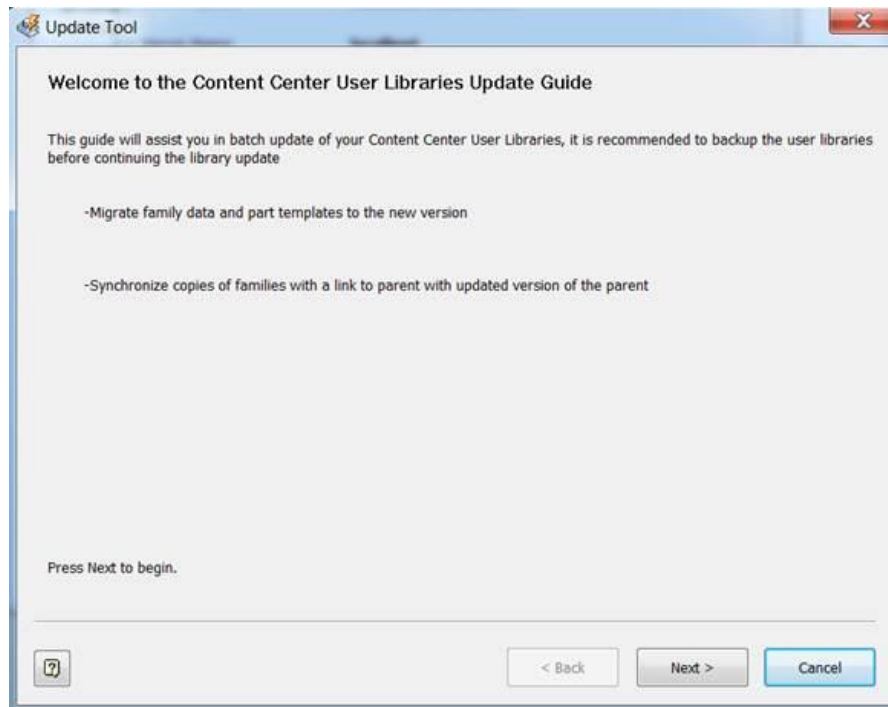
Open the Projects and activate your vault Project.

Go to the Configure Content Centre Libraries and you will see the following



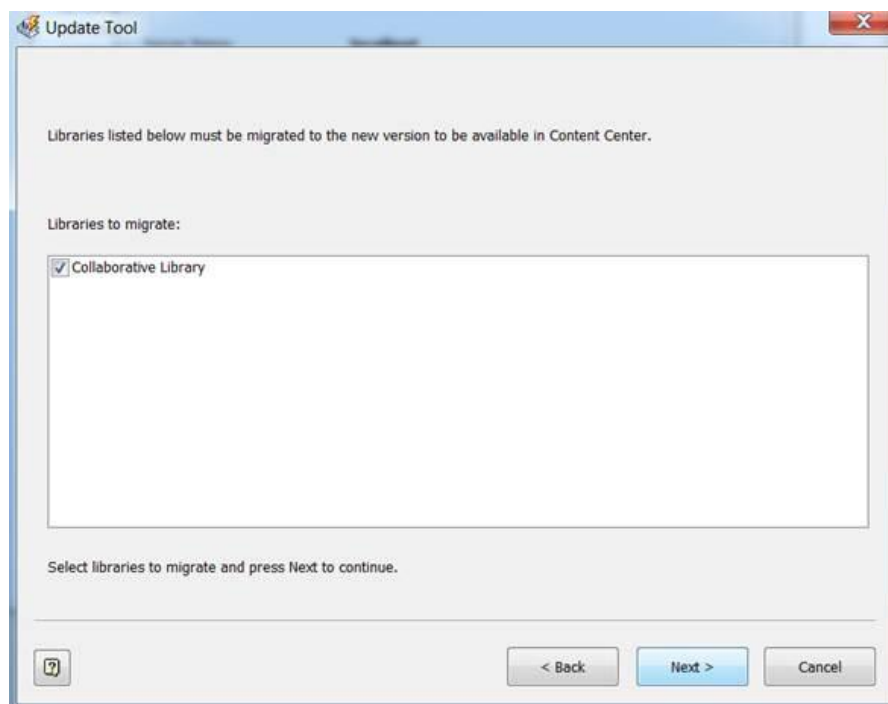
The next step requires you to 'update' the library. Make sure the Library is 'ticked' and selected. Pick the **UPDATE TOOL** icon in the lower right of the dialog box to start the Wizard.





Run through the Wizard and click NEXT.

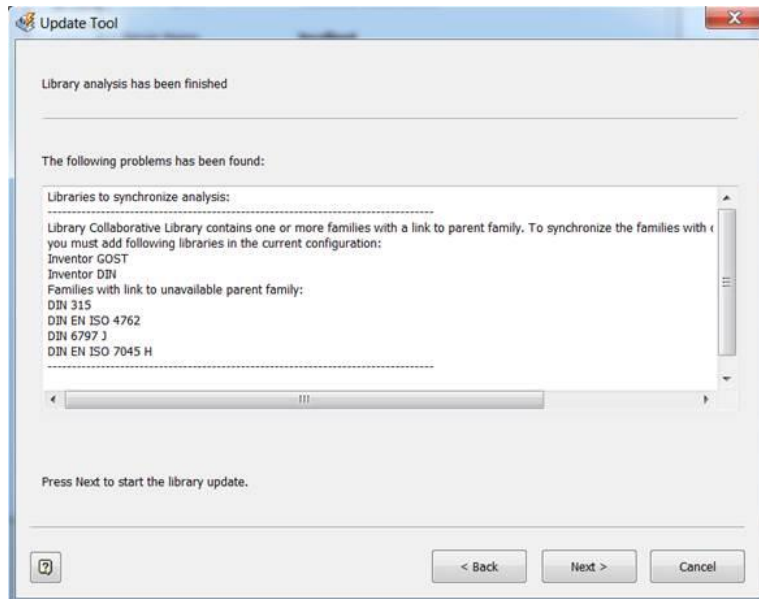
Your custom Library will be listed there.



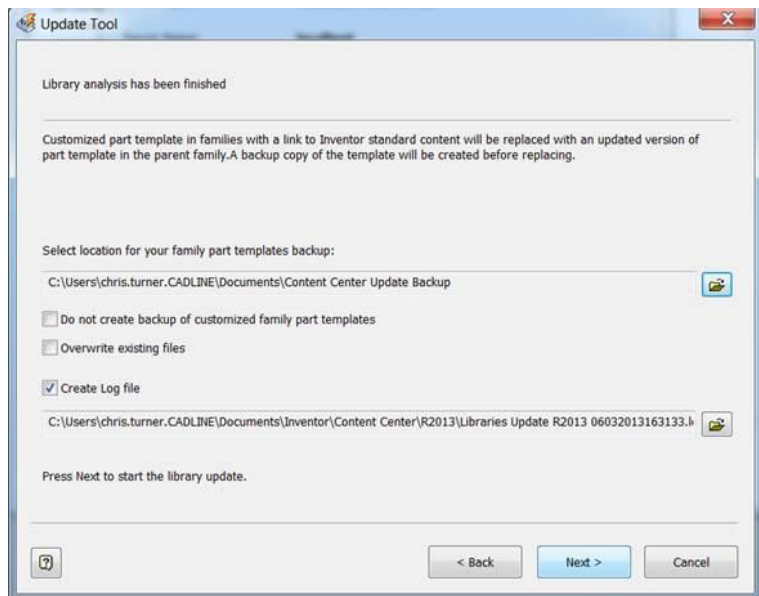
Click NEXT x 2.

Proceed through clicking NEXT.

If you get this message below or similar, then you probably have Custom Content families linked to the original default Inventor libraries. What you will need to do is cancel this and go back to ADMS. Make sure you have listed all the needed Inventor Content Centre libraries. If not you will need to add them. Also check that you have them selected as active in the Inventor project file.

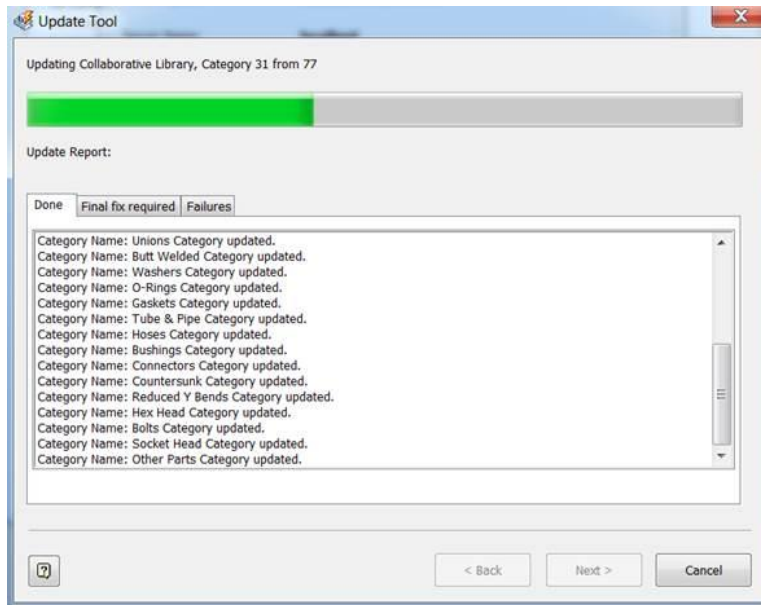


Click NEXT



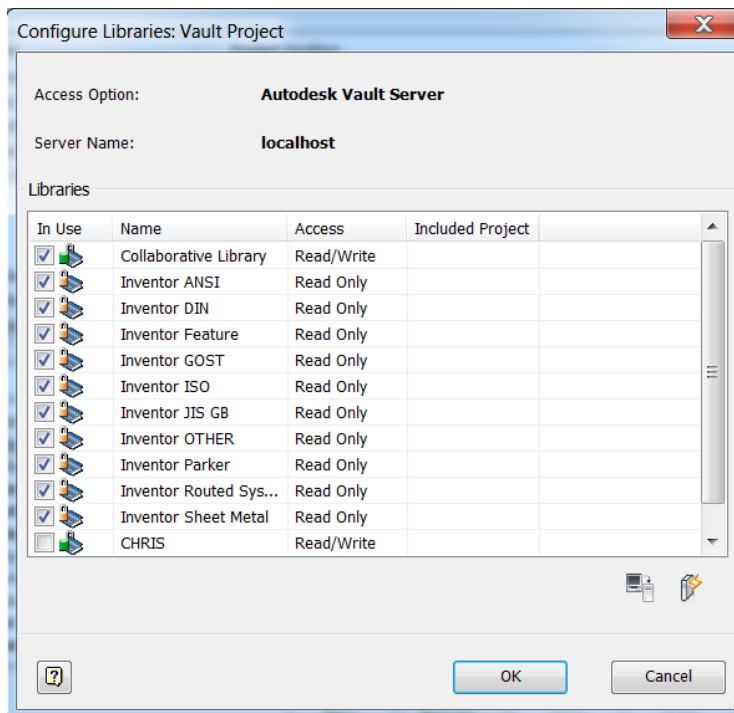
Click NEXT

The Migration will start



Once done, check the **'Final Fix Required'** and **'Failures'** tabs. Make sure there are no errors there and click CLOSE.

Look at the Inventor Project File again and your library should be good to go 😊



As with all Vault migrations I would suggest that you TEST this thoroughly in a 'test environment' before you do it to the 'LIVE' vault.

For extra information, you can find it here on wiki help.

http://wikiphelp.autodesk.com/Inventor/enu/2013/Help/0000-Install0/0192-Data_Mig192/0193-Data_Mig193/0198-Migrate_198

Chris Turner – Email chris.turner@cadline.co.uk or follow me on Twitter @ChrisCADline