

# Drawing Resource Transfer in Inventor

**A summary of two methods which can be used to update an old drawing with a new set of drawing resources including the border and title.**

## All Inventor Users

Having a custom company drawing template is common practice allowing you to have a standard drawing style that everyone uses. This template file will get updated from time to time with changes, maybe a new company logo or updated copyright statement or address. Sometimes even a more major design change to the template. Updating the template file obviously means that every new drawing you create will have the new borders and title block etc.

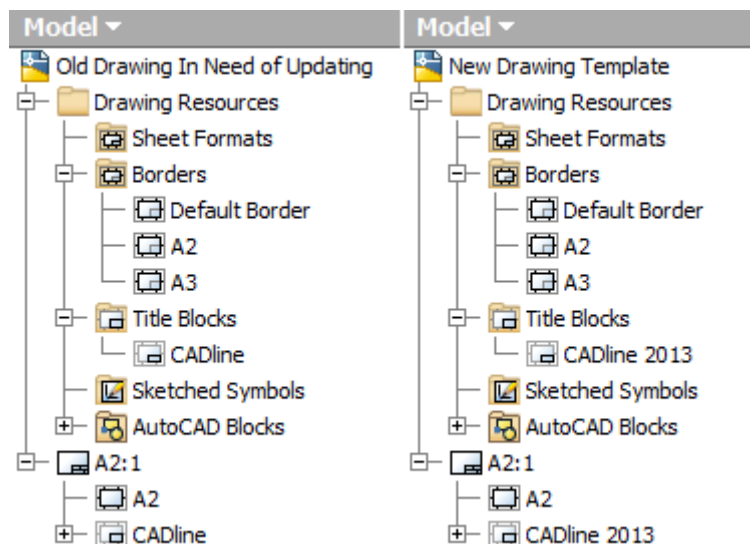
But what about your old drawings.

Maybe you need to update and revise an old component and its drawing. The drawing will have been created from an old template file so its border and title won't match your new one. You could recreate the whole drawing again using the new template but there is a much simpler way. In fact there are two ways.

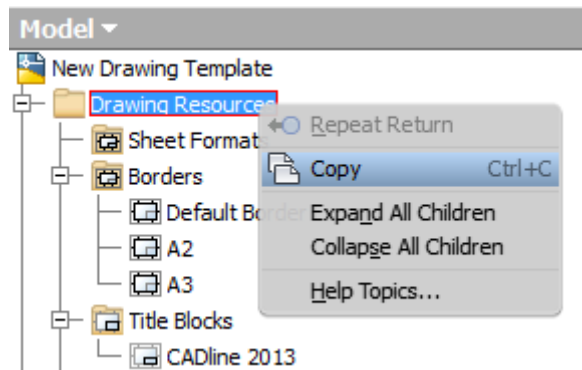
The first option is for a case by case, drawing by drawing update. This is a simple way to update the border etc on the odd drawing that you open.

Firstly open the old drawing you want to update. Then create a new drawing using the new template file.

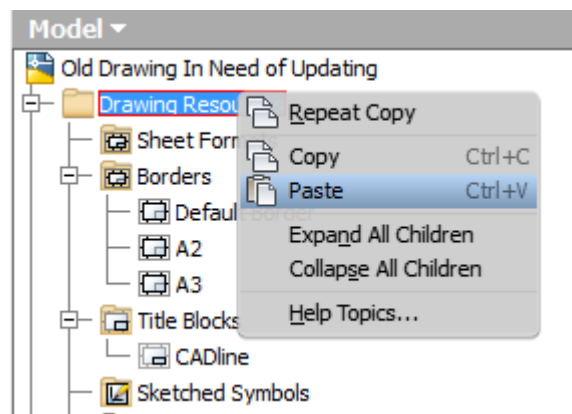
Expand both the drawing resources folders. If the names of your borders and title blocks are the same in both drawings then this makes life a lot easier. I know this cannot always be the case but I would recommend always trying to have the same name for your borders as your update life will be so much simpler. If they are different don't worry though I will cover both.



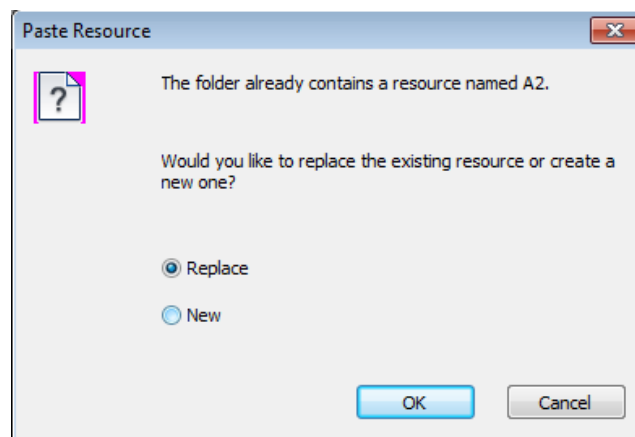
In the new blank file right click and copy the “Drawing Resources” folder in the model browser.



In the Old Drawing right click and paste the Drawing Resources folder.



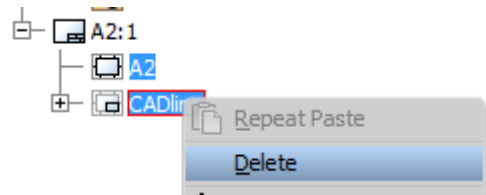
If your Borders and Title blocks have the same name then you will get an option/warning dialog. You will get a dialog for each item which has the same name.



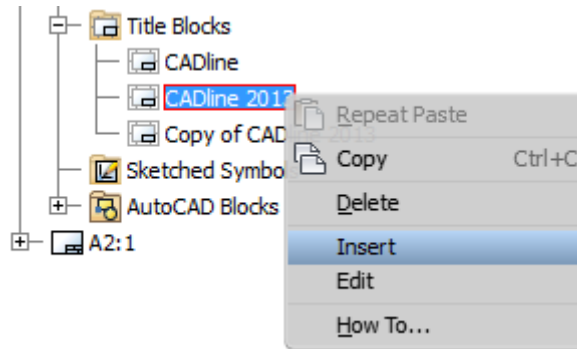
If you choose 'Replace' then this will switch out all your old Drawing Resources for new ones. Then drawing will then be up to date with the new border etc. Your work is done.

If you say 'New' this will place the new resources as copies and they won't be applied to the drawing. If your resources have different names they will be copied into the Drawing Resources folder but again won't be applied.

To apply new drawing borders or title blocks will first need to delete them from all your sheets. Save yourself some clicks and select them together.



Then Insert the new drawing border and title block into the drawing from the 'Drawing Resources' folder.

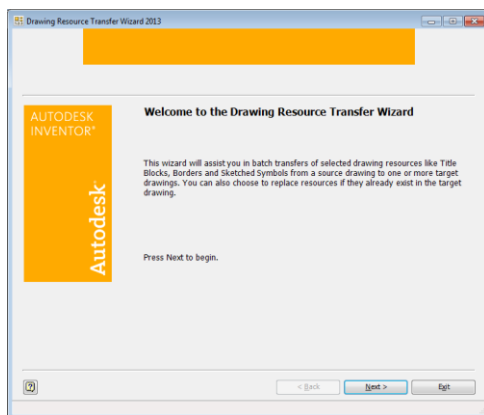


Again your work is done.

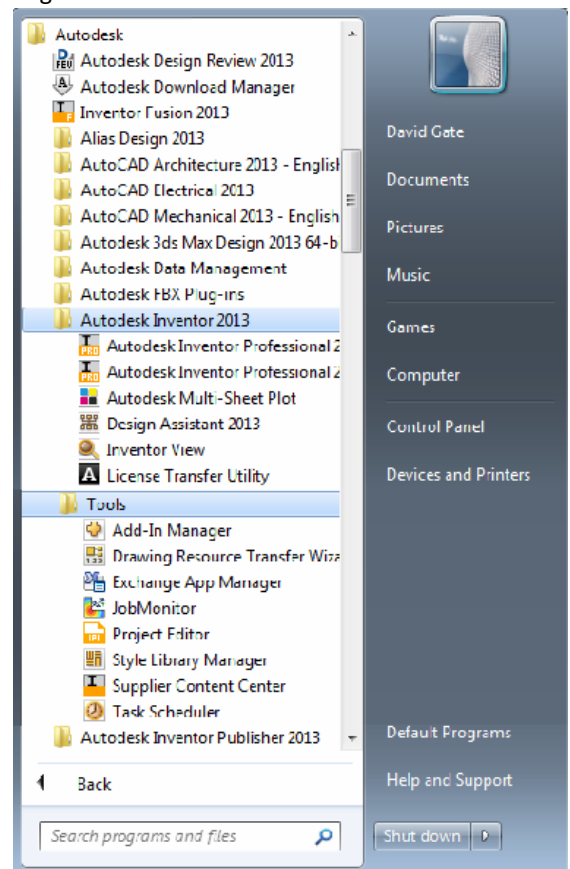
As mentioned this method works on a case by case basis. If you find yourself having to do this on a lot of drawings or you need to make wholesale large updates to lots of old drawings then there is a great tool to do this.

When you install Inventor you also get a handy 'Drawing Resource Transfer Wizard' tool.

If you browse through your start bar to the Autodesk Inventor folder and then into the tools folder you will find it there.



To use the 'Drawing Resource Transfer Wizard' Inventor will need to be closed.



This wizard tool will assist you in batch transfers of selected drawing resources like title blocks, borders and sketched symbols to one or multiple drawing files.

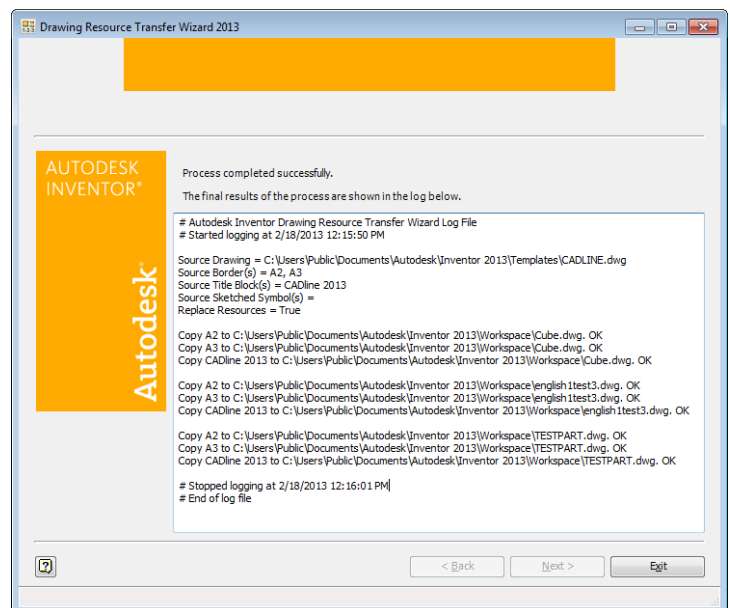
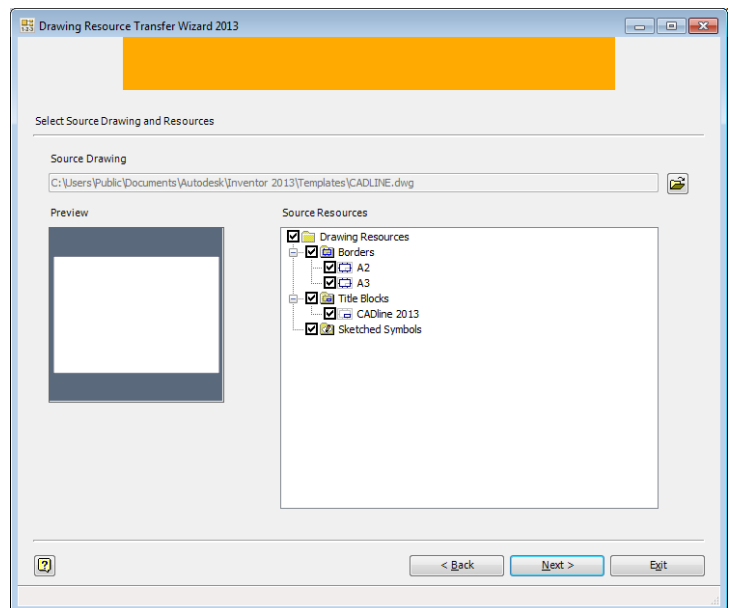
Firstly it will prompt you to pick a drawing file. Pick the new drawing template you have created with the latest drawing resources. You can then pick which resources you want to transfer.

Then it will prompt you to pick the target drawings you want to update. You can select multiple files here. By using ctrl or shift keys to aid your selection. If you select AutoCAD DWGs rather than Inventor DWGs these won't get included. If you also select a drawing file done in an older version of Inventor then it will require migrating before you can run the drawing transfer wizard on it. You can do this easily by using the Task Scheduler also found in the tools folder under Inventor.

You get the same prompt about replacing resource items with the same name. Again if you say yes to this your drawings will all then auto update with the new border.

Once you have run the operation you will get a log of all the resources copied and to which files.

If your new template borders and frames had different names then you will still need to open the drawing and delete the existing applied resources and apply the new ones.



You can find more information about Drawing Resources and the transfer wizard on the wikihelp.  
[http://wikihelp.autodesk.com/Inventor/enu/2013/Help/1310-Autodesk1310/1814-Drawings1814/1815-Drawings1815/1820-Drawing\\_1820](http://wikihelp.autodesk.com/Inventor/enu/2013/Help/1310-Autodesk1310/1814-Drawings1814/1815-Drawings1815/1820-Drawing_1820)