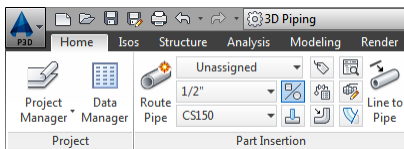


# Create a Static Pipe Supports Spec Toolpalette

## AutoCad Plant 3D 2014

Autodesk introduced a dynamic toolpalette into Plant 3D for the 2012 release. This functionality provides the automatic generation of the toolpalettes Dynamic Pipe Spec and Pipe Supports Spec within a toolpalette group called AutoCad Plant 3D – Piping Components.

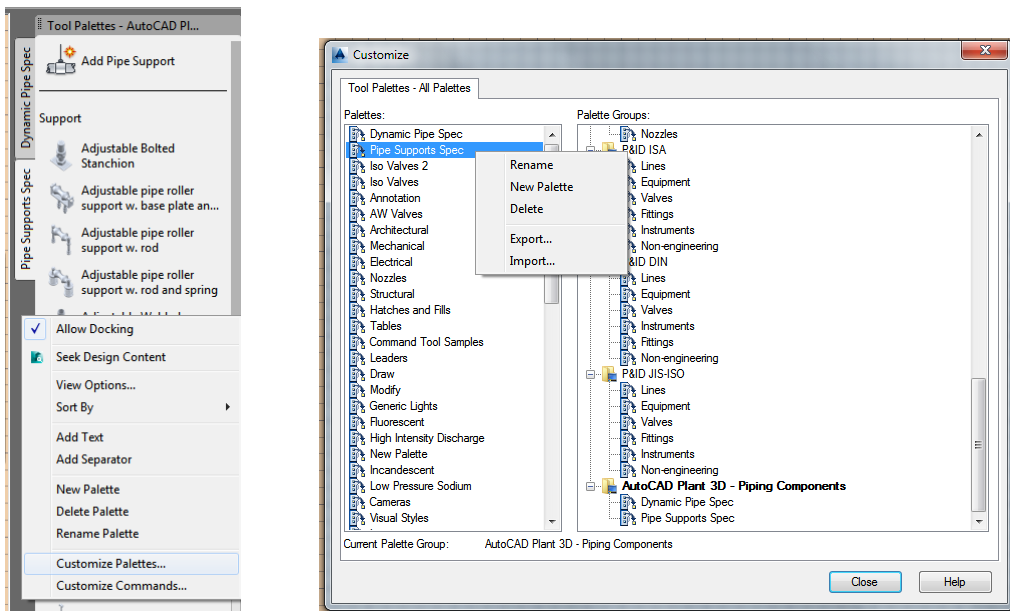
The concept behind it is that the Dynamic Pipe Spec palette updates automatically to reflect the current Pipe Spec selection on the Part Insertion panel of the Plant 3D Home tool ribbon.

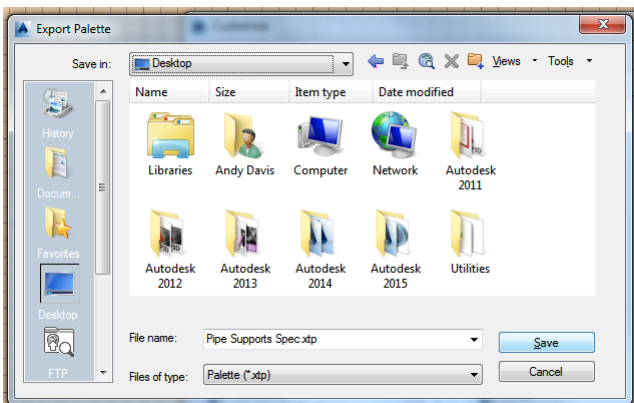


Sometimes there can be a significant delay in rebuilding the toolpalette when the Pipe Spec is changed. This delay can be sufficient to render the functionality detrimental to productivity. Fortunately, the dynamic toolpalette can be disabled to allow static toolpalettes to be used. However, when the dynamic toolpalette is disabled, the Pipe Supports Spec toolpalette is deleted. To overcome this, it is possible to save a copy of the Pipe Support Spec before the dynamic toolpalette is disabled.

### Export the Pipe Supports Spec Toolpalette

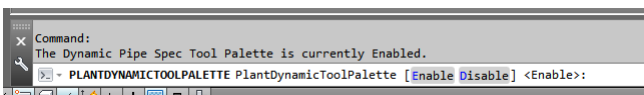
To save the Pipe Support Spec, it may be exported through the Customize Palettes window, as shown below.





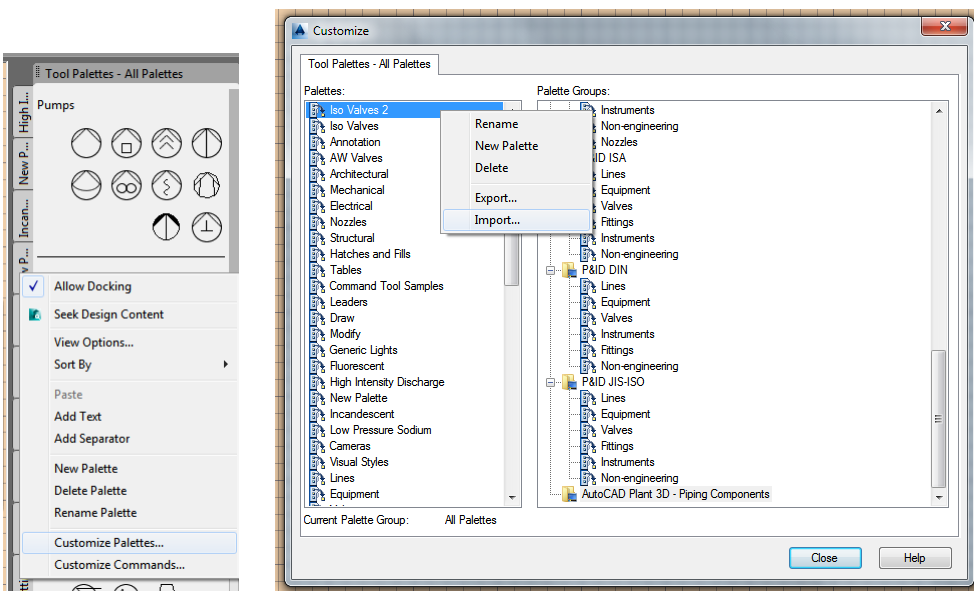
### Disable the Dynamic Toolpalette

Once the the Pipe Support Spec has been exported, the dynamic toolpalette may be disabled. The command PLANTDYNAMICTOOLPALETTE is used to enable and disable the dynamic toolpalette.



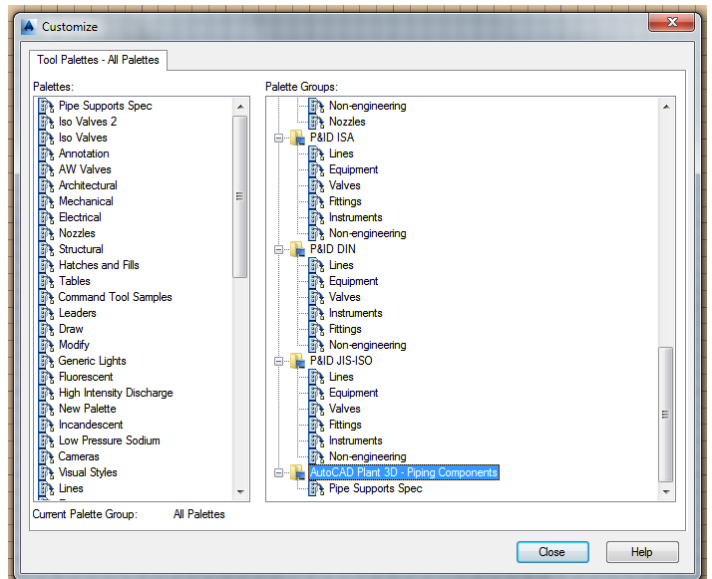
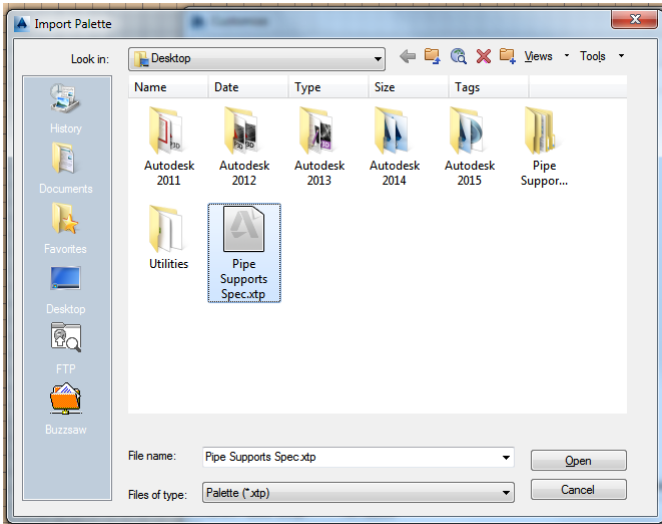
When the dynamic toolpalette is disabled, the AutoCad Plant 3D – Piping Components toolpalette group is emptied and is no longer displayed.

However, the group header is retained in the Customize Palettes window.



### Import the Pipe Supports Spec Toolpalette

It is possible to import the saved Pipe Supports Spec from earlier and add that to the new, empty AutoCad Plant 3D – Piping Components toolpalette group.



The AutoCAD Plant 3D – Piping Components toolpalette group and Pipe Supports Spec toolpalette are now static.

## Create Pipe Spec Toolpalettes

Additional, Pipe Spec toolpalettes can be added to the group through the Plant 3D Spec Viewer Window.

