

How to filter pipes at different levels in Revit

Revit MEP (but can be applied across all Revit disciplines)

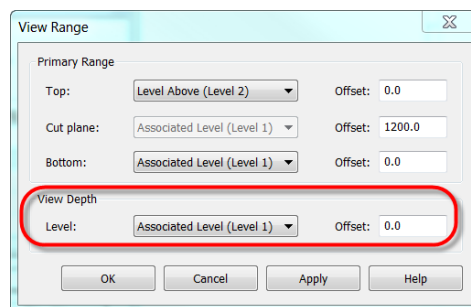
In this White paper its going to explain how you can use filters to in your view to highlight pipes on the view at different levels.

Creating Filters

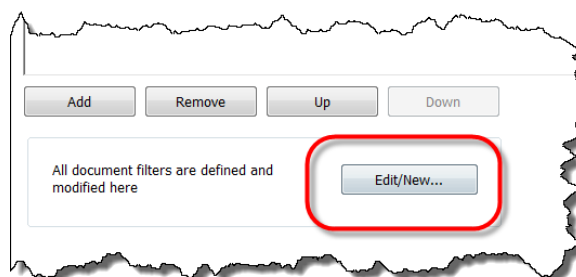
So here is the scenario: *You have a drawing where you need to show your pipework running below ground and also show on the same plan the pipework running above ground in Revit.*

So how would you go about it in Revit, well one option you could use it filters and here is how.

Before you set up any filters you will need to make sure View Depth on your View Range is set low enough, if it isn't you won't even see the pipes below ground.

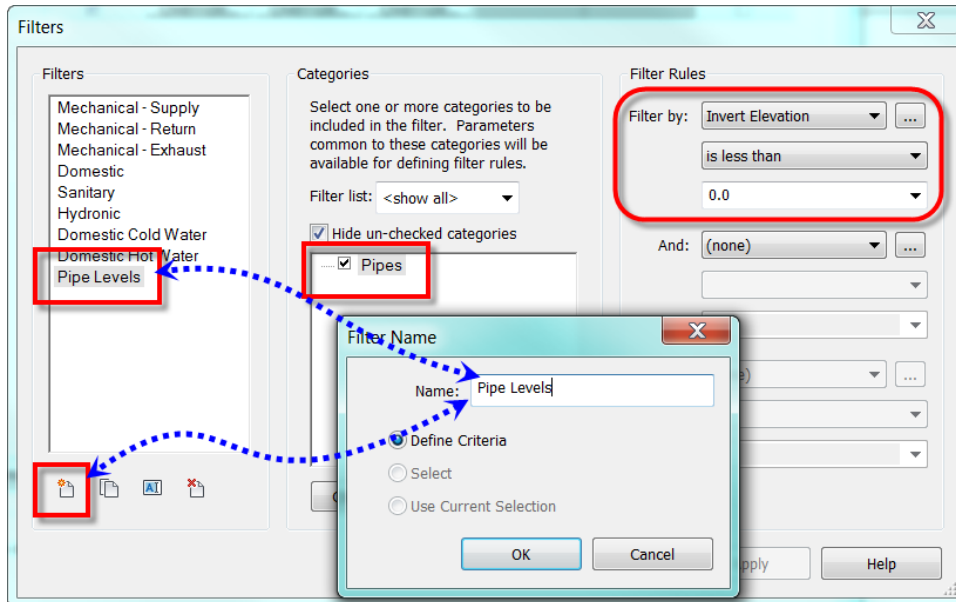


1. Open you Visibility Graphics, this can be found on the Ribbon **View tab > Graphics panel > Visibility/Graphics**.
Note: *We could open Filter but to save time we are going to open the filters from Visibility Graphics.*
2. A lont the tabs at the top click on the Filters tab, then select Edit/New at the bottom left.



3. In the filters dialog box click  to create a new filter and call it **Pipe Levels** (as shown in below image).

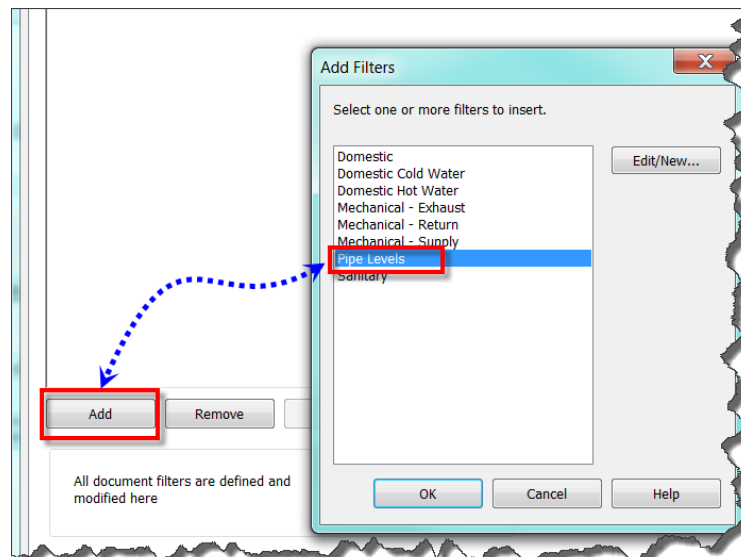
- Under the Categories section select Pipes as this is what we are going to apply the filters to.



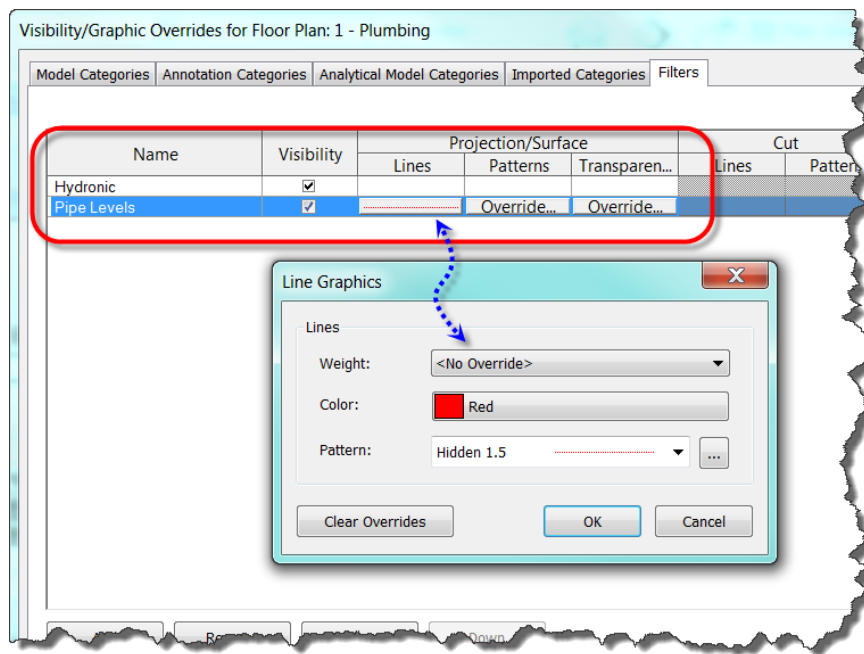
- In the Filter Rules section select *Filter by: Invert Elevation*, *Rule: is less than*, type the value as **0.0**.
- Click **OK**. This will take you back to the Visibility Graphics dialog box.

We have set up a filter all we need to do is add the filter so we can apply it to the view.

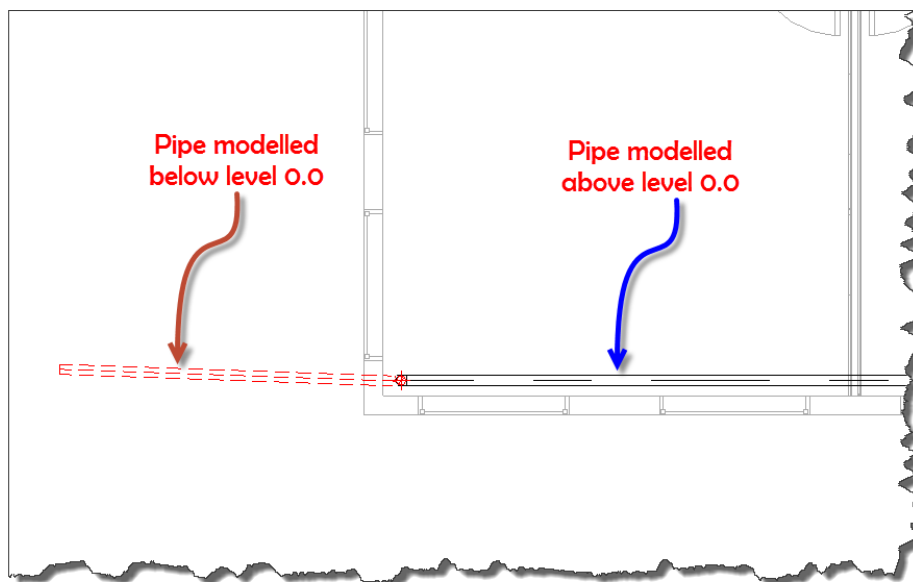
- Select **Add**, then select **Pipe Levels** from the list and click **OK**.



- All that's left to do now is select what settings you want to apply to **Lines, Patterns, Transparency**. (As shown in below image).



In the above image I have applied a colour **RED** and a **Line Pattern Hidden 1.5**, so any pipes modelled below **level 0.0** are show in Red with Hidden 1.5.



I hope you have found this White Paper usefull and its give you a better insight to using Filters in Revit.