

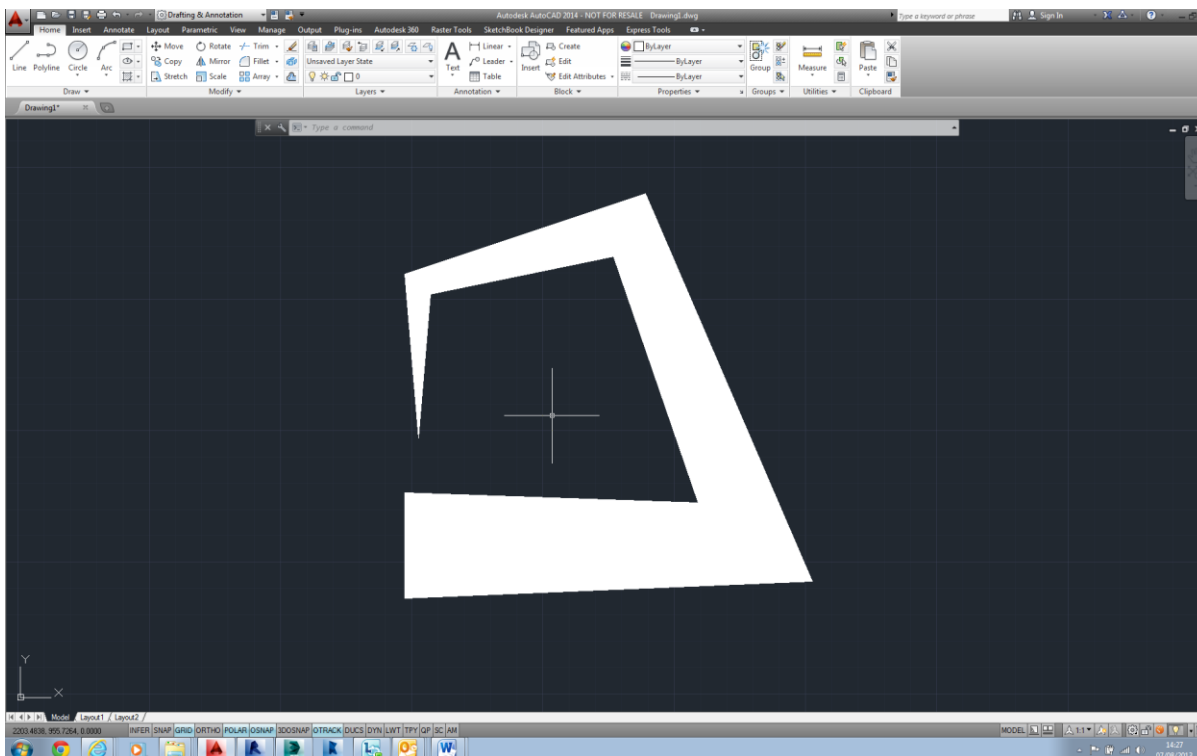
The “PLINEREVERSEWIDTHS” System Variable

AutoCAD 2014

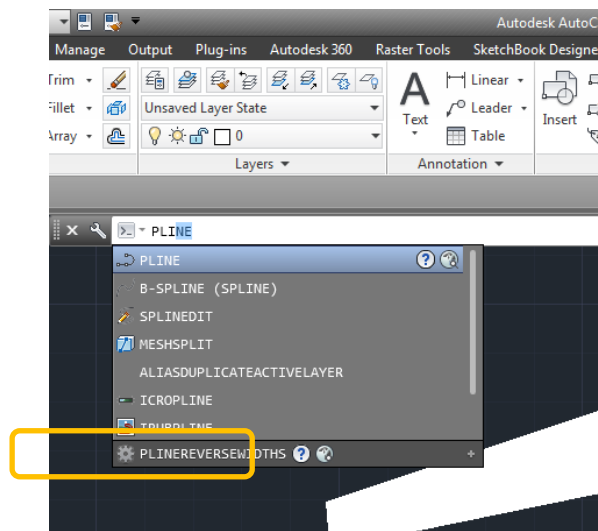
For AutoCAD users that regularly use polylines there is a new system variable in 2014, with allows the width reversal of non-uniform width polylines.

Named “PLINEREVERSEWIDTHS”, it works in conjunction with the “REVERSE” sub command in “POLYEDIT” (PEDIT).

Below is a polyline with varying widths.

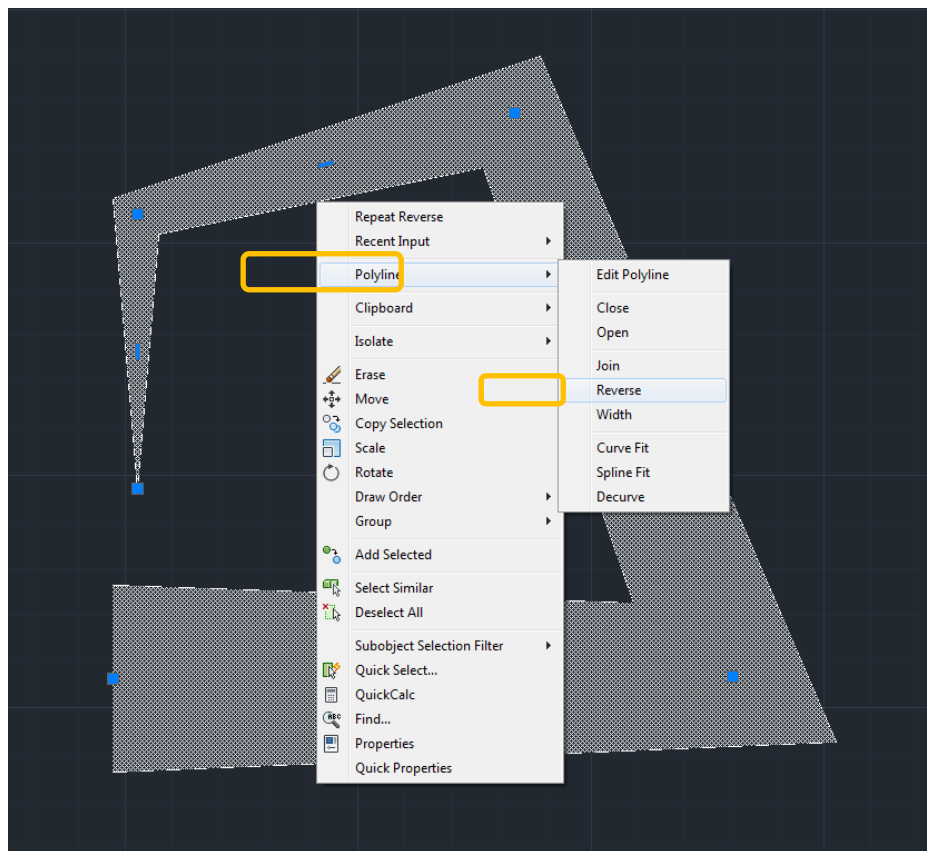


In the command line type in “PLI” and from the displayed list of functions “PLINEREVERSEWIDTHS” can now be selected.

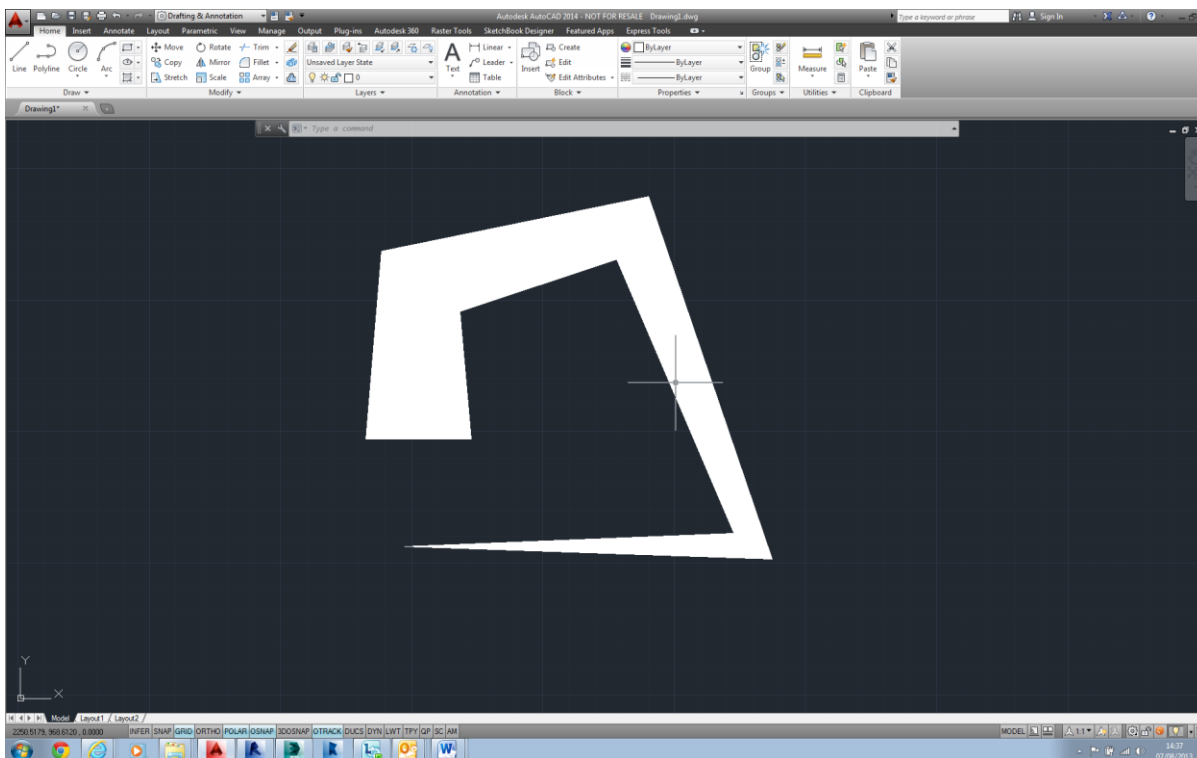


Set the system variable “PLINEREVERSEWIDTHS” to 1.

The polyline can now be selected to display the grips, right mouse click to display the menu; select “POLYLINE” then “REVERSE”.



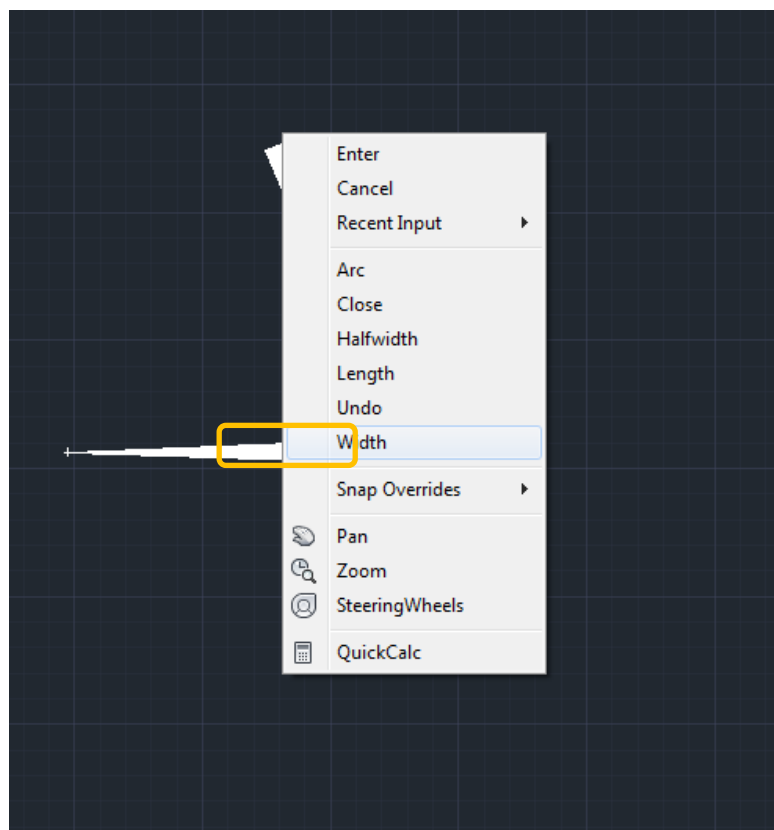
Polyline widths are now reversed, as below.



If the system variable “PLINEREVERSEWIDTHS” is set to “0” no change will take place when the “REVERSE” command is used.

However if the “POLYLINE” has been modified using the “SPLINE” or “FIT” sub commands the results may not give the desired results.

As each segment of the “POLYLINE” is created the “WIDTH” can be changed prior to drawing the end point of that segment, (right mouse click to access the “WIDTH” sub command).



Or the polyline widths may be edited after the line has been drawn via the properties dialogue box.

