

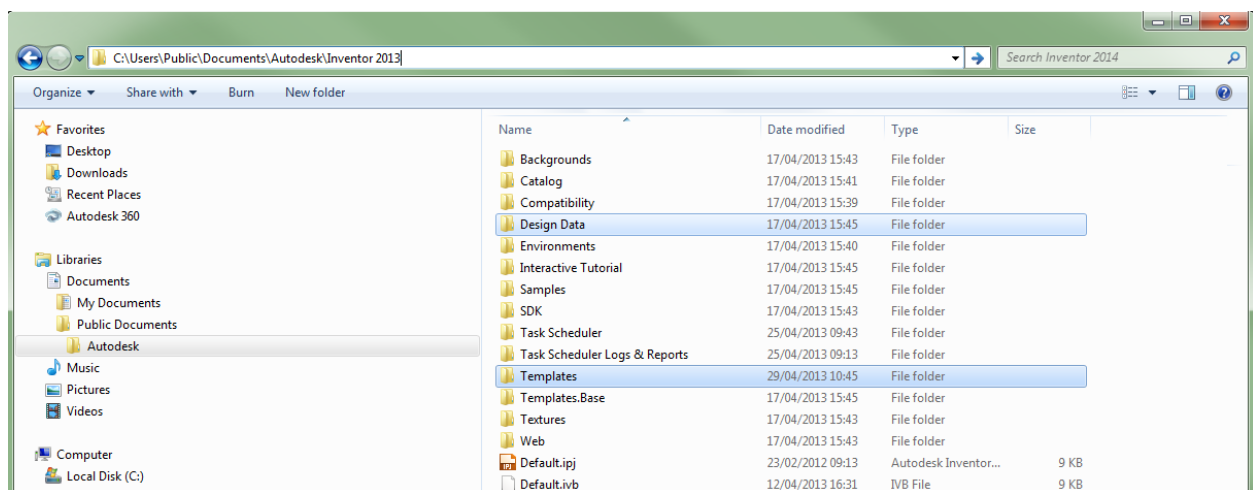
Migrating To Inventor 2014

Inventor 2014

With the release of Inventor 2014 comes another round of upgrading and migrating of data, the most important of these being your design data, templates and materials. This white paper will guide you through the process hopefully making your move to the latest software simple and pain free.

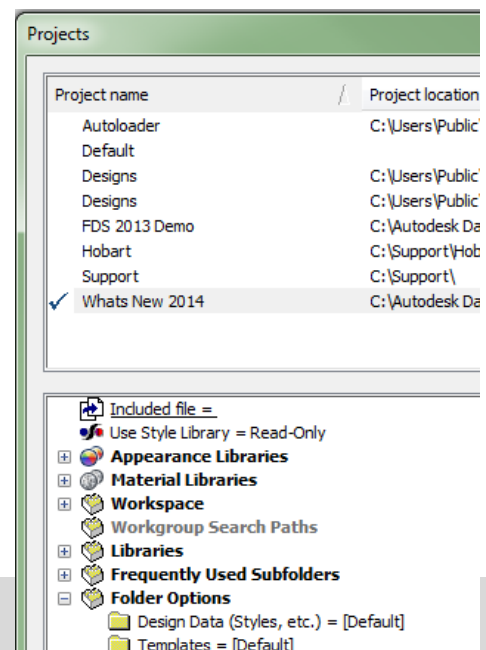
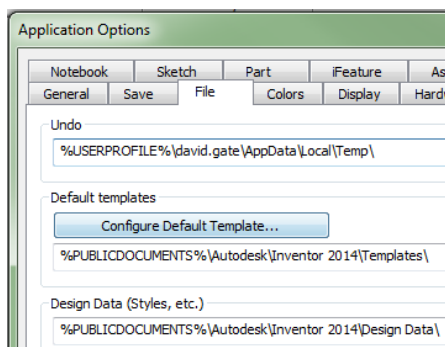
First Steps:

Before we go ahead and migrate all of our data the first step is to make copies of all the data we want to migrate and transition to 2014. Unless you have everything in a custom location you should find your design data, templates etc in the following location.



C:\Users\Public\Documents\Autodesk\Inventor 2013

If you did move the location of these then you can find the location from the Application Options or the Project File you work with.



I would leave these 2013 files as they are (my backup), so copy the above highlighted folders to a new location.

C:\Transition would be a sensibly named location. This folder will only be used temporarily.

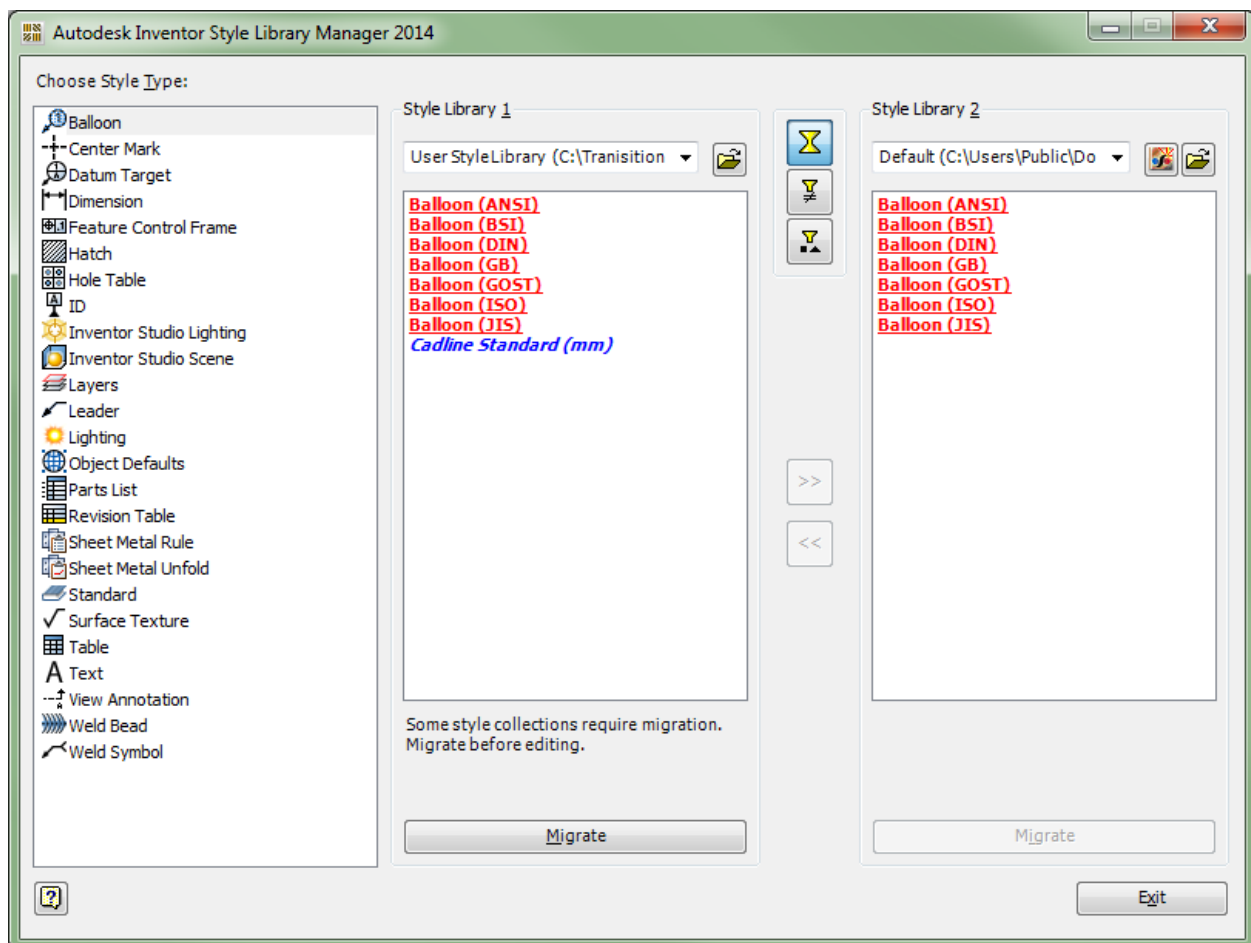
Migrate Styles and Standards:

Now that we have a copy of our design data and templates we can migrate these to 2014 (assuming you already have it installed). To do this we are going to use 2 tools.

Both tools can be found in the following location in your windows start menu.

Start Menu\Programs\Autodesk\Autodesk Inventor 2014\Tools

The first tool we will use is the “**Style Library Manager**”.



Under Style Library 1 browse to the Design Data folder copied into the newly created "Transition" folder. Under Style Library 2 browse to where you want your Design Data to end up. I have picked the 2014 default location. You could choose a new location entirely but I want to amalgamate the 2013 styles with the new 2014 ones.

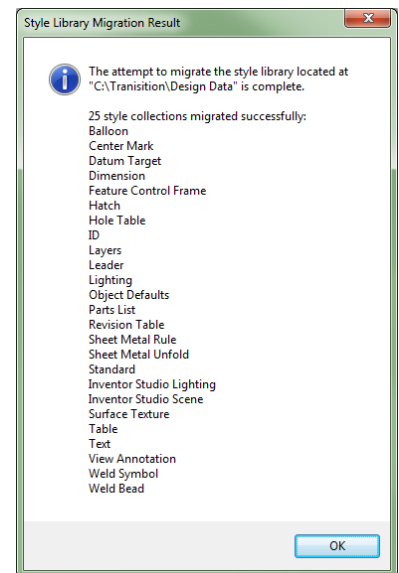
You can see that the style library manager gives me visual clues as to the status of my design data. If a style exists in both Style Libraries and is an exact name value match (that is, Equal), then the text in the style lists has a normal font display.

If a style exists in both Style Libraries, is an exact name match, and is not a value match (that is, Not Equal), then the text for this style name displays as bold, underlined, and red.

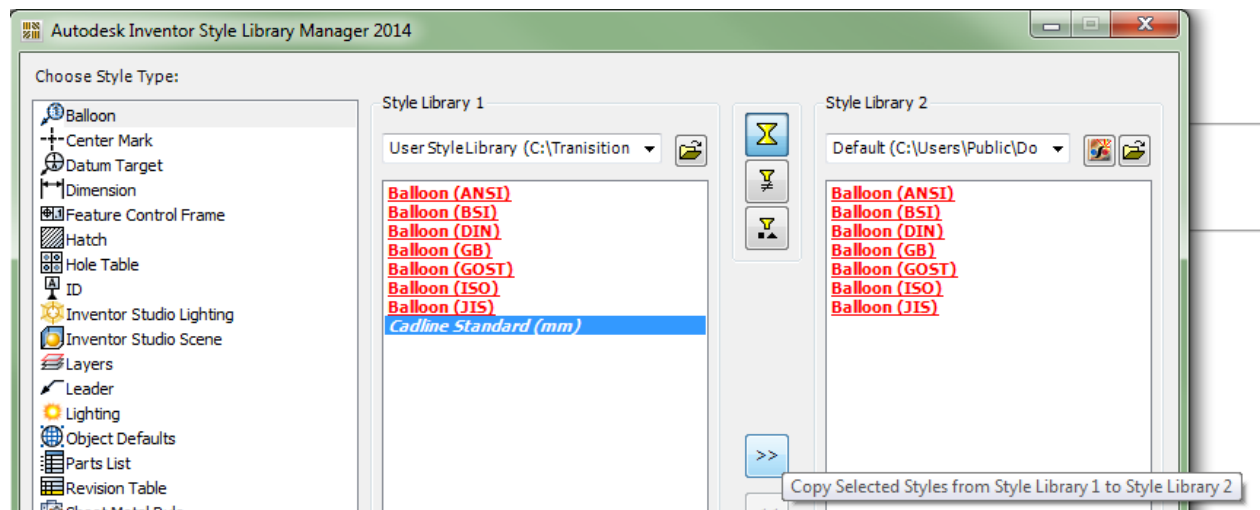
If a style only exists in one Style Library (that is, is Unique), then the text for this style name displays as bold, underline, and blue.

Before we can copy across our existing styles first we need to hit the migrate button underneath our transition styles library.

Once migrated we get a successful dialog as shown on the right.



Now that we have migrated styles we can move them across to our new library. Select all the styles you wish to copy across and then pick the arrow to move them.



If you pick to create a new library then all of the styles can be copied across as none of them will exist.

These styles will then be available in your new Release of Inventor.

If you have changed any of the other design data such as Hole and Thread xls files or the in-application templates (for Routed Systems) then these need migrating and copying across as well (see the templates migration section further down).

For more information there is a lot as always on the wikihelp pages.

http://wikihelp.autodesk.com/Inventor/enu/2014/Help/1283-Inventor1283/1284-Fundamen1284/1458-Styles_a1458/1474-Style_Li1474

Migrate Materials:

Now that we have migrated and copied all our styles and standards across we have a few remaining tasks left.

If you have created any custom material libraries then this is nice and easy. Copy the ADSKLIB file from your old design data into the new design data folder and add it to your project file.

If you're migrating from a pre-213 release of Inventor then it is worth using the Migrate Inventor Styles tool as this will migrate the materials across to the new Material and Appearance options.

This tool works in a similar way to the Style Library Manager, pick your 'to be migrated' design data folder. Pick the destination, either a new library file or append to an existing. Be warned if you append a standard Inventor Material Library to another Inventor Material Library you will have lots of duplicates with a suffix of _1.

Migrate Templates:

The last step is to migrate all your company templates.

