

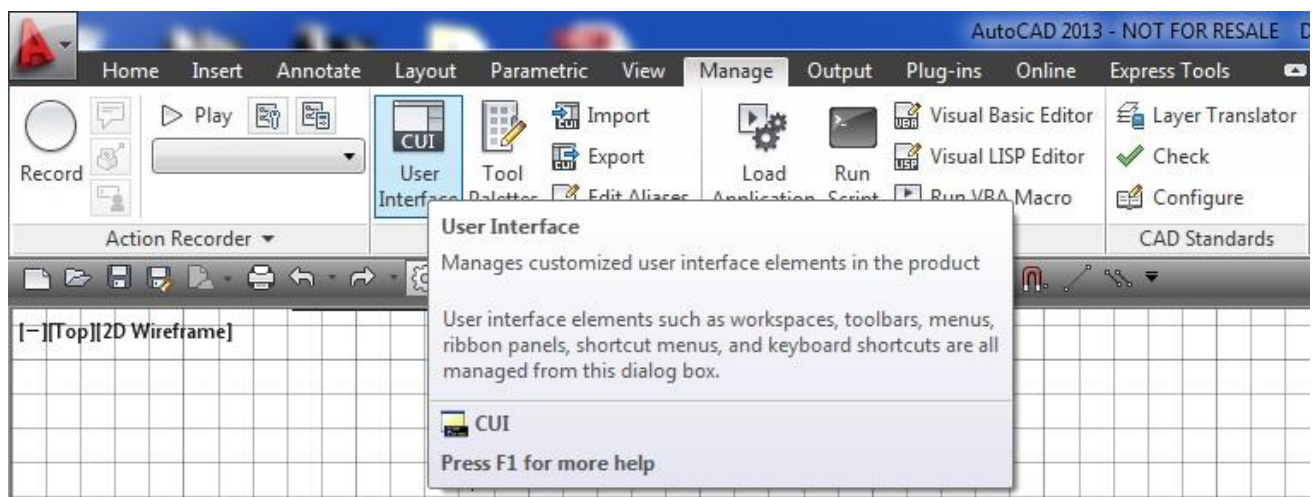
AutoCAD 2013

Multi-coloured Dashed Lines in AutoCAD

Use the AutoCAD Multiline tool functions to create multi-coloured dashed lines.

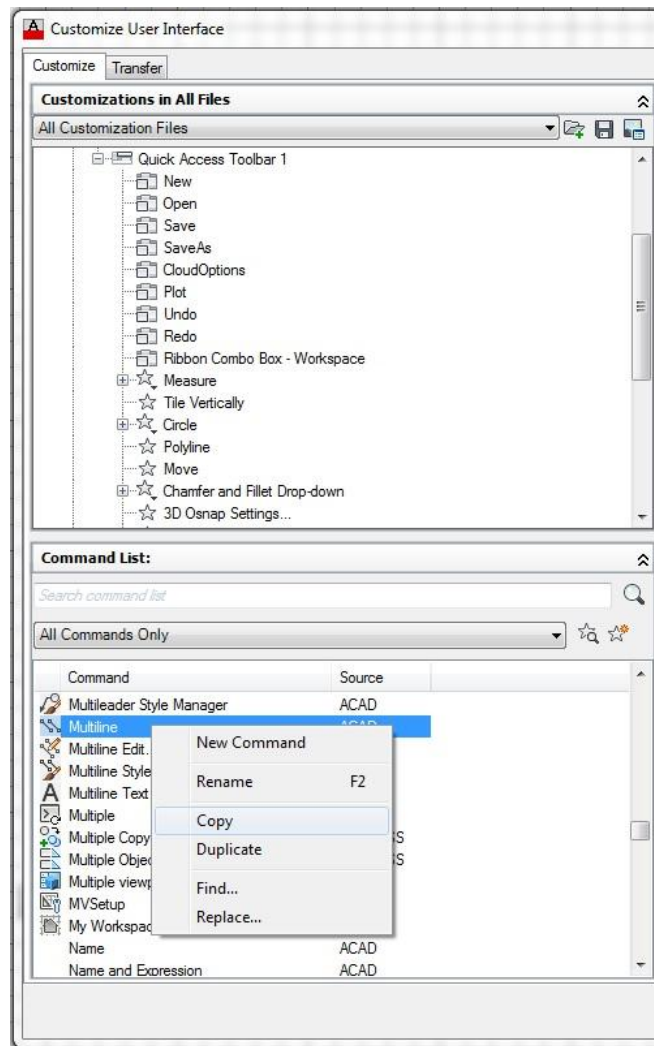
You can access the Multiline tool by typing `mline` on the command line or by selecting it from the format tab on the menu bar. You can also place the Multiline tool on the Quick Access Toolbar (QAT) via the Customise User Interface (CUI) option from the Manage tab on the Ribbon (Fig1).

Fig 1: Access CUI



Clicking the CUI button on the Ribbon will open the CUI customisation dialogue box (Fig 2). Study the layout of this dialogue box before making any changes.

Fig 2: CUI Dialogue Box



Select Multiline from the All Commands Only section of the dialogue box.

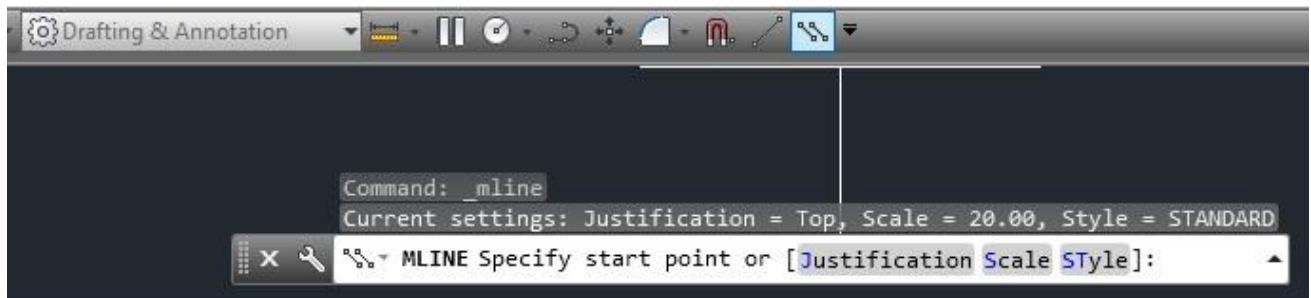
Right click and select copy.

Paste into QAT in the top half of the dialogue box shown.

You can also try dragging it.

The Multiline icon now appears in the QAT (Fig 3).

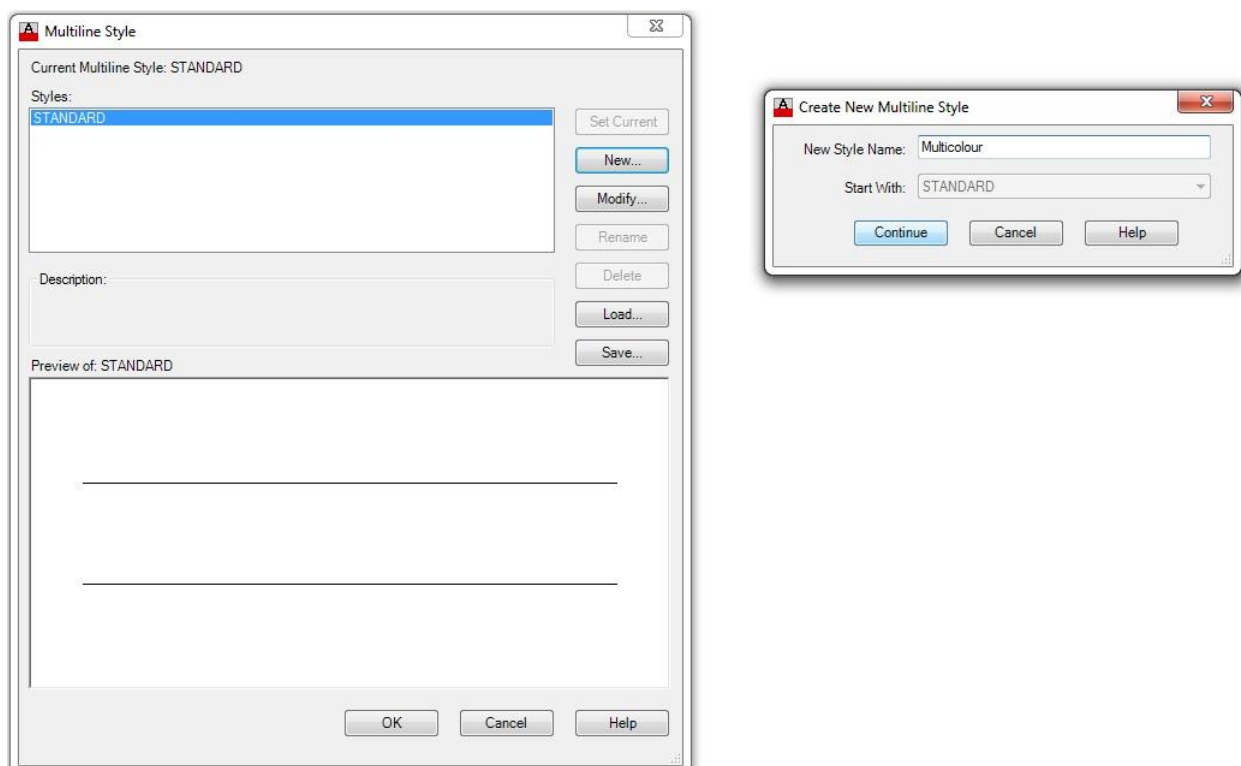
Fig 3: Multiline Icon on QAT



Before using the Multiline tool, we need to create a Multiline Style called Multicolour and give it a description.

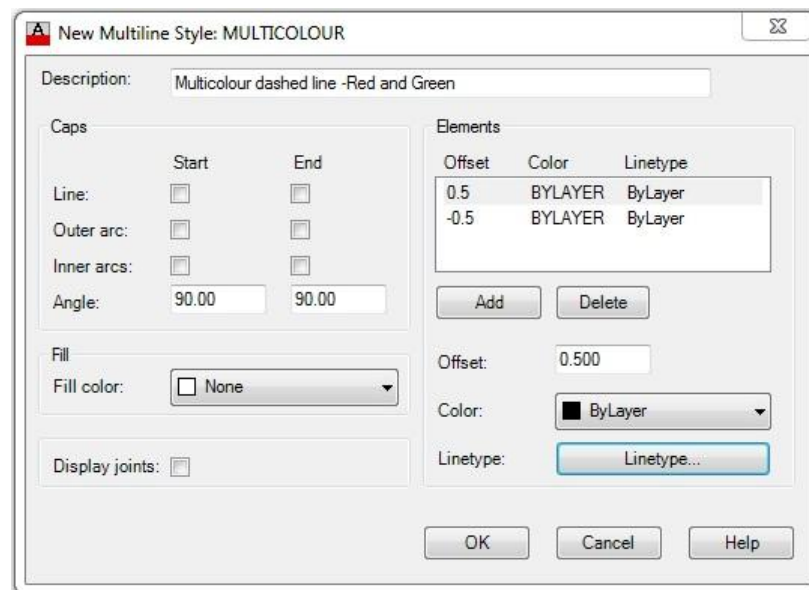
- Type `mlstyle` on the command line then click enter to open the Multiline Style Dialogue box Fig 4).

Fig 4: Multiline Style Dialogue Box and Create New Multiline Style Dialogue box



- Click the New button in the Multiline Style Dialogue box and the Create New Multiline Style dialogue box will open (Fig 4 above).
- In the New Style Name label type Multicolour and click continue. The following dialogue box opens (Fig 5). Type in the description as shown.

Fig 5: New Multiline Settings



- Under Elements, the first line is selected by default. Click on Linetype to open the Select Linetype Dialogue box (Fig 6).

Fig 6: Select Linetype Dialogue Box

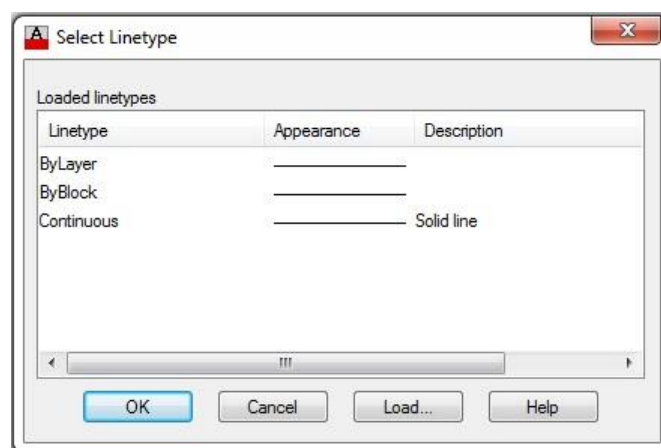
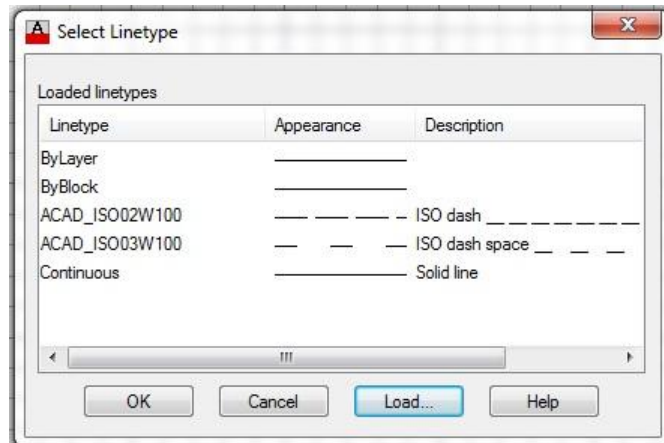
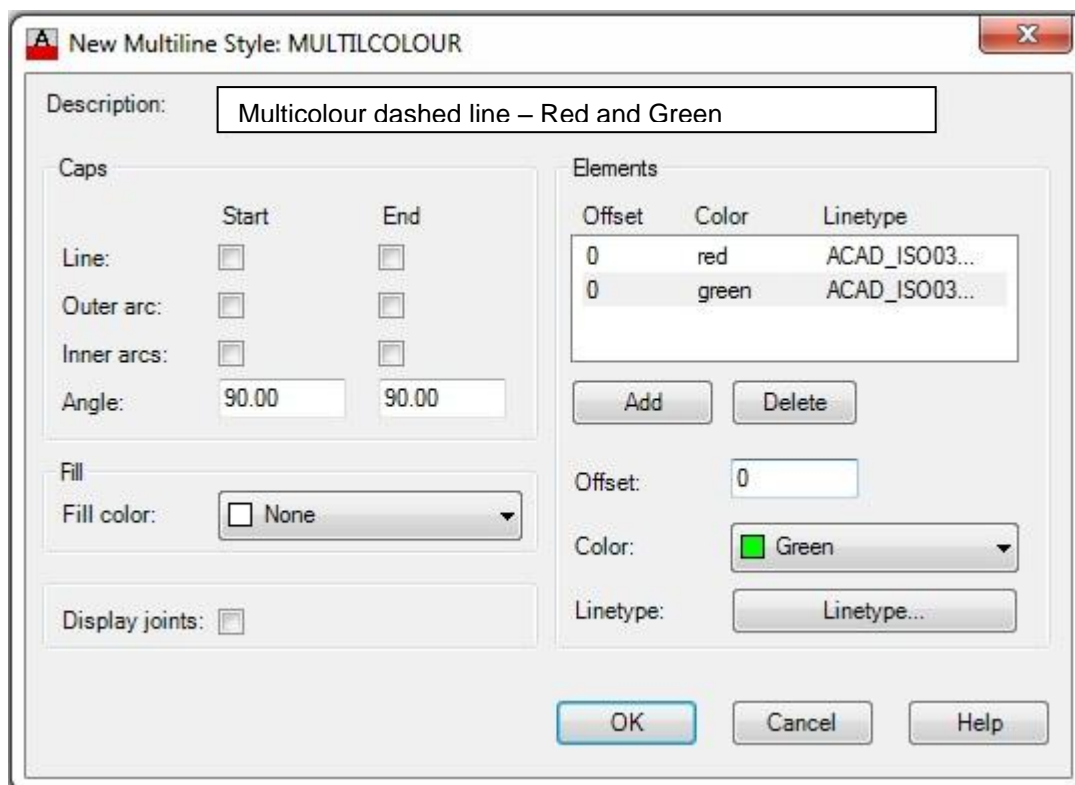


Fig 8: Select Linetype Dialogue Box Updated with two dashed Linetypes



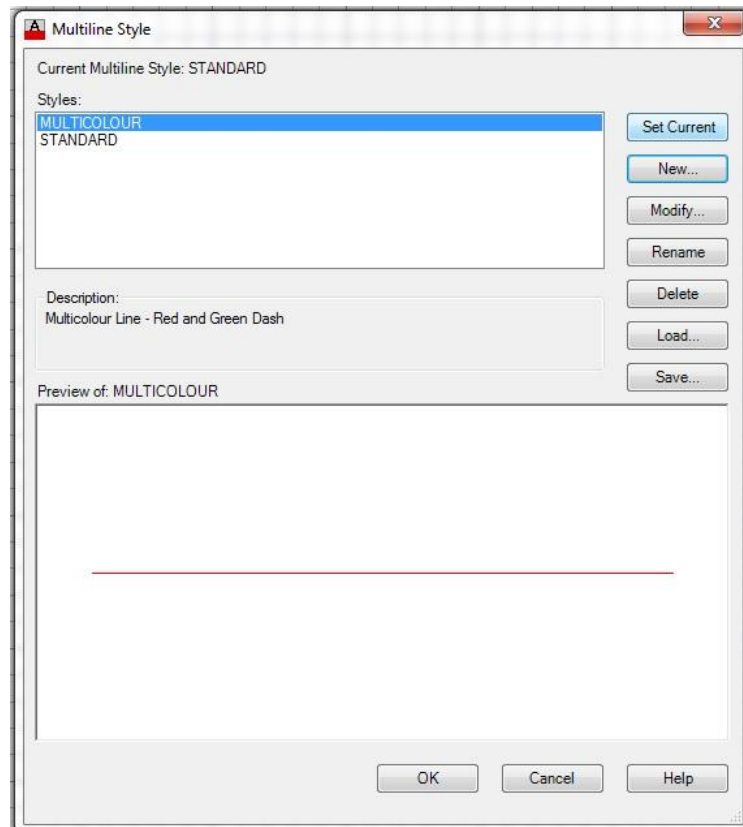
We can now apply a linetype, a colour and an offset to the two default lines as shown in Fig 9.

Fig 9.



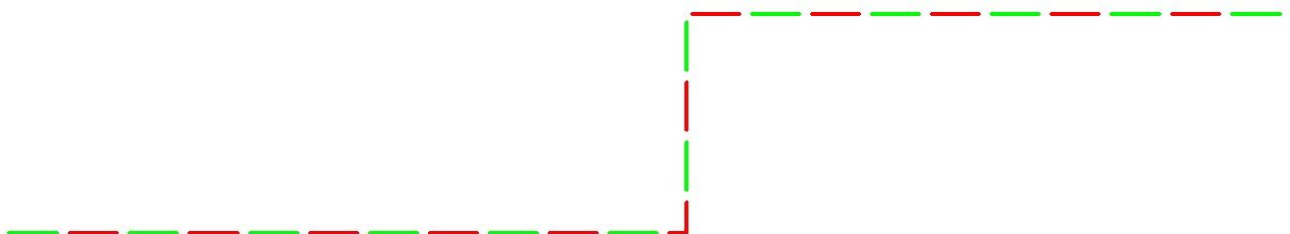
Because we have applied a 0 offset to both lines the preview will look like a single line (Fig 10)

Fig 10: Multiline Style Complete



Click the Set Current button and try out your new Red and Green dashed multiline (Fig 11)

Fig 11: Multi – Coloured Dashed Multiline



Date: May 2013