

Autodesk Inventor – Frame Generator (Tips & Tricks)

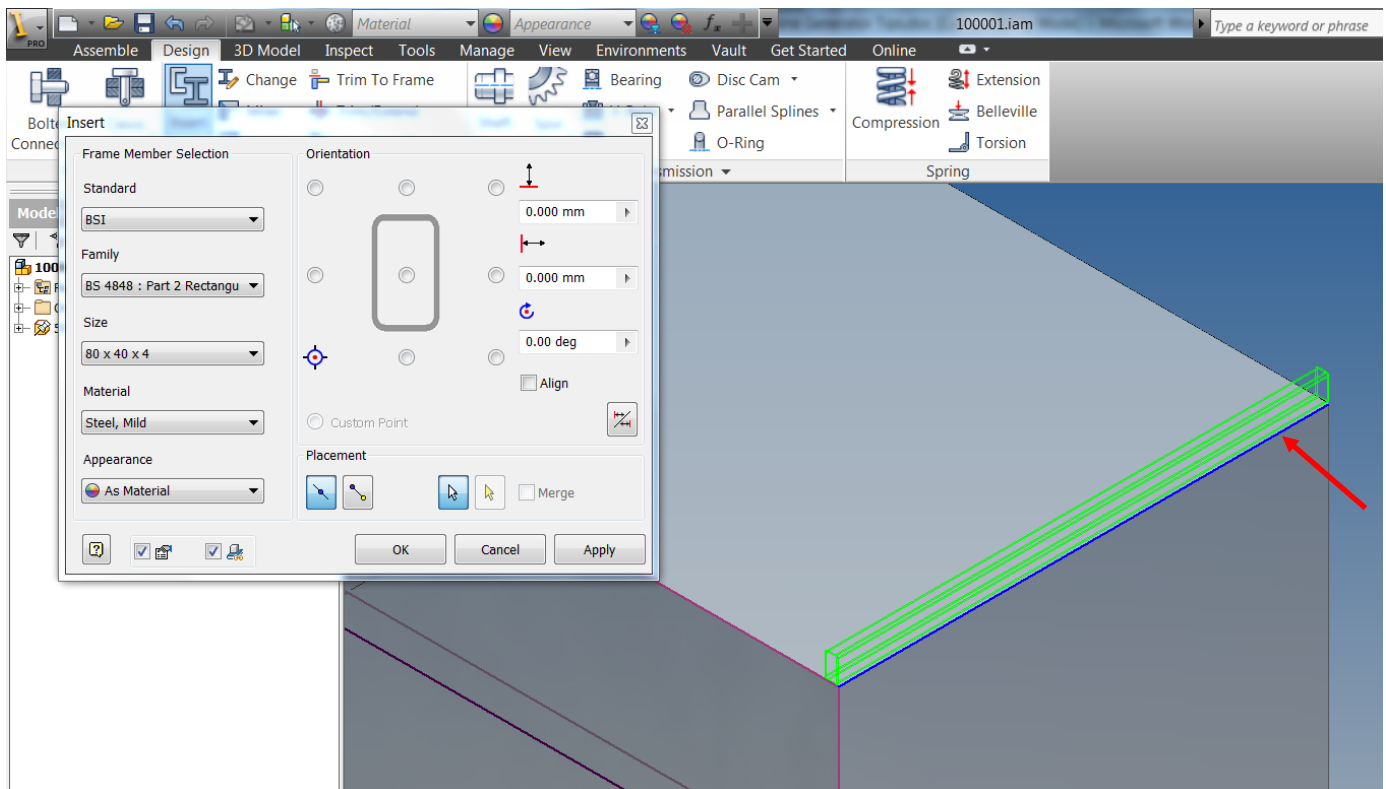
Subtle tips for those using Autodesk Inventor's Frame Generator

All users of Frame Generator and Vault

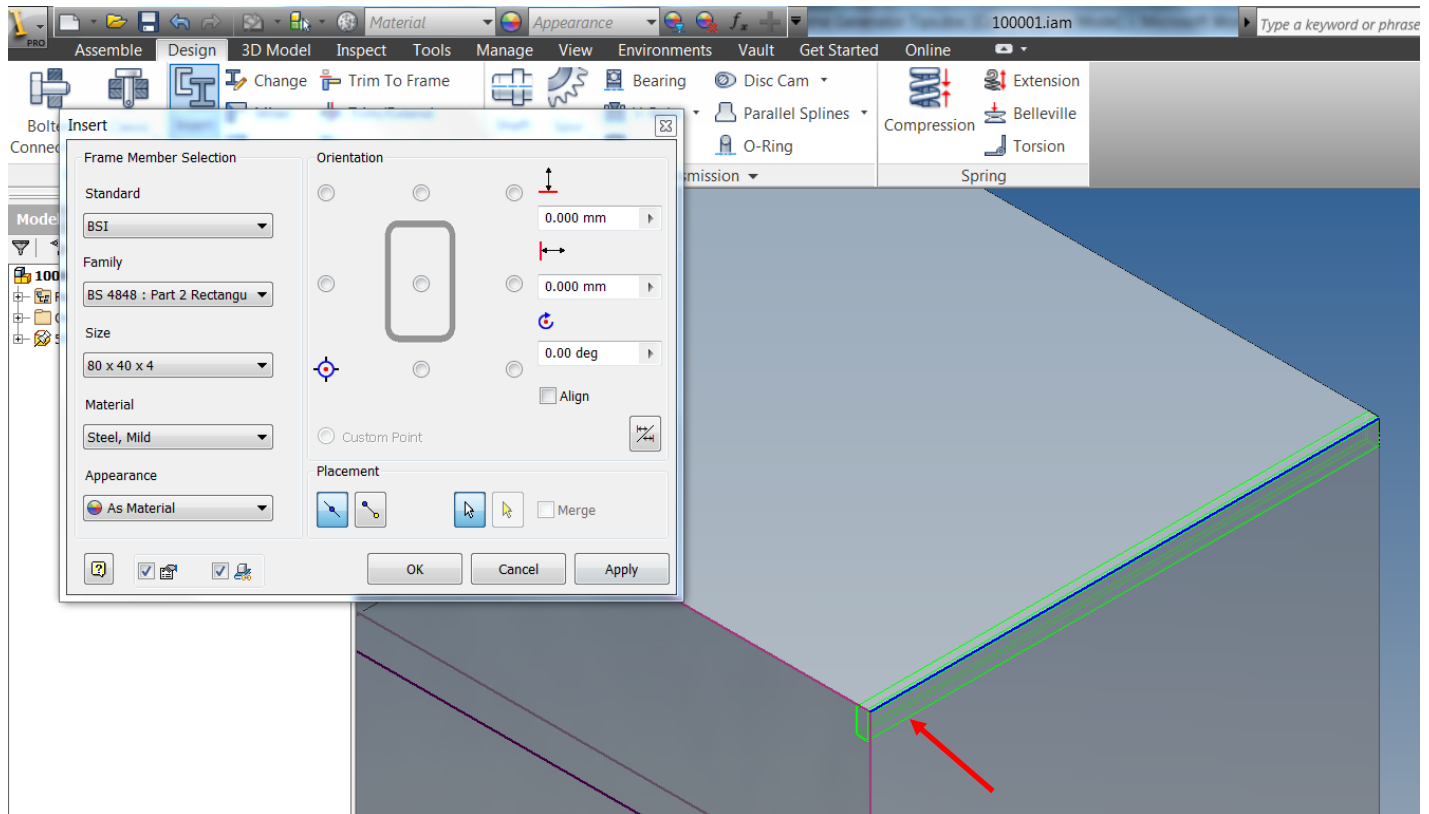
Inventor Frame Generator –Tips & Tricks (No.1)

For those who are new to using Inventor's Frame Generator or may be regular users, the selection of the frame members can sometimes seem challenging when trying to obtain the correct orientation. The following image of a model and the Insert dialog for the frame members shows the orientation radio button set at bottom-left, where the line/edge has been selected on the right-hand side (shown approximately at the point of the red arrow).

Note that the preview shows (in green) shows the position to be outside 'skeletal' box.



However, should this not to be the desired result the correct in-the-box position can be achieved without 'experimenting' with orientation selection. First de-select the line using Cntrl+pick on the edge selected, re-select the edge or line towards the opposite end (see below).



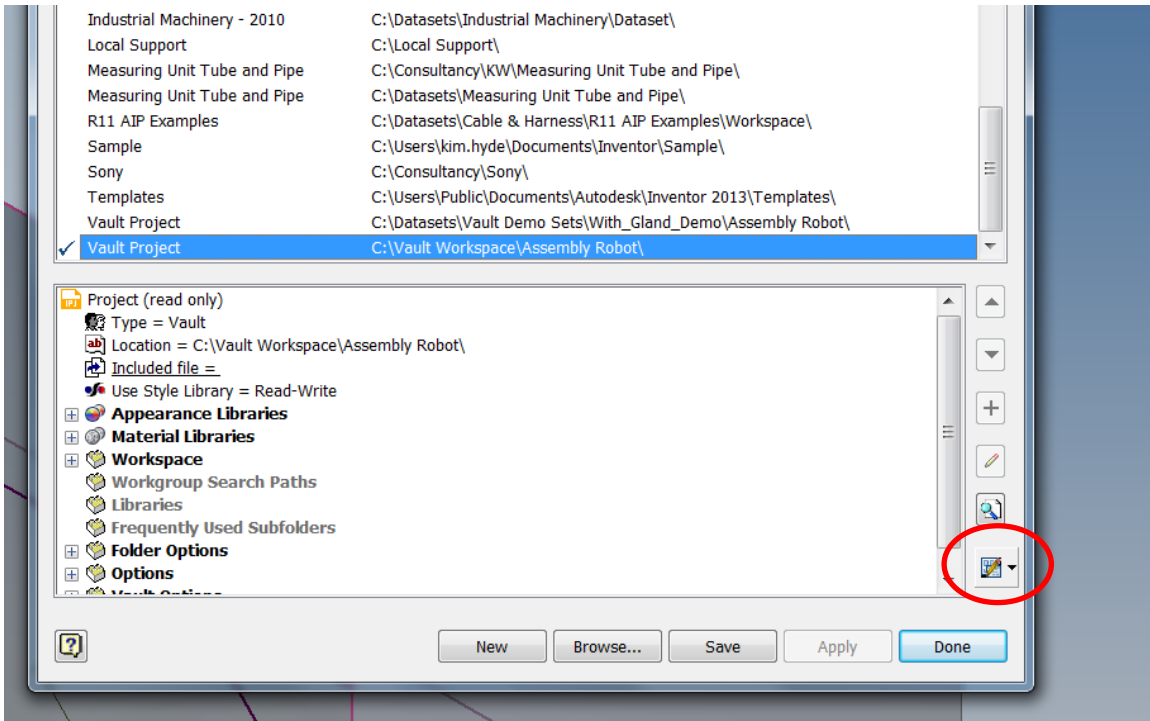
Inventor Frame Generator –Tips & Tricks (No.2)

For those wanting to use BSI frame standards such as BS4 (as shown above) it can be frustrating when this standard appears to be missing from the Standards selection from the drop-down.

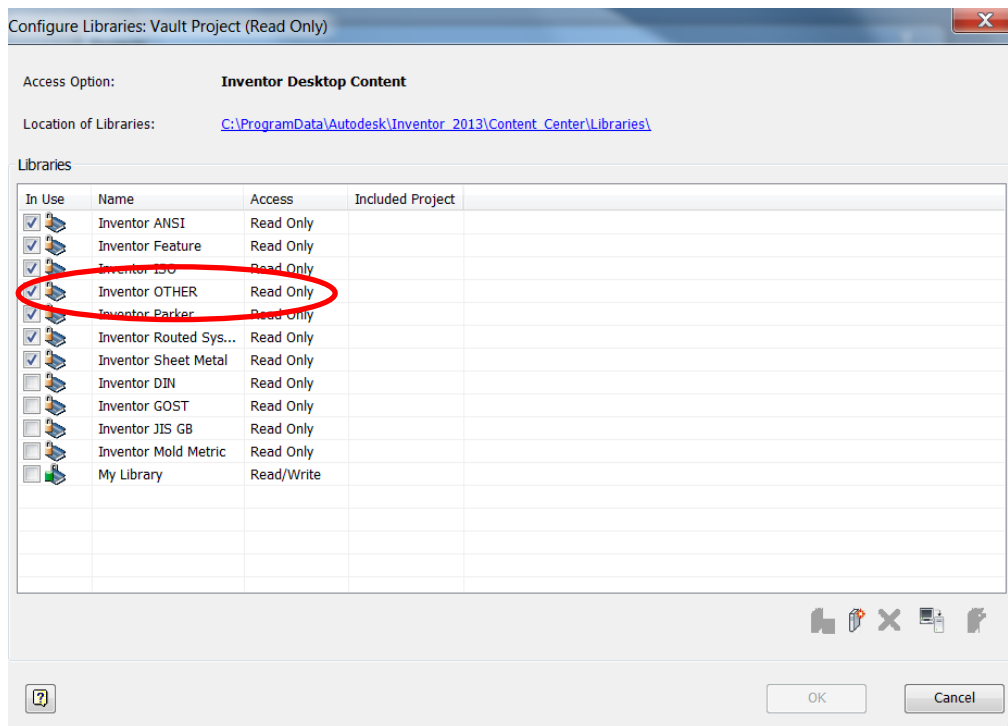
It is important to recognise that the selection relies on the current Content Centre settings and the libraries selected. (further information on the application settings and resources for creating Custom Libraries can be found at the end of this section).

The available libraries and those current can be managed via Inventor's project dialog and .ipj files.

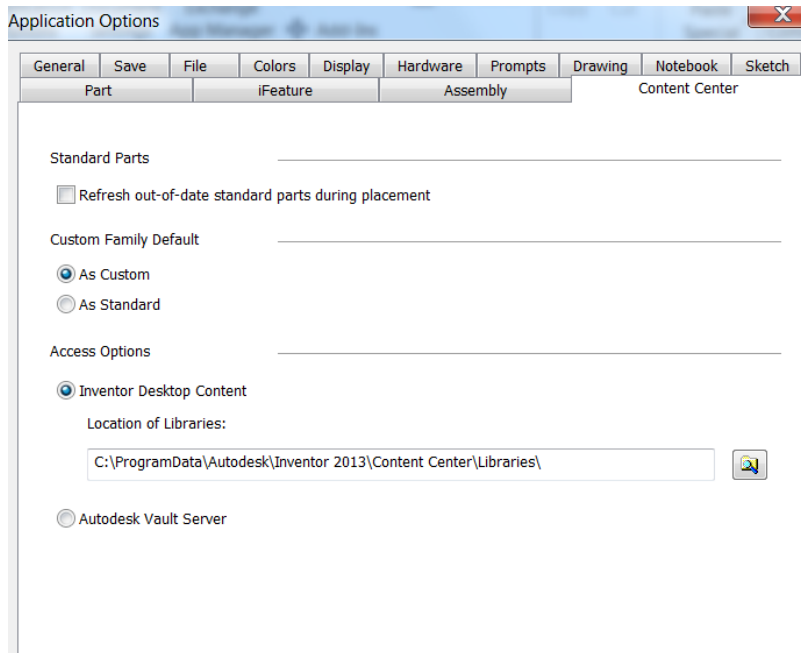
The following image shows the location of the button to select the library configuration from the Projects dialog.



The following image shows the available libraries (currently using Inventor Desktop Content). Note that the library 'Other' needs to be available and ticked for 'In Use' to access BSI / BS4.



Note that the application setting shown below indicates whether Inventor's 'Desktop Content' is selected (default), or Vault server based libraries.



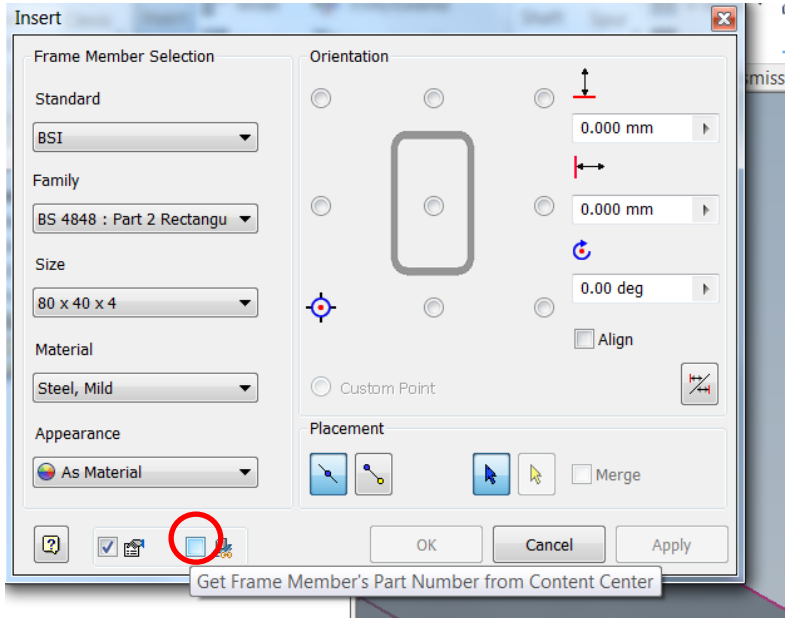
Users can also create customized frame members, more information can be found on the Web e.g. http://www.youtube.com/watch?v=fYFihrXLd_s

Inventor Frame Generator –Tips & Tricks (No.3)

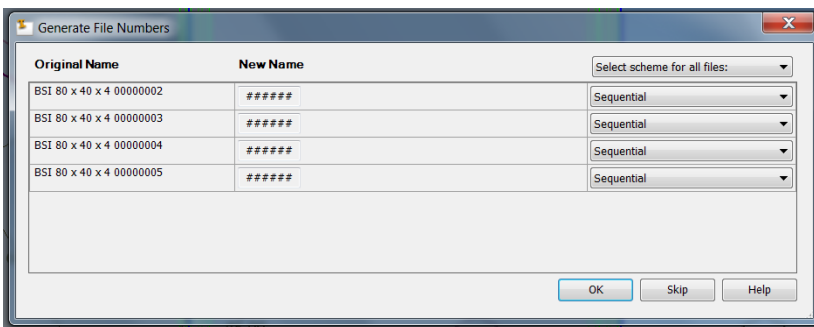
For those wanting to store their designs containing Frame Generator parts in Vault Workgroup, Vault Collaboration or Vault Professional where file auto-numbering is in operation, careful consideration is required. Where Items are to be assigned to the files it is common-place to use the default mapped setting that creates new Item numbers from the Inventor file 'Part Number' iProperty.

A small selection box situated at the Insert dialog which is able to switch between using the filename and part number being generated via the Content Centre or not. The user should clear the tick from the selection box to create files using the filename as the Inventor Part Number iProperty value.

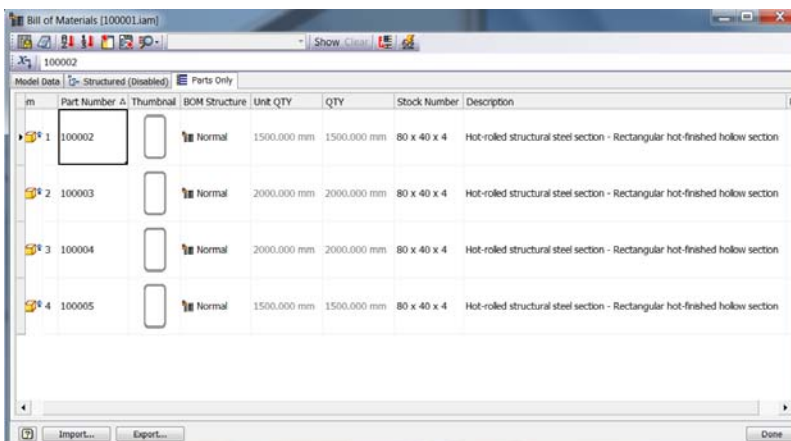
The following image shows the location for this selection (note that this box is usually ticked as default).



Result for files generated using a sequential numbering scheme:

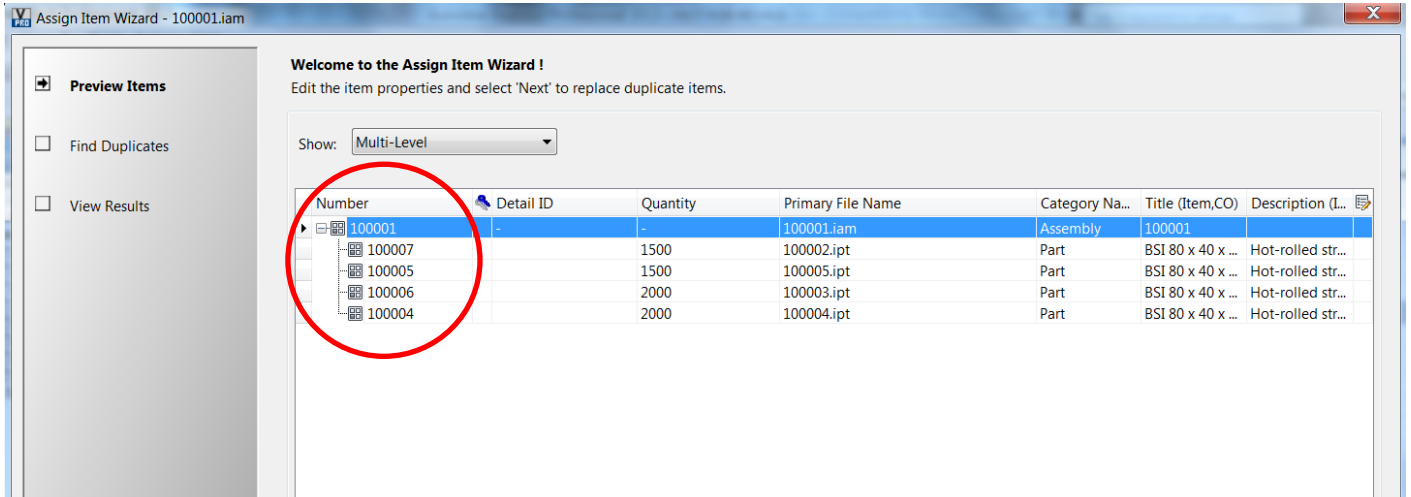


BOM showing values for Part Number fields:



And finally

The following image shows the Vault Professional Item Wizard creating Items with numbers generated as unique numbers from the vaulted file's Part Number iProperty:



K.Hyde
3-9-2012