


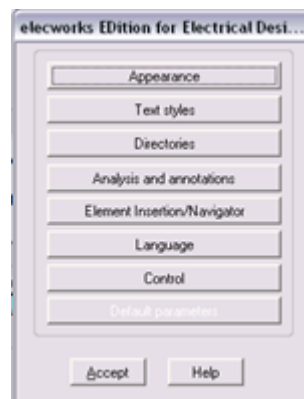
Creating a New User Login

All AutoCAD Electrical users

The default user name to access Electrical Designer is "ED". If you are working in a multi-user environment you may wish to setup different user names for each operator.

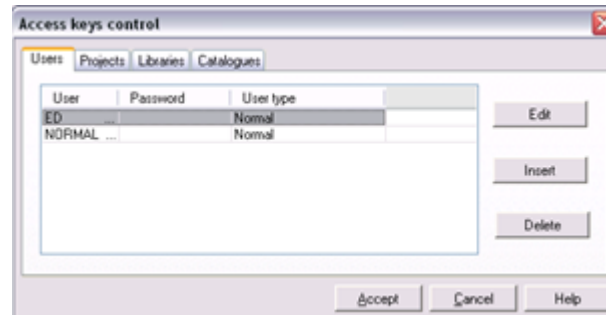
This is easily done:

In the Main Manager select the  *Configure*



Select Control

Highlight the user you wish to copy from e.g. ED



Select 



Enter the new user name and the associated password if you wish to password protect content created by that user

N.B. Ensure that you have removed any spaces from the password

Select 

Select 

The new user name and password may now be used for logging into Electrical *Designer*