

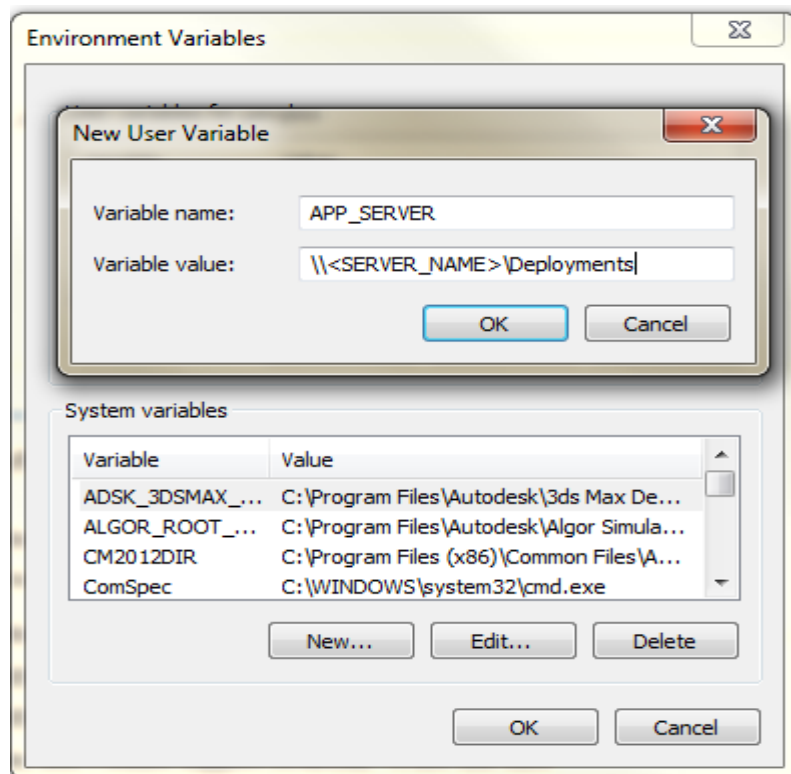
How To Make A Deployment Portable

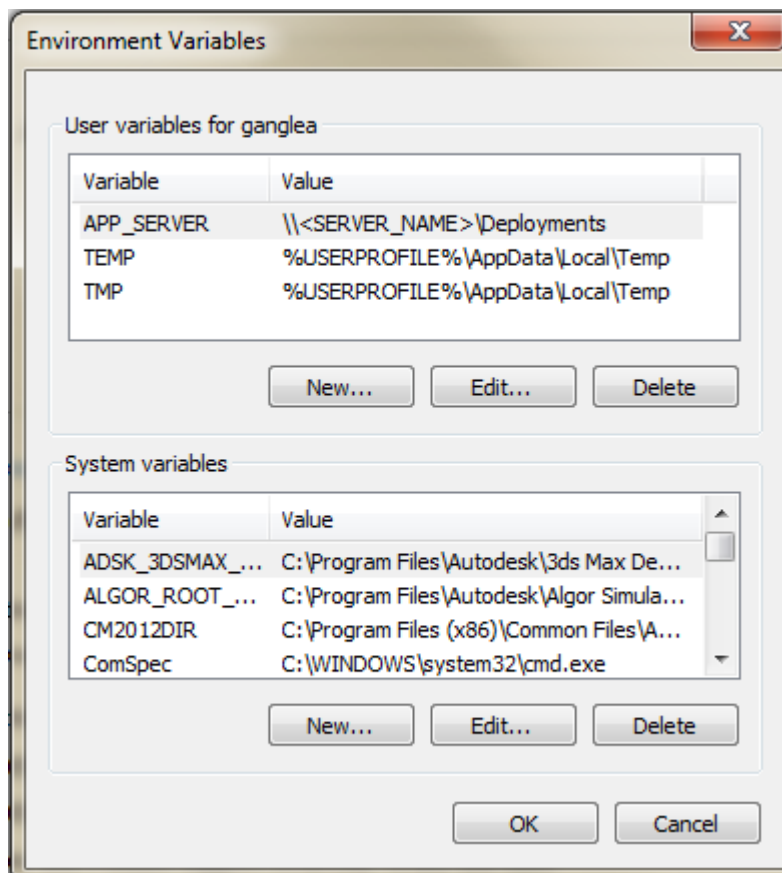
Making your Autodesk deployment available from other locations.

CAD / IT Managers

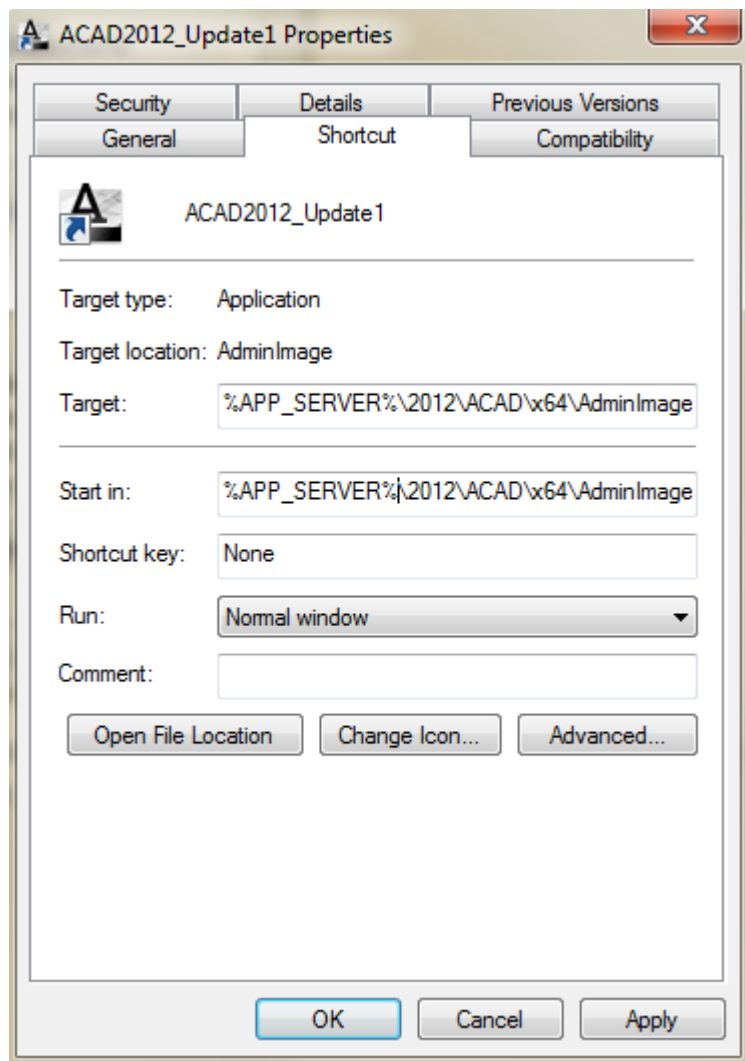
HOW TO MAKE A DEPLOYMENT PORTABLE:

1. Create an Environment Variable on the client workstations to point to the app server that will host the deployment AdminImage. (UNC paths are supported.) Many Admins will push this ENVAR out through a script across the network to reach all workstations. This is particularly helpful if there are different application servers being used in different GEO regions of a company.





2. In the deployment, right click on the following shortcuts and set the path to the environment variable (in this example, APP_SERVER is our ENVAR) for the App Server path. Make sure to update both the main deployment shortcut as well as the shortcut in the TOOLS directory (Create & Modify a deployment):



3. Next, in the main INI file for the deployment, locate the section:

```
#===== Global MSI Properties

ADMIN_IMAGE_LOCATION=\\<SERVER_NAME>\2012\ACAD\x64

DEPLOYMENT_PLATFORM=x64

DEPLOYMENT_MODE=MINIMAL

NETWORK_LOG_PATH=\\<SERVER_NAME>\2012\ACAD\x64\Log\

NETWORK_LOGGING=YES

SETUP_LANGUAGES=en-us
```

Change this to:

```
#===== Global MSI Properties
```

```
ADMIN_IMAGE_LOCATION=%APP_SERVER%\2012\ACAD\x64
```

```
DEPLOYMENT_PLATFORM=x64
```

```
DEPLOYMENT_MODE=MINIMAL
```

```
NETWORK_LOG_PATH=%APP_SERVER%\2012\ACAD\x64\Log\
```

```
NETWORK_LOGGING=YES
```

```
SETUP_LANGUAGES=en-us
```

4. It is often helpful after these changes to launch the Create & Modify a deployment shortcut in the TOOLS directory, and run this wizard once after the deployment is located on the new server to assure that any other paths will then be set to the ENVIRONMENT variable (in this example: %APP_SERVER%).