

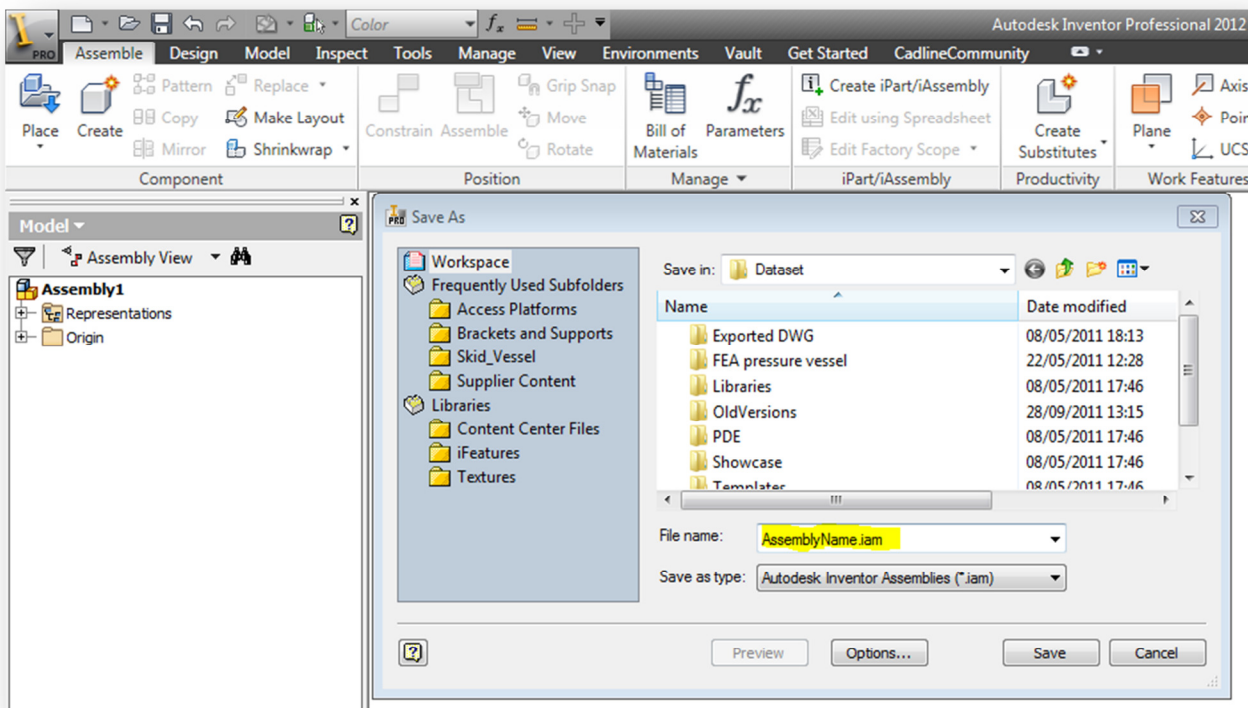
Autodesk Inventor Tube and Pipe – Custom Template Authoring

This is step by step guide to help you create a custom Tube and Pipe template, or Company standard template for Tube and Pipe. Note that this is designed for Advanced users with an understanding of projects and design data MS2011072

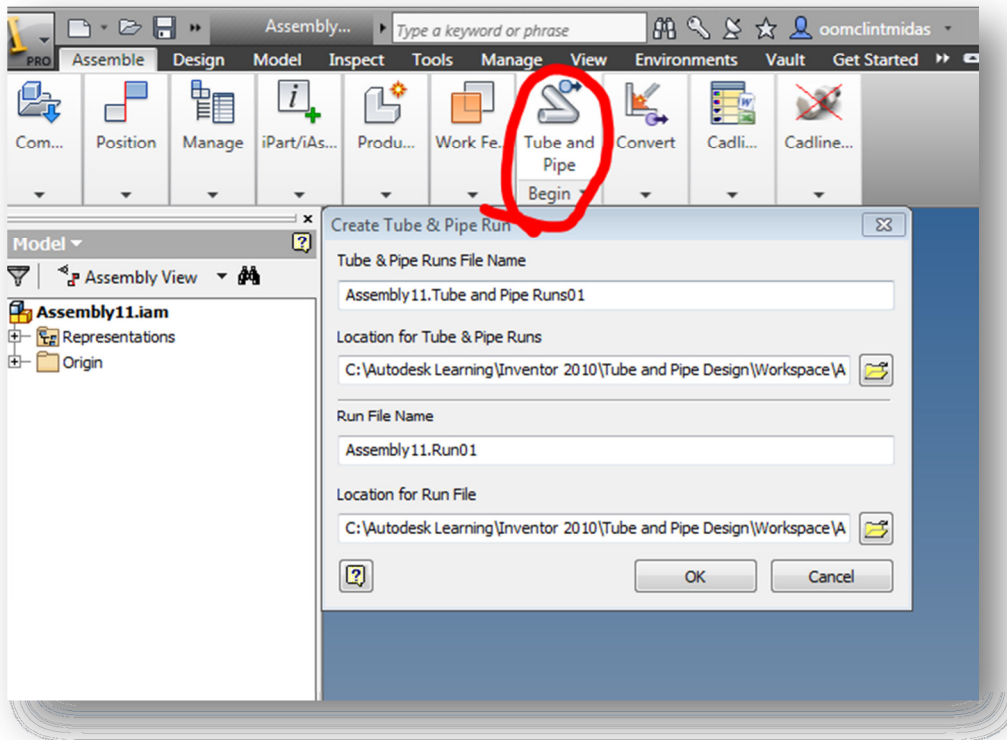
Advanced CAD users, CAD Managers, System Administrators

For advice on shared design environments, please see the notes at the end.

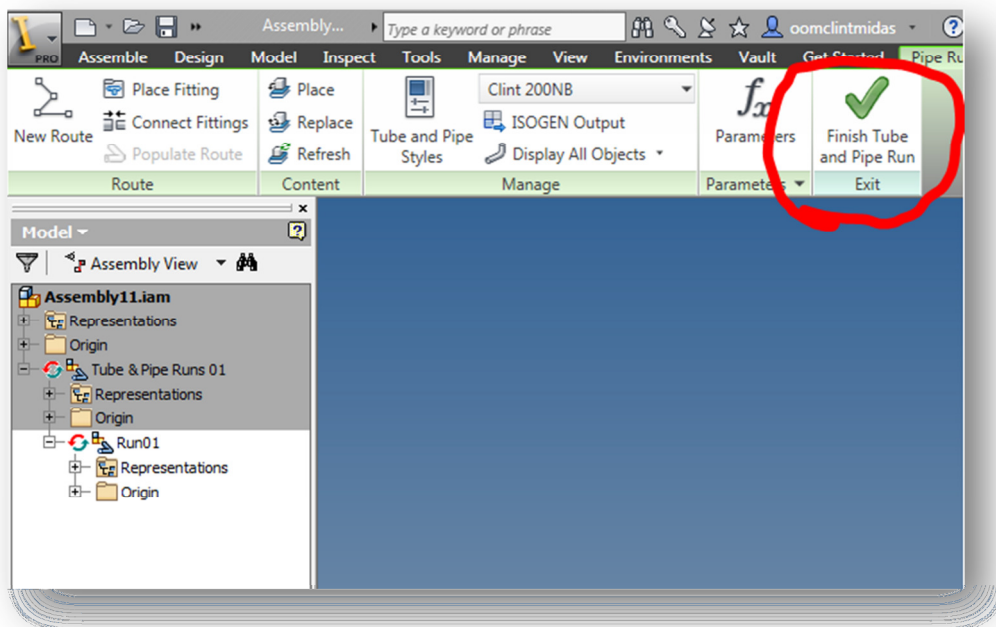
To get started with creating your own Piping Standards, continue as described below, it is advised that you first read through this tutorial, before attempting to modify your design data. It is also advised that you create a backup copy of your current design data before proceeding, Tube and pipe specific design data is kept in the following location by default **C:\Users\Public\Documents\Autodesk\Inventor XXX\Design Data\Tube & Pipe** in shared environments, this location could be different, please refer to your project file.



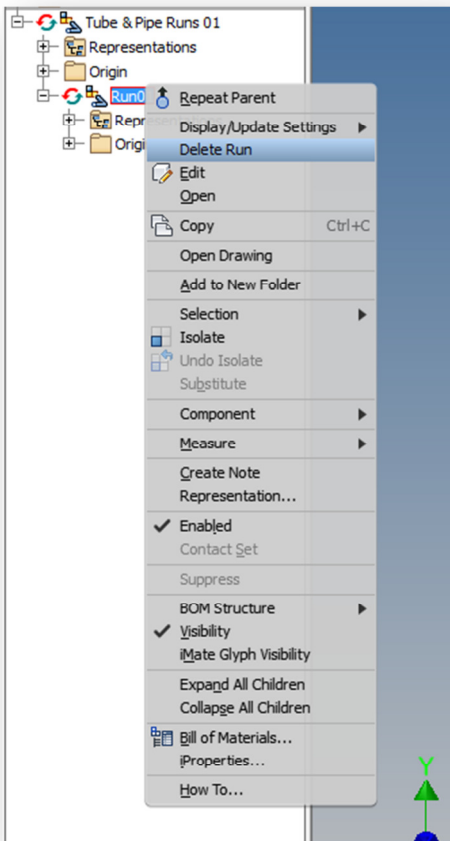
Create a new blank Assembly, and save it. (For the purpose of this exercise, call it **AssemblyName.ipt**)



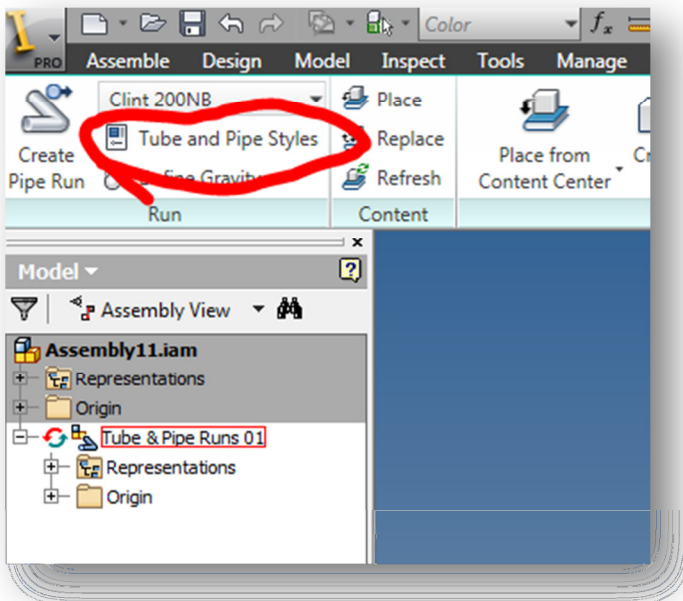
In the newly saved Assembly, click on **Tube and Pipe**



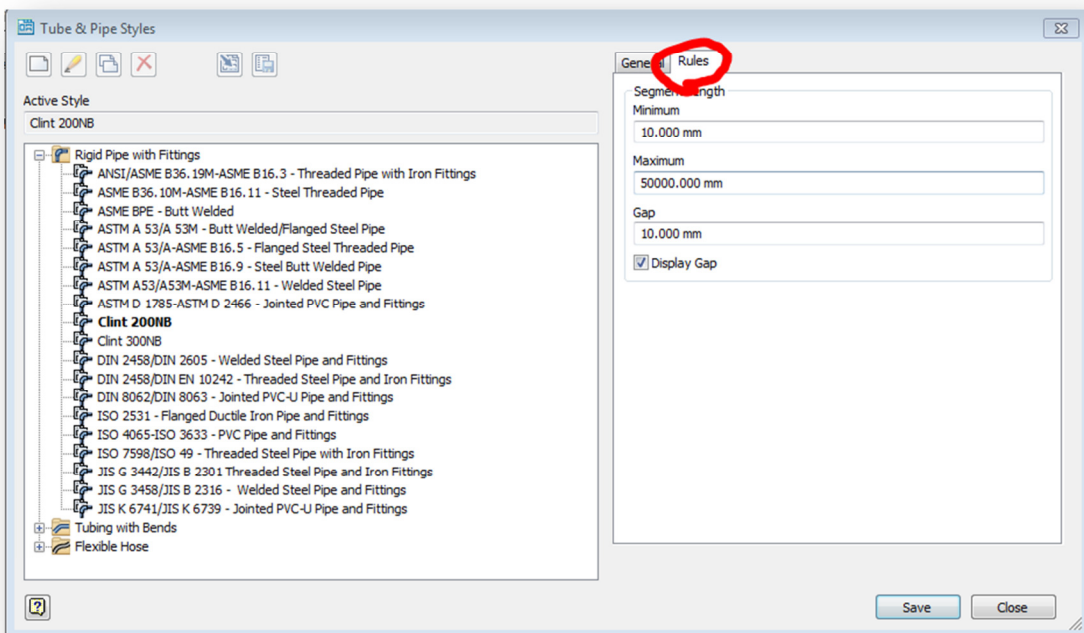
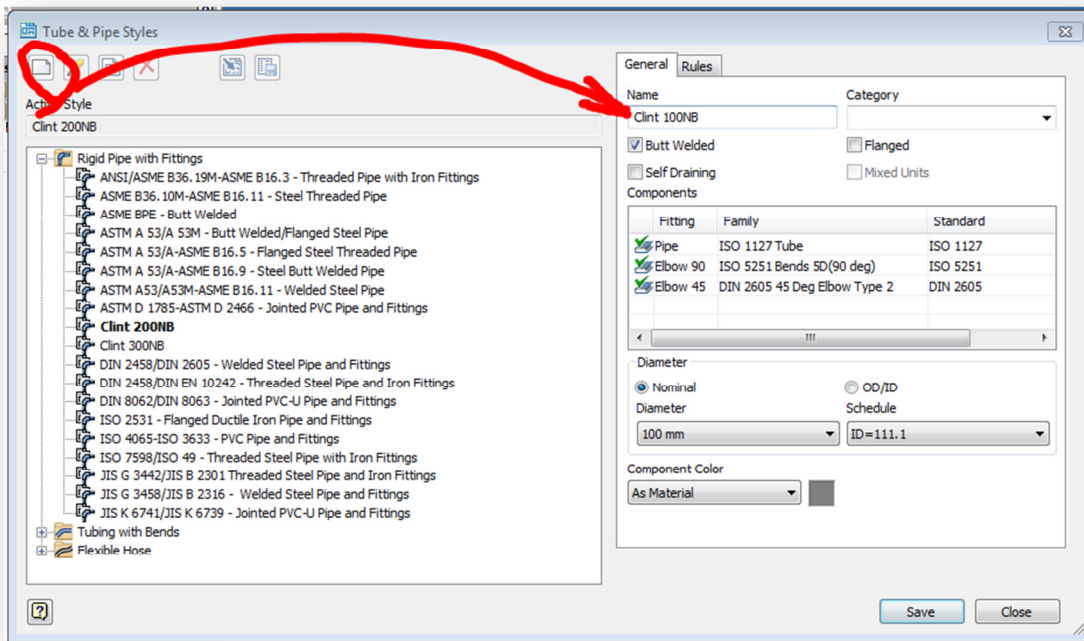
Then Click **Finish** twice



Now **Delete Run01** in your browser (as shown above)



To modify your styles, click on the **Tube and Pipe Styles** Button

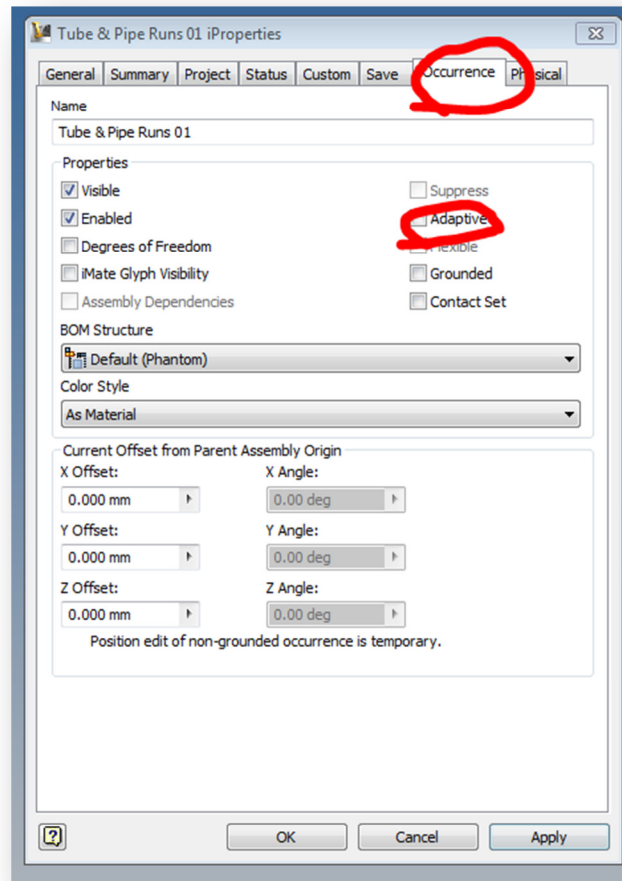
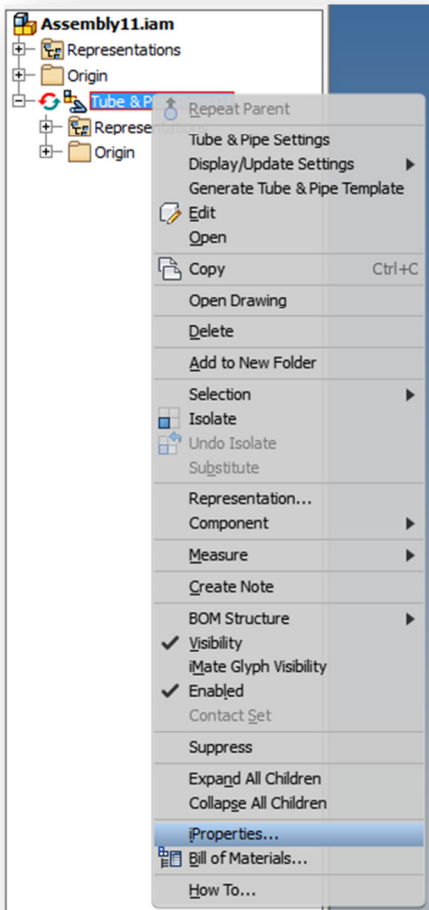


Create the new pipe standards as required, remember to fill in the required rules

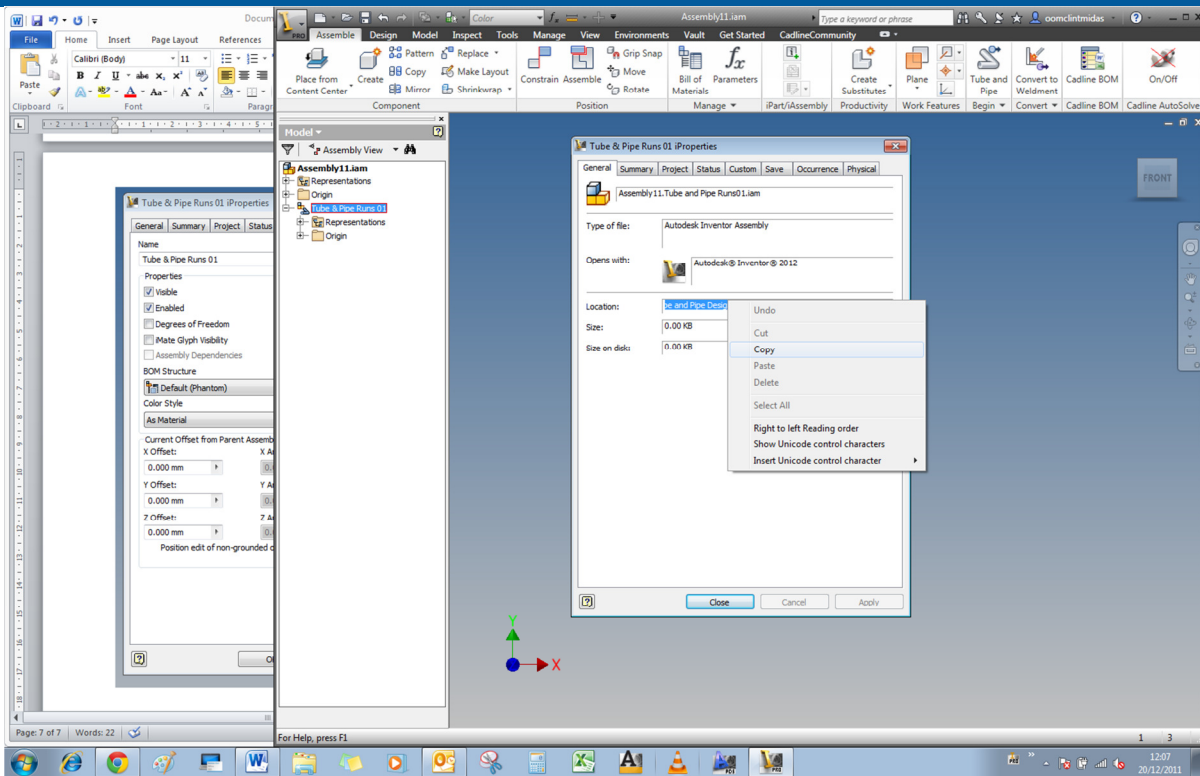
Click on **Save**

Finish Tube and Pipe

Right Click on the **Tube and Pipe Runs** in the browser, click on **iProperties**. In the **iProperties**, click on the Occurrence Tab, and unselect **Adaptive** (as shown below)

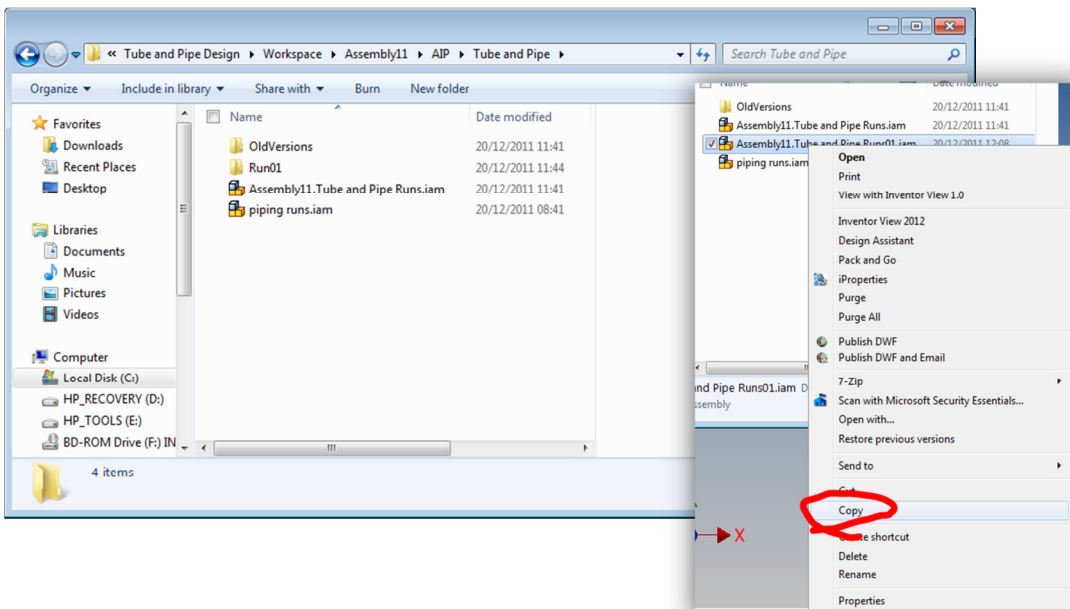


Click **Apply**



On the General Tab in **iProperties**, highlight the Location information and copy it to your clipboard (as shown above)

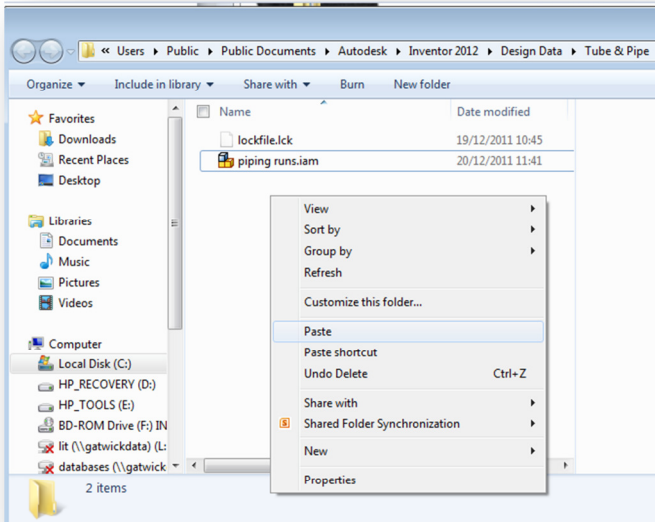
Browse to this location in Windows Explorer



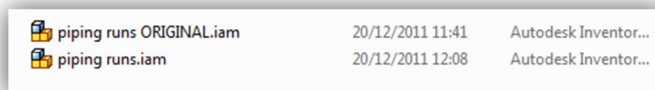
Copy the file called **AssemblyName.Tube and Pipe Runs01.iam** to your clipboard (**AssemblyName** is the name you gave the original Assembly file)

Navigate to **C:\Users\Public\Documents\Autodesk\Inventor XXX\Design Data\Tube & Pipe***

*If your project file accesses your design data from another location, browse there. A common set of Design data should be used across design teams to ensure enforcement of standards

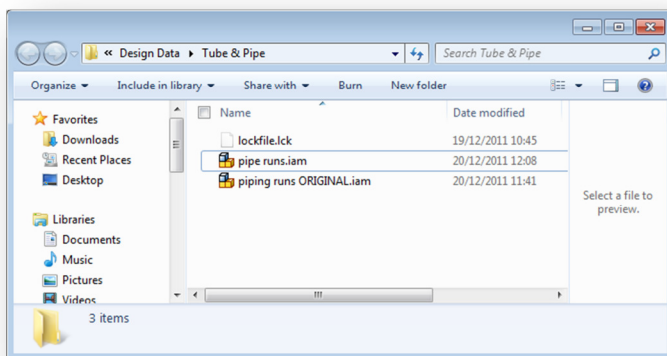


Paste **AssemblyName.Tube and Pipe Runs01.iam** into this folder



Rename the **piping runs.iam** to **piping runs ORIGINAL.iam** (this keeps a backup of the original settings)

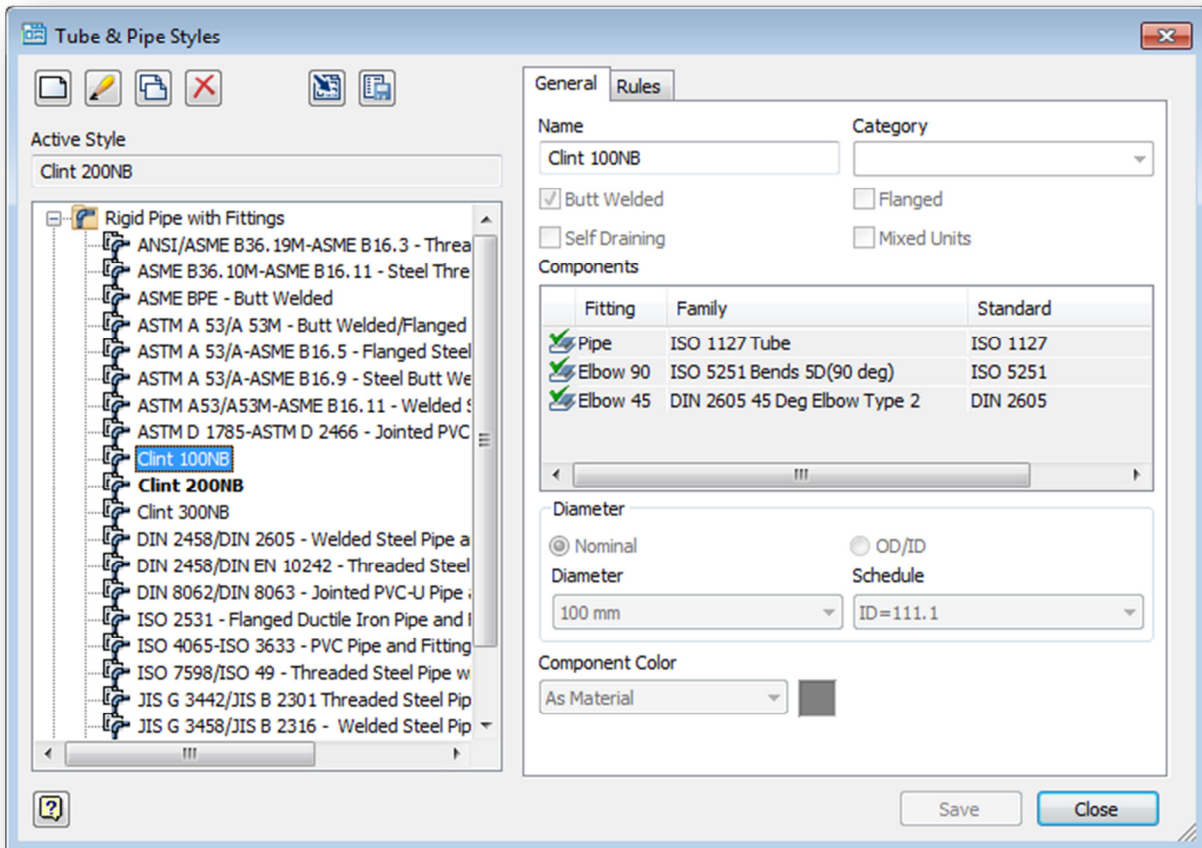
Then rename the **AssemblyName.Tube and Pipe Runs01.iam** to **piping runs.iam**



Close the file in Inventor.

You have now updated your design data for Tube and Pipe. All new Assemblies will reference the changes that you have made.

To test this, create a **New Assembly**, the **Save** it and **Activate a pipe run**



You will see that the standards you have created are now available (Clint 100NB and Clint 200NB are the names I gave my new standards)

Note:

In this Tutorial, you change your design data, not your Assembly template file. In order for other users to access this data, they will need to have access to the same design data. It is advised that you keep your design data in a central environment if you are in a shared design environment. Design data is shared through your project file settings.