

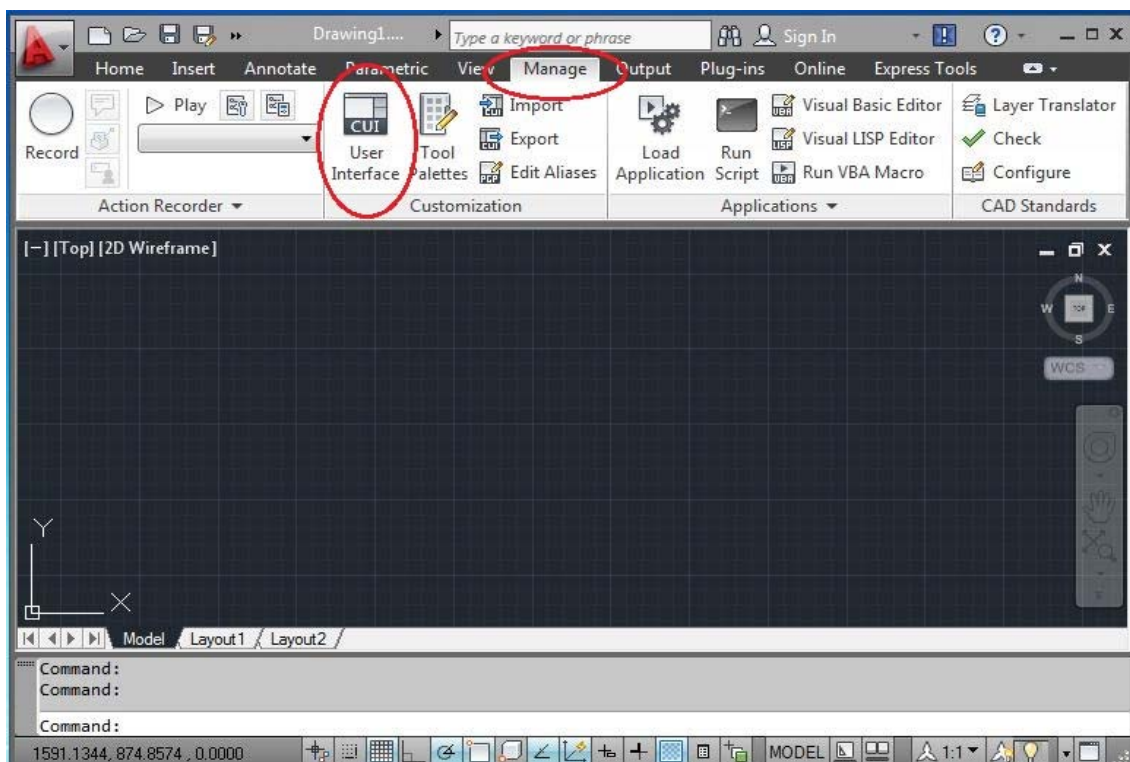
# Manually Migrating Customize User Interface

How to manually migrate previous menus, toolbars, workspaces in to your new interface.

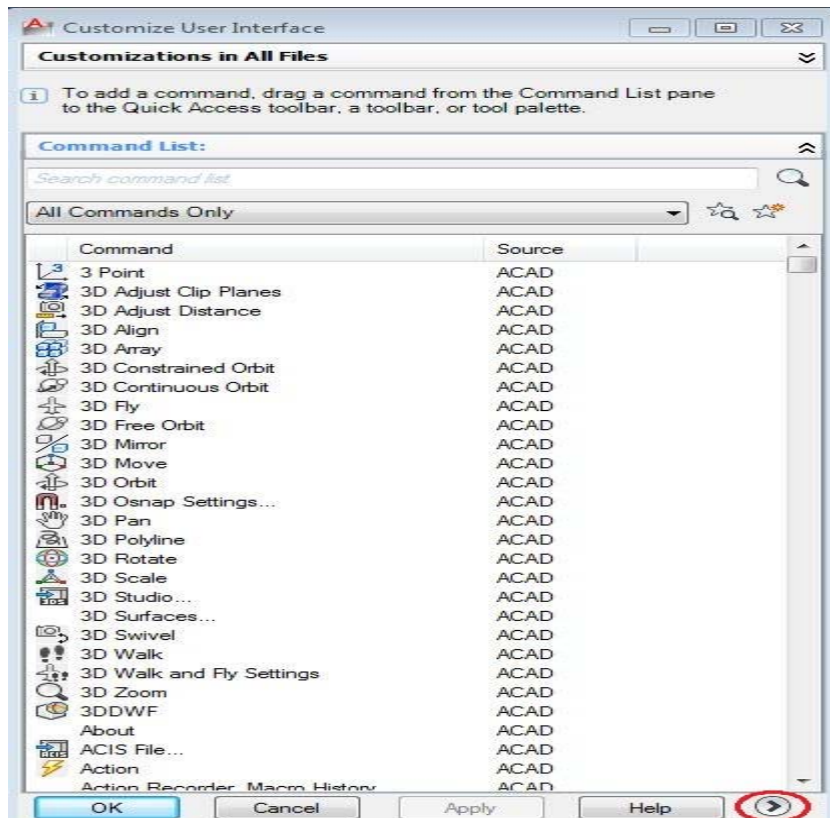
CAD Users

We have found that by using the migration tools for AutoCAD can change the way the new interface should appear, causing loss of new features. If there are any toolbars, menus or workspaces that you wish to include in the new version then we recommend manually transferring:

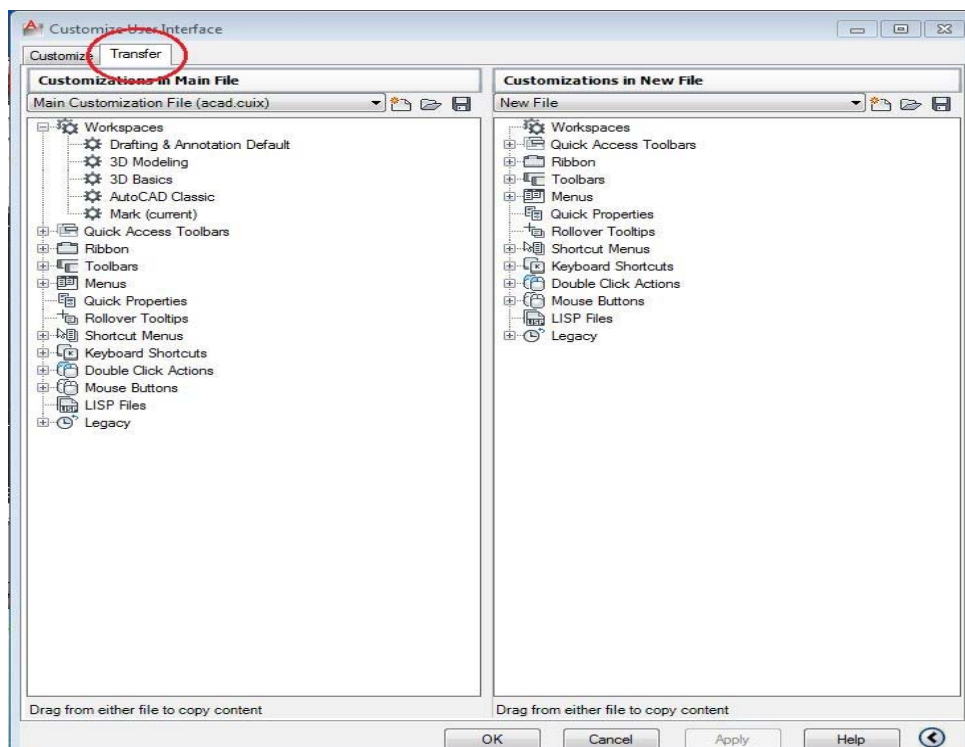
- From within AutoCAD, from the Manage Tab, select CUI User Interface



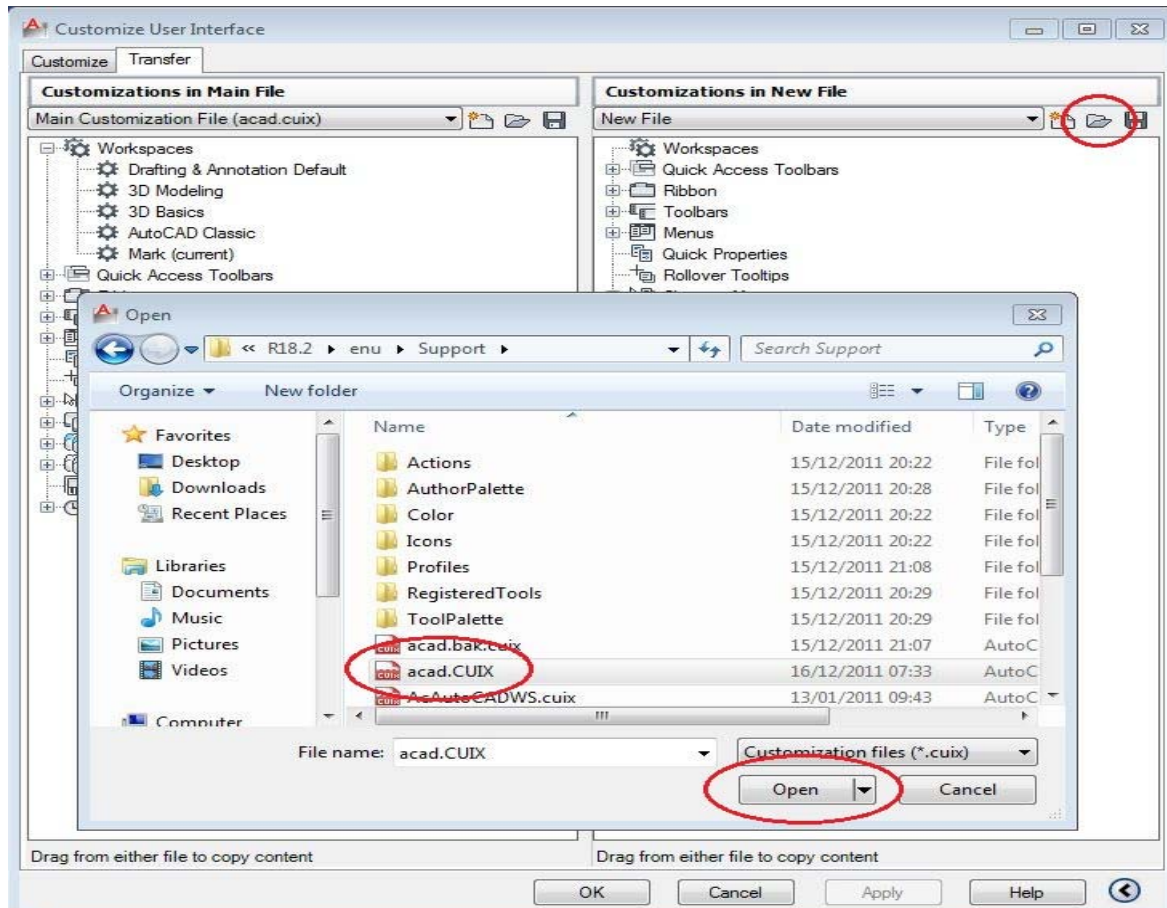
- Select the arrow to expand the Customize User Interface dialog



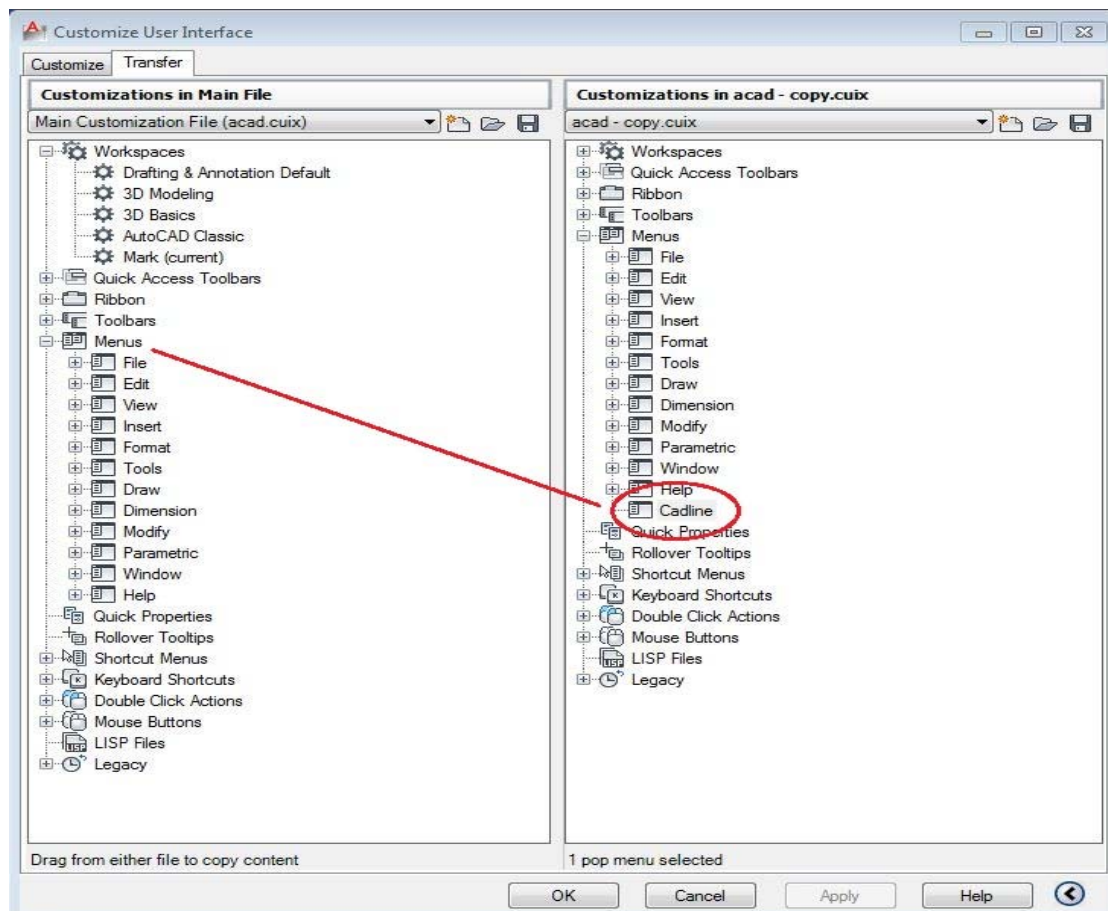
- Select the Transfer Tab



- The left hand window pane shows the current Customization File. The right hand window pane is where you can open an existing file ready for transfer. On the right hand window, select open and browse to your existing menu file



- Once open you can expand the categories and simply drag them across to the current file in their corresponding category



- Once completed, select Apply and OK to return back to the AutoCAD screen. Any menus, toolbars, workspaces will now be available to you.