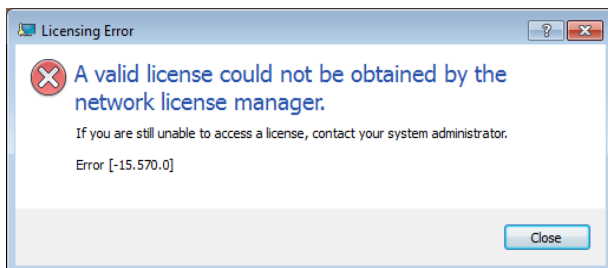


Server 2008 and License Manager

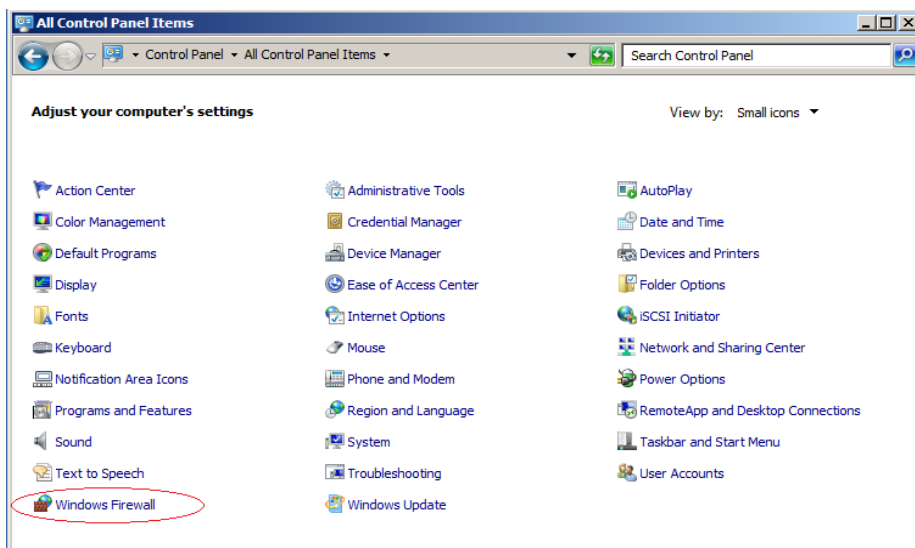
All Autodesk Users

You are running the Autodesk Network License Manager on Windows Server 2008 and the client receives the error:

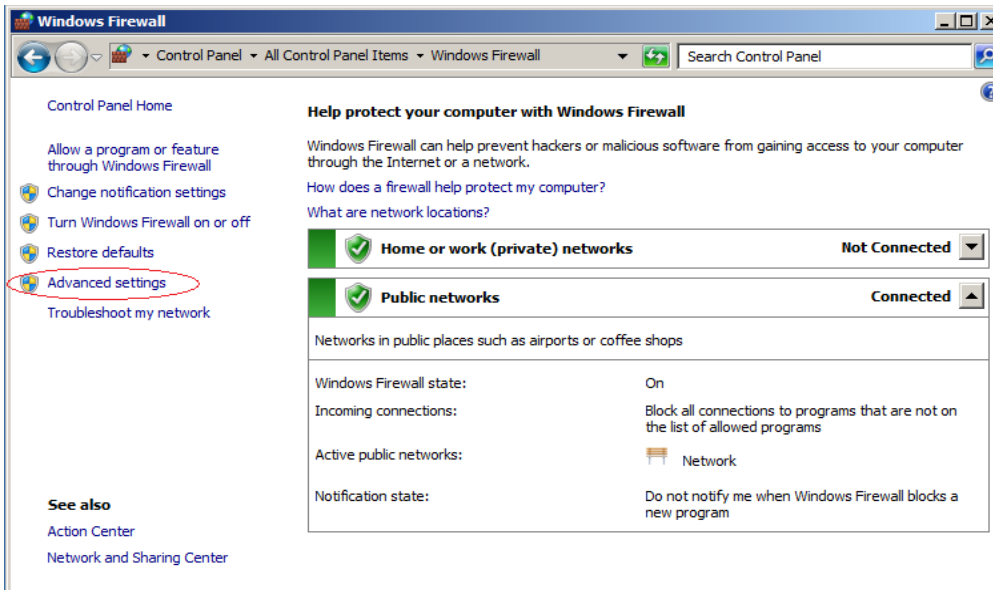


With the Windows firewall enabled you will need to amend to allow the required TCP/IP ports through. Follow the steps below:

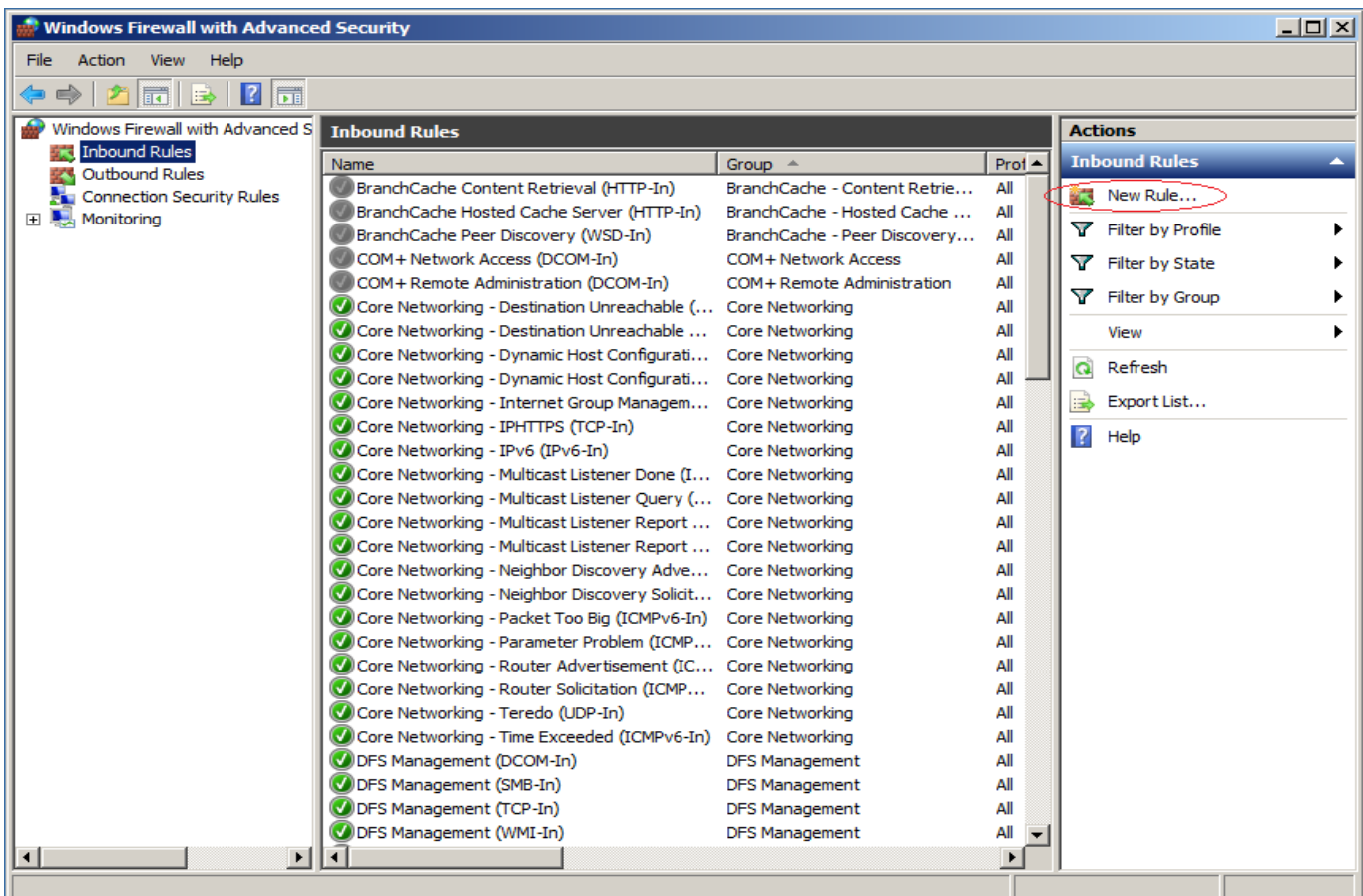
1. From the control panel, open the Windows Firewall applet:



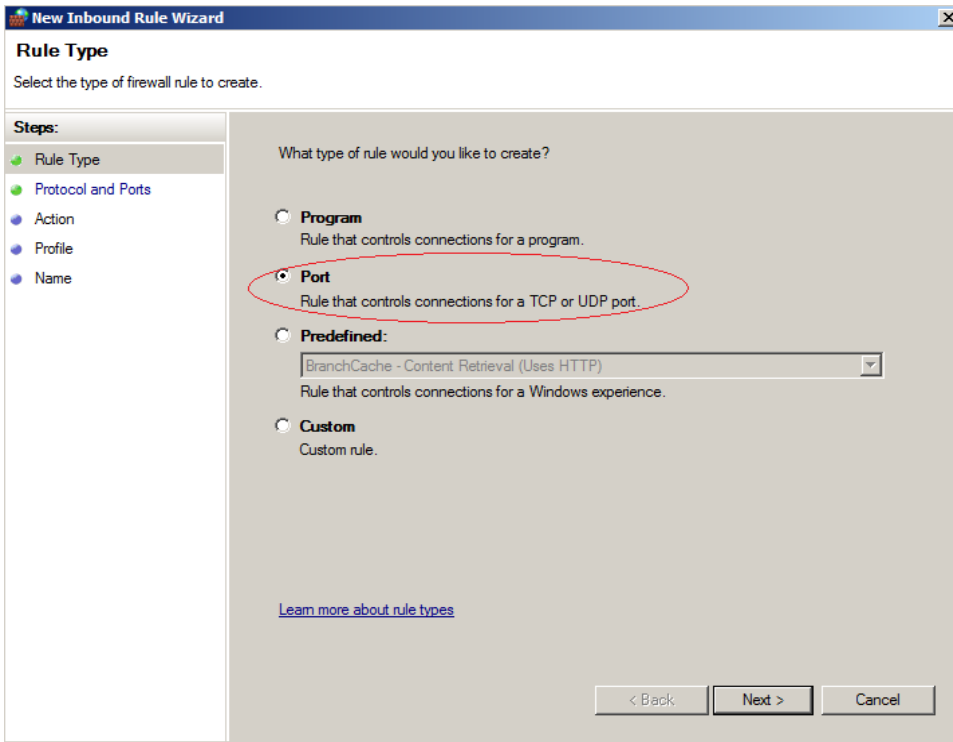
2. Go to the advanced settings section:



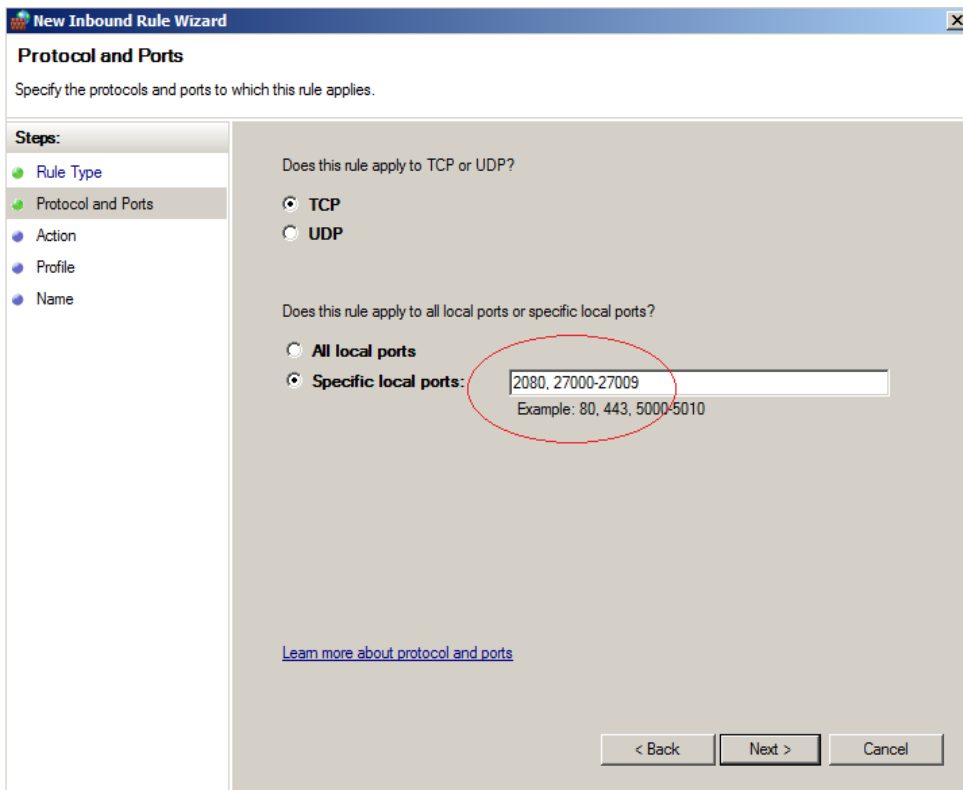
3. On the Inbound rules, select New Rule:



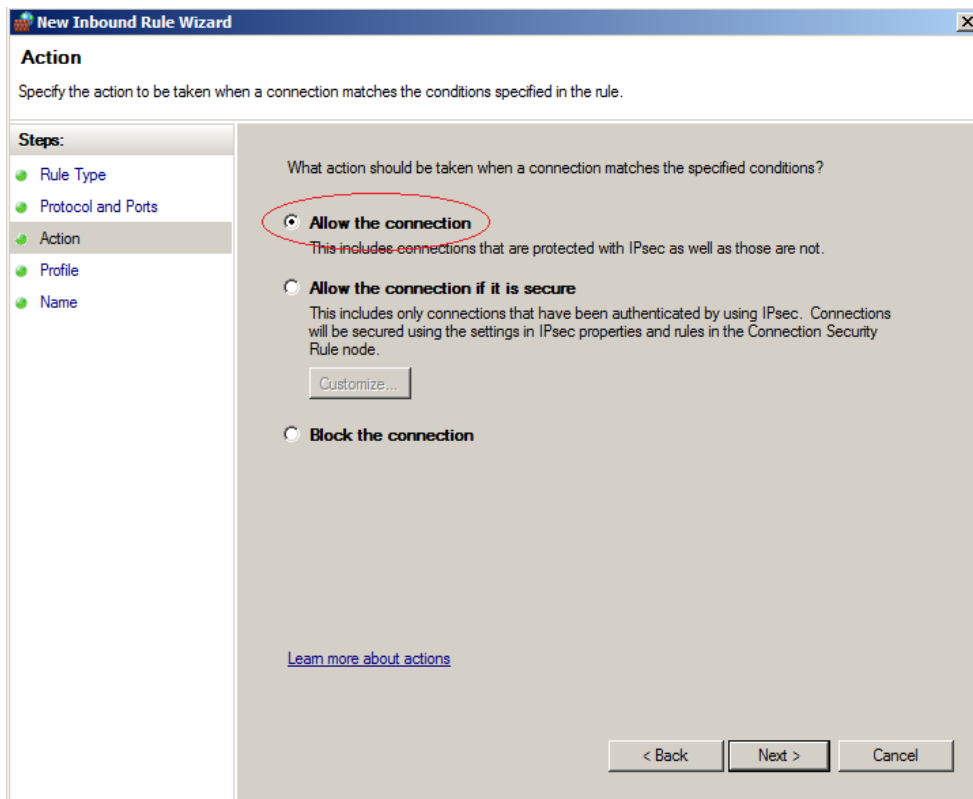
4. Select the Port rule:



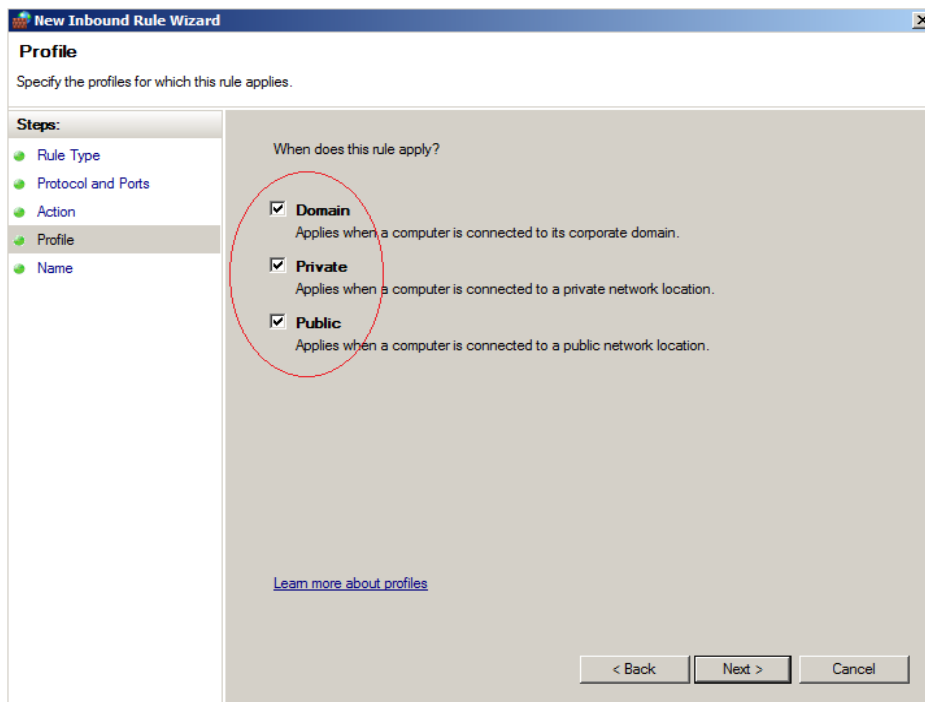
5. In the Specific Local Ports add the values: 2080, 27000-27009:



6. Select Allow The Connection:



7. Apply the rule to the firewall profiles:



8. Provide the name for the new rule:

New Inbound Rule Wizard

Name
Specify the name and description of this rule.

Steps:

- Rule Type
- Protocol and Ports
- Action
- Profile
- Name

Name:

Description (optional):

< Back Finish Cancel