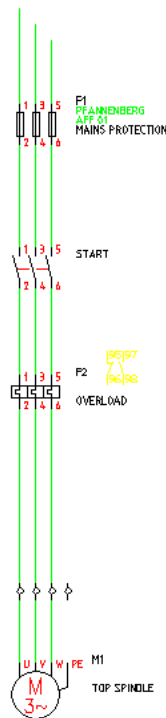


Saving a Circuit for Reuse

All Electrical Designer Users

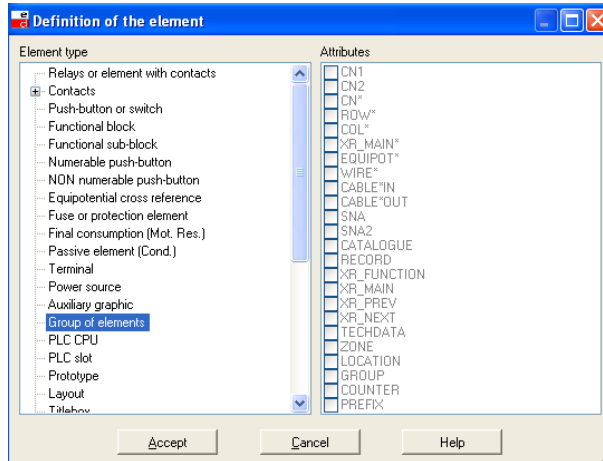
Following on from last month's Tips and Tricks where we showed saving a symbol on the fly from within your schematic, this month's Tips and Tricks advises how to save a circuit on the fly for reuse.

As an example, we have the following circuit where we would like to save the circuit into the icon menu for either a future use within the current project or different project.



Select  *Auto New Element* from the *Various* toolbar

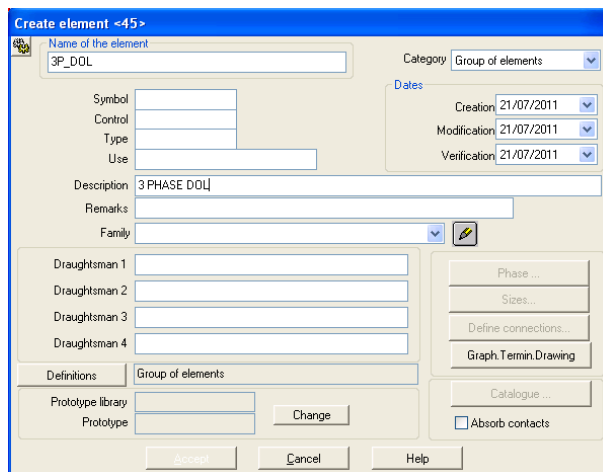
Define the type of component



Select *Group of Elements*

Select 

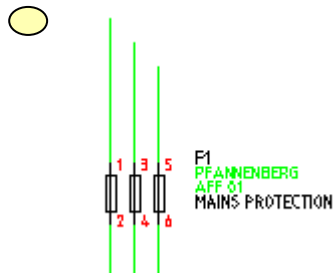
Fill in the element record card



Select

Accept

Insertion point: first connection at the wire intersection



Window around the entire circuit and right click. If you incorrectly select some objects or miss some objects in your first selection you can use *A* to add and *R* for remove.

Press *Return* to accept the objects selection or *right click*.

The objects will disappear from the circuit.

Type *UNDO* for the circuit to reappear within the schematic. The circuit is now in the icon menu under *Group of Elements*.