

Filtering Your Drawings for a Specific Script

All Electrical Designer Users

Some scripts have commands which are for schematic drawings only such as the CLEANUP.SCR.

This means that the script would halt and prompt the user to select OK when opening a Data or Layout drawing as an example.

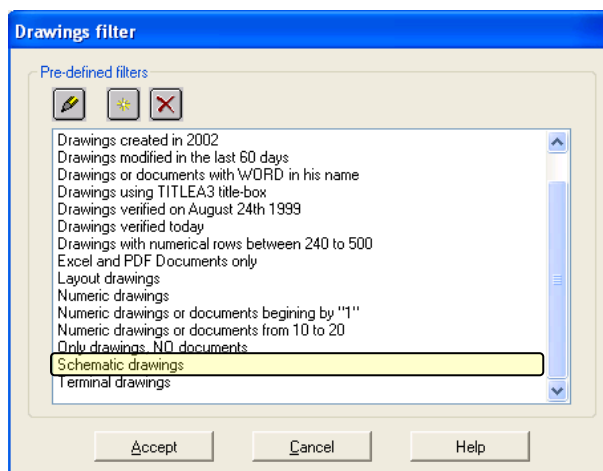
The CLEANUP.SCR script as an example contains the command APO which updates the dots on the wire intersections and this would halt the script on a Data drawing.

To filter your drawings based on type:

From the *Main Manager*, select the *Drawings* tab

Select  *Filter*

The following dialogue will be shown:



Select *Schematic drawings* (as highlighted)

Select

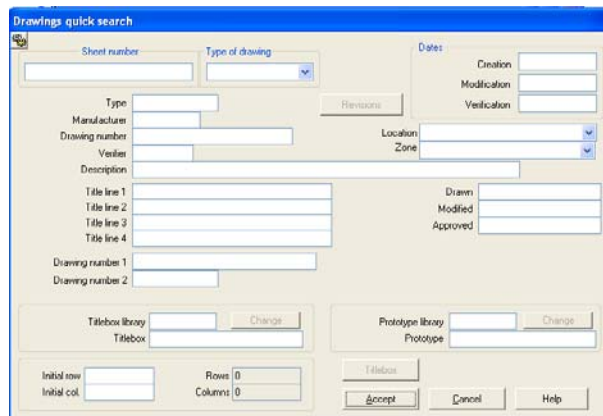
The drawings displayed in the Drawings Browser will now only be schematic drawings.

To clear the filter, just select *Filter*

Quick Search Filter

You can also use the command  *Quick Search*

This will bring up the drawing record card



...where you can type any keyword into any of the active fields or indeed multiple keyword searches.

Select

The drawings displayed in the Drawings Browser will now only be the selected drawings.

To clear the filter, just select *Filter*.