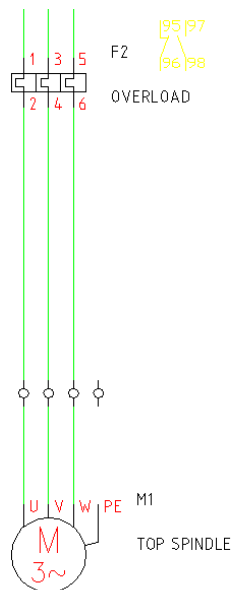


# Creating a New Symbol on the Fly

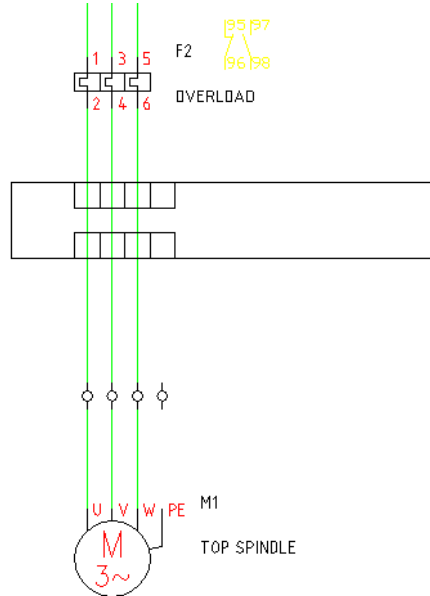
All Electrical Designer Users


When you are designing a circuit, you may wish to create a new symbol or black box type device around existing circuitry. Electrical Designer has the functionality to help you!

As an example, we have the following circuit where we would like to create a variable speed drive around the existing circuitry.



Draw a rectangle on the circuit and the graphics that represent the symbol

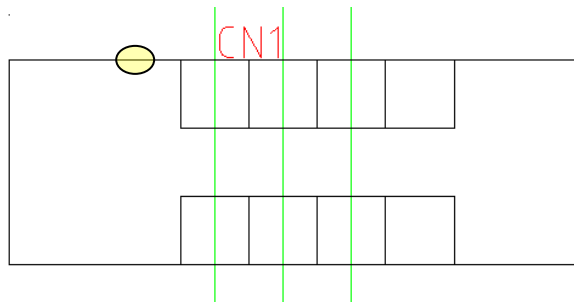


From the *ED: Make Elements* toolbar, select  *Define Pins*

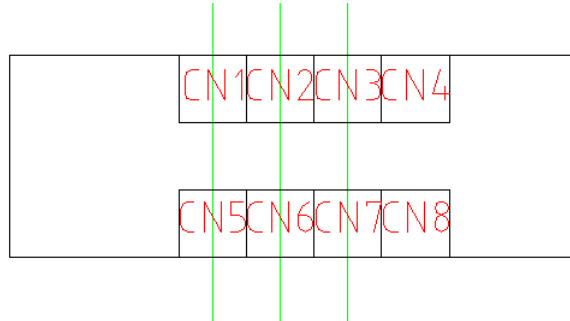
Value of the pin: 1 (this is the terminal number you wish to have)

Number of order of pin: 1 (this is the connection order ED analyses)

Insert the first connection at the wire intersection



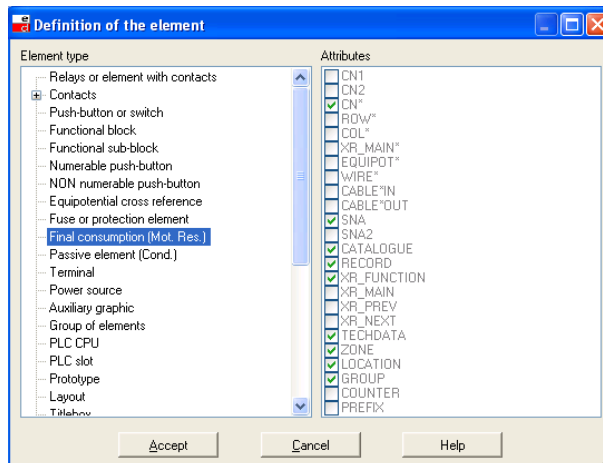
Repeat until all connections points have been inserted sequentially incrementing the order of pins in turn



You can use AutoCAD Properties command to change the orientation, the justification point of the text and the position. However the justification of the attribute MUST BE within 2.49mm away from where the wire will be cut i.e. line break

Select  *Auto New Element* from the *Various* toolbar

Define the type of component



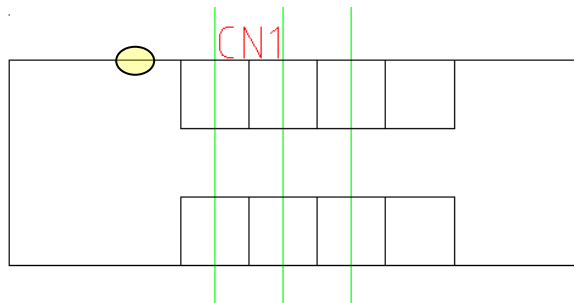
Select *Final Consumption* in this example

Select

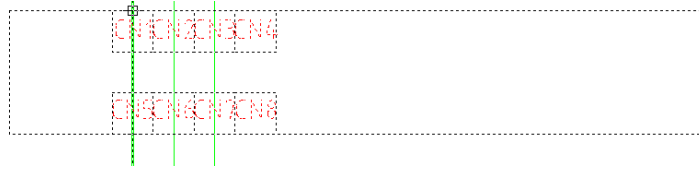
Fill in the element record card

Select

Insertion point: first connection at the wire intersection



Window around the objects as shown and right click



The objects will disappear from the circuit

The symbol can now be finished off in the Element Browser

Select  Definition Wizard to finish the symbol off

If you wish to change the connection pin numbers, use DDATTE and alter the VALUE. Do not alter the TAG.