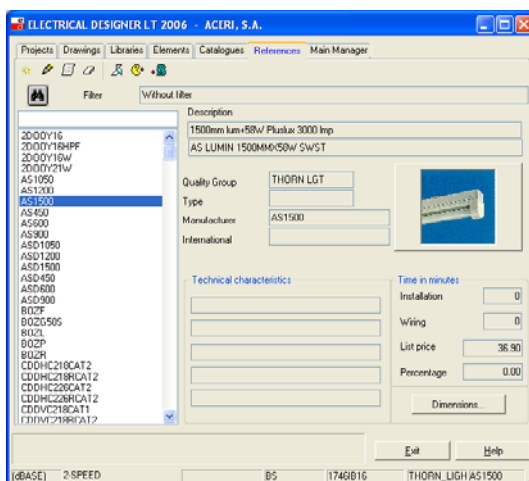


Attaching Image Files to a Catalogue & Catalogue References

All Electrical Designer Users

Electrical Designer has the ability to store associated image files with the extension of either bmp or jpg to the catalogue and catalogue references. This aids selection of the correct components.

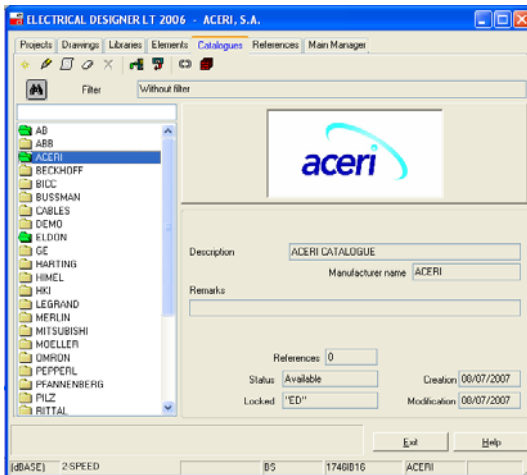


In this example, a blank catalogue called ACERI has been created using the *New Catalogue* icon.

Using Windows Explorer copy a company logo image file (bmp or jpg ONLY) into the new catalogue directory e.g. C:\ED2006\CA\ACERI

Right click over the file and rename your company logo image file to be **CATALOG.BMP** or **CATALOG.JPG**

You should now be able to preview the image file in Electrical Designer.

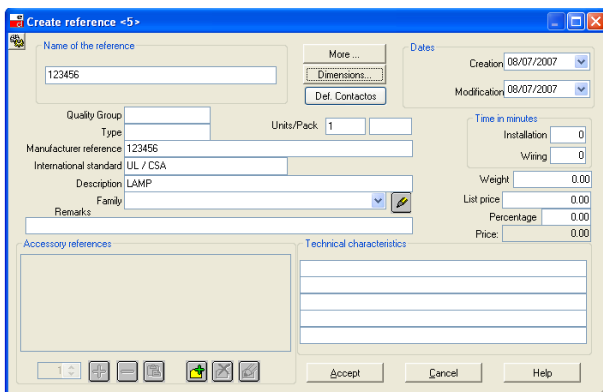


The image file associated to the specific reference can either be an identical name to the reference (with the extension of jpg or bmp) or can be an image file used for multiple references.

If the image file is used for a single reference, this image file will have an identical file name (without extension) as the reference.

E.g. reference 123456 would have an image file of 123456.bmp or jpg.

In this instance, Select *Dimensions* and the *Bitmap* entry will be empty.

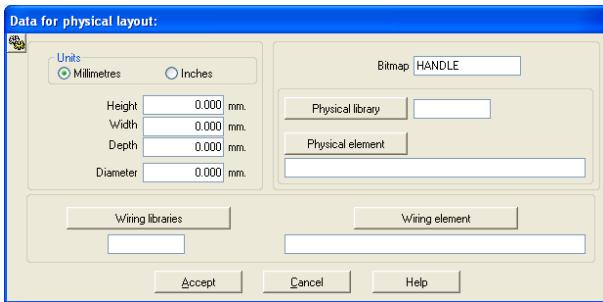


The image file will be stored in the same directory e.g. C:\ED2006\CA\ACERI

If the image file is used for multiple references, then the image file has to be specified in the *Edit Reference* Dialogue (without extension).

E.g. reference 654321 can have an image file of "any name".bmp or jpg.

In this instance, Select *Dimensions* and the *Bitmap* entry has a value e.g. HANDLE (no file extension).



Both methods will then show the associated image files.

