

DWF Intelligent Hyperlinked Drawings

All Electrical Designer Users

AutoCAD and therefore Electrical Designer have had the ability to create a DWF or DWFx for some time. However, the DWF(x) has always been effectively similar to a PDF i.e. non intelligent.

New functionality in ED2010 enables you to create the intelligent links between signal and destination wires, cross-referencing between parent and child components and also cross-referencing between schematic, terminal diagrams and assembly drawings on an Electrical Designer project basis as either a single or multi-sheet DWF(s).

This enables both internal staff and customers to navigate intelligently around designs in the popular DWF file format without the requirement of Electrical Designer. This can either be done using free of charge Autodesk Design Review (DWF).

Highlight the project you wish to create the hyperlinked DWF(x) in the Electrical Designer projects manager.

Select the *Drawings* tab

Select  *Process Drawings*

Select *Zoom Extents*

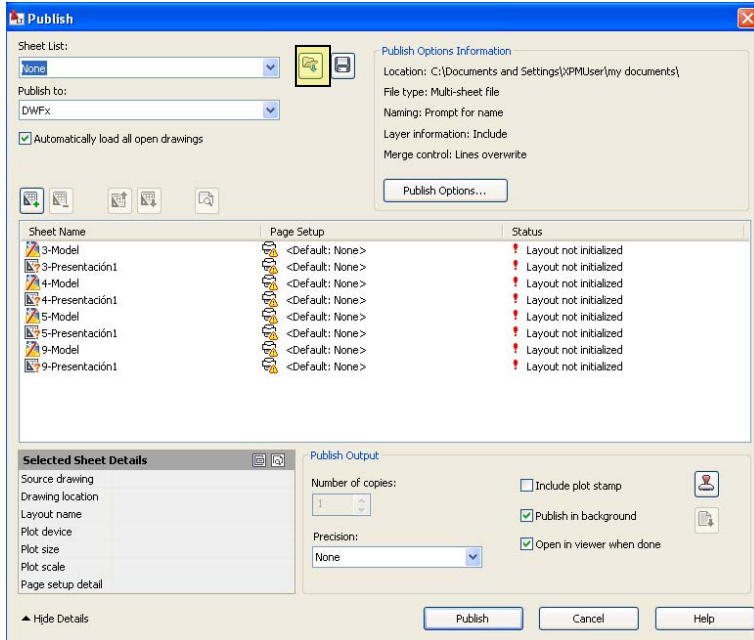
Select *Create DWF Navigatable*

Select

The navigatable hyperlinks will now be created within the project and a publish document automatically created within the project directory

From the *File* dropdown, select *Publish*

The following dialogue will be shown:



Select *Load Sheet List* highlighted above in **yellow**.

Select No if prompted and browse to the current active project's directory. A file of the same name as the project with an extension of *.DSD will be there.

Select 

Select → *Replace All Sheets in the List*

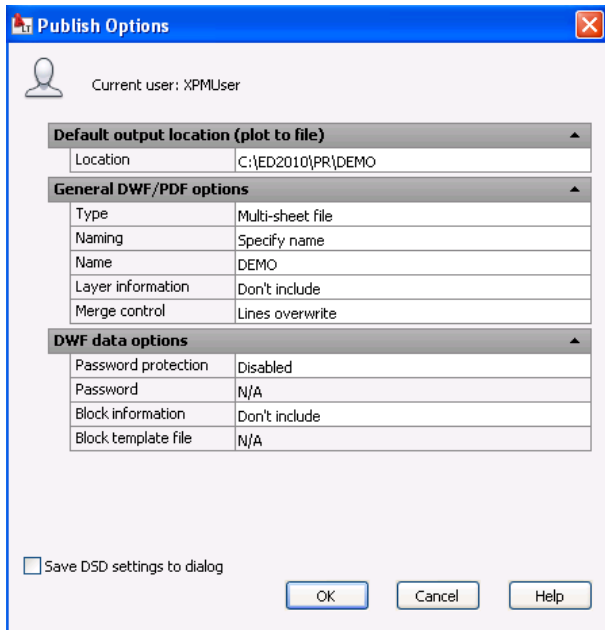
The *Publish to* dropdown allows you to select



- DWF Opens using Autodesk Design Review
- DWFX Opens with Internet Explorer v7 > (hyperlinks not currently supported)
- PDF Does not support hyperlinks in Adobe Reader

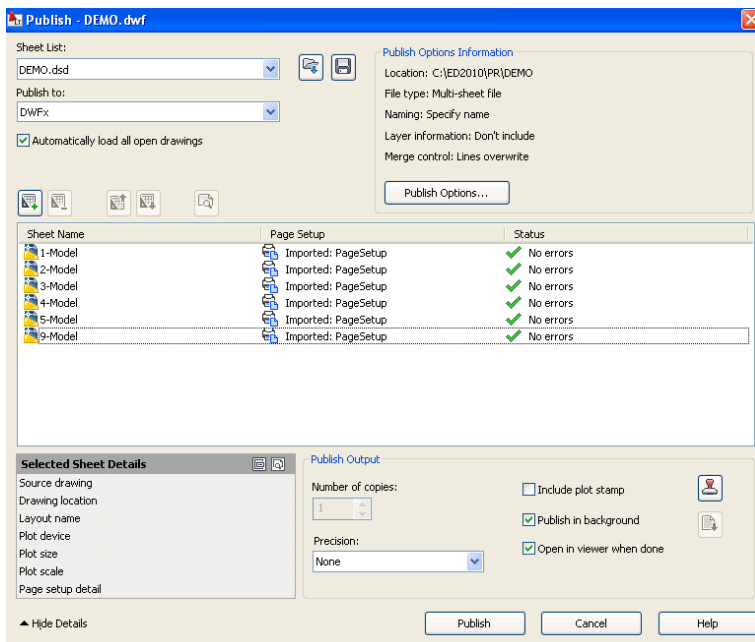
In this example, select *DWF*

Select 



In this dialogue, you are able to create individual DWF(s) for the individual drawings or a multi-sheet DWF. You are also able to include block information allowing the client to search on the component identifications (SNA values).

Select OK to accept any changes.

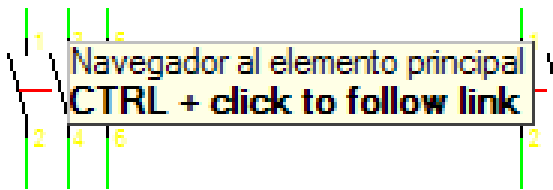


In the above example we have also imported a PageSetup file that defines the print quality of the published document. For a copy of this example PageSetup file, please contact support@midastechnology.co.uk

Select 

When published, the DWF file can be opened using Autodesk Design Review

When you hover over a symbol, you will see the hyperlinks



Select *Ctrl* and click to navigate to the associated symbol

Autodesk Design Review can be downloaded free of charge from:

<http://www.autodesk.com/designreview-download>