

# Top Ten Tips on Creating DXFs

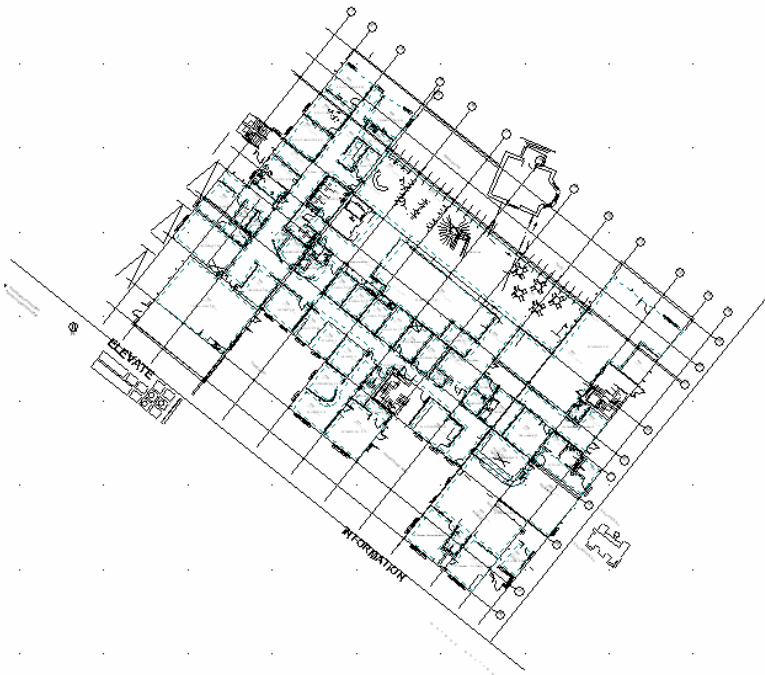
The vast majority of problems with DXF files are to do with their creation by various CAD programs prior to importing into Cymap. A small amount of care and attention prior to, and during, creation can prevent many problems later on and increase speed and productivity.

Cymap Users

## 1. Clean Up Drawing

Delete all unnecessary information, leaving only building walls, partitions, doors & windows.

What would you do with a DXF similar to this one?

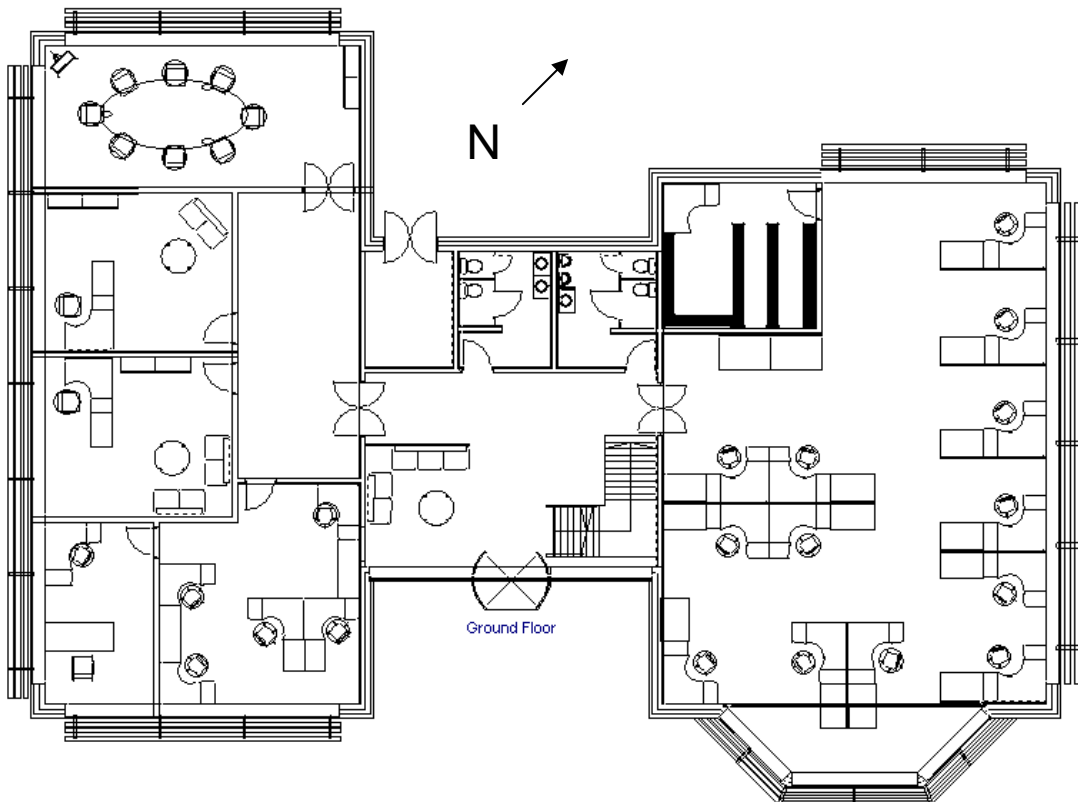


Remove title block, Grid lines and move North Arrow from left of title block to within the confines of the drawing. Rotate to fill the screen more effectively. Cymap's QuickPlan CAD program is a very simple and quick method of creating all the basic info required to model a project. e.g. walls, windows, partitions and doors.

## 2. Useful Indicators?

Sanitary fittings are helpful when placing appliances seating arrangements can be used to assess room populations. Orientation & room names are useful to have displayed.

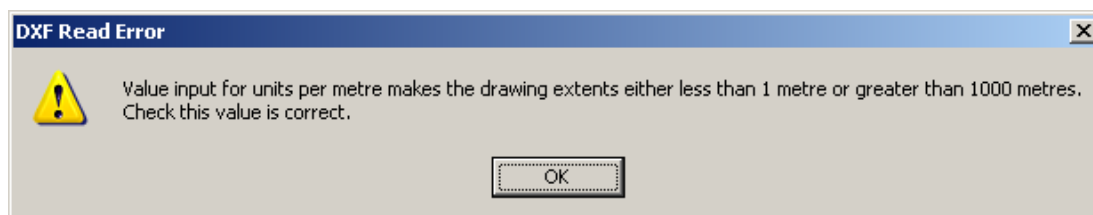
This screen shows how the north arrow, when used in conjunction with Cymap's Infamous Info Box highlights that it is not properly aligned or a different orientation is being compared.



## 3. Check Drawing Scale!

The default CAD unit is millimetres. Check that the CAD drawing has not been drawn in metres, imperial units or a scaled layout!

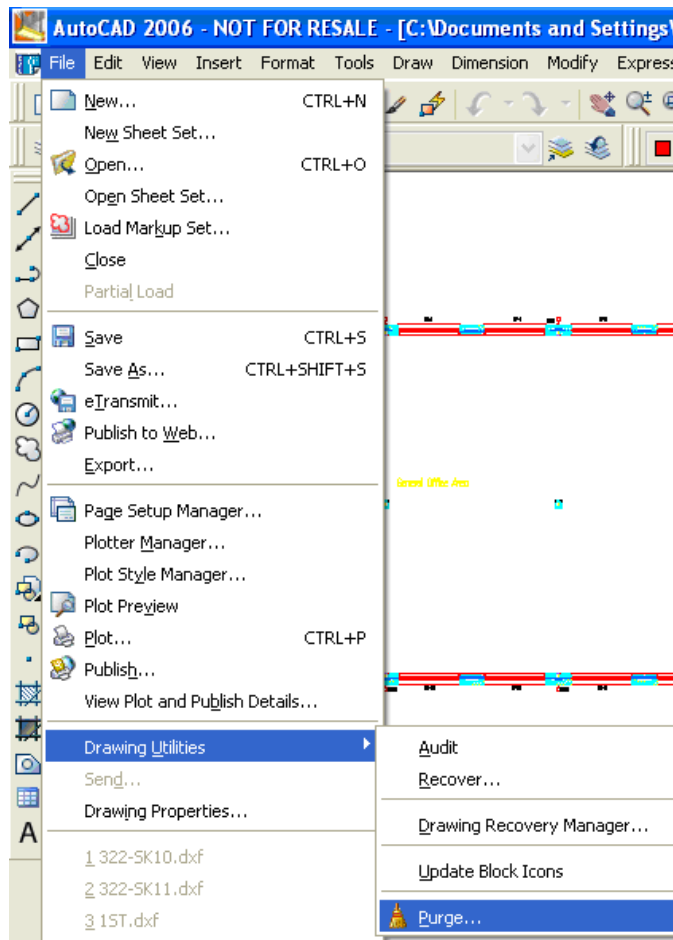
Cymap will warn if the drawing is not in reasonable proportions and suggest that you change the units:



Some CAD programs (TurboCAD) use imperial measurements, and if a DXF is produced from Paperspace rather than modelspace a scaling factor will have been used to fit the layout onto the paper. Check this out with Cymap's measure command.

## 4. AutoCAD Purge Command

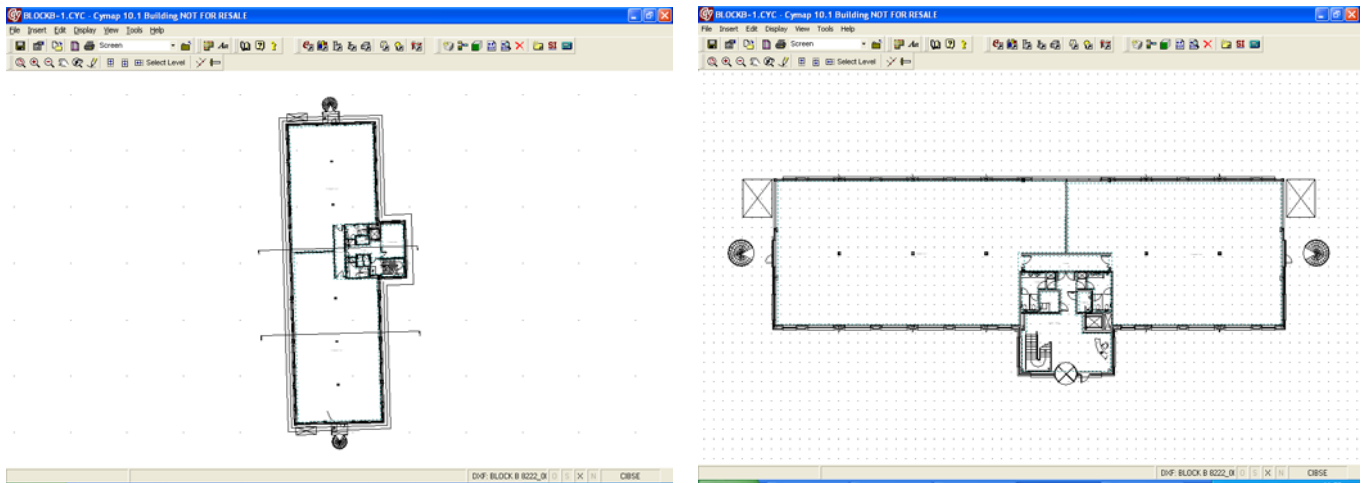
Delete all unused layers, unnecessary objects and use File > Drawing Utilities > Purge All



Purging will remove all unused layers, line types etc and will reduce file size and result in faster manipulation in Cymap and project emailing.

## 5. Rotate Building

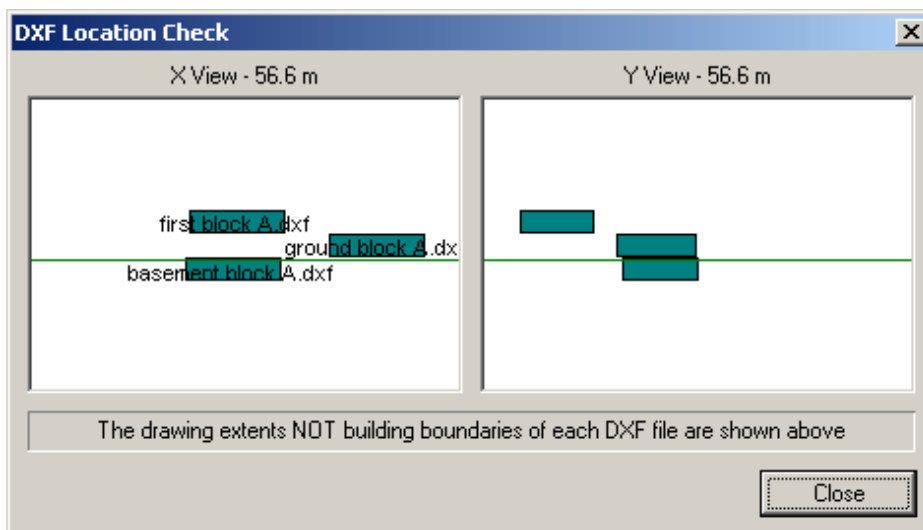
To enable better viewing (>50%), reduce zooms and simplify roof light input, rotate the building horizontally, (landscape format) prior to exporting, to fit monitor display better.



This shows benefits gained in terms of image size and reduction in the number of zooms required when working with Cymap with the building model in landscape format. Roof lights can only be entered at right angles to the screen.

## 6. Ensure Floors Line Up!

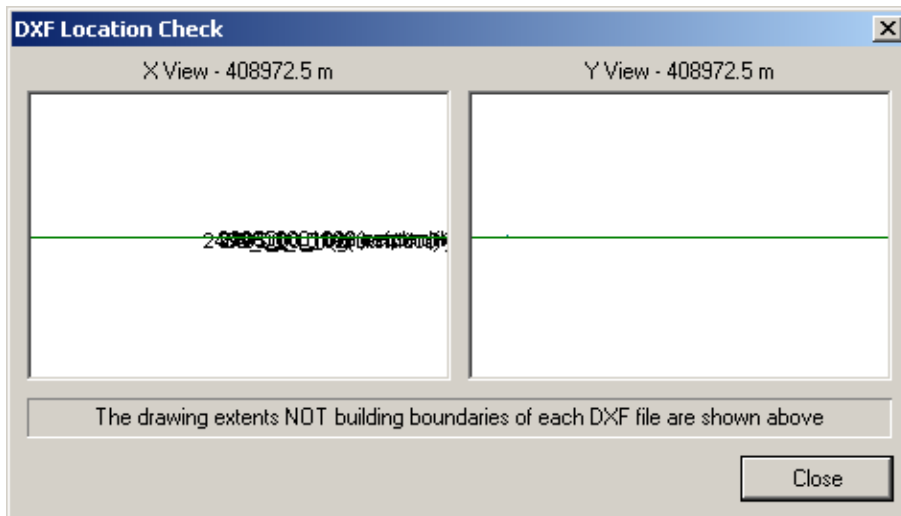
Multi-floor buildings should share the same x,y coordinates. e.g. Centre of lift shaft or bottom left hand corner of building.



This 'bus seating arrangement' was caused by using all plans on one DXF and not setting up the layers as advised in the Cymap Help files. Move all floors to same x,y coordinates in CAD program.

## 7. Remove Excessive Extents

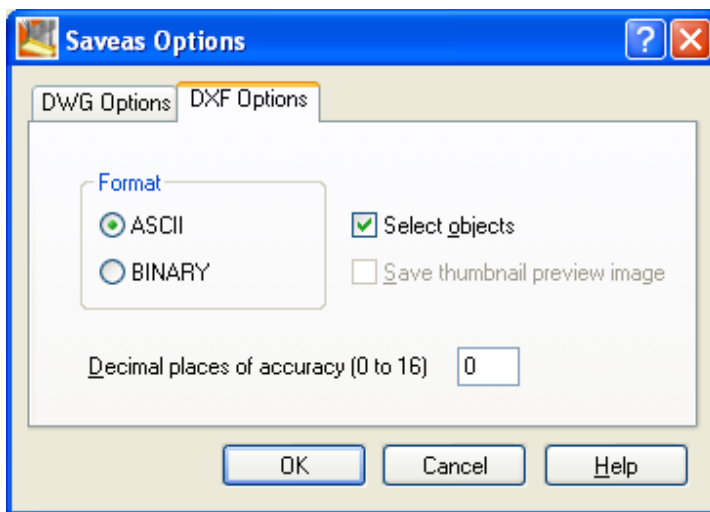
Buildings that have huge unnecessary extents should be moved nearer to 0,0 coordinates or copied to a new drawing.



This shows seven floors, over 3m above each other, but due to the huge drawing extents (½ million metres) they appear all crammed on top of each other each drawing name obliterating the one below.

## 8. Change AutoCAD Defaults

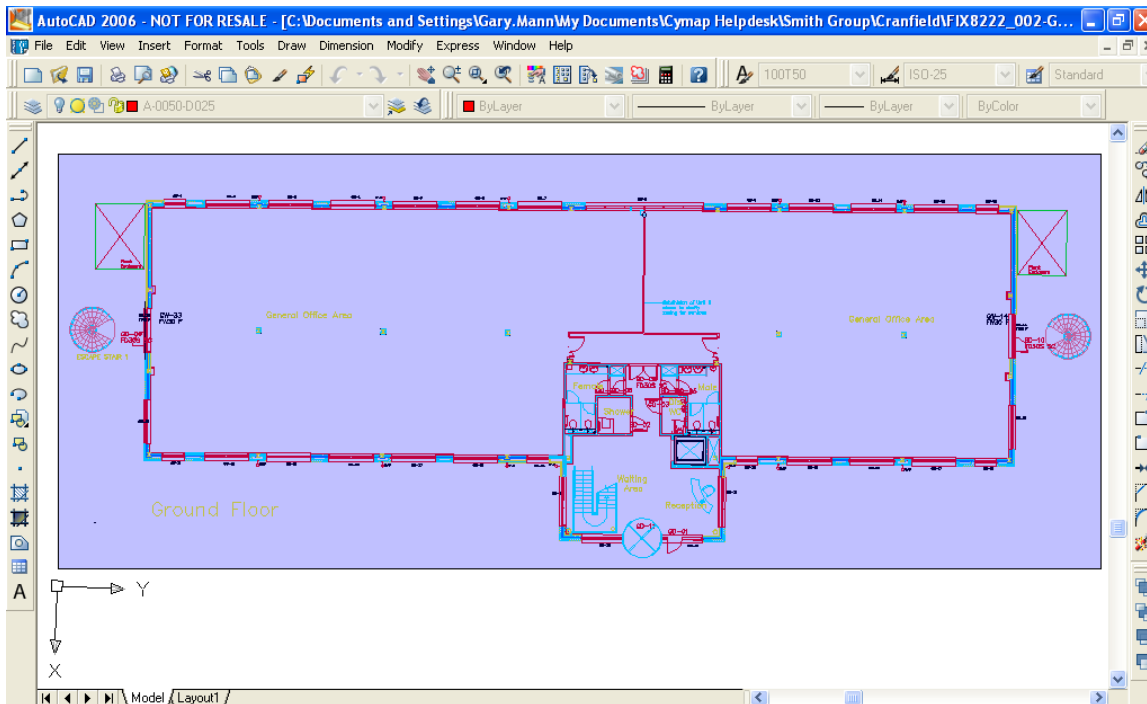
AutoCAD 'Save As' command, defaults to 16 decimal places of accuracy. Use Tools > Options > DXF > to set to zero, i.e. nearest mm.



Some projects are lucky to arrive at the correct building site, let alone the nearest mm. Half a million metre extents in the previous slide saved to 16 decimal places is far too ridiculous for construction site tolerances.

## 9. Select by Windowing

This avoids superfluous information being included in the DXF.

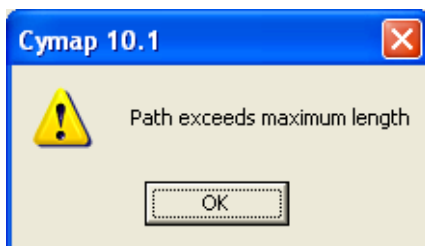


Many drawings have superfluous information littered about the place. In ACAD use Zoom All, and if the building disappears from view then you know it has stray details miles from the building.

## 10. Saving The DXF's

On network drives, don't store the DXF's pathed deeper than 87 characters, including the path length, e.g.

**C:\Documents and Settings\Gary.Mann\My Documents\Cymap Helpdesk\County Borough Council\dx**



## Conclusion

- Following these simple procedures should ensure DXF files are in the condition that ensures hassle free input, efficient management and expedition of your projects.
- If this has not helped you resolve your problem, please contact [customer.services@cadline.co.uk](mailto:customer.services@cadline.co.uk)