

# Using Copy Design from the Inventor SDK

This White Paper will show you how to use the Copy-Design function without having to have Vault installed.

Advanced Inventor users

Please note that this guide is adapted from [http://www.adacad.com/e107/e107\\_plugins/helpcinv/helpcinv.php?0.cat.25.141](http://www.adacad.com/e107/e107_plugins/helpcinv/helpcinv.php?0.cat.25.141)

Please also note that this tool needs to be installed, for Installation instructions, please see **MS2011014**. SDK tools are bonus tools and should be treated as BETA software. These tools are not supported by Autodesk.

- Navigate to **C:\Program Files\Autodesk\Inventor 2010\SDK\Tools\Users\CopyDesign\Bin** and run **CopyDesign.exe**
    - Click Browse and Navigate to a directory containing an .idw you want to copy. (Figure 1)
- Note: This version of Copy Design will only work when an .idw exists in the directory you specify!(versions 2008-2010, in 2011 the tool works with .dwg files)

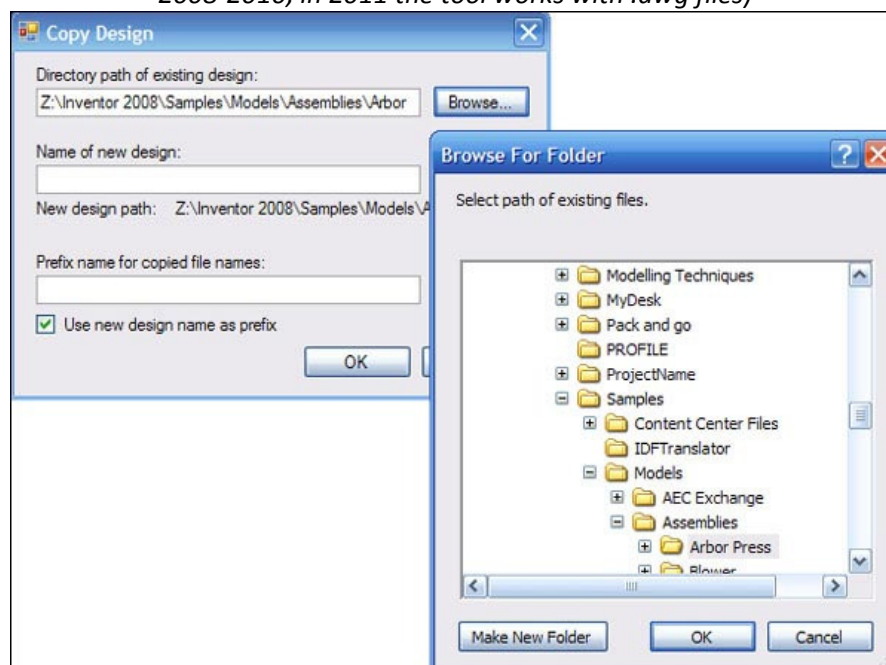


Figure 1: Browse for the directory of the design you want to copy. The design must contain a valid .idw file for the copy process to succeed. !(versions 2008-2010, in 2011 the tool works with .dwg files)

- Specify a new design name (*Figure 2*)  
-If you have "Use new design name as prefix" ticked, the prefix field will automatically populate as you type the new design name

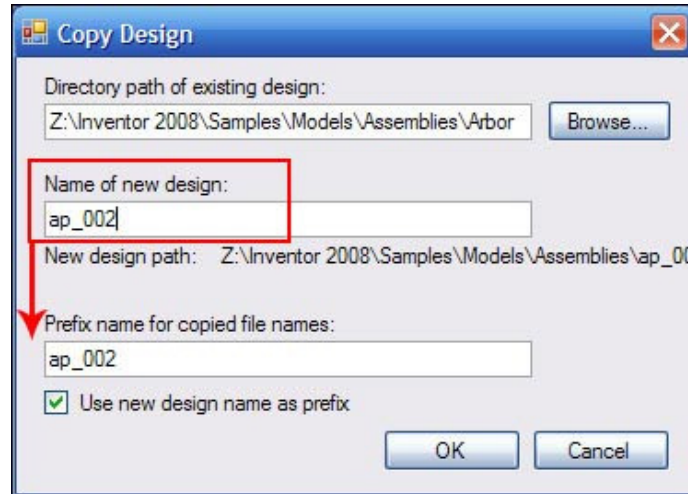


Figure 2: Type in your new design name.

- Optional: Specify an alternate prefix, if desired (*Figure 3*)

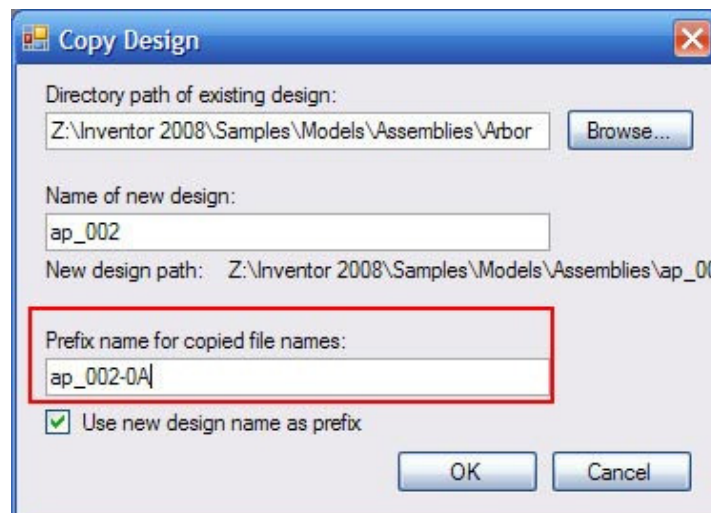


Figure 3: Type in your alternate prefix for filenames, if desired.

- Select OK. You will be advised when the design has finished copying (*Figure 4*)



Figure 4: You'll be notified when the design finishes copying. Select OK.

The drawing and it's related files will be copied to one level up from the directory you specified at the start of the process (Figure 5)

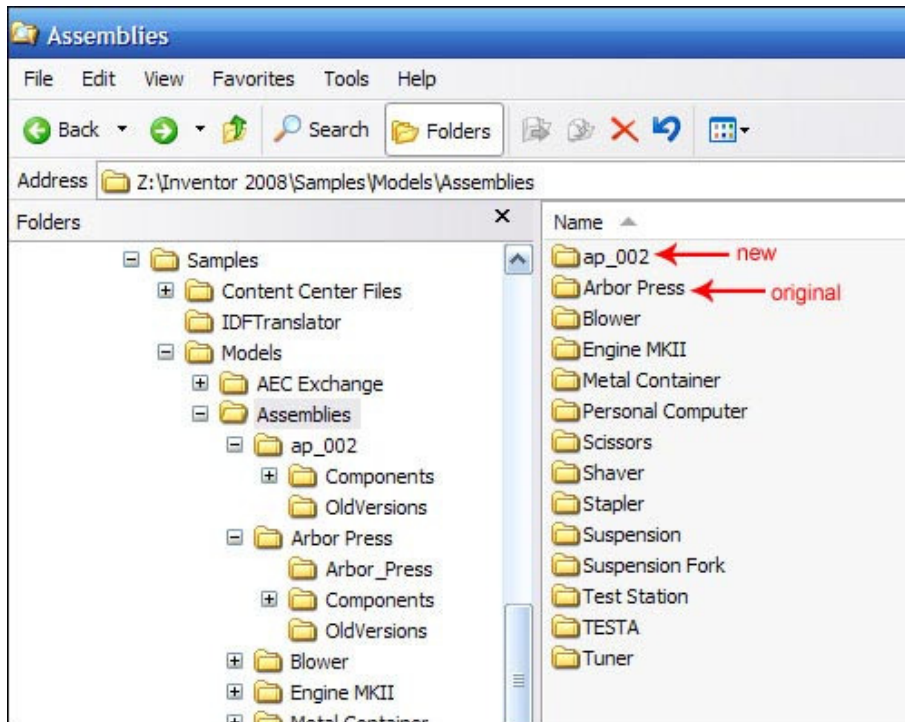


Figure 5: The copied design (ap\_002) in the same directory now as the original Arbor Press design (Arbor Press).

All copied file names will display the prefix you specified (Figure 6).

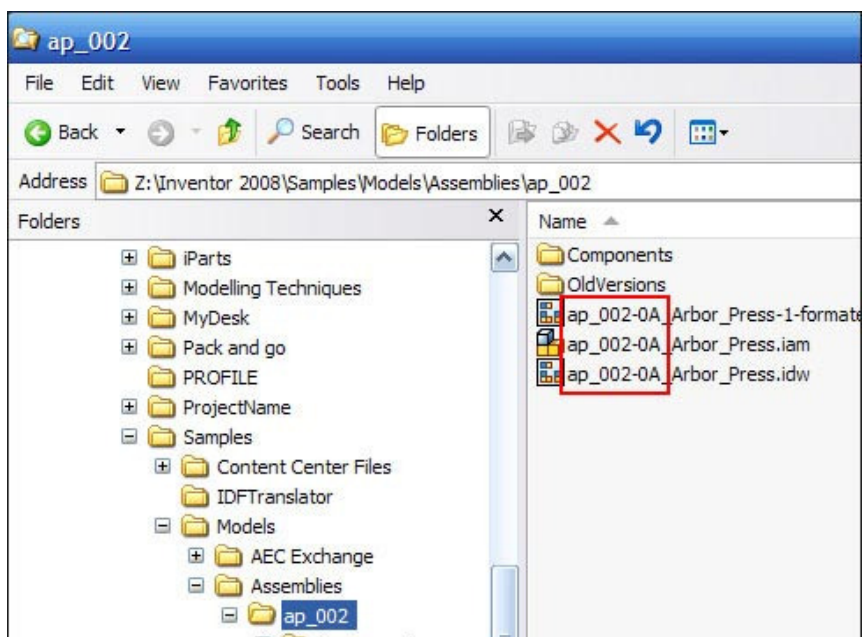


Figure 6: The prefix specified during the Copy Design process is displayed on all new files.