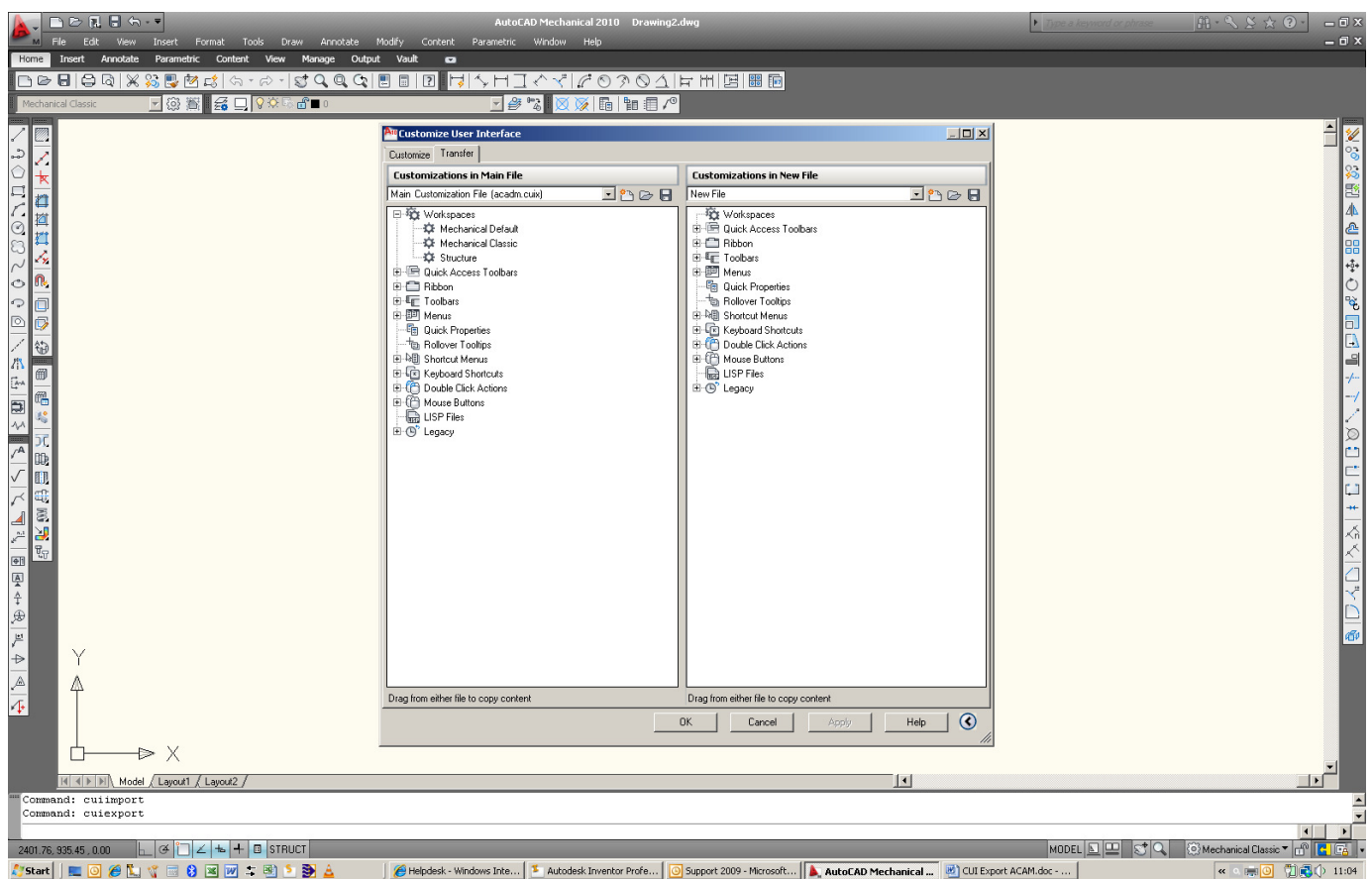


Importing a CUI file in AutoCAD/Mechanical 2006-2011

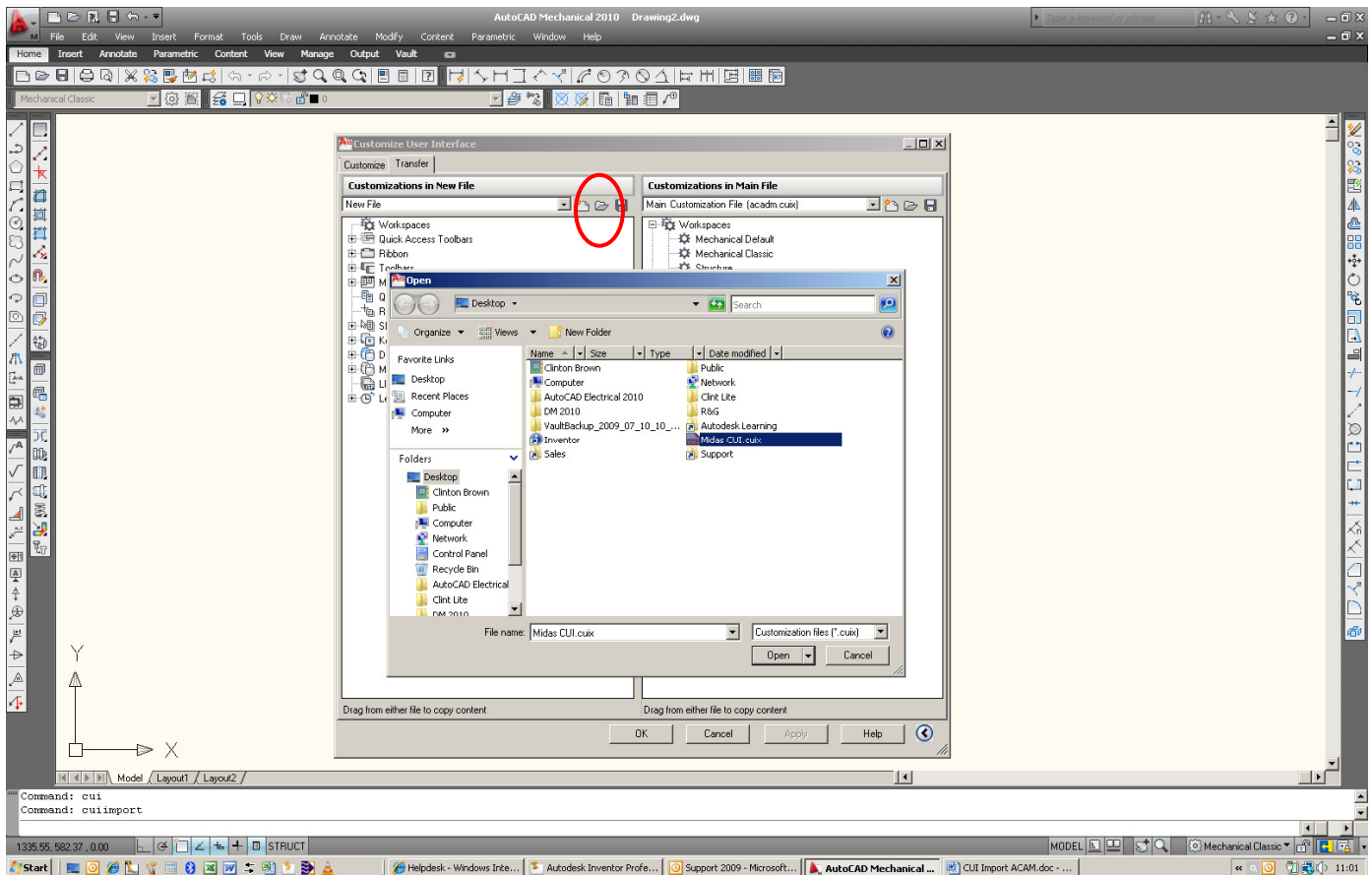
You can migrate CUIs between AutoCAD versions and different user PC's. Copying a CUI file from PC to another can be particularly helpful, when setting a company CAD standard, or if a seat of AutoCAD becomes unstable or loses it's icons and menus. CUI stands for Customize User Interface.

Advanced AutoCAD users, Advanced AutoCAD Mechanical users, IT departments, CAD managers

In order to share a CUI file between 2 PC's you will first need to export the CUI file from the first PC, to do this, please see MS2011015, which details this process. To import a CUI file into AutoCAD/AutoCAD Mechanical, please follow this guide.



Type **cuiimport** into your command line



Click on **Open**, then locate the CUI file to import and click on **Open**, then click **OK**

This will import the CUI file, which was previously exported or backed up. The new CUI file will now be active.