

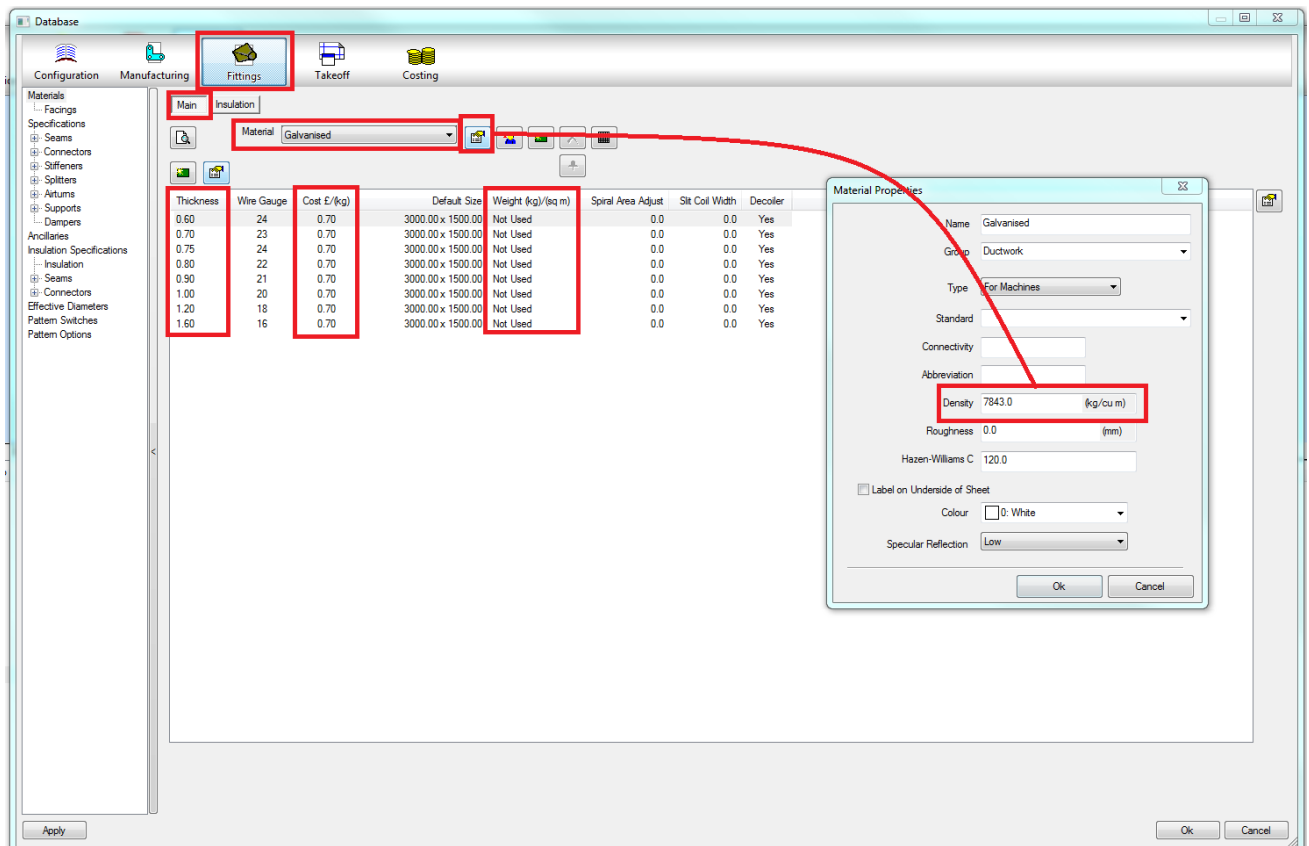
# Material Costing Basis for ESTmep

The default setup within ESTmep calculates materials on a price per volume basis. By looking in the FITTINGS section of the database, under the MAIN button you will be able to select a MATERIAL to set the price of.

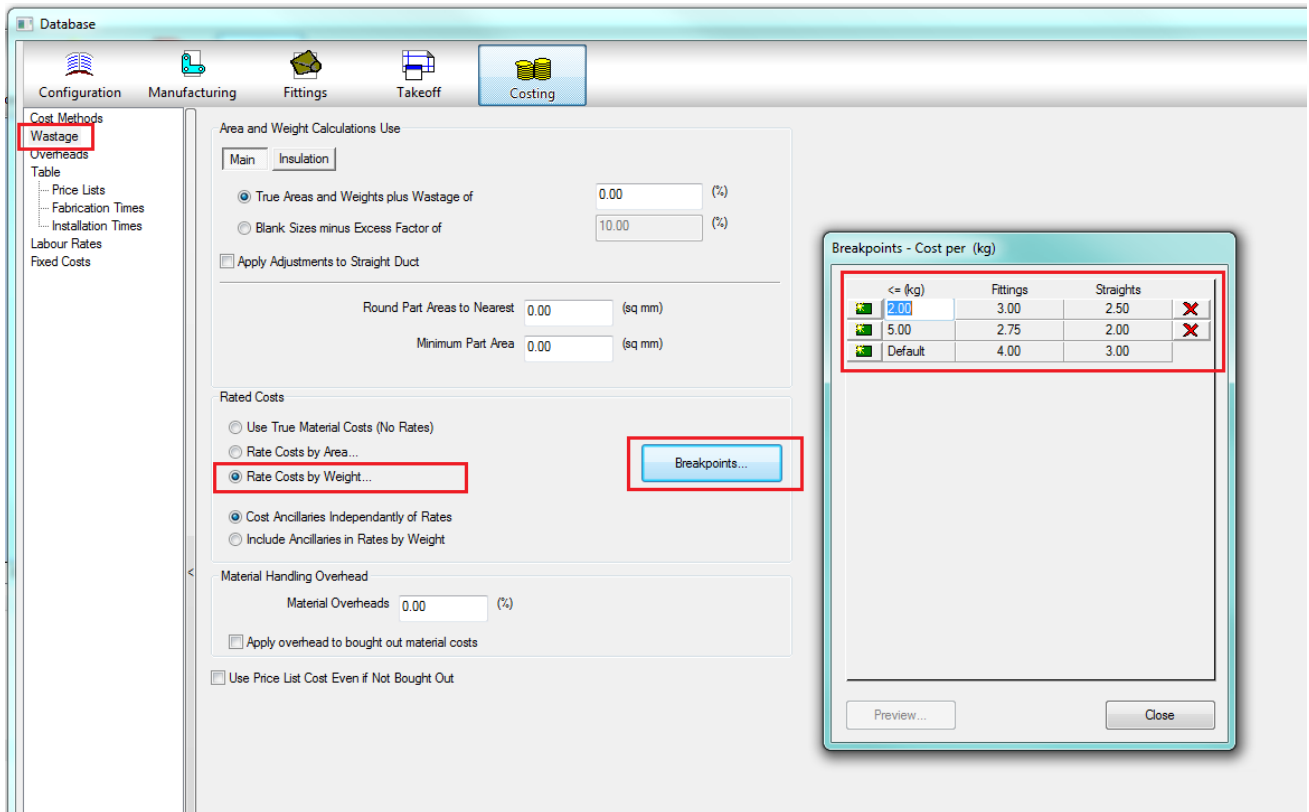
The COST column gives a price per weight (£/kg) whilst the WEIGHT column is set to 'Not Used'. The immediate question arises 'Then How does ESTmep work out the cost of an item if it doesn't know the weight of the material?'

By selecting the PROPERTIES button for the material you can set the DENSITY (kg/ cu m). This gives the weight calculation along with the THICKNESS column in the material itself.

By setting the DENSITY to 0, you will then be able to set the WEIGHT of the material to give the price based on a square area instead.



Costs can also be calculated rated on the Area or Weight, in which case you will also want to set the breakpoints for the costs.



In the above screenshot you can see I have set the **RATED COSTS BY WEIGHT** option and opened the BEAKPOINTS panel ready to set them up.

The following COST BREAKDOWN panel now shows the rated costs.

