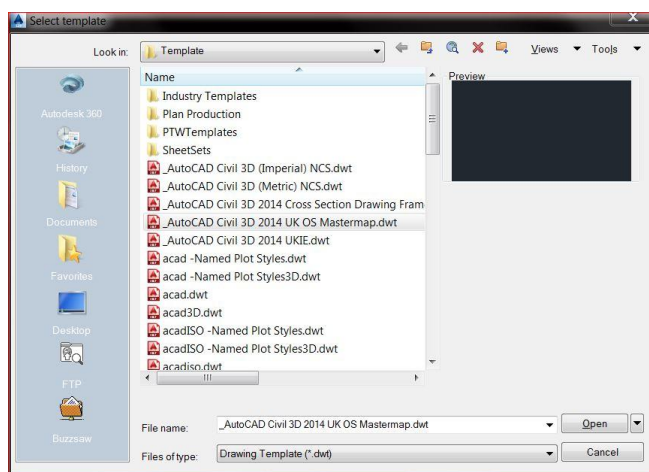


AutoCAD Civil 3D 2014

Best Practice 1 – Using the Correct Template

It is imperative that before any project design is undertaken, project leaders should ensure that they have a correct and up to date Civil 3D Drawing Template (.dwt) installed and set as the project default now this may seem a rather mundane and basic issue but it is surprising how many issues are created purely down to members of the design team using the wrong template.

When you select new drawing from the application drop down you are present with a whole plethora of different templates, and this is where mistakes can be made.

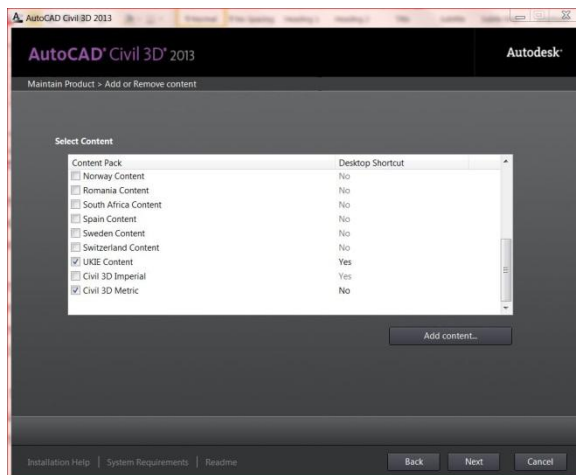


In the United Kingdom Autodesk have done a fair bit of work in preparing a .dwt that is suitable to be used as a starting point and **I must stress as a starting point**, as you will still need to customise it to your company standards and any project and requirements.

You can see from the list there is the AutoCAD Civil 3D 2014 UKIE.dwt this is the one to select as a start, if this is not available then there has been a mistake in the configuration on install and the country kit has not been applied, and you will need to reconfigure the install, this is simply done, (if you have the correct administration rights) by;

- Go to Control Panel, Program and Features,
- Double click on Autodesk AutoCAD Civil 3d 2014 English UK
- This will launch a wizard and select Add and Remove Features

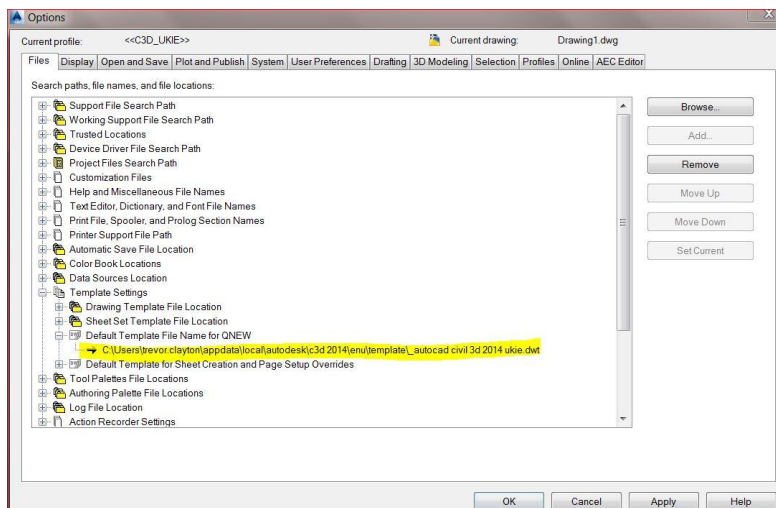
You will be presented with;



Simply select the correct content and follow through the wizard.

The use of the correct template can also be automated in as much that when new select a particular template is opened this is easily done by.

- Right click in the Command Line and select Options
- Select the first Tab "Files"
- Navigate down to Template Settings and expand then select the Default Template for QNew



If the wrong template is in place then simply select it and use the browse button to navigate to your correct template.

