

Item Creation for Fabrication Products.

A flat sheet with Cut out holes

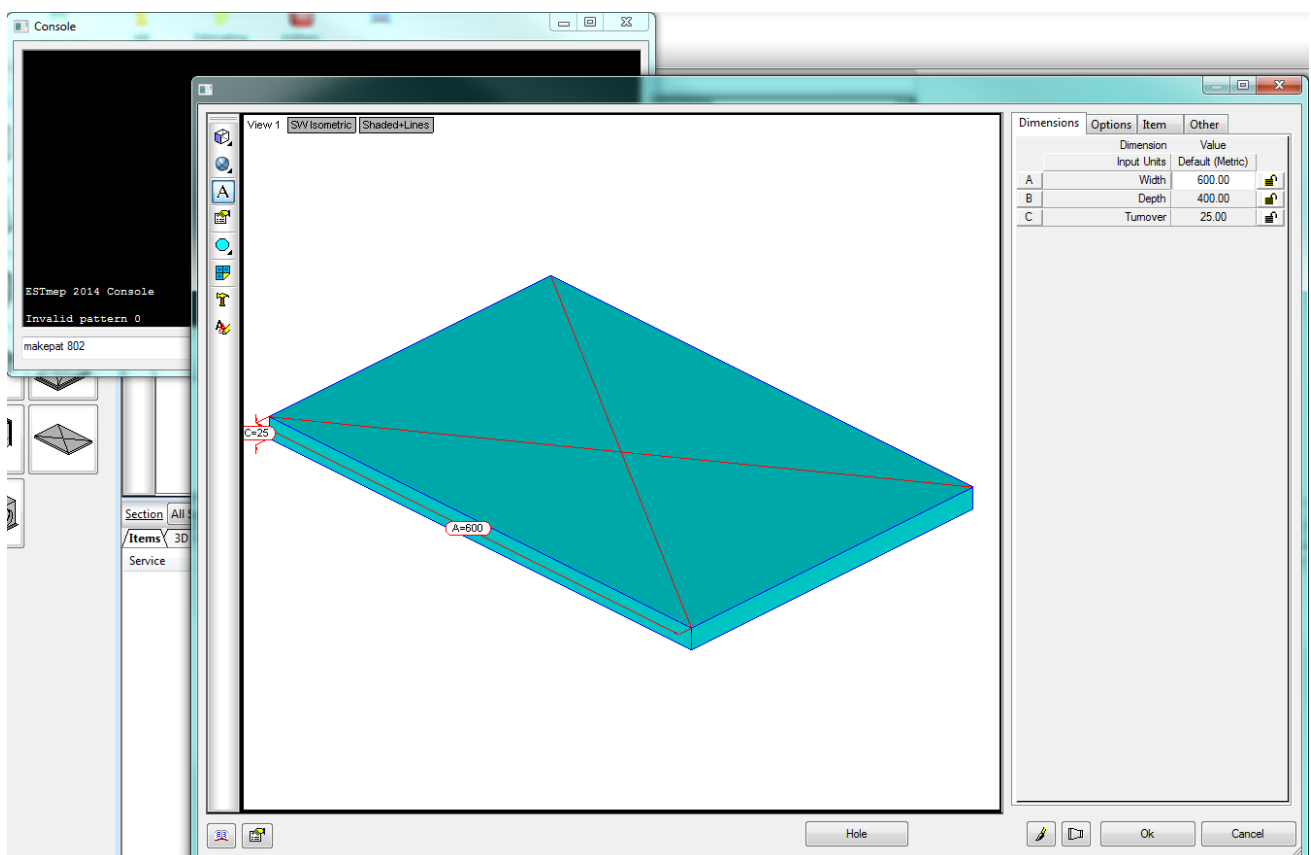
Autodesk Fabrication CADmep & ESTmep

In this example of content creation for the Fabrication software products, I will show the setup of a Flat plate with cut out holes using the ESTmep software interface. Using the CADmep interface will involve the exact same steps but with a slightly different GUI in some places.

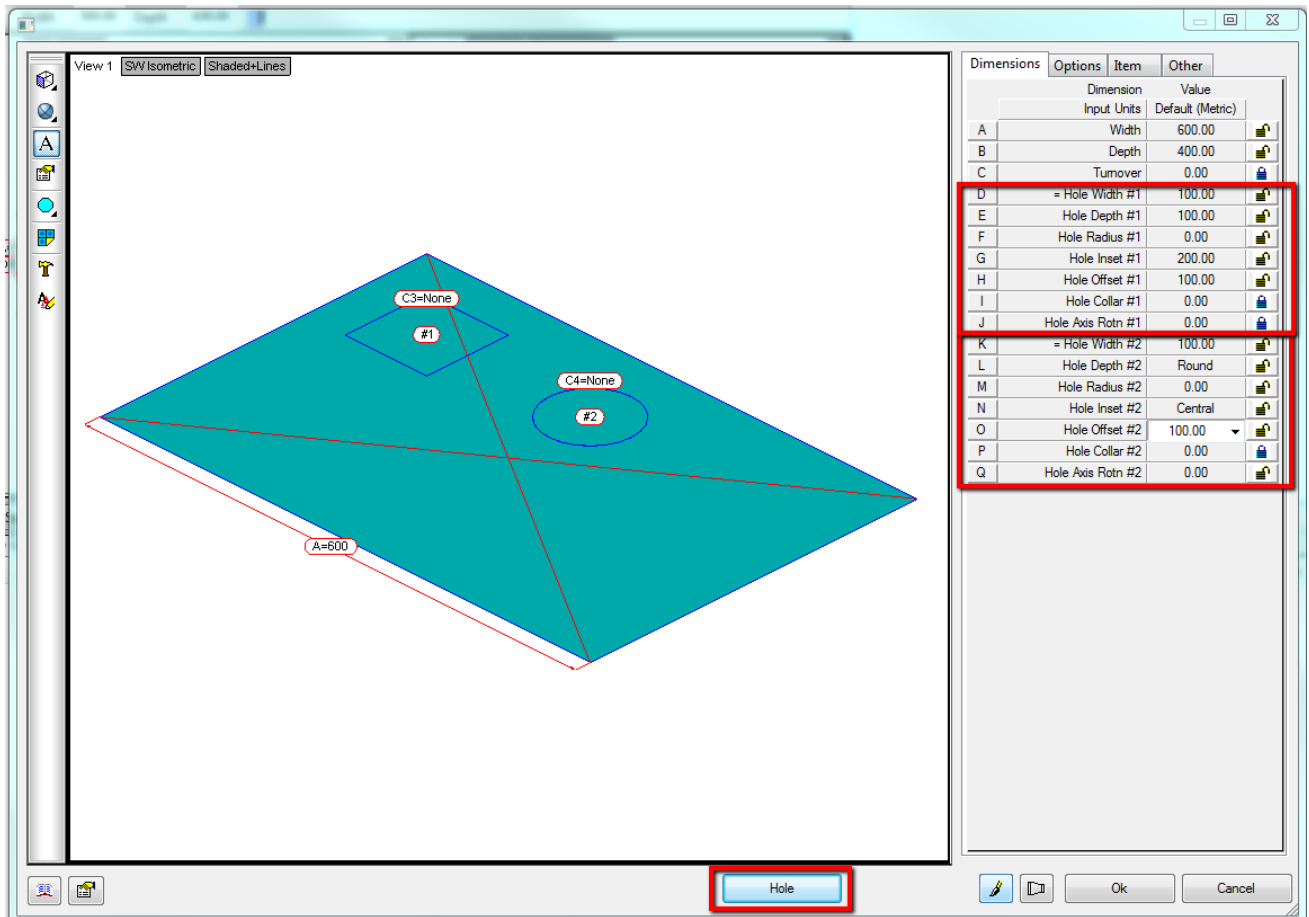
I'm going to use the 'Cap End' pattern which has a CID of '802' and I'll use the **MAKEPAT** command with this CID in order to create it.

In ESTmep open the console with **CTRL+SHIFT+C**, and enter the command 'MAKEPAT 802'; In CADmep type 'MAKEPAT' into the command prompt and then enter the CID number.

Once your item appears edit the Dimensions, Options etc for your default database settings.

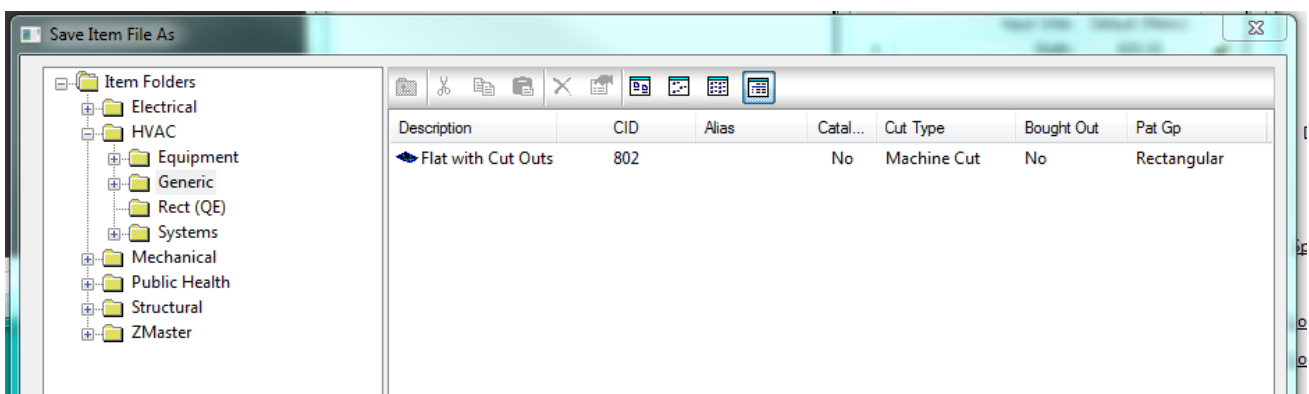


I have set the **Turnover** to 0 and locked the dimension so it is not editable when we insert later. Then I've added 2 holes using the **Hole** option and again set the defaults I would like to have...

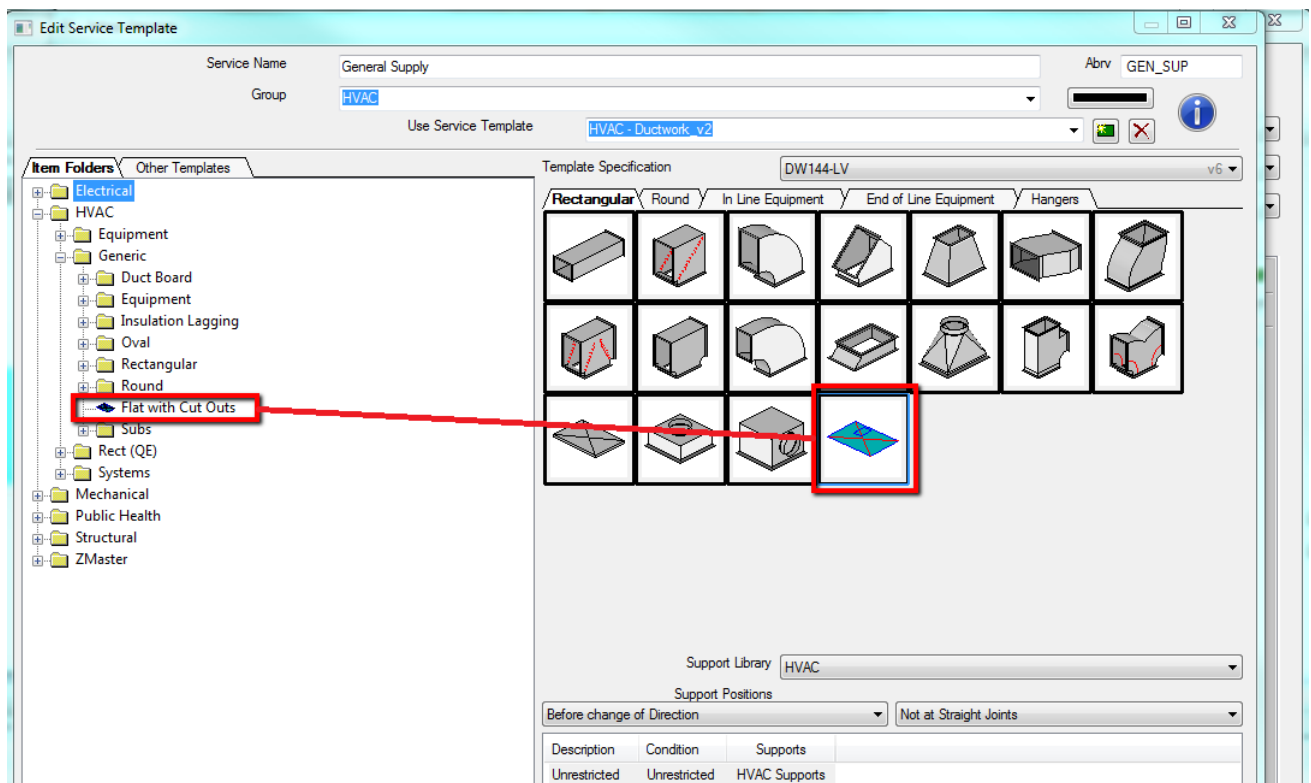


Use the **Redraw** button towards the left of the OK button to update the graphics.

By pressing OK you will be prompted for the filename to save the .ITM file being created. I'm saving in the **HVAC > Generic** folder...



Now we can go to the Service and add this item to our Service Template. Here I am adding it to the **Rectangular** tab of my **General Supply**. Drag the icon across from the Item Folders across to the Template...



OK That's it ! We should be good to try it out.

Of course, if you need some more help creating content for **Autodesk Fabrication Products** don't hesitate to give Cadline a call