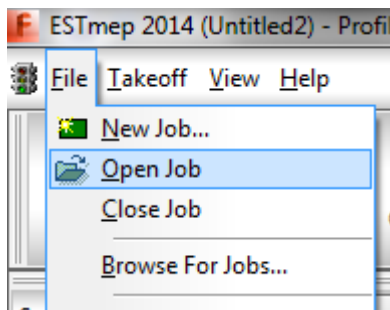


# Working with Job files in CADmep and ESTmep

## Autodesk Fabrication Suite products: CADmep and ESTmep

Autodesk Fabrication CADmep and ESTmep can utilise the same Job file formats internally - these are .MAJ and .ESJ

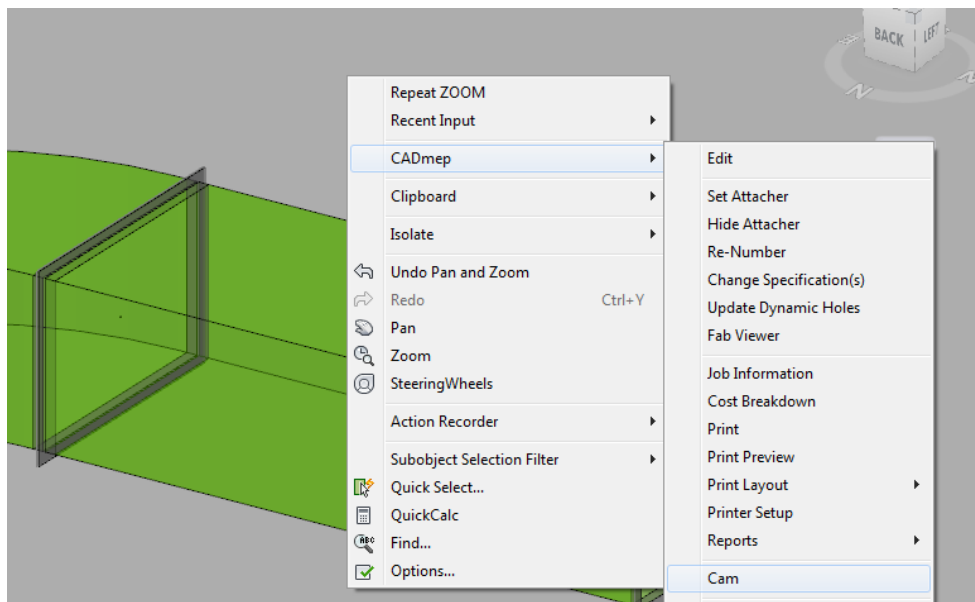
In **ESTmep** it is the standard file type available from the File menu.



The .MAJ file is used to save the contents of the job items only. This would be the smaller of the 2 files and utilises the database on the machine opening the file. In a single organisation with a common database config this is normal and fine.

The .ESJ file saves the job items and also encapsulates the database used. This makes it a larger file but means that the file is much more transportable. It becomes possible to send the ESJ file to people who are not using the same database but they will be able to edit the file correctly for the original database.

However, the picture is slightly different in **CADmep**. Normally, certainly since 2014, the working file is the .DWG file which cannot be opened directly by ESTmep.



Use the **CREATECAM** command, which is accessible via

**Right Click Mouse > CADmep > Cam**

You will be prompted to select the items required in the file before the file dialogue box appears.

This file can now be opened directly in ESTmep, as shown above, and any edits saved. In order to work again on this job in CADmep use the **OPENJOB** command, usually in a new .DWG file to import the job.