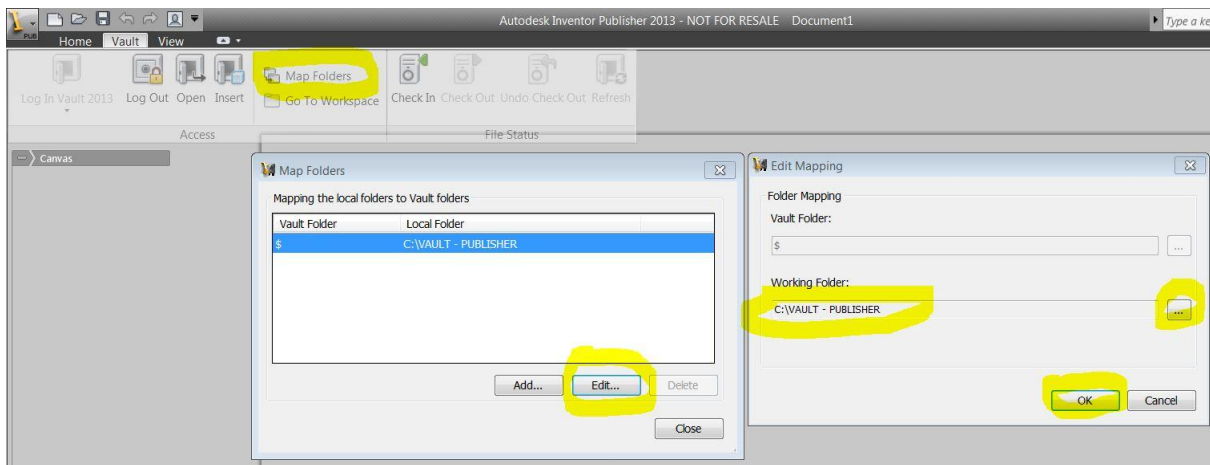


Working with Publisher and Vault

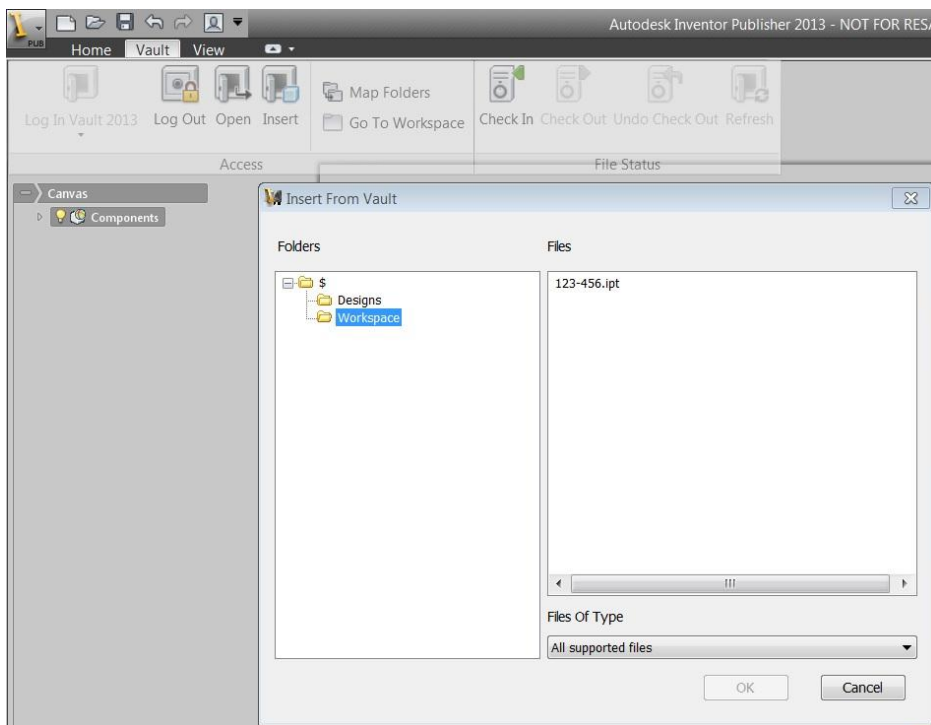
Does Publisher 2013 work with Vault? Well yes it does. Here are a few tips for how to make this run as smoothly as possible. If you are getting errors when opening Publisher files or updating them when the Inventor model in Vault has changed please follow this guide.

All Inventor Publisher users with Vault

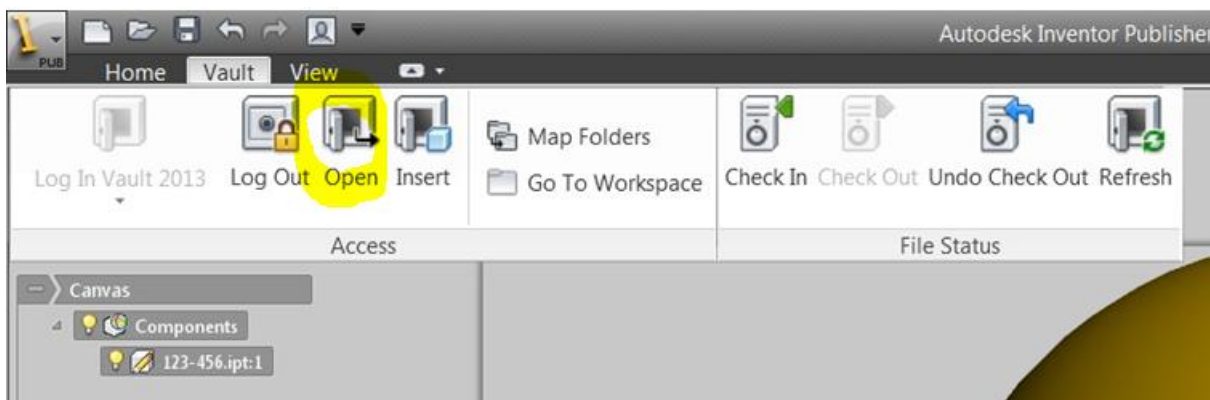
- 1) Always Log In to Vault (Vault tab on the ribbon) when starting a new Publisher session.
- 2) Map your Publisher folders. The recommended workflow for Publisher is to use the 'Map Folders' option on the Vault tab.
 - a. Create a new folder (in this case I've created one called 'VAULT – PUBLISHER' on your C drive. Make sure it isn't buried deep in a folder structure or you may have issues with filename lengths.
 - b. Use the 'Map Folders' tool to point to this folder as shown in the screenshot below.
 - c. Once you've done this any CAD files you insert into a Publisher IPB file will be automatically copied and placed in this folder.



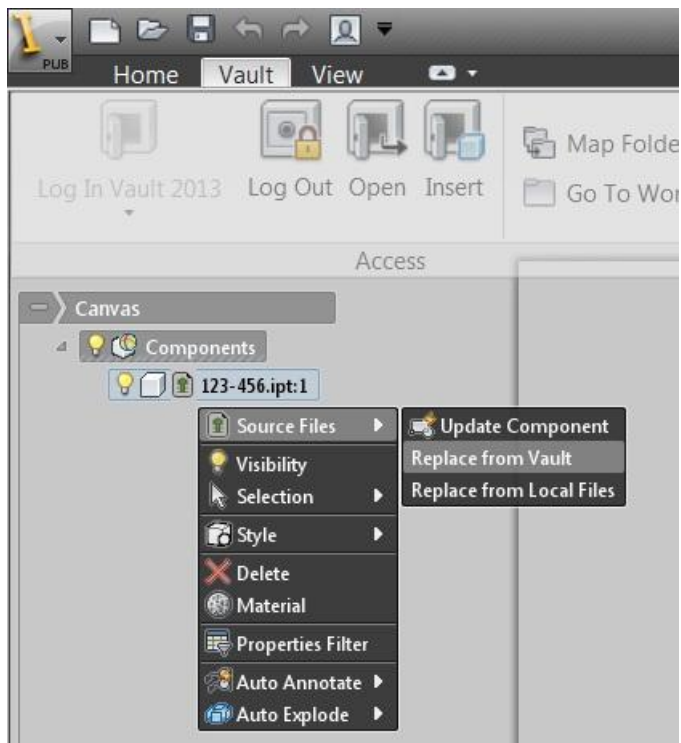
- 3) Always use the 'Insert' icon on the Vault tab. This will make sure you get the latest version of the CAD file from Vault.




- 4) When saving your IPB file, make sure you check it in to Vault.



- 5) Always open an IPB file using the command in the Vault tab.
- 6) If the Inventor file has changed (or may have changed), the best way to update your IPB file is to right click on the .ipt or .iam file and click 'Replace from Vault'. This will then download the file from the Vault to your mapped folder (in this case 'VAULT – PUBLISHER').



7) Then click the update symbol here:  123-456.ipt:1

Happy Vaulted Publishing!