

# Adding a New Cable into Electrical Designer

In this month's Tips and Tricks we look how to create a new cable into the cables database within Electrical Designer.

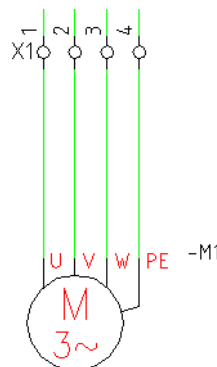
Electrical Designer Users

Cables are defined generically with a Catalogue and References assigned either in the cables database or assigned at a later point. This is because a type of cable may be made by several manufactures and/or suppliers.

The Catalogue and Record information is defined in the normal method through the *Catalogue* and *Reference* tabs.

Generic cables and their cores can either be assigned through the *Terminal Editor* or on the fly in the drawing. In this month's Tips and Tricks we will guide you through assigning a cable on the fly.

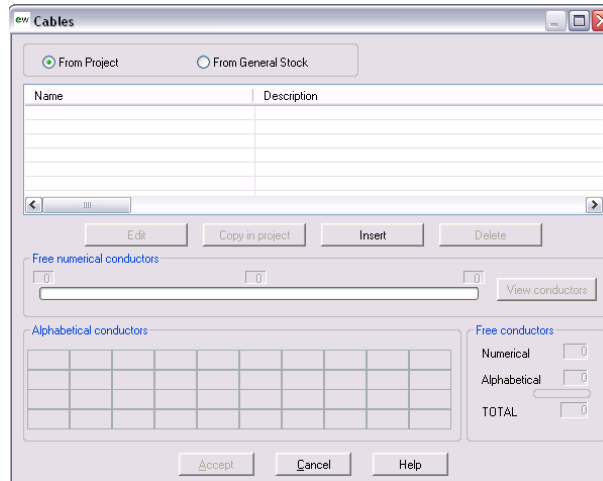
Draw the following:



Select the command  *Set Cables*

Highlight all four cores connecting between the terminals and the motor.

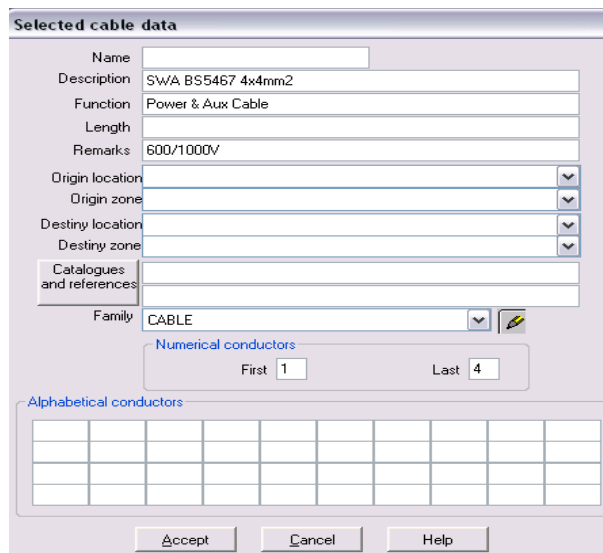
The following dialogue will appear:



Select  *From General Stock*

Select

Define the values of the cable as follows:



- You can assign the Catalogue and Record at this stage so that the cable has a pre-defined part number
- The cores can be a mixture of numerical and alphabetically cores although the numerical cores are listed first

Select  to finish adding the new cable into the cables database!

If you wish to add the cable into the project and assign to the wires, highlight the cable from the *From General Stock* list and select  *Copy in project*

Assign a cable name e.g. W1

Select

Select  *From project*

Highlight the cable from the list e.g. W1

Select

Highlight the core you wish to start the core assignment from and then select

The generic cable and its cores will now be assigned