


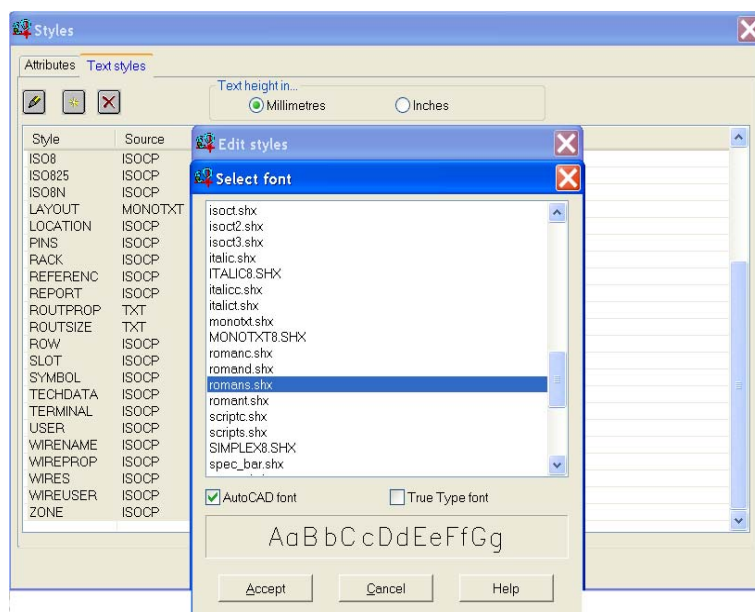
# Globally Changing the Font Style of a Project

All Electrical Designer Users


Electrical Designer, as installed, uses the font ISOCP for all of its information displayed within the drawings. This can be changed retrospectively after a project or indeed projects have been created. This is extremely useful if your company standard text font is as an example ROMANS or if a customer requires their company standard text font when drawings are supplied.

Text Styles are defined in the Main Manager.

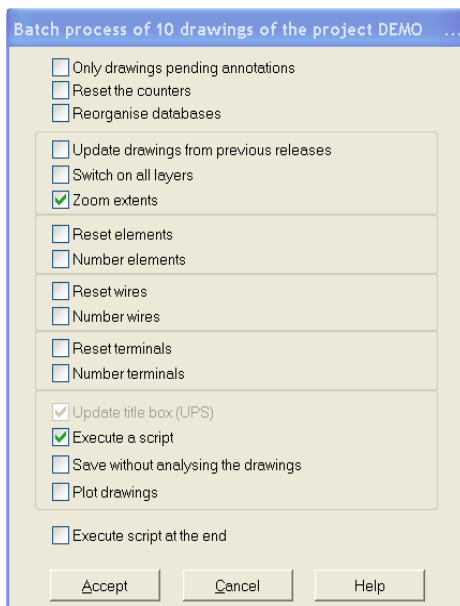
You can change these by selecting the *Configuration*  icon and then the option *Text Styles*. Select the tab **Text styles**. Using *Ctrl* and *Shift* keyboard buttons, you can select all Styles or selected Styles. Double left clicking on one of the styles will enable you to change the *Source* font to a different style.




Select *Accept* until back in the Main Manager.

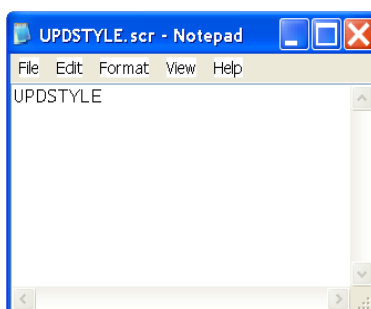
Select the Projects tab and highlight the project you wish to modify. Select the Drawings tab and then the command *Process Drawings* 

Select the options as shown:



Select *Insert*  and enter the name of the new file as UPDSTYLE. Select *Accept*.

In the dialogue type UPDSTYLE and press the **↵** Enter key on your keyboard once.



Select *File > Exit* and *Save Changes*.

Select *Accept* until the script starts running.