

Exporting Markers to a Label Printing Machine

All Electrical Designer Users

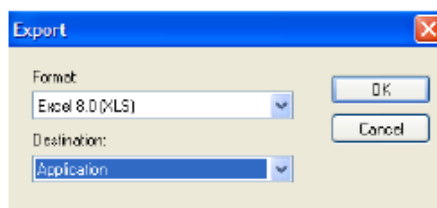
Labelling of your equipment is time consuming (up to 40% of manufacturing time), error prone (consistency issues with the schematics) and expensive (last minute label requirements and cost of setup of printing). There are many manufacturers of label printing machines such as Critchley, Markin Genius, Chembre, Murrelektronic, Raychem, Wago & Weidmuller to name a few. Many companies prior to Electrical Designer would often manually produce a report or drawing to provide to a label manufacturer. Even after deployment of Electrical Designer, the benefit of exporting your label requirements to a labelling machine can be overlooked because it is a different departments reesponsibility.

However this is not of the benefit to the company.

In this months tips and tricks we look at how this can be achieved.

Component markers

- Select Report Centre
- Select List Parts
- Select Language – English
- Select COPO
- Select Accept
- Select Accept
- Select Export

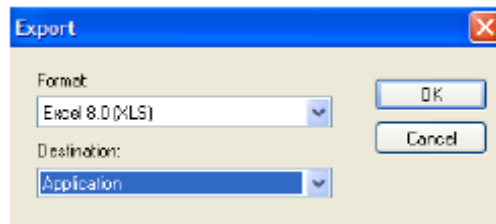


Select Excel 8.0 (XLS)
Select Application

Most modern labelling software will accept an Excel (XLS) import. You will need to consult your labelling company or labelling machine for details.

Terminal Markers

Select Edit Connections and Cables
Select the terminal strip you wish to have the markers for
Select *Select*
Select Reports
Select OK
Select Report of Connections. Only One Connection.
Select Language - Misc
Select MTERM or MTERM2 or MTERM3
Select Accept
Select Export

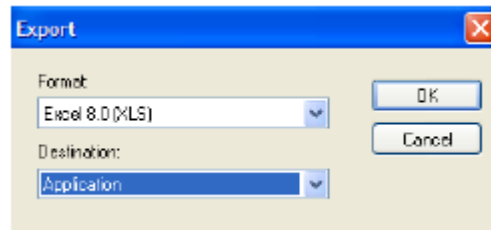


Select Excel 8.0 (XLS)
Select Application

Most modern labelling software will accept an Excel (XLS) import. You will need to consult your labelling company or labelling machine for details.

Wire / Pipe Markers

Select Report Centre
Select List Connections
Select Language – English
Select CNX3
Select Accept
Select Accept
Select Export



Select Excel 8.0 (XLS)

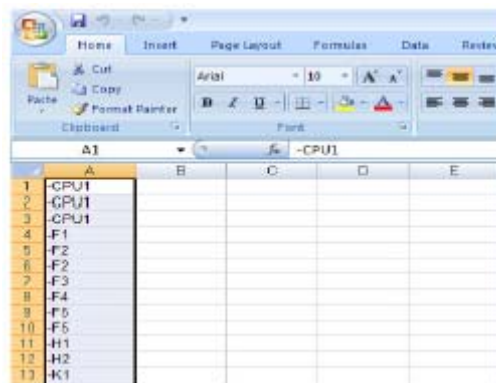
Select Application

Most modern labelling software will accept an Excel (XLS) import. You will need to consult your labelling company or labelling machine for details.

N.B. Electrical Designer does have a direct export to the Weidmuller software through the project manager . This function works directly with M-Comm, M-Print and M-Label software and also recognises the new M-Print Pro Software.

In this example, we will import into the Weidmuller PrintJet Pro system but with the procedure that can generally be applied to most of the other labelling machines on the market.

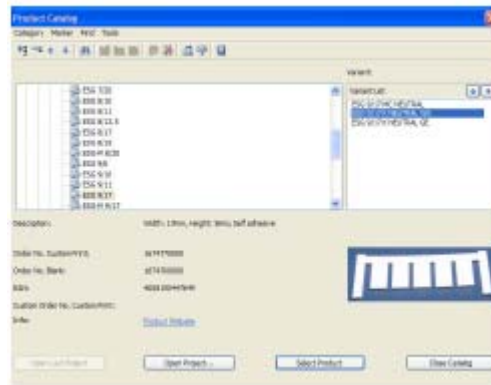
Open the Excel spreadsheet containing your markers and highlight the labels.



Select Edit > Copy

Start-up your labelling software

Choose the correct label type you want



Select Edit > Paste and your markers will now be ready to print!

